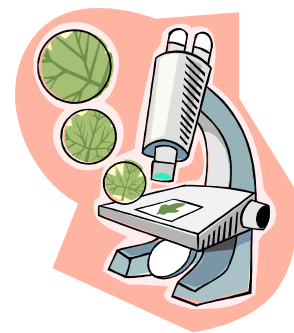


# Biology Syllabus 2023-24



Ms. Rivera ([riverac@fultonschools.org](mailto:riverac@fultonschools.org))  
 Ms. Rogman ([rogmans@fultonschools.org](mailto:rogmans@fultonschools.org))  
 Ms. Rallapalli ([rallapallip@fultonschools.org](mailto:rallapallip@fultonschools.org))  
 Mr. Delgado ([delgadam1@fultonschools.org](mailto:delgadam1@fultonschools.org))  
 Ms. Sandoval ([sandovalm1@fultonschools.org](mailto:sandovalm1@fultonschools.org))  
 Ms. Strothmann ([strothmannjt@fultonschools.org](mailto:strothmannjt@fultonschools.org))  
 Ms. Li ([LiX1@fultonschools.org](mailto:LiX1@fultonschools.org))

## Course Description:

This year long course includes the study of the methods of science, ecology, cell structures, functions and processes, basic organic chemistry, cell energy, heredity, evolution and the diversity of organisms. Emphasis is placed on scientific inquiry and critical thinking. A variety of instructional methods will be used including computer-based instruction, learning centers, projects, discussions, and laboratory investigations. There will be an **End of Course Test**: Worth 20% of the grade and will cover material from both semesters.

## Materials Needed: 3 prong folder, loose leaf paper, colored pencils, pencil/pen.

This year we will be following the Georgia Standards of Excellence. (<https://www.georgiastandards.org/Georgia-Standards/Pages/Science-Biology.aspx>)

## Units of Study:

Unit 0	2 weeks (Test: August 18 <sup>th</sup> )
Unit 1- Ecology Part I	2 weeks
Unit 2- Ecology Part II/ Pollution	4 weeks
Unit 3- Biochemistry	2 weeks
Unit 4- Cells	1 week
Unit 5 Metabolism	2 weeks
Unit 6- Cell Division	1 week
<i>End of 1<sup>st</sup> semester</i>	
Unit 7- Genetics	4 weeks
Unit 8 – DNA Processes	2-3 weeks
Unit 9- Biotechnology	1 week
Unit 10- Evolution	4 weeks
Unit 11- Taxonomy	2 weeks
Unit 12- Organisms/ EOC review	2 weeks
Unit 13- Animal Phyla	3 weeks
<i>End of 2<sup>nd</sup> semester</i>	

## Behavioral Expectations

1. Tardy guidelines are in the student handbook and will be enforced.
2. Bring required materials to class daily.
3. Do not “pack up” until you are told or until the bell rings.
4. Electronic devices should not be used without permission. **Students must place phone in numbered phone holder during class.**
5. Help keep classroom cleanliness and orderliness. Clean up after labs and push your chairs under the table before leaving class.
6. Except for drinking water, sugary drinks and food is not permitted. If you were given permission to eat (on certain occasions) make sure you clean up after yourself or you will get written up.
7. Use the designated bathroom pass before you leave for a bathroom break.
8. Above all remember our class mantra: **RESPECT**. We expect a daily display of good manners. Be courteous and respectful to the teacher and your classmates. Every student in the classroom is entitled to a safe and respectful environment. This will be adhered to without exception daily.

### **Tardy Policy:**

Students are expected to be in class and ready to begin work before the tardy bell sounds. Upon the first tardy to any class during a 9-week grading period, teacher will review tardy policy with student.

During the school day, repeated tardiness to the same class will result in assignment of the following consequences:

**1st tardy:** verbal warning

**2nd tardy:** one-day private detention with teacher and parent contact

**3rd tardy:** referral to administrator and one day of administrative lunch detention

**4th & subsequent tardy:** referral to administrator and after school detention (2 hours or more)

### **Honor Code**

Cheating has been defined as giving or receiving, in any form, information relating to a gradable experience including the use of sources of information other than those specifically approved by the teacher, either during or outside of class. I will strictly enforce the honor code policy as described in your student handbook. Violations of the honor code will result in a zero for the assignment and an honor code violation form placed in the student's disciplinary file. Read the student handbook carefully to fully understand what constitutes an honor code violation.

### **Late Work**

- A grade of zero will be entered into the gradebook until the assignment is submitted.
- Upon submission, teachers will deduct 15% of the assignment grade if the assignment is turned in past the due date.
- If a student fails to turn in a late or missing assignment by the end of the unit, teachers will enter a zero for the assignment in the gradebook.
- Teachers will deduct 25% of the assignment grade if the assignment is turned in past the end of unit major assessment.

### **Make-Up Work**

Upon return to school, students will have an equal number of days as they were absent to complete any late or missing assignments (practice, major, and minor) for full credit. Teachers will enter a zero for any assignment not submitted on the assignment **due date**.

- If the assignment has still not been submitted within the absent day count, but before the end of unit, teachers will deduct 15% of the assignment grade.
- If a student fails to turn in a late or missing assignment by the end of the unit, teachers will deduct 25% of the assignment grade if the assignment is turned in past the end of unit major assessment

### **Missed Work**

There will access the class website. **It is your duty to obtain notes, homework and handouts that you missed.** The best way to keep up with missed work is to check my course on the online learning platform daily to keep you informed of what you missed.

### **Help Sessions**

Extra help is available during and after school. Please see me to arrange a mutually agreeable time. Biology takes practice and continuously builds on itself. It is important that you master all concepts before moving on to the next one.

### **Retake Policy**

Students would have one opportunity to recover their grade on each major assessment if they scored below 75% on the initial attempt. Recovery is not provided for minor or practice assignments.

- Students can earn a maximum grade of 75% on the recovered major assignment. Students who earn between 75 – 100 on the recovered assignment will receive 75%. Students who earn below 75 on the recovered assignment will receive the grade earned or the original grade, whichever is higher.
- To best position students for success, teachers may require students to complete any missing assignments, remediation activities, and/or attend extra-help sessions prior to recovery opportunities.
- Recovery must be requested by the student and completed prior to the due date for the next major assessment.

## Final Exam

During second semester this test is the EOC and is worth 20% of your final grade.

**Infinite Campus:** All parents may access student grades at any time using Infinite Campus. Please visit the school web site [www.northviewhigh.com](http://www.northviewhigh.com) and go to parent information to register. A few days after you register you may come by the school office to receive your password and begin accessing student grades and attendance.

## Grade Determination

Fulton County Grading Scale will be used.

A = 100 - 90    B = 80-89    C = 79-70    Below 70 is failing

	First Semester	Second Semester
• Major Assessments	55%	40%
• Minor Assessments (Labs, quizzes)	35%	30%
• Practice (Homework/Classwork)	10%	10%
• EOC	--	20%

## Northview Science Fee Request

Hands-on science is common practice at Northview and thus requires expendable materials for the many laboratory investigations and activities often completed in science class. The science department is funded by the school for major equipment and supplies; however expendable items often necessary for the success of the many investigations conducted must be purchased independently. As a result, we are requesting for each family to support our hands-on curriculum. Any amount is appreciated, \$25 is average, to purchase such expendable items. Values above the stated amount are greatly appreciated.

Please understand that this is a voluntary contribution and has no bearing on your student's academic progress. Your student will, of course, participate fully in all laboratory investigations/activities.

**Thank you in advance for your attention and support as we strive to expand your student's learning experience. Please check the appropriate box below and sign in the space provided. Place this letter, along with any funds, in an envelope and seal it. If you choose not to make a contribution at this time, please check below and return this form in the same manner.**

We look forward to making this an exciting and dynamic school year for each of your students. Every dollar you provide will directly impact the learning experience of your student in our science program.

Thank you in advance for your support!

Sincerely,

The Northview HS Science Staff

- 
- ☐ Please find the enclosed CHECK in the amount of \_\_\_\_\_.  
Please make checks payable to "Northview High School or NHS".
- ☐ Please find the enclosed CASH in the amount of \_\_\_\_\_.
- ☐ I choose to donate using the online student payment (OSP) platform. Use Website Link or QR Code.  
<https://tinyurl.com/36zzdwd5>  
Add description: Lab supplies and parent name or child name. If you would like to contribute an amount other than \$25, please feel free to send in a check or cash to your child's science teacher.
- ☐ I choose NOT to donate at this time.

Parent's Signature \_\_\_\_\_ Date: \_\_\_\_\_

