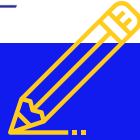




COLLEGE PARK ELEMENTARY

— Collaborate-Nurture-Empower —

PHASES



PHASE III – BEGINS SEP 21 FOR ONE FULL DAY OF IN-PERSON INSTRUCTION PER WEEK

PHASE IV – BEGINS OCT 5 FOR TWO FULL DAYS OF IN-PERSON INSTRUCTION PER WEEK

FACE TO FACE – BEGINS OCT 14 FOR FULL-TIME IN-PERSON INSTRUCTION (OPTIONAL)

WHAT DOES THAT MEAN FOR YOUR STUDENT?

YOU GET TO CHOOSE.

YOU HAVE A CHOICE

- You may come back to face-to face 10-14-2020
or
- You may remain in Universal Remote Learning until 12-18-2020

WELCOME BACK STUDENTS!

FACE-TO-FACE
OR
UNIVERSAL REMOTE LEARNING
INSTRUCTION

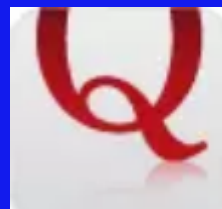
YOU HAVE TO SUBMIT YOUR CHOICE

PLEASE HAVE YOUR STUDENT'S ID NUMBER (THIS IS THE SAME AS THEIR LUNCH NUMBER)

YOU WILL HAVE A CHOICE FOR IN-PERSON OR REMOTE LEARNING FOR EACH PHASE

IF YOU HAVE MULTIPLE CHILDREN, YOU WILL NEED TO ENTER YOUR CHOICE FOR EACH CHILD SEPARATELY

TAKE SURVEY



Online Survey Software |
Qualtrics Survey Solutions

The most powerful, simple and...

fultonschools.az1.qualtrics.com

Deadline Friday, September 18, 2020