



GSE: S3L1a-b, ELAGSE3SL1;  
VA3.CR.2a

## Georgia On My Mind

Mary Jane Stone

In a fun at school “field trip”, students will identify plants and animals of the Piedmont, present on their own campus. They will learn to analyze direct observations and record their observations by drawing and writing in a field journal. We will discuss differences and similarities to the other diverse biomes of Georgia, the interdependence of species, the effects of man on the environment, and the importance of habitat preservation.

### Live @ Your School

50 minute workshop per class, outdoor program, multiple sessions can be booked back-to-back; inquire for fall and spring dates



ELAGSE3RL2, ELAGSE3RL3, ELAGSE3RL9, ELAGSE3RI9

## Far Flung Fairytales

Barry Stewart Mann

Favorite fairy tales can be found in far-flung places - in this program, Barry and his handy friend Fargo the Flying Frog explore variations of familiar stories from around the globe. The program includes "Lon Po Po," a variant of "Little Red Riding Hood" from China; "Mufaro's Beautiful Daughters," a magical Cinderella story from Zimbabwe; a Caribbean version of "Rumpelstiltskin" called "The Girl Who Spun Gold," and a reimagining of "Jack and the Beanstalk" set in Mexico titled "Paco and the Giant Chile Plant." The program brings stories to life with colorful props, costume pieces, puppets, music, cultural artifacts, and opportunities for audience response.

### Virtual

Live Stream Performance, 50 min.; OR Pre-recorded, 50 min. w/ optional live Q&A, available for 2 weeks

### Live @ Your School

Assembly-style, 50 minutes

### Live @ the Museum

Assembly-style, 50 min, 9:30 & 10:30;



GSE: SS3H2a,b,c; TA3.RE.1a,b;  
TA3.CN.1a

## The Adventures of Hernando de Soto as told by Survivor Juan Carlos Rodriguez

Cathy Kaemmerlen with Actor Alex Oakley

A true adventure story of Conquistador Hernando de Soto's exploration of La Florida, into Georgia, the entire Southeastern United States, and ending at the mouth of the Mississippi River, where he met his death. Told by survivor, Juan Carlos Rodriguez, one of fourteen on the expedition who made it back to Spain, Rodriguez looks back on his times with de Soto, interactions with the American Indians, and the search for gold and glory for Spain. With slides, audience participation, authentic chain mail and conquistador helmet, learn what it was like to spend over four years of your life facing dangers and the unknown in conquering and exploring the southeastern part of the United States.

### Live @ Your School

Assembly-style, 50 minutes

### Live @ the Museum

Assembly-style, 50 min., 9:30 & 10:30;



GSE: S2E3a

## Georgia Wildlife Journey

Chattahoochee Nature Center

This program introduces students to native animals that live here in the Piedmont region of Georgia. Students investigate a mammal, reptile, and bird of prey to learn about their adaptations that help them survive in their habitats. In addition to meeting the animals, students will learn the “language” of the natural world.

### Virtual

Live-stream, 50 minutes

### Live @ Your School

Assembly-style, 50 minutes;

### Live @ the Museum

Assembly-style, 50 min., 9:30 & 10:30;



GSE: SS3H2a, SS3H3a,c;  
TAE.RE.1a,b; TAE.CN.1a

## Pilgrim Courage

Cathy Kaemmerlen

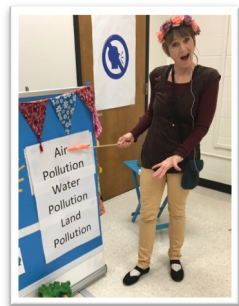
Follow the story of the courageous pilgrim voyage of 1620 from England to the New World, continuing through the first year at Plymouth Colony, as told through the eyes of Mary Allerton, 4 years old at the time of the pilgrimage and the last living survivor of the Mayflower voyage. Hear firsthand what it was like to spend 65 days at sea; the struggle to start a new settlement and survive the first winter; the impact of the Mayflower Compact; making peace with area Indians; and the first harvest feast. Performed as a first person narrative, in authentic period costuming: "One small candle may light a thousand...out of small beginnings, greater things have been produced."

### Live @ Your School

Assembly-style, 50 minutes

### Live @ the Museum

Assembly-style, 50 min., 9:30 & 10:30;



GSE: S3L1; S3L2; TA3.RE.1;  
TA3.CN.1

## Pollution Solutions

Kay Rosenblum

As Mother Nature, Kay Rosenblum will magically whisk your students to all five regions of Georgia to look for signs of pollution and its impact. We'll “meet” some of Georgia's endangered animals and visit polluted lands and waterways. Kay's use of puppets, magic tricks and guided improvisations will keep your students involved and learning. Finally, students will discuss how they can make a difference and learn a song to help them remember to do what they can to help the Earth.

### Virtual

Live Streamed, 50 minutes

### Live @ Your School

Assembly-style, 50 minutes

### Live @ the Museum

Assembly-style, 50 min performance + 50 min activity, 9:30 & 10:30,



GSE: ELAGSE3RF3: ELAGSE3L5,  
TA3.RE.1

## Word Collector

Jerry G. White

Literacy-with a Focus on Phonetics! This is an interactive, and performance based program presented by Storyteller and Percussionist Jerry G. White. Using the book, *The Word Collector* by Peter H. Reynolds as its guide, students will not only collect words, but other skills useful in journey to reading.



### Live @ Your School

Assembly-style, 50 minutes

### Live @ the Museum

Assembly-style, 50 min., 9:30 & 10:30,



GSE: ELAGSE3L5a, TA3.RE.1

## Ms Noodlehead Goes to School

Cathy Kaemmerlen

Ms. Noodlehead works at the Spaghetti Factory. But she continues to mix things up and perform tasks literally. Ms. Noodlehead puts on a "tongue in cheek" play on words, with the use of five audience members, using a list of idioms. Once again, she does exactly as she is told, interpreting the idioms literally. It's all fun and games as the drama unfolds with the princess who was born with a silver spoon in her mouth and the prince who carries a torch (an Olympic one?) for the princess.

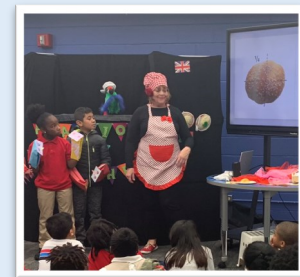


### Live @ Your School

Assembly-style, 50 minutes

### Live @ the Museum

Assembly-style, 50 min., 9:30 & 10:30,



GSE: MGSE3.NF.1, MGSE3.NF.2,  
MGSE3.NF.3, TA3.RE.1

## Fractions Are Everywhere

Neha Bhatt and Jan Jensen

Have you ever noticed that FRACTIONS ARE EVERYWHERE? Join Chef Jan as she travels around the world with her featured friend, Steve the Parrot. Students develop an understanding of fractions by helping Chef Jan figure out how to share her creations with Steve's many friends.



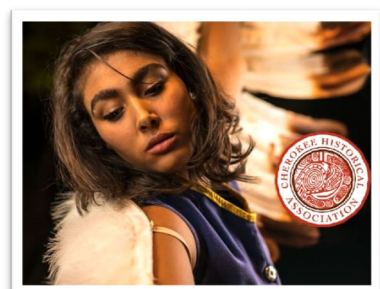
### Live @ Your School

Assembly-style, 50 minutes

### Live @ the Museum

Assembly-style, 50 min., 9:30 & 10:30;

**Hands-on activity coming soon!**



GSE: SS3H1, SS3H2, SS3G3a,  
TAE.RE.1a,b, TAE.CN.1a

## Cherokee Tales

Bright Star



The Cherokee People have a rich history of myths, legends, and folktales that explain everything from the creation of the world to how the plants and animals around us came to look and behave the way they do today. In partnership with the Cherokee Historical Association, this play is a great way to introduce young audiences to the Cherokee people.

### Live @ the Museum

Assembly-style, 50 min., 9:15, 10:30 & 11:45,

**MORE FREE RESOURCES FOR  
THIRD GRADE!**



Little Videos to Jump-Start Learning

Find short, fun videos to share with your students!  
Storytellers, Puppetry, Music, Movement & More!

[www.youtube.com/c/TeachingMuseum](http://www.youtube.com/c/TeachingMuseum)



CHECK OUT THESE STEM LESSONS FOR YOUR CLASS!



FULTON COUNTY  
arts & culture

Major funding is provided by the Fulton County Board of Commissioners.



This project is supported in part by the National Endowment for the Arts.