

# WOLF PACK CREED

At Wolf Creek we:  
 P - have a Positive Attitude  
 A - are Accountable for our choices  
 C - model good Character  
 K - show Kindness to everyone

Our PACK is ready to achieve great things!  
 We will: be ENGAGED in our learning process, be ACCOUNTABLE for our actions, be RESPONSIBLE for our growth and academic achievement, be a LEADER in our school and our community. We are BUILDING Pathways To Success!

**Wolf P.A.C.K. "Sharpen the Saw" Expectations**

	Calendar	Restrooms	hallway	Playground	Assembly	Courtyard	Bus
<b>P</b>	...	...	...	...	...	...	...
<b>A</b>	...	...	...	...	...	...	...
<b>C</b>	...	...	...	...	...	...	...
<b>K</b>	...	...	...	...	...	...	...

**Put First Things 1<sup>st</sup>...**

then let's synergize



Click here



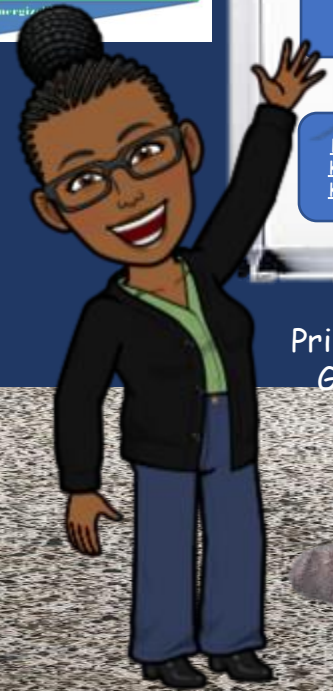
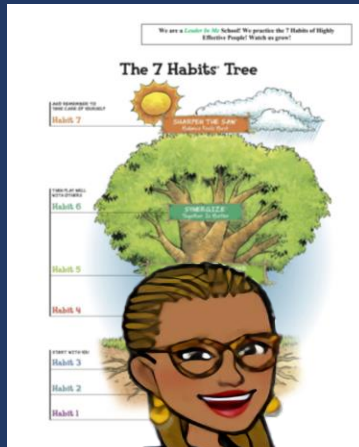
# Welcome to Wolf Creek Elementary

- Welcome to WCES
- Principal's Message
- Assessment
- Curriculum
- Literacy
- Counseling Services
- Response to Intervention
- Social Emotional Learning
- SEC Services
- TAG Services Tag Referral
- Pre-K
- Registration Process
- Clinic Services
- Nutrition and Lunch Fees
- Attendance Policy
- Family Resources
- Discipline
- School Tour
- Cafeteria Expectation
- Playground Expectations
- Kindergarten Visit 1
- Kindergarten Visit 2
- Kindergarten Visit 3
- Physical Education Lesson
- Student Leaders
- Media Center
- Who to Contact
- New Teachers
- LIM Testimonials
- New Hire Information



WOLF CREEK ELEMENTARY'S MISSION STATEMENT

**WOLF CREEK ELEMENTARY IS TRANSFORMING STUDENTS INTO GLOBALLY MINDED, ACCOUNTABLE, LIFELONG LEARNERS AND CHAMPIONS WHO DISPLAY STRONG POSITIVE LEADERSHIP SKILLS.**



Principal Glass



## Building Pathways to Success

Assistant Principal Nichols



Assistant Principal Bragg