



# FAVE Rising 6<sup>th</sup> Grade Information

Welcome!



# Dr. Taylor Barton, Principal





# Middle School Support



Monica Roberts

MS Assistant Principal

[robertsml@fultonschools.org](mailto:robertsml@fultonschools.org)



Julie Gracey

MS Counselor

[graceyj@fultonschools.org](mailto:graceyj@fultonschools.org)



Shanna Richardson

Grade Level Chair, 6th

[richardsons1@fultonschools.org](mailto:richardsons1@fultonschools.org)



# Administrative Team



Brittney Burns

HS Assistant Principal

[burnsb2@fultonschools.org](mailto:burnsb2@fultonschools.org)



Megan Endicott

ES Assistant Principal

[endicott@fultonschools.org](mailto:endicott@fultonschools.org)



# School Governance Council & PTA

## SGC

- The purpose of the School Governance Council is to provide parents, school staff, and community members with a leadership role in the management of the school. The School Governance Council is a governing body that is representative of the community and the school but operates under the control and management of the Board of Education. The Council is responsible for making decisions regarding the strategic direction of the school including:

- Approve the school strategic plan and updates
- Approve the annual budget and annual resource allocations
- Manage the Request for Flexibility process
- Participate in hiring the principal (in the case of a vacancy)
- Provide annual feedback on principal performance.

## PTA

- FAVE PTA is forming! Please consider joining a team that ensures every child's potential is a reality by engaging and empowering families and communities.



**Please contact Ms. Linda Brooks for more information at [brookslg@fultonschools.org](mailto:brookslg@fultonschools.org).**



# The FAVE Way

- Our motto at the Fulton Academy of Virtual Excellence is to encompass what it means to be a part of a community, show respect for ourselves and others, be 100% accountable for our actions, and display constant and clear communication. This is the FAVE Way.
- The FAVE Way is comprised of our four value words:
  - Community
  - Respect
  - Accountability
  - Communication

**FAVE** CODIE'S WORDS OF WISDOM

**COMMUNITY**

- Participate in school events
- Actively participate in groups
- Be safe with personal information

**RESPECT**

- Listen while others speak
- "Raise your hand" when you have a question
- Turn your camera on during meetings

**ACCOUNTABILITY**

- Show up to classes on time
- Keep a calendar to stay on track
- Submit your assignments on time

**COMMUNICATION**

- Contact your teacher if you are absent
- Ask questions when you are confused
- Be mindful of other's thoughts and feelings



# Devices & Camera On Policy

- Students at FAVE are required to attend live lessons with their device cameras on and use a standard FAVE or standard Microsoft Teams background filter. Students must remain visible on camera for the duration of live instruction to be marked present. Students may be off camera for teacher approved breaks.
- An IT ticket must be submitted within 24 hours if a student is experiencing camera issues and cannot use his/her camera. If a new device is needed, devices must be picked up within three school days to avoid students being marked absent. Exceptions to this policy may be approved by school administration.

FCS IT Department: 404-254-HELP or [servicedesk@fultonschools.org](mailto:servicedesk@fultonschools.org)



# FAVE Parent Responsibilities

- CANVAS Parent Portal- check your child's work weekly
- Provide your child with a quiet area for study
- **At Home Learning Coaches**
  - At every grade level, a student needs at home support. The amount of at home support depends on the level of independence the student has.
- At the middle school level, a learning coach's responsibility depends on the student's readiness and ability to learn independently. Homeroom teachers will reach out frequently to a student's at home learning coach to discuss progress, successes, and areas of growth for the student.





# Middle School Bell Schedule



**Fulton Academy of Virtual Excellence**

Secondary Bell Schedule					
Time	Monday	Tuesday	Wednesday	Thursday	Friday
8:00am-8:20am	Homeroom With 1 <sup>st</sup> Period Class	Homeroom With 1 <sup>st</sup> Period Class	<b>FAVE Owl Block</b> DBAs with Flex Students  1-on-1 Support with Teachers or Counselor  Independent Assignments  Directed Studies  <b>Draft</b>	Homeroom With 1 <sup>st</sup> Period Class	Homeroom With 1 <sup>st</sup> Period Class
8:20am-9:10am	Period 1	Period 1		Period 1	Period 1
9:15am-10:05am	Period 2	Period 2		Period 2	Period 2
10:10am-11:00am	Period 3	Period 3		Period 3	Period 3
11:00am-11:35am	Lunch	Lunch		Lunch	Lunch
11:40am-12:10pm	RTI	RTI		RTI	RTI
12:15pm-1:05pm	Period 4	Period 4		Period 4	Period 4
1:10pm-2:00pm	Period 5	Period 5		Period 5	Period 5
2:05pm-2:55pm	Period 6	Period 6	Period 6	Period 6	



# Academics



MATH



SCIENCE



SOCIAL  
STUDIES



LANGUAGE  
ARTS



READING



# Levels of Instruction

The following course levels are offered for 6th grade courses:

- On-Level
  - Advanced (Math and ELA)
  - Accelerated (7)
  - Enhanced (Math)
  - TAG (Science and Social Studies)
- The On-Level courses cover all GSE standards.
  - Typical Advanced courses (not including math) cover all GSE standards and are more rigorous and faster-paced than the On-Level course.
  - Accelerated courses are for students that are working a year or more ahead.



# Science and Social Studies

## **Earth Science 6**

- Geology
- Meteorology
- Astronomy

## **Social Studies 6**

- Europe
- South America
- Central America
- Oceania



# ELA and Math

## English Language Arts

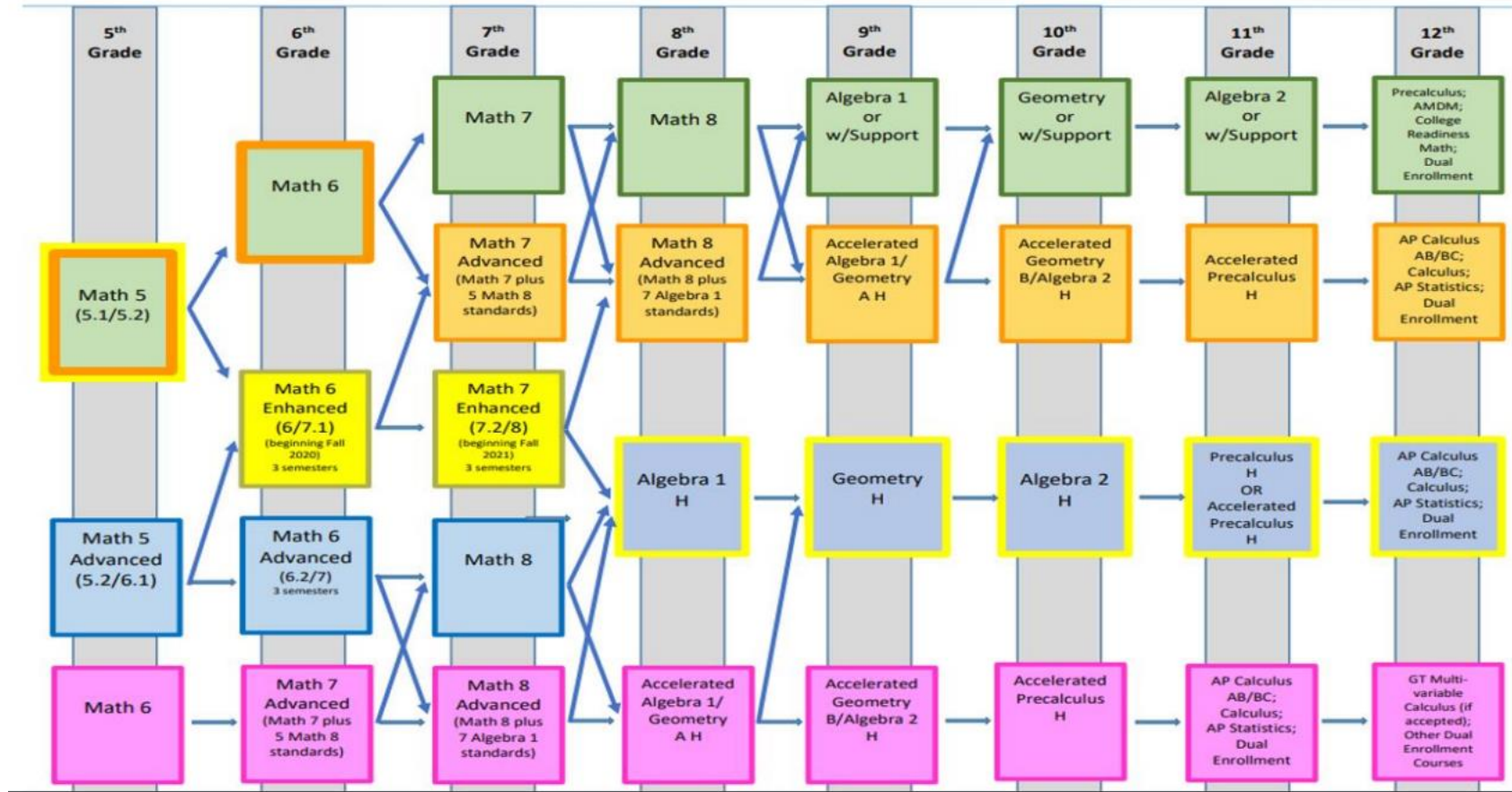
- Reading
- Writing
- Speaking and Listening

## Math

- Number Sense
- Ratios and Proportions
- Geometry
- Expressions and Equations
- Statistics and Probability



# Fulton County Math Pathways



[Link to FCS Math Pathway Chart](#)



# Reading

- All 6th grade students will be enrolled in Reading for the 2022-2023 school year. The Reading Course offered is a workshop model including mini-lessons, conferencing, and small group work. Students develop strategies and skills necessary to improve reading stamina, fluency, comprehension, and engagement with a variety of genres and material.
- In the 7th grade, students who meet the placement criteria to take a World Language course may do so; however, it is not required. Our World Language course options for 7th grade students who qualify are Spanish and French with a FAVE Teacher. Students may also elect to take Chinese, German or Latin asynchronously through FVS without a live teacher and daily lessons.



# Connections

- “Connections” classes provide opportunities for students to receive additional exposure to arts, science, career awareness, physical education, etc. At FAVE, connections courses are not requested.
- Middle school connections for the 2022-2023 school year are semester based. Students will be enrolled in 4 connections courses including a reading course.
- General Connections are randomly assigned and can include Career Awareness, PE, Health, Reading, Computer Gaming, Study Skills and Visual Arts.





# Course verification

- Recommendations for sixth grade courses are made at the student's elementary school according to the placement criteria established by Fulton County.
- Students may not waive into TAG courses. TAG placement occurs by testing only.
- Round 2 Course Verifications are April 16<sup>th</sup> – April 20<sup>th</sup>. Families should visit <https://tinyurl.com/FAVEMiddle> for more information.



# School to Home Communication



- Owl Express - Weekly Newsletter
- Teacher Advisor Calls
- Phone Calls/E-Mail
- Microsoft 365 Class Notebook (OneNote)
- Conferences
- Grade Reporting (every 4 ½ weeks)
- Microsoft Teams
- School Messages via Blackboard
- School Website: [fultonschools.org/fave](http://fultonschools.org/fave)
- Twitter and Instagram: @FCS\_FAVE



# Homeroom Teacher as Advisor

Each Middle School student is assigned a teacher as advisor. Their Homeroom Teacher will serve in this role. Teacher Advisors will communicate frequently with the learning coach and students about the student's progress, areas of strength, and areas of improvement. The Homeroom Teacher will also provide live instruction on skills to help students be successful at FAVE.



# Counseling Services

- Classroom Guidance
- Individual/Small Group Counseling
- Coordination of:
  - Parent/Teacher Conferences
  - Referrals to outside agencies
  - Career Programs
  - Mentoring
  - Stress Management Help
  - Organizational Help
  - New Student Orientation
  - Transition Programs
- Consultation in:
  - RtI Meetings
  - IEP Meetings
  - Discipline Matters
  - Peer Disputes
  - Parent/Teacher/Student Conferences
  - Academic Goal Setting





# Owl Block & Flexible Attendance

## Owl Block

- Owl block is scheduled on Wednesdays and serves as its own asynchronous instructional day. This dedicated time is for the educator to work closely with students on academics, social-emotional learning, directed studies, SAT/ACT prep, counseling, and community building.

## Flexible Attendance

- Students who excel academically may qualify for flexible attendance.
- Specific criteria for flexible attendance eligibility will be shared at the start of the 2022-2023 school year.



# Extracurricular Activities

- Clubs
- E-Sports
- Lunch Bunch
- Student Ambassadors
- FAVE TV





# PBIS Rewards

PBIS Rewards is an on-line system we use to recognize our students when they exhibit positive behavior. Students are awarded “PBIS Points” during class and can exchange their points for items or participation in events. We are also in the process of planning our “Owl Nest” (school store) that will have additional items students can exchange points for.



# School Supplies

- FCS Issued Device
- Workspace Free of Distractions

## Suggested

- Headphones
- Pen/Paper for Note Taking
- Spiral Notebook
- Agenda/ Calendar
- Stylus
- Whiteboard







# Questions

Please feel free to unmute or drop in chat.



# TAG Information

Ms. April Jordan, Gifted Chair