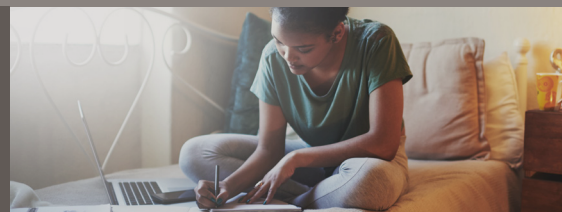


## SAT® & ACT® Test Prep and Professional Development



### TEST PREP STUDENT CLASSES

#### After-School SAT/ACT Prep Classes

SAT or ACT Fundamentals (Classroom or LiveOnline) course

**\$4,250** – up to 20 students/section  
(including up to 5 scholarship students/section)

#### During School SAT/ACT Prep Classes

SAT or ACT Semester-Long (Classroom or LiveOnline) course  
A/B Block schedule class meeting every other day for 1.5 hours each

**\$6,250** – up to 20 students/section  
(including up to 5 scholarship students/section)

### TEACHER PROFESSIONAL DEVELOPMENT TRAINING

#### Teacher Training SAT/ACT Professional Development Course

SAT or ACT Professional Development (In-Person or LiveOnline)  
every other day for 1.5 hours each

**Option #1 – Small Group**  
**\$1,500/teacher** – minimum of 4 teachers/section

**Option #2 – Large Group**  
**\$16,000** – up to 16 teachers/section

#### Student Materials to Accompany Teacher Training SAT/ACT Professional Development Course

SAT or ACT Student Materials  
**\$75/student**

#### Teacher Training to Integrate Test-Taking Strategies Into Core Content Areas

Core Content Area Professional Development  
(In-Person or LiveOnline)

**\$5,000** – up to 35 teachers/section

### Components

Up to 15 hours of instruction, including:

- Student materials
- Online student portal
- Instructor
- 3 practice tests
- Administrator dashboard

Up to 44 hours of Instruction, including:

- Student materials
- Online student portal
- Instructor
- 4 practice tests
- Administrator dashboard

Up to 24 hours of training, including:

- Teacher materials
- Trainer(s)
- Online teacher resources
- Administrator dashboard

- Student materials
- Online student portal

Up to 4 hours of training, including:

- Teacher materials
- Trainer

For more information contact [Wesley.Jordan@review.com](mailto:Wesley.Jordan@review.com) or [Eric.Bell@review.com](mailto:Eric.Bell@review.com)

