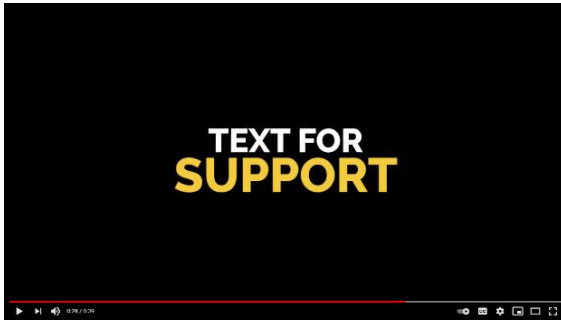


Immediate Student Resources

If you are experiencing an emergency, please seek immediate assistance and/or call 911. For your convenience, some resources are listed below:

Mental Health

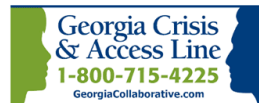


[Text4Help- Fulton County Schools Student PSA Video](#)
[Learn More About Text4Help Here](#)

TEXT4HELP
1-844-201-9946

SAFE • FREE • CONFIDENTIAL

A CRISIS HAS NO SCHEDULE



Help is available 24/7 for problems with developmental disabilities, mental health, drugs, or alcohol.
Provided through the Georgia Collaborative ASO

You Are Not Alone . . . Help is in your hand.

When life is making you lonely or feel that no one understands, let your fingers do the talking for you. Use your phone to CHAT, TEXT, or CALL anytime, day or night, to reach a mental health professional for support.

With just a few easy taps, help is on the line.

- Download the **MyGCAL** app for your Android or Apple device to access assistance 24/7, 365 days a year!
- Touch CHAT, TEXT or CALL to receive immediate support from a caring GCAL professional including licensed clinicians.



MyGCAL is specifically designed for Georgia's youth to get help in times of need.

You Are Not Alone . . . click or call the Georgia Crisis and Access Line (GCAL) at 1-800-715-4225.

#NotAloneRCPS

**TEENS
TEXT THE WORD
"SAFE"
AND YOUR
CURRENT LOCATION**
(STREET ADDRESS, CITY, STATE)
TO
4HELP (44357)
FOR IMMEDIATE HELP
WITH THE OPTION FOR
INTERACTIVE TEXTING

TXT4HELP

TXT 4 HELP is a nationwide, 24-hour text-for-support service for youth in crisis.

How it works:

Text the word "safe" and your current location (city/state/zip) to 4HELP (44357).

Within seconds, you will receive a message with the closest Safe Place location. Reply with "2Chat" to text one-on-one with a professional. It's quick, easy, safe, and confidential.

988

SUICIDE & CRISIS
LIFELINE

Food/Housing

NEED HELP?

TRY CONNECT FULTON

WWW.CONNECTFULTON.FINDHELP.COM

Brought to you by Fulton County Schools

Georgia Department of Community Affairs
<https://georgiarentalassistance.ga.gov/>

2-1-1

United Way of Greater Atlanta

[Call. Click. Connect.]

Fulton County COVID-19
Emergency Rental
Assistance Program

TEXT 'FINDFOOD'
IN ENGLISH OR
TEXTO 'COMIDA'
EN ESPAÑOL

TO 888-976-2232 (ACFB),
TO LOCATE FOOD PANTRIES
CLOSEST TO YOU.

Emergency Mental Health Resources

The following facilities provide 24-hour assistance and have shared with the district that they will complete emergency assessments at no cost. If your child already receives support from a mental health provider, you may wish to contact that professional first. You may also want to check with your insurance company regarding mental/behavioral health coverage. Please note that the district does not endorse any provider, makes no representations as to the effectiveness of these providers, and makes this information available only as a helpful resource.

North Fulton	South Fulton
<p><u>Ridgeview Institute</u> 3995 South Cobb Drive, SE Smyrna, GA 30080 www.ridgeviewinstitute.com 770- 434-4567 *Ages 12 and older.</p> <p><u>Children’s Hospital of Atlanta</u> <u>Emergency Services</u> Children’s Egleston Hospital 1405 Clifton Road NE Atlanta, GA 30322</p> <p>Children’s Hughes Spalding Hospital 35 Jesse Hill Jr. Drive SE Atlanta, GA 30303</p> <p>Children’s Scottish Rite Hospital 1001 Johnson Ferry Road NE Atlanta, GA 30342 www.choa.org *All ages</p> <p><u>Summit Ridge Center</u> 250 Scenic Hwy. Lawrenceville, GA 30046 www.summitridgehospital.net 678-442-5858 *Ages 12 and older.</p> <p><u>Crescent Pines Hospital</u> 1000 Eagles Landing Pkwy Stockbridge, GA 30281 https://crescentpineshospital.com/ 770-474-8888 *Ages 4 and older.</p>	<p><u>Peachford Hospital</u> 2151 Peachford Road Atlanta, Georgia 30338 https://peachford.com/ 770-454-2302 *Ages 4-17.</p> <p><u>Anchor Hospital</u> 5454 Yorktown Drive College Park, GA 30349 www.anchorhospital.com 770-991-6044; 770-991-6045 *No age limits on assessments. Must be 13 and older for hospitalization.</p> <p><u>Grady Behavioral Health Clinic</u> 80 Jesse Hill, Jr. Drive Atlanta, GA 30303 https://www.gradyhealth.org/specialty/behavioral-health/ 404-616-1000 *All ages.</p> <p><u>Riverwoods Behavioral Health (adolescents and adults)</u> 223 Medical Center Drive Riverdale, GA 30274 www.riverwoodsbehavioral.com 770-991-8500 *Ages 11 and older.</p>
Nationwide Hotlines	Local Crisis Access/Hotlines
<p><u>Support Lines</u> Call or text the Suicide & Crisis Lifeline at 988 or text the Crisis Text Line at 741741 for free 24/7 support</p>	<p><u>Georgia Crisis and Access Line</u> (Behavioral Health Link-Single Point of Entry) 75 Piedmont Ave., NE Ste. 256 Atlanta, GA 30303 www.behavioralhealthlink.com 1-800-715-4225</p>