



How to ...

Understand Graduation Course and Credit Requirements & View a Student's Academic Progress

Fulton County now provides parents and students virtual access to a student's Academic Plan Progress Report, which is created and located in Infinite Campus. This feature allows students and parents to view a student's status towards meeting graduation requirements within the Parent Portal and within the student's view in Campus Student.

Graduation Course and Credit Requirements

Students within Fulton and throughout the state of Georgia are required to meet a 23-credit requirement and specific course requirements.

Math (4 credits)

Required: Algebra I, Geometry, Algebra II

Selective: Once 4th core Math course

Science (4 credits)

Required: Biology, Physical Science or Physics, Env Science or Chemistry or Earth Systems

Selective: One 4th core Science course

History (3 credits)

Required: Amer Gov (.5 credit), World History, US History and Economics (.5 credit)

English (4 credits)

Required: 9th Lit and 11th American Lit

Selective: 2 core English courses

Health (.5 credits)

PE (.5 credits)

Fine Art/CTAE/World Lang (3 credits)

Electives (4 credits)

View a Student's Academic Progress

Step 1:	Log into Campus Parent
Step 2:	Select Academic Plan
Step 3:	Select Post Grad Location and Post Grad Plans
Step 4:	Select Desired Report
Step 5:	Print Progress Report

Step 1: Log into Campus Parent

Go to the following URL: www.fultonschools.org.

Select the Campus Portal icon in the middle of the page



From the Campus Portal Landing Page, select Campus Parent



Step 2: Select Academic Plan from the menu

If you have multiple students and no plan appears, change the student profile to the desired High School student.

Message Center

Announcements | Inbox

District Announcement
Thursday 09/03/2020

Due to Universal Remote Learning, our attendance processes have changed to accommodate virtual learning. Please read below about the process for virtual and face-to-face attendance.

Elementary (PK- Grade 5)
Virtual Attendance

During Universal Remote Learning, students are marked "participated" by their teacher when a student either attends a synchronous lesson, communicates directly with the school, or submits a work assignment. For different grade levels, this happens at a different frequency as listed below:

Please note: The frequency listed below is a minimum, participation can and should be marked as appropriate

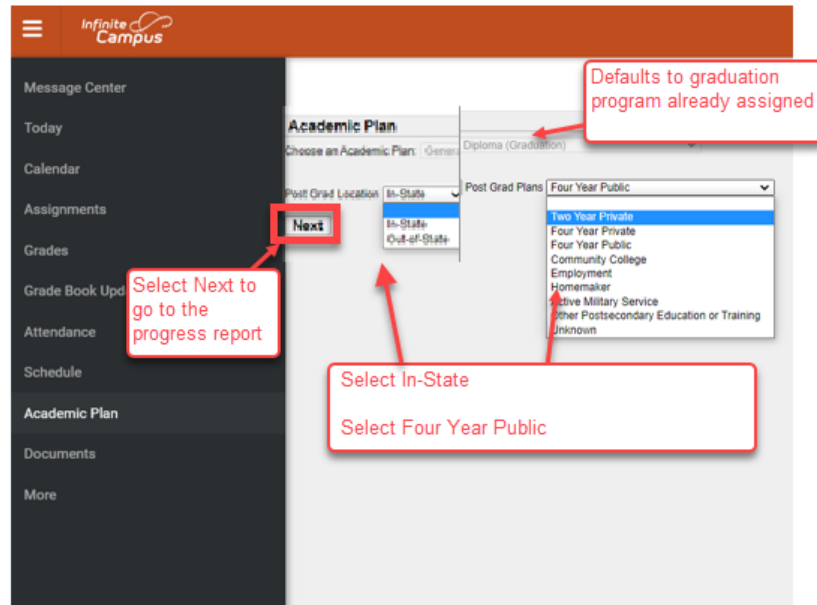
Grade Levels	How frequently is participation marked?
Pre-K (Bright From the Start)	Daily during homeroom
K-1st Grade	1 time weekly during homeroom (based on Learning Bundles)*

If parent of multiple students and receive the message "The selected student does not current have access to academic plan", change your student selection to your High School Student.

Step 3: Select Post Grad Location and Post Grad Plans

Location - Select In-State or Out-of-State based on where the student will go after graduation. If not sure, choose In-State

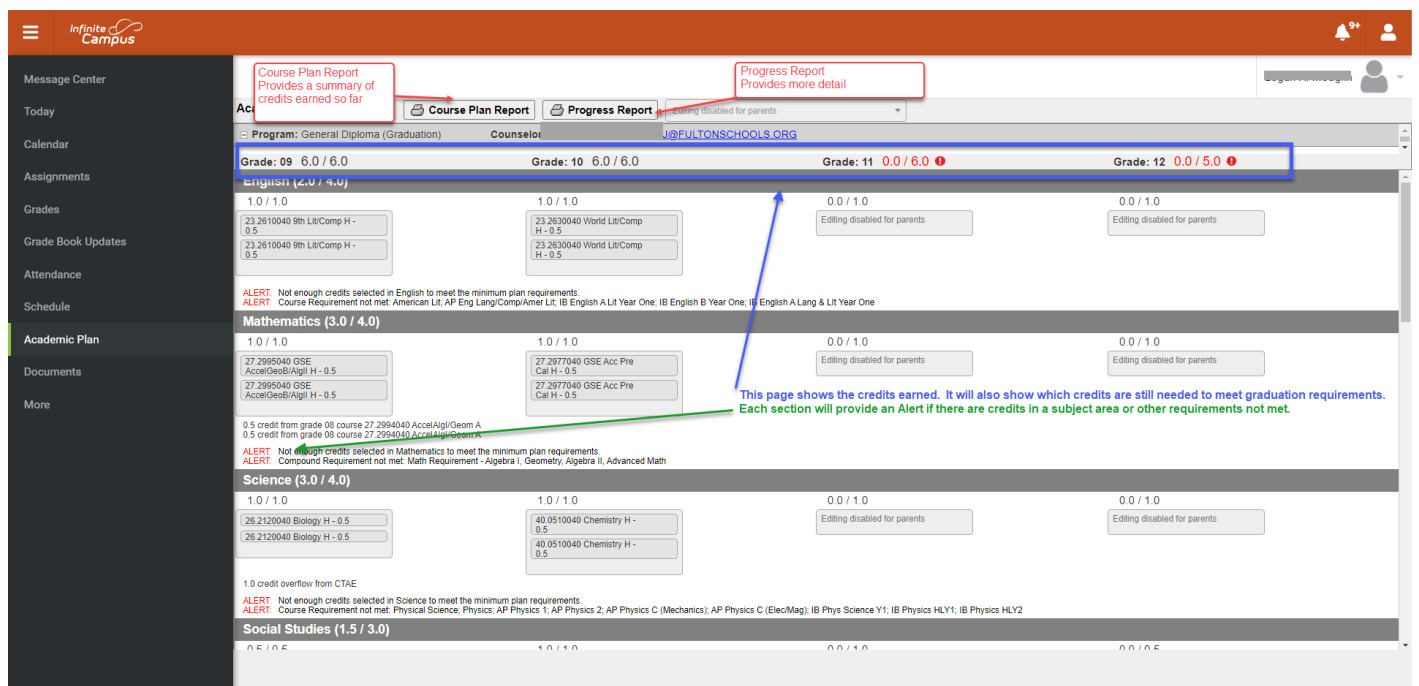
Plans – Select the projected location for post-graduation. If not sure, select Four Year Public. Select Next



Step 4: Academic Plan Page – Select the desired report

Course Plan Report – Similar print out of the page seen on this screen

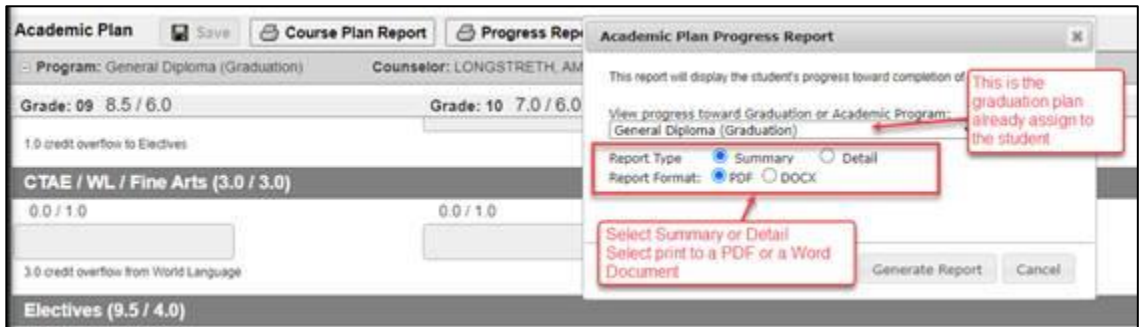
Progress Report – Detailed view of credit type, course requirements, and compound requirements



Step 5: Print Progress Report

Select Progress Report, then select Report Type and Report Format and then Generate

- Type options include Summary or Detail
- Format options include PDF or Document



Note: The report will open in a separate window.

Summary of Academic Plan Progress Report

When viewing the Academic Progress of a student, the following should be noted

1. The **Credit Type** section lists the credits a student earned in a specific content area. This section is noting the credits earned.
2. The **Course Requirements** section shows whether a student has taken, passed, or is planned to take the specific course requirements needed to graduate.
3. A student can be highlighted in green in the Credit Type section but red in the Course Requirement section. It is important that students are highlighted green in **both** sections which indicates that they have met **both** the credit and course requirements needed to graduate.

Credit Type	Grade					Credit Status			Overflow	Total
	08	09	10	11	12	ER	IP	PL		
English		1.0 / 1.0	1.0 / 1.0	1.0 / 1.0	1.0 / 1.0	0.5 / 1.0	2.0	1.0	0.5	3.5 / 4.0
Mathematics	1.0 / 0.0	1.0 / 1.0	1.0 / 1.0	1.0 / 1.0	1.0 / 1.0	0.0 / 0.0	3.0	1.0	1.0	4.0 / 4.0
Science		1.0 / 1.0	0.5 / 1.0	0.0 / 1.0	0.0 / 1.0	1.0 / 1.0	1.5	1.0	1.0	3.5 / 4.0
Social Studies		0.5 / 0.5	1.0 / 1.0	1.0 / 1.0	0.5 / 0.5	0.5 / 0.5	1.5	1.0	0.5	3.0 / 3.0
Health/Personal Fitness		0.5 / 1.0			1.0 / 1.0	0.5 / 0.0	0.5	0.5		1.0 / 1.0
CTAE				1.0 / 0.0		0.0	1.0		-1.0	0.0 / 0.0
World Language	1.0 / 0.0	1.0 / 0.0	1.0 / 0.0			3.0			-3.0	0.0 / 0.0
Fine Arts		1.0 / 0.0	1.0 / 0.0	2.0 / 0.0	1.0 / 0.0	2.0	2.0	1.0	-5.0	0.0 / 0.0
CTAE / WL / Fine Arts	0.0 / 0.0	0.0 / 1.0	0.0 / 1.0	0.0 / 1.0	1.0 / 1.0	0.0			3.0	3.0 / 3.0
Electives		0.0 / 0.5	0.0 / 1.0	0.0 / 1.0	0.0 / 1.5	0.0			6.0	6.0 / 4.0
Total	2.0 / 0.0	6.0 / 6.0	5.5 / 6.0	6.0 / 6.0	4.5 / 5.0	13.5	6.0	4.5		24.0 / 23.0

Course Requirements	Progress
9th Lit / Comp	1.0 / 1.0
American Lit. AP Eng Lang/Comp/Amer Lit. IB English A Lit Year One; IB English B Year One; IB English A Lang & Lit Year One	1.0 / 1.0
Biology. AP Biology; IB Biology Year One	1.0 / 1.0
Physical Science: Physics. AP Physics 1; AP Physics 2; AP Physics C (Mechanics); AP Physics C (Elec/Mag); IB Phys Science Y1; IB Physics HLY1; IB Physics HLY2	0.0 / 1.0
Environmental. AP Environmental. Chemistry; AP Chemistry; Earth Systems; IB Chemistry SLY1; IB Environmental	0.5 / 1.0
American Government. AP Government/Politics US	0.5 / 0.5
World History: AP World History; IB History of Europe/Mid East Year One	1.0 / 1.0
US History; AP US History; IB History of Americas Year One	1.0 / 1.0
Economics: AP Macroeconomics; AP Microeconomics; IB Economics Year One;	0.5 / 0.5
Compound Requirements	Progress
Math Requirement - Algebra I. Geometry. Algebra II. Advanced Math	Complete
Health / Personal Fitness or JROTC	Complete

Detail/Expanded Academic Progress Report

Choose Select All for a more detailed report

* Asterisks indicate student does not meet requirement

Credit Type	08	09	10	11	12	Credit Status	ER	IP	PL	Overflow	Total
English		1.0 / 1.0	1.0 / 1.0	1.0 / 1.0	0.5 / 1.0	2.0	1.0	0.5			*3.5 / 4.0
Grade	Course	Status	Score	Credit toward Academic Plan	Credit Explanation						
09	23.2610040 9th Lit/Comp H	Earned	87	0.5							
09	23.2610040 9th Lit/Comp H	Earned	85	0.5							
10	23.2630040 World Lit/Comp H	Earned	98	0.5							
10	23.2630040 World Lit/Comp H	Earned	95	0.5							
11	23.0510040 11th Am Lit/CompH	In-Progress	No Score	0.5							
11	23.0510040 11th Am Lit/CompH	In-Progress	No Score	0.5							
12	23.0340041 Advanced Comp H	Planned		0.5							
Mathematics		1.0 / 0.0	1.0 / 1.0	1.0 / 1.0	1.0 / 1.0	3.0	1.0	1.0		-1.0	4.0 / 4.0
Grade	Course	Status	Score	Credit toward Academic Plan	Credit Explanation						
08	27.2994040 AccelAlgl/Geom A H	Earned	99	0.5							
08	27.2994040 AccelAlgl/Geom A H	Earned	94	0.5							
09	27.2995040 GSE AccGeoBi/AlglIH	Earned	94	0.5							
09	27.2995040 GSE AccGeoBi/AlglIH	Earned	90	0.5							
10	27.2977040 GSE Acc Pre Cal H	Earned	91	0.5							
10	27.2977040 GSE Acc Pre Cal H	Earned	85	0.5							
11	27.2720000 AP Calculus AB	In-Progress	No Score	0.5							
11	27.2720000 AP Calculus AB	In-Progress	No Score	0.5							
12	27.0740000 AP Statistics	Planned		1.0	1.0 credit overflow to Electi						
10	27.2977040 GSE Acc Pre Cal H	Earned	85	0.5							
11	27.2720000 AP Calculus AB	In-Progress	No Score	0.5							
11	27.2720000 AP Calculus AB	In-Progress	No Score	0.5							
12	27.0740000 AP Statistics	Planned		1.0	1.0 credit overflow to Electives						
Science		1.0 / 1.0	0.5 / 1.0	0.0 / 1.0	1.0 / 1.0	1.5	1.0	1.0			*3.5 / 4.0
Grade	Course	Status	Score	Credit toward Academic Plan	Credit Explanation						
09	26.0120000 Biology	Earned	93	0.5							
09	26.0120000 Biology	Earned	86	0.5							
10	40.0510040 Chemistry H	Earned	87	0.5							
10	40.0510040 Chemistry H	Earned	69	0.0							
11	11.2190000 AP Comp Sci Prin	In-Progress	No Score		0.5 credit overflow from CTAE						
11	11.2190000 AP Comp Sci Prin	In-Progress	No Score		0.5 credit overflow from CTAE						
12	26.0730000 Human Anatmy/Phys	Planned		1.0							
Social Studies		0.5 / 0.5	1.0 / 1.0	1.0 / 1.0	0.5 / 0.5	1.5	1.0	0.5			3.0 / 3.0
Grade	Course	Status	Score	Credit toward Academic Plan	Credit Explanation						
09	45.0570001 World History	Earned	84	0.5							
10	45.0830000 World History	Earned	84	0.5							
10	45.0830000 World History	Earned	84	0.5							
11	45.3810003 GAVS US History A	In-Progress	No Score	0.5							
11	45.3810004 GAVS US History B	Scheduled		0.5							
12	45.0610001 Economics	Planned		0.5							
Health/Personal Fitness		0.5 / 1.0			0.5 / 0.0	0.5	0.5				1.0 / 1.0

Course Requirements					Progress
9th Lit / Comp					1.0 / 1.0
Grade	Course	Status	Score	Credit toward Academic Plan	
09	23.2610040 9th Lit/Comp H	Earned	87	0.5	
09	23.2610040 9th Lit/Comp H	Earned	85	0.5	
American Lit: AP Eng Lang/Comp/Amar Lit; IB English A Lit Year One; IB English B Year One; IB English A Lang & Lit Year One					1.0 / 1.0
Grade	Course	Status	Score	Credit toward Academic Plan	
11	23.0510040 11th Am Lit/CompH	In-Progress			
11	23.0510040 11th Am Lit/CompH	In-Progress	No Score	0.5	
Biology: AP Biology; IB Biology Year One					1.0 / 1.0
Grade	Course	Status	Score	Credit toward Academic Plan	
09	26.0120000 Biology	Earned	93	0.5	
09	26.0120000 Biology	Earned	86	0.5	
Physical Science: Physics; AP Physics 1; AP Physics 2; AP Physics C (Mechanics); AP Physics C (Elec/Mag); IB Phys Science Y1; IB Physics HLY1; IB Physics HLY2					*0.0 / 1.0
Environmental: AP Environmental, Chemistry, AP Chemistry; Earth Systems; IB Chemistry SLY1; IB Environmental					*0.5 / 1.0
Grade	Course	Status	Score	Credit toward Academic Plan	
10	40.0510040 Chemistry I	Earned	87	0.5	
10	40.0510040 Chemistry H	Earned	69	0.0	
Compound Requirements					Progress
Math Requirement - Algebra I, Geometry, Algebra II, Advanced Math					Complete
Grade	Course	Status	Score	Credit toward Academic Plan	
08	27.2994040 AccelAlg/Geom A H	Earned	94	0.5	
08	27.2994040 AccelAlg/Geom A H	Earned	99	0.5	
09	27.2995040 GSE AccGeoB/AlgIIH	Earned	94	0.5	
09	27.2995040 GSE AccGeoB/AlgIIH	Earned	90	0.5	
10	27.2977040 GSE Acc Pre Cal H	Earned	85	0.5	
10	27.2977040 GSE Acc Pre Cal H	Earned	91	0.5	
11	27.2720000 AP Calculus AB	In-Progress	No Score	0.5	
11	27.2720000 AP Calculus AB	In-Progress	No Score	0.5	
12	27.0740000 AP Statistics	Planned		1.0	

Lists Course requirement and approved course names

If a section is highlighted in red, that indicates a student failed a required course and has not taken or retaken it or is not planned to take it