

**FULTON COUNTY SCHOOLS**  
**Fall 2016 - Iowa Assessment**  
**Mean National Percentile**

	<b>2015 Form A 2005 Norms</b>	<i>Crosswalk*</i> <b>2016 Form E 2005 Norms</b>	<i>New Baseline*</i> <b>2016 Form E 2011 Norms</b>
<b>Grade 3</b>			
English Language Arts Total	58	61	54
Math Total	68	74	64
Social Studies	69	67	56
Science	68	70	65
Complete Composite	68	68	59
<b>Grade 5</b>			
English Language Arts Total	63	59	56
Math Total	65	70	59
Social Studies	69	64	64
Science	69	67	60
Complete Composite	66	63	58
<b>Grade 8</b>			
English Language Arts Total	59	57	59
Math Total	60	65	62
Social Studies	60	56	61
Science	67	63	62
Complete Composite	62	60	61

**NOTE: The mean National Percentile Rank = 50<sup>th</sup>ile for all subjects**

\*In the fall of 2016, Fulton County updated the norm referenced test from Form A ITBS to the Form E Iowa Assessment. Form E is a different test that contains content that is more relevant to our current population and is more aligned with our current standards.

The norm group for Form E is from 2011 while the norm group from our previous test is from 2005.

The Iowa and the ITBS with different norms cannot be directly compared.

2016 scores will become baseline data for trend purposes. For 2016 a "cross-walk" will be used for comparison.

The "cross-walk" puts the 2016 scores into the 2005 norm group so that they can be compared to 2015 results.

This "cross-walk" will allow system and school level comparisons but it should not be used for accountability purposes.

In 2017, scores will be presented for 2016 and 2017 with 2011 norms.

**FULTON COUNTY SCHOOLS**  
**Fall 2016 - Iowa Assessment**  
**Grade 3 - Mean National Percentile**

	Total English Language Arts			Total Math			Social Studies			Science		
		<i>Crosswalk*</i>	<i>New Baseline</i>		<i>Crosswalk*</i>	<i>New Baseline</i>		<i>Crosswalk*</i>	<i>New Baseline</i>		<i>Crosswalk*</i>	<i>New Baseline</i>
	2015	2016	2016	2015	2016	2016	2015	2016	2016	2015	2016	2016
	(2005 norms)	(2005 norms)	(2011 norms)	(2005 norms)	(2005 norms)	(2011 norms)	(2005 norms)	(2005 norms)	(2011 norms)	(2005 norms)	(2005 norms)	(2011 norms)
Abbotts Hill	84	81	76	87	92	86	83	85	76	84	85	80
Alpharetta	72	78	73	84	86	78	87	80	71	84	84	79
Amana	61	67	60	68	69	59	73	67	56	70	71	65
Barnwell	80	77	71	85	84	76	80	78	69	84	83	78
Bethune	37	29	24	40	38	32	54	35	26	40	35	34
Birmingham Falls	73	79	74	83	86	80	79	80	71	80	86	81
Brookview	26	33	28	31	43	37	41	42	32	33	39	38
Campbell	37	38	32	44	56	47	52	47	35	47	46	43
Chattahoochee Hills	54			58			68			71		
Cliftondale	55	49	42	52	67	56	61	56	43	55	57	52
Cogburn Woods	78	77	72	86	86	78	80	84	75	84	85	80
College Park	25	28	23	30	46	39	39	35	25	35	37	36
Conley Hills	34	34	29	42	43	37	49	44	33	42	45	43
Crabapple Crossing	82	87	83	89	92	86	91	90	82	86	88	84
Creek View	81	77	72	86	88	81	87	80	71	84	83	77
Dolvin	81	85	81	87	93	87	82	86	78	87	88	84
Dunwoody Springs	44	62	55	54	70	61	66	65	55	62	68	62
Feldwood	30	39	33	35	50	41	46	45	33	37	42	39
Findley Oaks	88	84	80	92	91	85	90	86	78	89	90	85
Gullatt	24	37	31	27	41	35	39	45	34	34	47	43
Hapeville	42	35	29	46	44	38	58	47	34	54	52	47
Heards Ferry	83	83	79	91	92	87	93	88	81	88	91	87
Hembree Springs	68	66	59	78	78	69	76	74	65	76	77	71
Heritage	27	26	21	37	39	33	38	31	22	35	34	33
Hilliard	26	28	23	31	33	27	40	30	21	34	35	34
High Point	68	61	54	78	73	63	77	70	60	80	70	65
Hillside	44	64	57	60	76	67	65	72	62	60	71	66
Holmes	28	30	24	34	46	39	44	38	28	40	42	39
Ison Springs	49	39	33	51	59	48	56	49	36	57	50	47
Jackson	46	52	45	48	62	52	59	60	48	53	62	57
Lake Forest	29	32	26	36	48	40	38	38	28	39	36	35
Lake Windward	84	86	82	92	94	89	88	89	81	88	87	83
Seaborn Lee	35	38	32	39	54	45	55	47	35	49	51	48
Lewis	43	40	33	47	49	41	52	48	36	51	53	49

	Total English Language Arts			Total Math			Social Studies			Science		
	Crosswalk*		New Baseline	Crosswalk*		New Baseline	Crosswalk*		New Baseline	Crosswalk*		New Baseline
	2015 (2005 norms)	2016 (2005 norms)	2016 (2011 norms)	2015 (2005 norms)	2016 (2005 norms)	2016 (2011 norms)	2015 (2005 norms)	2016 (2005 norms)	2016 (2011 norms)	2015 (2005 norms)	2016 (2005 norms)	2016 (2011 norms)
Liberty Point	34	44	38	38	61	52	51	54	41	45	52	48
Main Street	44	59	52	56	62	53	69	66	55	68	67	62
Manning Oaks	58	69	63	74	80	71	72	72	62	75	77	72
Medlock Bridge	81	74	69	87	81	73	84	76	68	85	78	72
Mimosa	26	30	25	41	46	38	45	39	30	37	38	36
Mountain Park	85	86	82	83	91	86	82	85	76	83	86	81
New Prospect	73	76	71	89	90	83	84	83	74	84	82	77
Nolan	27	30	26	36	44	36	48	41	30	41	40	38
Northwood	62	76	72	78	86	79	77	83	74	73	84	79
Oakley	30	40	33	40	56	46	46	53	40	43	48	43
Ocee	79	81	76	81	87	80	79	80	72	80	85	80
Palmetto	34	31	26	47	48	40	53	38	28	47	42	39
Parklane	29	26	20	40	38	31	40	32	23	36	34	33
Randolph	48	46	39	54	59	49	62	54	41	58	55	51
Renaissance	37	40	33	44	53	43	56	48	36	42	45	43
River Eves	63	69	63	76	82	74	73	73	64	73	80	74
Roswell North	73	75	69	75	82	74	79	79	70	79	81	76
Shakerag	87	89	86	92	96	91	88	91	83	88	88	84
Spalding Drive	67	77	72	83	90	83	79	80	71	79	85	81
State Bridge Xing	69	82	78	86	91	85	85	86	77	85	89	85
Stonewall Tell	54	58	51	58	68	58	68	69	60	59	72	67
Summitt Hill	83	82	78	87	89	81	86	86	77	86	86	81
Sweet Apple	74	81	77	86	89	81	85	82	73	84	86	81
Vickery Mill		36	31		45	38		48	35		53	49
Evoline West	42	46	40	48	60	50	55	53	39	52	53	49
Wilson Creek	87	80	76	92	88	80	87	82	72	87	87	83
Wolf Creek		52	45		61	53		62	51		62	57
Woodland	65	57	49	71	74	64	76	67	57	75	71	66
County (FULTON)	58	61	54	68	74	64	69	67	56	68	68	59
National Average	50	50	50	50	50	50	50	50	50	50	50	50

\*In the fall of 2016, Fulton County updated the norm referenced test from Form A ITBS to the Form E Iowa Assessment. Form E is a different test that contains content that is more relevant to our current population and is more aligned with our current standards. The norm group for Form E is from 2011 while the norm group from our previous test is from 2005. The Iowa and the ITBS with different norms cannot be directly compared. 2016 scores will become baseline data for trend purposes. For 2016 a "cross-walk" will be used for comparison. The "cross-walk" puts the 2016 scores into the 2005 norm group so that they can be compared to 2015 results. This "cross-walk" will allow system and school level comparisons but it should not be used for accountability purposes. In 2017, scores will be presented for 2016 and 2017 with 2011 norms.

**FULTON COUNTY SCHOOLS**  
**Fall 2016 - Iowa Assessment**  
**Grade 5 - Mean National Percentile**

	Total English Language Arts			Total Math			Social Studies			Science		
		<i>Crosswalk*</i>	<i>New Baseline</i>		<i>Crosswalk*</i>	<i>New Baseline</i>		<i>Crosswalk*</i>	<i>New Baseline</i>		<i>Crosswalk*</i>	<i>New Baseline</i>
	2015 (2005 norms)	2016 (2005 norms)	2016 (2011 norms)	2015 (2005 norms)	2016 (2005 norms)	2016 (2011 norms)	2015 (2005 norms)	2016 (2005 norms)	2016 (2011 norms)	2015 (2005 norms)	2016 (2005 norms)	2016 (2011 norms)
Abbotts Hill	81	82	78	83	86	76	82	81	80	82	84	79
Alpharetta	77	87	83	79	90	83	83	78	78	85	82	75
Amana	63	57	53	52	56	43	70	55	56	68	60	53
Barnwell	77	83	79	82	87	78	82	80	80	81	82	76
Bethune	32	27	26	36	36	28	40	34	36	39	36	32
Birmingham Falls	71	78	74	79	83	74	81	79	79	81	80	74
Brookview	32	27	27	30	34	27	38	24	26	40	33	29
Campbell	37	36	34	33	45	35	46	37	39	44	45	39
Chattahoochee Hills	58			53			70			71		
Cliftondale	52	42	40	50	56	43	58	50	52	54	54	47
Cogburn Woods	75	79	75	80	89	81	83	81	81	81	83	77
College Park	30	24	23	23	36	28	35	27	30	35	30	27
Conley Hills	42	29	29	28	40	31	41	36	37	42	39	34
Crabapple Crossing	81	89	85	86	90	82	87	85	84	85	85	79
Creek View	78	83	79	85	89	81	82	80	80	82	84	78
Dolvin	86	84	80	88	89	81	86	81	81	87	81	75
Dunwoody Springs	50	56	53	42	63	50	57	59	60	57	66	60
Feldwood	38	30	28	37	37	29	46	37	39	47	41	36
Findley Oaks	89	90	87	92	92	85	90	88	87	89	88	83
Gullatt	25	25	24	25	30	22	27	28	31	27	36	31
Hapeville	34	27	26	28	35	27	37	28	30	34	36	32
Heards Ferry	89	88	84	92	90	82	89	89	88	90	86	81
Hembree Springs	84	74	70	83	81	71	83	73	73	84	73	67
Heritage	25	21	21	25	32	25	25	29	31	30	32	29
High Point	64	59	56	69	70	59	74	65	65	76	65	59
Hilliard	45	28	27	32	30	22	39	34	36	38	35	31
Hillside	55	67	63	52	73	61	65	74	74	64	70	63
Holmes	26	26	25	24	34	26	30	29	31	30	35	31
Ison Springs	40	42	40	36	54	41	58	53	55	57	55	48
Jackson	45	39	37	43	45	34	57	47	49	57	47	41
Lake Forest	28	28	26	34	37	29	36	32	34	37	35	31
Lake Windward	84	88	84	91	95	89	88	88	87	86	88	82
Seaborn Lee	37	38	37	40	52	41	46	44	46	43	52	45
Lewis	50	29	28	38	45	35	47	34	36	48	38	34

	Total English Language Arts			Total Math			Social Studies			Science		
	Crosswalk*		New Baseline	Crosswalk*		New Baseline	Crosswalk*		New Baseline	Crosswalk*		New Baseline
	2015 (2005 norms)	2016 (2005 norms)	2016 (2011 norms)	2015 (2005 norms)	2016 (2005 norms)	2016 (2011 norms)	2015 (2005 norms)	2016 (2005 norms)	2016 (2011 norms)	2015 (2005 norms)	2016 (2005 norms)	2016 (2011 norms)
Liberty Point	48	39	37	39	50	38	47	43	45	49	49	43
Main Street	60	45	43	51	60	47	69	61	62	60	58	52
Manning Oaks	64	60	56	64	66	54	68	64	64	69	68	61
Medlock Bridge	79	83	79	86	91	83	82	81	81	83	84	77
Mimosa	32	28	27	40	47	36	40	38	41	40	38	33
Mountain Park	83	82	78	83	86	77	84	80	80	81	79	73
New Prospect	78	72	68	83	84	75	82	76	76	83	78	72
Nolan	31	22	22	31	37	29	38	30	32	38	35	31
Northwood	69	79	75	78	83	72	80	80	80	81	83	77
Oakley	47	30	29	38	37	29	50	38	39	49	37	32
Ocee	79	78	74	86	82	72	87	78	78	86	78	72
Palmetto	40	28	27	35	39	31	46	34	36	46	40	35
Parklane	24	28	27	25	37	29	31	34	36	33	35	31
Randolph	45	40	38	37	48	37	51	39	40	53	49	42
Renaissance	47	39	37	45	49	37	51	45	46	49	49	43
River Eves	71	79	75	68	78	68	77	75	75	74	78	71
Roswell North	71	73	68	70	74	63	74	68	68	76	74	68
Shakerag	81	86	83	88	92	84	83	84	84	85	82	77
Spalding Drive	70	70	66	77	79	69	80	71	71	79	73	67
State Bridge Xing	79	78	74	87	83	74	87	80	79	87	79	73
Stonewall Tell	56	51	47	57	63	51	61	58	59	59	63	57
Summitt Hill	77	84	80	81	87	78	85	83	82	83	84	78
Sweet Apple	86	83	79	90	88	79	91	81	80	87	83	77
Vickery Mill		36	35		57	44		43	44		51	44
Evoline West	49	40	38	53	49	38	62	49	51	60	53	46
Wilson Creek	84	89	85	88	94	87	84	88	87	85	87	82
Wolf Creek		43	41		60	47		53	54		60	54
Woodland	54	55	52	49	65	53	62	62	63	60	69	63
County (FULTON)	63	59	56	65	70	59	69	64	64	69	67	60
National Average	50	50	50	50	50	50	50	50	50	50	50	50

\*In the fall of 2016, Fulton County updated the norm referenced test from Form A ITBS to the Form E Iowa Assessment.

Form E is a different test that contains content that is more relevant to our current population and is more aligned with our current standards.

The norm group for Form E is from 2011 while the norm group from our previous test is from 2005.

The Iowa and the ITBS with different norms cannot be directly compared.

2016 scores will become baseline data for trend purposes. For 2016 a "cross-walk" will be used for comparison.

The "cross-walk" puts the 2016 scores into the 2005 norm group so that they can be compared to 2015 results.

This "cross-walk" will allow system and school level comparisons but it should not be used for accountability purposes.

In 2017, scores will be presented for 2016 and 2017 with 2011 norms.

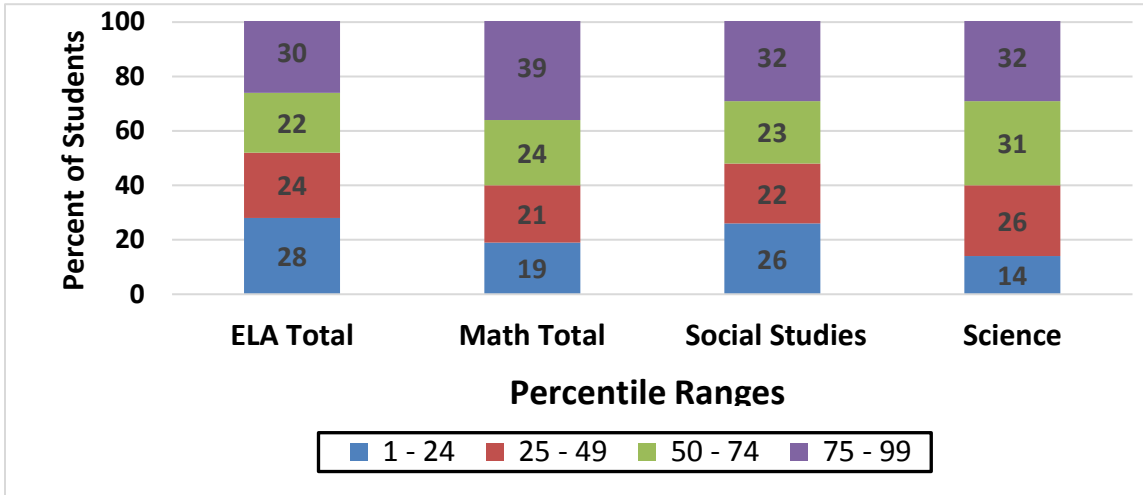
**FULTON COUNTY SCHOOLS**  
**Fall 2016 - Iowa Assessment**  
**Grade 8 - Mean National Percentile**

	Total English Language Arts			Total Math			Social Studies			Science		
		<i>Crosswalk*</i>	<i>New Baseline</i>		<i>Crosswalk*</i>	<i>New Baseline</i>		<i>Crosswalk*</i>	<i>New Baseline</i>		<i>Crosswalk*</i>	<i>New Baseline</i>
	2015 (2005 norms)	2016 (2005 norms)	2016 (2011 norms)	2015 (2005 norms)	2016 (2005 norms)	2016 (2011 norms)	2015 (2005 norms)	2016 (2005 norms)	2016 (2011 norms)	2015 (2005 norms)	2016 (2005 norms)	2016 (2011 norms)
Amana	64	57	59	59	63	60	67	57	63	75	65	65
Autrey Mill	72	79	79	80	86	83	74	72	77	81	80	80
Bear Creek	35	26	28	33	37	34	34	29	35	39	37	36
Camp Creek	35	32	34	28	40	37	32	35	41	39	38	37
Crabapple	73	68	70	75	76	73	75	70	75	80	73	73
Elkins Pointe	61	58	60	64	62	59	62	58	63	72	62	62
Hapeville Charter	44	30	32	39	41	38	39	35	41	46	30	30
Haynes Bridge	61	62	64	64	69	66	63	62	67	69	62	62
Holcomb Bridge	59	44	46	58	54	51	59	50	56	73	61	60
Hopewell	71	73	74	78	81	77	74	69	74	78	75	75
Main Street	38	44	47	40	43	40	48	45	51	44	45	44
McNair	31	24	26	24	25	23	30	27	33	35	33	33
Northwestern	73	78	79	74	82	78	76	72	76	80	77	77
Renaissance MS	38	32	35	32	40	38	37	34	40	45	40	39
Ridgeview	57	52	54	57	58	55	62	51	57	68	58	57
River Trail	81	86	87	89	93	91	79	79	83	83	85	84
Sandtown	47	38	40	40	45	42	50	42	48	57	45	44
Sandy Springs	48	52	54	44	55	52	50	50	56	59	61	60
Taylor Road	73	83	83	76	86	83	75	74	78	78	79	78
Webb Bridge	80	81	82	84	89	87	79	77	81	84	84	84
Paul D. West	32	22	24	31	29	27	32	27	33	38	32	32
Woodland	33	21	23	27	27	25	32	26	32	39	33	32
County (FULTON)	59	57	59	60	65	62	60	56	61	67	63	62
National Average	50	50	50	50	50	50	50	50	50	50	50	50

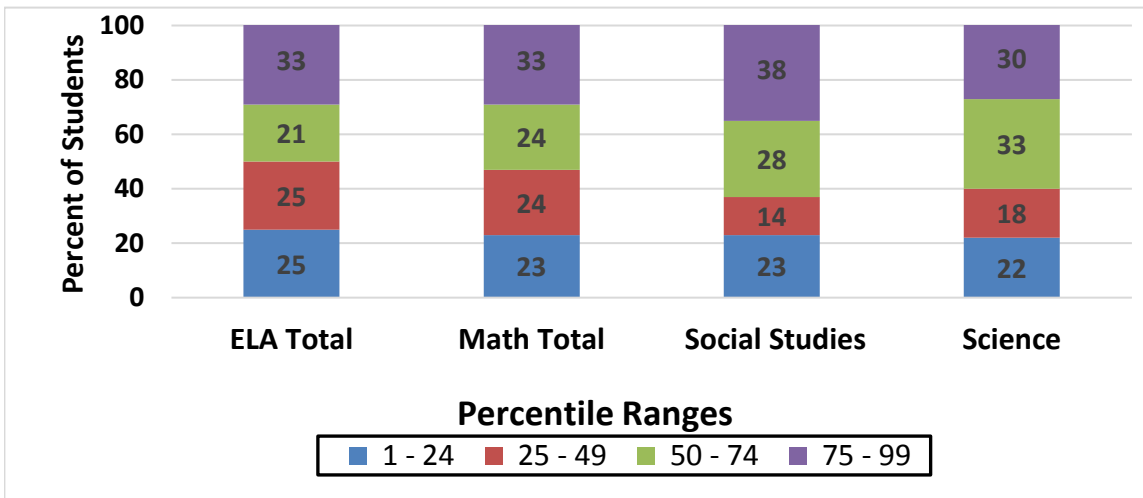
\*In the fall of 2016, Fulton County updated the norm referenced test from Form A ITBS to the Form E Iowa Assessment. Form E is a different test that contains content that is more relevant to our current population and is more aligned with our current standards. The norm group for Form E is from 2011 while the norm group from our previous test is from 2005. The Iowa and the ITBS with different norms cannot be directly compared. 2016 scores will become baseline data for trend purposes. For 2016 a "cross-walk" will be used for comparison. The "cross-walk" puts the 2016 scores into the 2005 norm group so that they can be compared to 2015 results. This "cross-walk" will allow system and school level comparisons but it should not be used for accountability purposes. In 2017, scores will be presented for 2016 and 2017 with 2011 norms.

**Fulton County Schools  
Iowa Assessment  
Percent of Students by Percentile Range**

**Grade 3**



**Grade 5**



**Grade 8**

