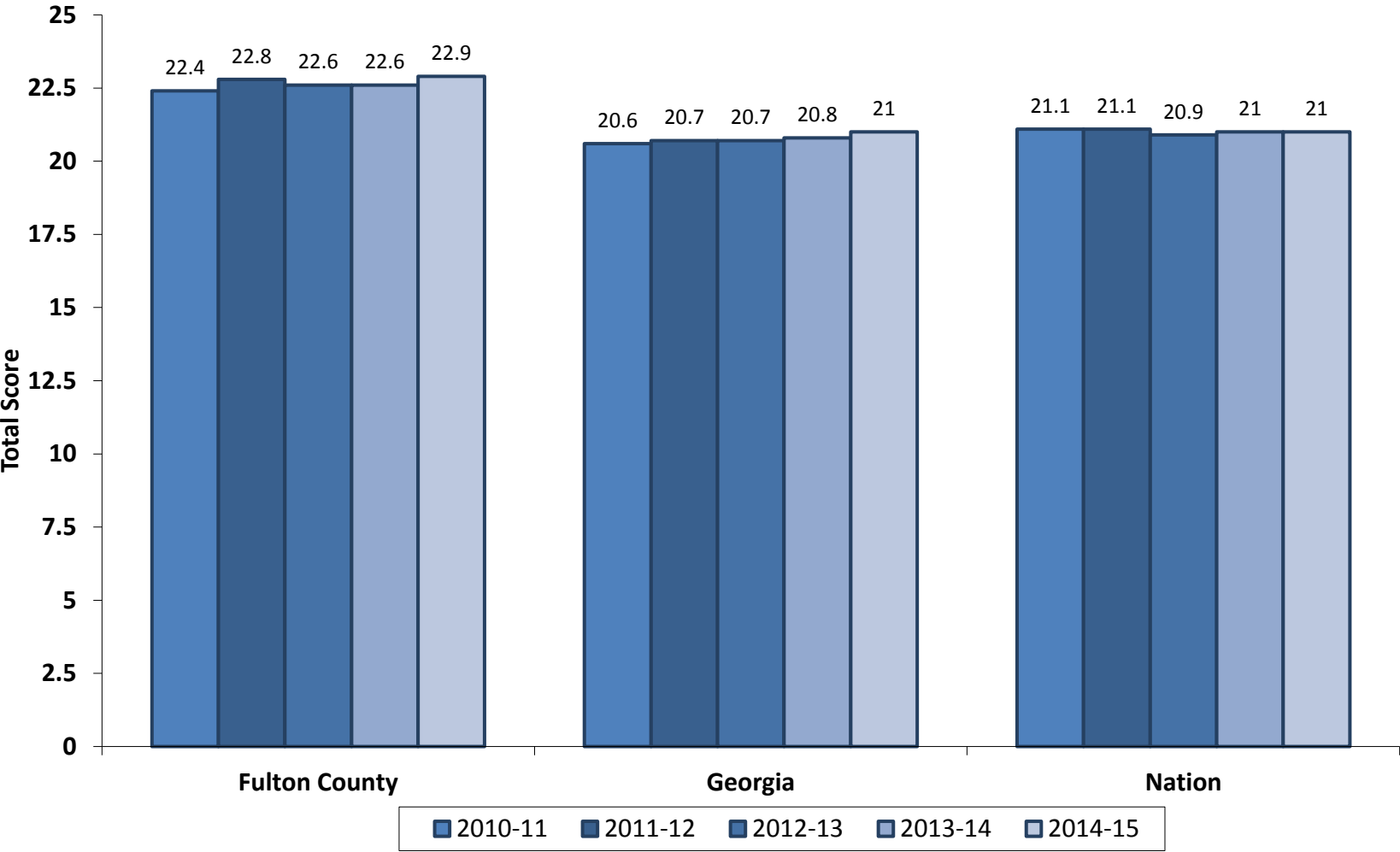
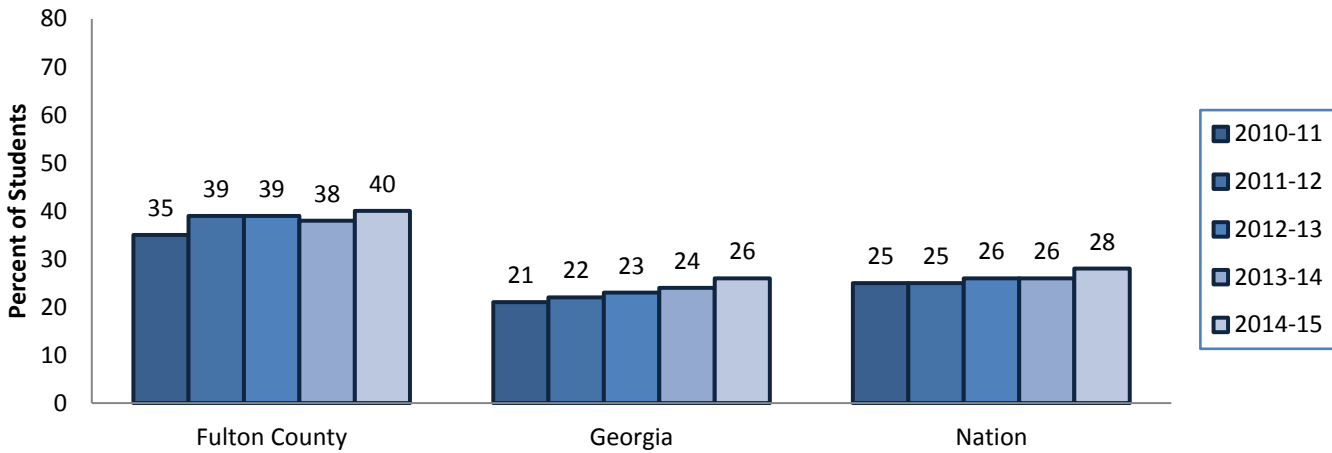


Fulton County Five Year Comparison Composite ACT Scores

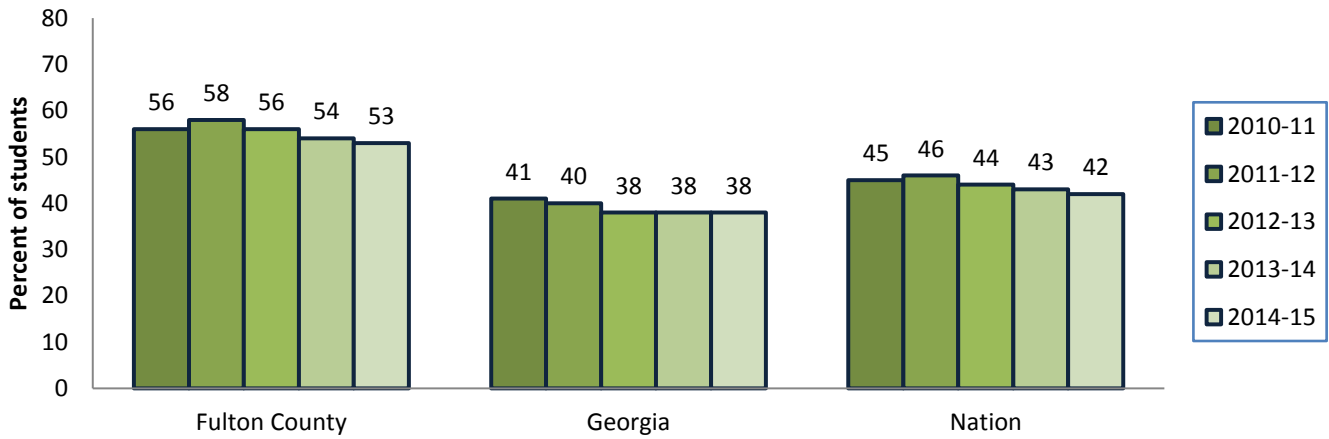


Fulton County Schools ACT College Readiness Benchmarks

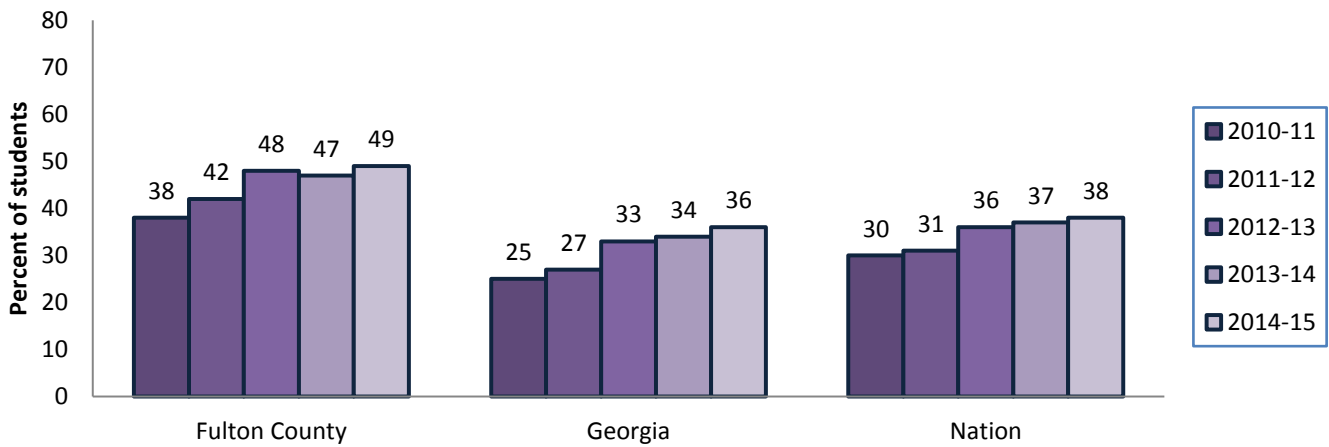
Percent Meeting All Four Benchmarks



Percent Meeting Mathematics Benchmark

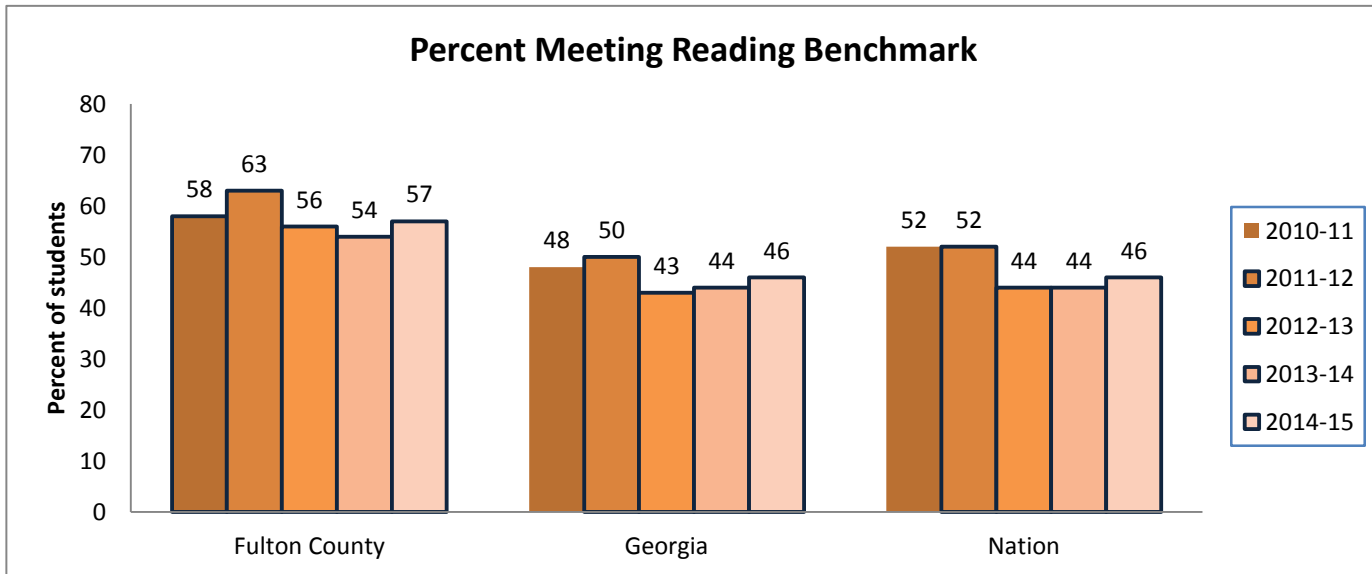
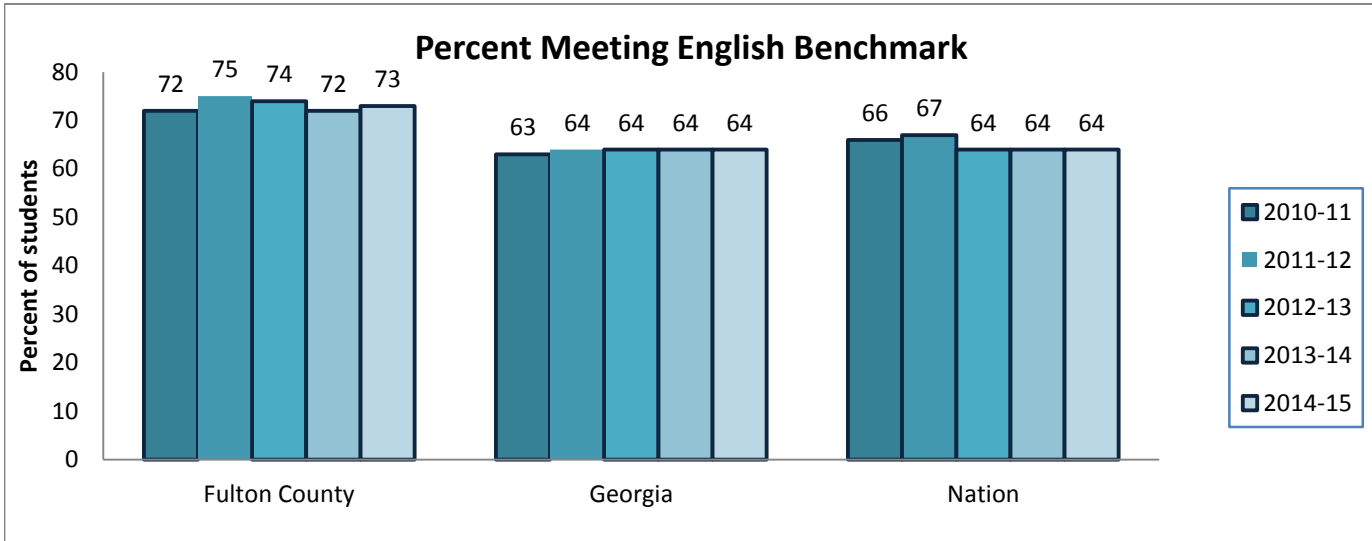


Percent Meeting Science Benchmark



A benchmark score is the minimum score needed on an ACT subject-area test to indicate a 50% chance of obtaining a "B" or higher or about a 75% chance of obtaining a "C" or higher in the corresponding credit-bearing college course.

Fulton County Schools ACT College Readiness Benchmarks



A benchmark score is the minimum score needed on an ACT subject-area test to indicate a 50% chance of obtaining a "B" or higher or about a 75% chance of obtaining a "C" or higher in the corresponding credit-bearing college course.

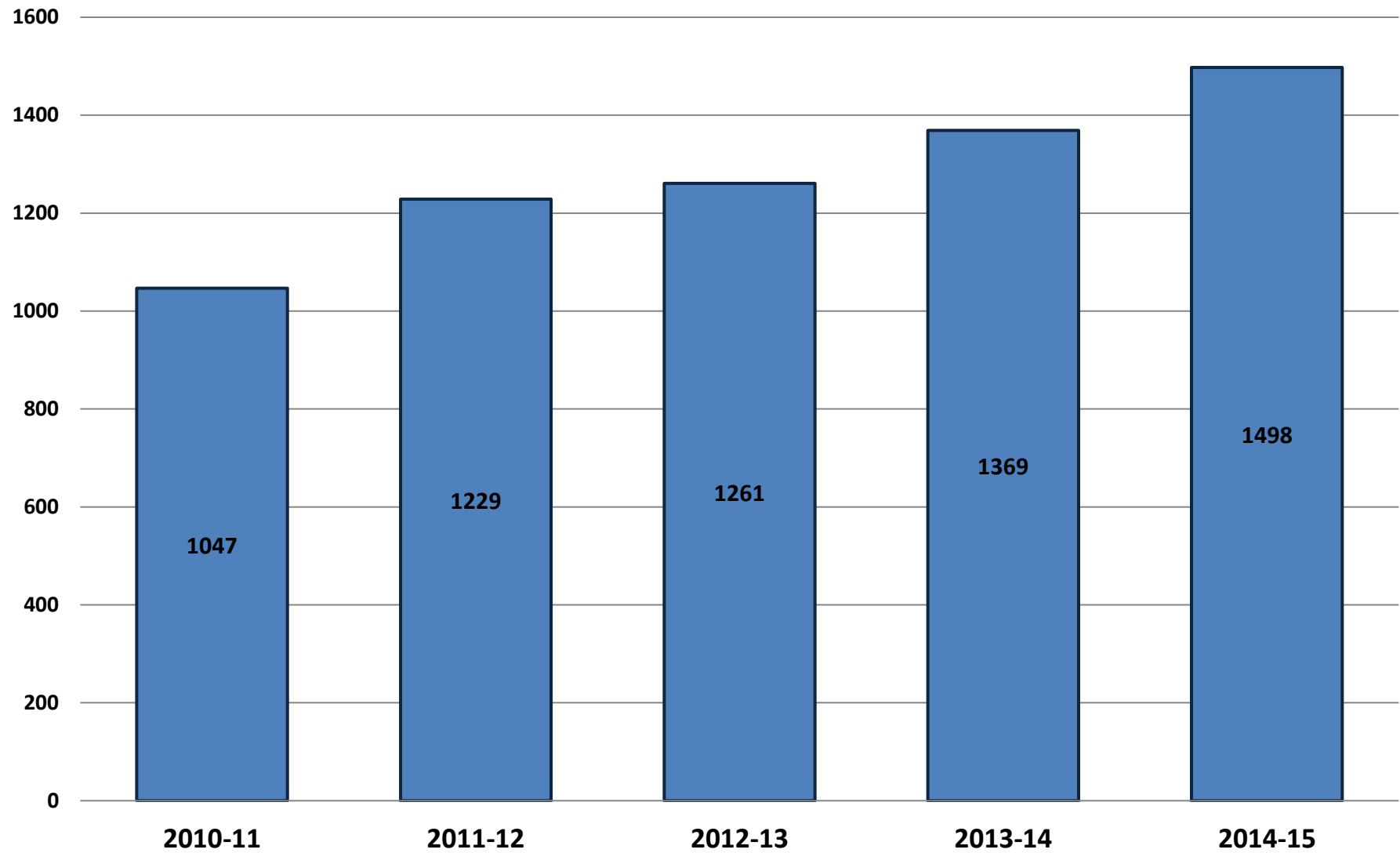
**Fulton County Schools
ACT
Three Year Comparison**

	2013						2014						2015					
	N	Eng	Math	Reading	Science	Com- posite	N	Eng	Math	Reading	Science	Com- posite	N	Eng	Math	Reading	Science	Com- posite
Alpharetta	320	24.7	24.9	24.9	24.2	24.8	350	25.6	25.5	25.8	24.8	25.6	370	25.3	24.9	25.2	24.8	25.2
Banneker	105	15.5	16.8	16.9	16.3	16.5	139	15.2	16.5	17.0	16.3	16.4	114	15.3	16.5	17.0	17.2	16.6
Cambridge	41	22.3	21.8	23.6	22.8	22.8	121	23.0	23.3	23.6	23.2	23.4	201	23.7	23.6	24.3	23.5	23.8
Centennial	202	23.5	23.4	24.0	23.4	23.7	211	23.4	22.8	23.6	23.2	23.4	225	22.9	22.5	23.7	23.1	23.2
Chattahoochee	218	24.7	25.2	24.9	24.4	24.9	270	24.8	25.2	24.8	24.6	25.0	284	25.1	25.2	25.6	24.9	25.3
Creekside	109	15.6	16.8	16.6	16.6	16.5	126	15.9	17.1	17.4	17.2	17.1	119	16.2	16.8	17.2	16.7	16.8
Fulton Science	18	22.0	23.2	22.5	22.0	22.5	17	22.9	26.5	23.6	22.8	24.2	15	24.9	24.7	25.5	24.3	25.1
Hapeville Caree	59	15.8	16.3	16.6	16.3	16.4	70	15.6	16.2	16.6	16.3	16.3	80	15.3	16.1	17.0	16.5	16.3
Independence	9						20	16.6	17.7	19.3	19.0	18.3	20	19.2	18.6	19.5	19.0	19.1
Johns Creek	309	25.4	25.7	25.4	24.8	25.5	304	25.4	25.5	24.8	24.7	25.2	361	25.7	25.0	25.7	25.1	25.5
Langston Hughes	179	15.7	17.1	17.3	16.7	16.9	209	15.6	16.7	17.7	16.9	16.9	178	15.2	16.8	16.9	16.6	16.5
McClarín	6						23	12.3	14.7	14.0	14.2	14.0	7					
Milton	395	25.0	25.2	25.5	24.5	25.2	362	24.9	25.1	25.6	24.5	25.1	333	25.8	24.8	25.9	25.1	25.5
Northview	234	25.6	26.6	25.7	25.0	25.9	282	26.5	27.1	26.2	25.8	26.5	308	26.1	26.9	26.0	26.0	26.4
North Springs	132	23.3	22.4	24.5	22.9	23.3	147	22.4	21.2	23.1	22.2	22.4	182	21.3	20.5	22.0	21.5	21.4
Riverwood	200	22.9	22.3	23.6	22.3	22.9	224	23.4	22.2	24.0	22.6	23.2	209	23.8	22.9	24.2	23.1	23.7
Roswell	281	24.5	24.5	24.6	24.0	24.5	305	24.7	24.8	24.7	24.2	24.7	318	25.0	25.0	25.4	24.4	25.1
Tri-Cities	201	15.6	16.7	17.3	16.9	16.8	199	15.4	16.7	16.9	17.2	16.6	225	15.8	16.7	17.8	17.0	16.9
Westlake	214	17.7	18.5	19.5	18.4	18.6	223	17.4	18.1	18.8	17.9	18.2	195	17.8	17.8	19.2	18.4	18.4

Total Fulton	3,233	22.2	22.6	22.9	22.1	22.6	3,602	22.2	22.5	22.8	22.2	22.6	3,744	22.6	22.6	23.2	22.6	22.9
Georgia	48,505	20.2	20.3	21.2	20.5	20.7	50,697	20.3	20.5	21.4	20.7	20.8	54,653	20.6	20.5	21.6	20.9	21.0
National	1,799,243	20.2	20.9	21.1	20.7	20.9	1,845,787	20.3	20.9	21.3	20.8	21.0	1,924,436	20.4	20.8	21.4	20.9	21.0

Fulton County Schools

Number of Students Meeting or Exceeding Benchmark in All Four Areas



Fulton County Schools

ACT Test Participation - 5 Year Trend

