

WOODLAND MIDDLE SCHOOL STUDENT BEHAVIOR RE-NORM MEETING

Mission Statement: To promote growth in all students through academic excellence and social responsibility



Discipline Support Administrator
6th Clare



Discipline Support Administrator
7th Dunlap



Discipline Support Administrator
8th Anderson

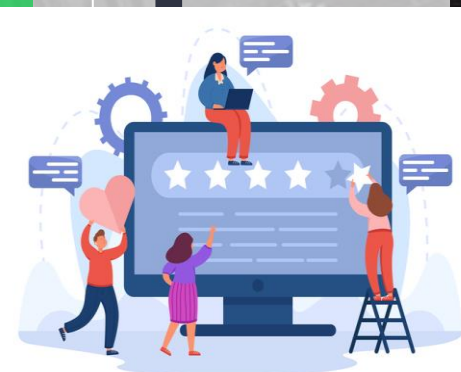
AGENDA

- Meaning of School Learning
- Goals & Rewards
- What Impedes on Our Learning Goal (Discipline Data)
- WMS Glows & Grows
- 30 Day Focus
- WMS Student Behavior Compact

What's the Meaning of School?

Here at **Woodland Middle** School, we consider school to be an institution for.....

- Academic Achievement
- Social & Emotional Learning
- Public Recognition
- Community Involvement



School Goals

- ✓ Excel in each class with a grade higher than a 75
- ✓ Building life-long relationships
- ✓ Join academic, sports and/or activity clubs
- ✓ Pass the GMAS with a level 3 or higher (Proficient)

WHEN WE MEET GOALS

1. PBIS POINTS/PBIS PARTY
2. SCHOOL FIELD DAY/FIELD TRIPS
3. SCHOOLWIDE CELEBRATIONS (DANCES)
4. PARTICIPATE & ATTEND EXTRACURRICULAR ACTIVITIES (SPORTS)



STUDENT
CLUBS AND
ORGANIZATIONS



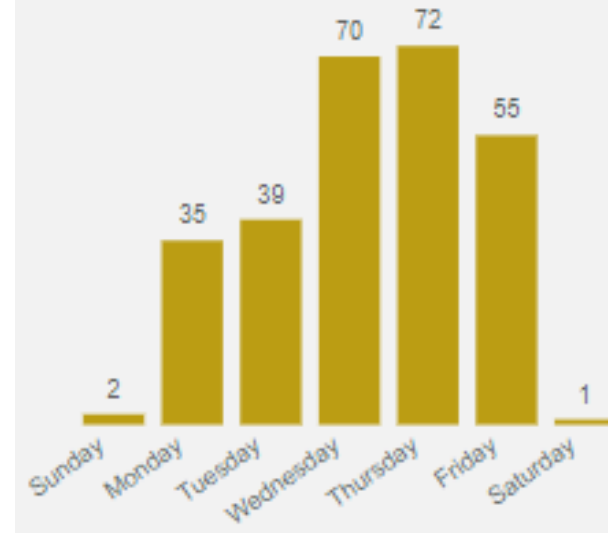
WHAT DOES THE DATA SAY

HOW CAN WE CONTINUE LEARNING?

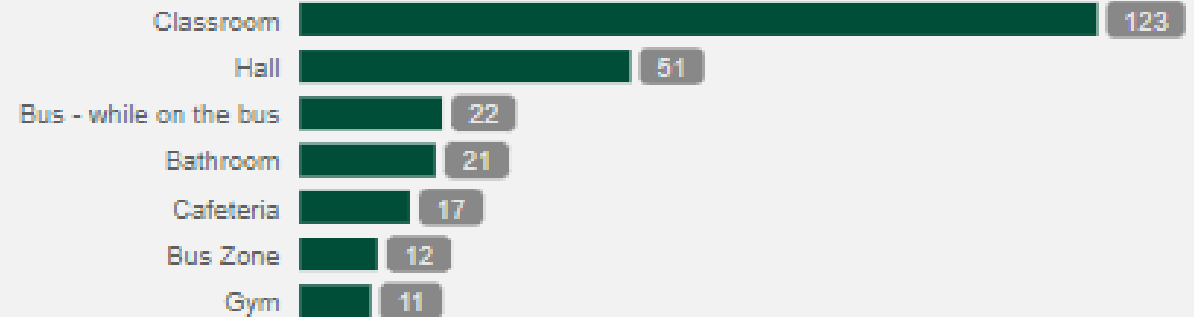
- Students are making a lot of bad decisions on Wednesday and Thursday.
- Majority of our discipline concerns are happening inside the classroom.

DISCIPLINE DATA

Total # of Discipline Incidents by Day



Total Number of Discipline Incidents by Location



WMS STUDENT GLOWS & GROWS

WHAT WE ARE DOING WELL AT	WHAT WE NEED TO IMPROVE ON
ATTENDANCE- COMING TO SCHOOL	TARDINESS- ARRIVING LATE
MORNING ARRIVAL	TRANSITIONS/WALKING ORDERLY
COMPLETING INSTRUCTIONAL WORK	IMPROVE ASSESSMENTS-FAILURES
EXCELLENT FIELDTRIP BEHAVIOR	VULGAR/ABUSIVE LANGUAGE
	FIGHTING

MAJOR DISCIPLINE RULES THAT WERE NOT MET 1ST SEMESTER:

1. FCS- Rule 5. (Physical) Fight- Mutually participate or initiate a physical altercation (Fight). Intentionally make physical contact with any person to include horse playing.
2. FCS- Rule 12. Attendance/Transitions- "Skipping" or missing (being late) any class or activity or any portion of a class or activity, without a valid pass from a teacher/administer.
excuse
3. FCS- Rule 6. Failure to Follow Rules/Profanity Towards employee- Not following directions of the teacher or school rules and using profanity/verbal abuse of an employee, staff, or visitor

WMS 30 DAY BEHAVIORAL FOCUS



January Grade Level Competition

Grade	Grow/ School-wide Discipline Target	Contest Rules	Reward & Celebration Date
6 th Grade	Decrease ISS/OSS days (Student Centered)	-No discipline incidents and must have at least a 75 in classes -Teacher will recommend at least one student from each class and the names will be entered into a raffle (30 students will participate)	1st Friday in February (Pizza Party with Dean/AP) during connections
7 th Grade	Focus will be on attendance and grades (Student Centered)	Students will be rewarded admission to the grade level celebration if they pass all their classes with an average of 80% and substantial attendance (90% attendance rate, 0 tardy infractions, and 0 skipping infractions)	January 20 th Pizza Party Lunch & Chat with the AP/Dean
8 th Grade	Student: Sense of Urgency Transitions	Students: Students timeliness will be monitored for getting to class on time	Students: tba student vote



TO: PARENT/GUARDIAN AND STUDENT

[_____] will begin this contract on this date January 4th 2022 to help in assuring his/her success

*All Woodland MS students are expected to follow the FCS Code of Conduct and Woodland MS school-wide expectations which includes but not limited to the following:

GOALS FOR SCHOOL:

1. All students will follow all school rules and behavior expectations at [Woodland Middle] School
2. We will create a safe learning environment with little to no distractions.
3. We will promote growth in all students through academic excellence and social responsibility.

REWARDS IF GOALS ARE MET:

1. PBIS Points /PBIS Party
2. School Field Day & Trips
3. Schoolwide Celebrations & Grade Level Initiatives (Monthly)
4. Participate & Attend Extracurricular Activities (Sports & Clubs)

MAJOR DISCIPLINE RULES THAT WERE NOT MET 1ST SEMESTER:

1. FCS- Rule 5. (Physical) Fight- Mutually participate or initiate a physical altercation (Fight). Intentionally make physical contact with any person to include horse playing.
2. FCS- Rule 12. Attendance Transitions- "Skipping" or missing (being late) any class or activity or any portion of a class or activity, without a valid pass from a teacher/administer. excuse
3. FCS- Rule 6. Failure to Follow Rules/Profanity Towards employees- Not following directions of the teacher or school rules and using profanity/verbal abuse of an employee, staff, or visitor

CONSEQUENCES IF GOALS ARE NOT MET:

1. Parent Contact & Suspension (in school or out of school suspension)
2. Parent Contact & Expulsion (a long term or permanent removal of a student from his/her regular educational setting)
3. Parent Contact & Criminal Charges by the School Resource Police Officer

The rewards and consequences mentioned above are null and void if student committed an act that would require a suspension and/or expulsion. This will be determined by school policy and the school administration.

By signing this compact you agree that it has been reviewed by you and your teacher and will follow accordingly

WMS STUDENT BEHAVIOR COMPACT
Sign your name at the bottom to indicate that we went over the goals, rewards, discipline rules and consequences for school.

1. AFTER SIGNING PLEASE HAND TO YOUR TEACHER TO GET 20 PBIS POINTS
2. TEACHERS PLEASE PLACE CONTRACTS BACK IN YOUR FOLDER AND HAND OFF TO YOUR HALL SUPPORT.



THANK YOU

Get caught doing great things !!!!!