

# 2000-2001 Georgia Public Education Report Card

## Fulton County

### Woodland Middle School - 6600289

Grade Range - 6-8

The Georgia Public Education Report Card is designed to assist systems and schools in educational improvement. This report card contains a variety of data elements. An explanation of the terms is provided as a companion to the report card data. Please refer to the definitions for the most effective use of the reported data.

#### STUDENT DATA

##### Total Enrollment, by Race/Ethnicity and Gender

Total		Black	White	Hispanic	Asian	American Indian	Multi-Racial	Male	Female
6-8:	1,205	943	65	150	31	1	15	636	569
		78.3%	5.4%	12.4%	2.6%	0.1%	1.2%	52.8%	47.2%

##### Enrollment in Selected Programs

Program	Program Enrollment	% of Student Population
Gifted (Grades K-12)	33	2.7%
Vocational Labs (Grades 9-12)	0	0.0%
Alternative Programs (Grades K-12)	12	1.0%

##### Enrollment in Compensatory Programs

Program	Program Enrollment	% of Student Population
Special Education (Grades K-12)	190	15.8%
(PK)	0	N/A
English to Speakers of Other Languages (ESOL) (Grades K-12)	79	6.6%
Title I (Grades K-12)	This School has a Schoolwide Title I Program.	

##### Students Eligible to Receive Free/Reduced-price Lunches

	Number	Percent
School	982	81.5%
System	21,659	31.6%

##### Dropout Rate for Grades 6-8

	Number	Percent
School	4	0.3%
System	44	0.2%

##### Retained Students, by Race/Ethnicity and Gender

Total	Black	White	Hispanic	Asian	American Indian	Multi-Racial	Male	Female
39	16	5	18	0	0	0	23	16
	41.0%	12.8%	46.2%	0.0%	0.0%	0.0%	59.0%	41.0%

# 2000-2001 Georgia Public Education Report Card

## Fulton County

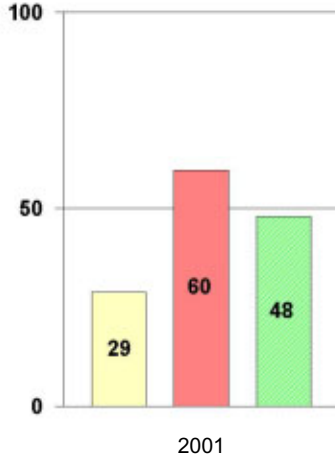
### Woodland Middle School

#### NORM-REFERENCED ASSESSMENTS

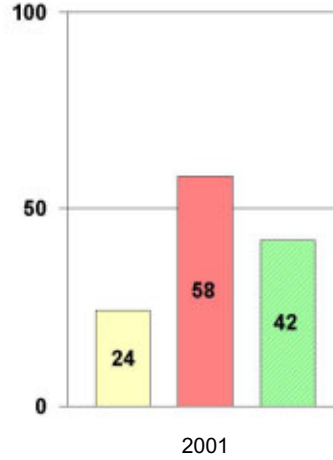
##### Stanford 9 Tests, Grade 8

Each chart reflects data for one year of testing.

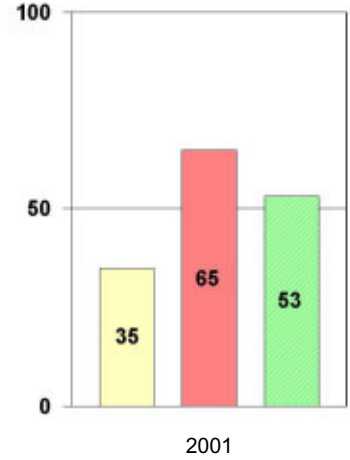
###### Total Reading



###### Total Mathematics



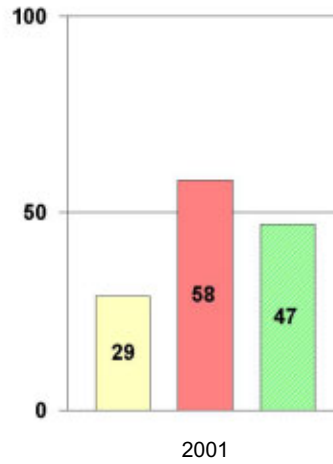
###### Language



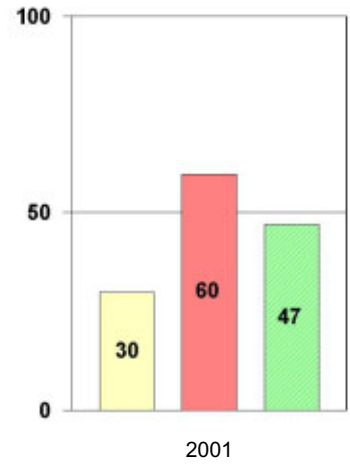
###### Science



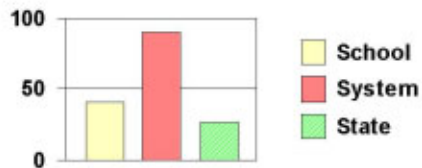
###### Social Science



###### Complete Battery



#### Legend



# 2000-2001 Georgia Public Education Report Card

## Fulton County

### Woodland Middle School

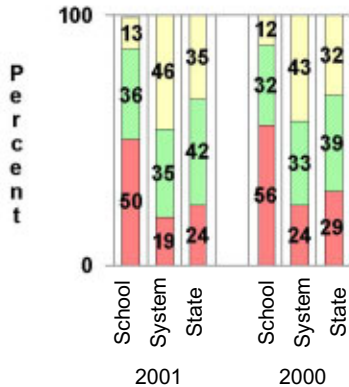
#### CRITERION-REFERENCED ASSESSMENTS

#### Criterion-Referenced Competency Tests (CRCTs)

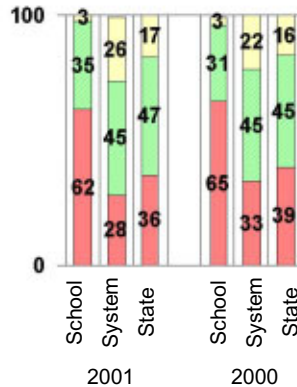
Percentage of Students Scoring in the Indicated Achievement Levels

Each chart reflects data for two years of testing.

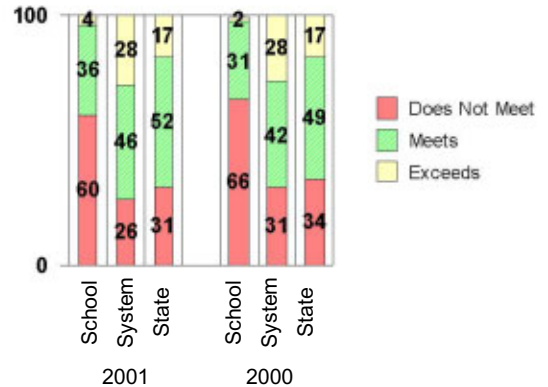
**Grade 6 Reading**



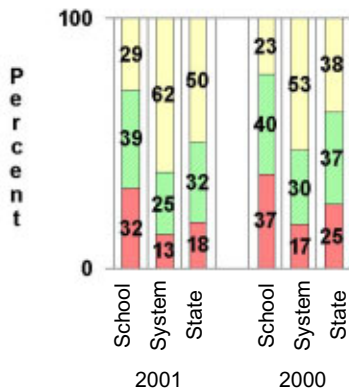
**Grade 6 Language Arts**



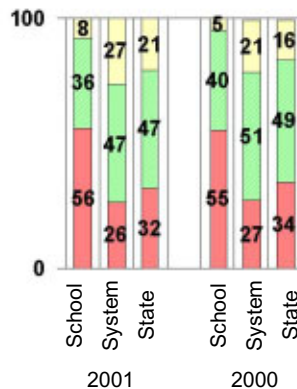
**Grade 6 Mathematics**



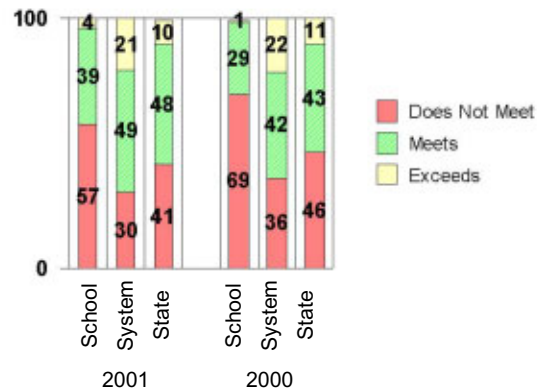
**Grade 8 Reading**



**Grade 8 Language Arts**



**Grade 8 Mathematics**



#### PERFORMANCE ASSESSMENTS

#### Grade 8 Writing Assessment

		2000-2001			1999-2000		
		School	System	State	School	System	State
Categories of Scaled Scores:							
Not on Target	(300-348)	30%	12%	17%	46%	19%	28%
On Target	(349-367)	65%	67%	72%	48%	59%	58%
Exceeds Target	(368-400)	5%	20%	12%	6%	22%	13%
Average Scaled Score: (Range 300-400)		351	360	357	349	359	354

# 2000-2001 Georgia Public Education Report Card

## Fulton County

### Woodland Middle School

#### CERTIFIED PERSONNEL DATA

		Administrators	Support Personnel	PK-12 Teachers
Positions	Number	3.88	9.94	86.48
	Average Contract Days	228.67	198.50	190.17
Personnel	Full-time	3	7	86
	Part-time	15	15	1
Gender	Male	9	6	26
	Female	9	16	61
Certificate Level	4 Yr Bachelor's	8	6	47
	5 Yr Master's	7	11	32
	6 Yr Specialist's	2	5	6
	7 Yr Doctoral	1	0	2
	Other *	0	0	0
Years Experience	<1	0	2	13
	1-10	5	7	39
	11-20	10	6	22
	21-30	3	6	13
	>30	0	1	0
	Average	14.56	13.82	9.94

\* Includes One- and Two-Year Vocational Certificates.

#### ACCREDITATION DATA

Accredited by Southern Association of Colleges and Schools (SACS):  
Elementary/Middle Commission

#### AWARDS/RECOGNITION DATA

Schools in Georgia may receive recognition in the following programs:

- Charter School
- Pay for Performance Program
- Georgia School of Excellence
- National Blue Ribbon School

Woodland Middle School did not receive recognition in any of these programs during the 2000-2001 school year.

For more information about these programs, contact your school principal or the school system central office.