

2000-2001 Georgia Public Education Report Card

Fulton County

Woodland Elementary School - 6601070

Grade Range - PK-5

The Georgia Public Education Report Card is designed to assist systems and schools in educational improvement. This report card contains a variety of data elements. An explanation of the terms is provided as a companion to the report card data. Please refer to the definitions for the most effective use of the reported data.

STUDENT DATA

Total Enrollment, by Race/Ethnicity and Gender

Total		Black	White	Hispanic	Asian	American Indian	Multi-Racial	Male	Female
K-5:	539	200 37.1%	191 35.4%	79 14.7%	32 5.9%	0 0.0%	37 6.9%	285 52.9%	254 47.1%
PK:	33	10 30.3%	17 51.5%	4 12.1%	2 6.1%	0 0.0%	0 0.0%	20 60.6%	13 39.4%

Enrollment in Selected Programs

Program	Program Enrollment	% of Student Population
Gifted (Grades K-12)	31	5.8%
Alternative Programs (Grades K-12)	0	0.0%

Enrollment in Compensatory Programs

Program	Program Enrollment	% of Student Population
Special Education (Grades K-12) (PK)	103 17	19.1% N/A
English to Speakers of Other Languages (ESOL) (Grades K-12)	50	9.3%
Early Intervention Program (EIP) (Grades K-3)	78	21.2%
Remedial Education (Grades 4-5, 9-12)	26	15.2%
Title I (Grades K-12)	This School has no Title I Program.	

Students Eligible to Receive Free/Reduced-price Lunches

	Number	Percent
School	165	28.8%
System	21,659	31.6%

Dropout Rate *

	Number	Percent
School	N/A	N/A
System	N/A	N/A

* - Dropouts are not reported for grades PK-5.

Retained Students, by Race/Ethnicity and Gender

Total	Black	White	Hispanic	Asian	American Indian	Multi-Racial	Male	Female
8	3 37.5%	2 25.0%	0 0.0%	2 25.0%	0 0.0%	1 12.5%	4 50.0%	4 50.0%

2000-2001 Georgia Public Education Report Card

Fulton County

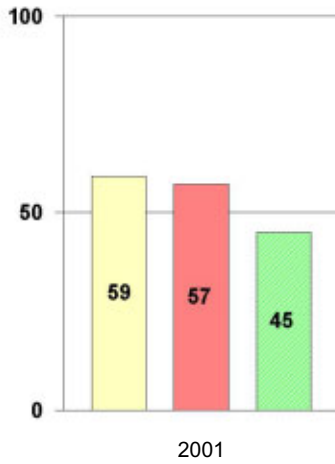
Woodland Elementary School

NORM-REFERENCED ASSESSMENTS

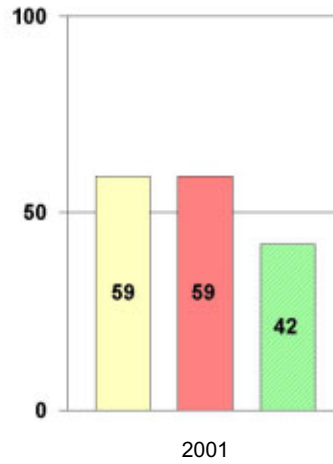
Stanford 9 Tests, Grade 3

Each chart reflects data for one year of testing.

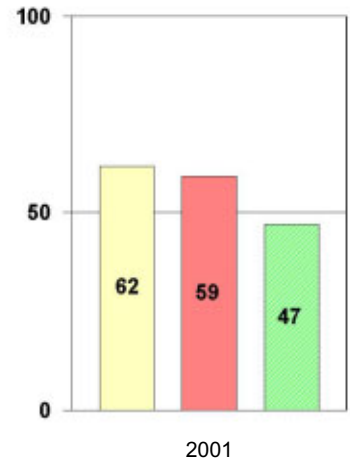
Total Reading



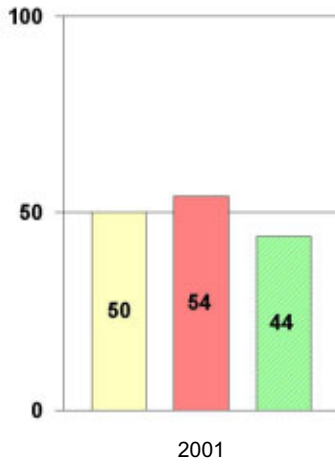
Total Mathematics



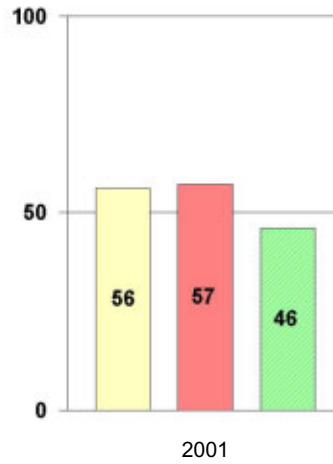
Language



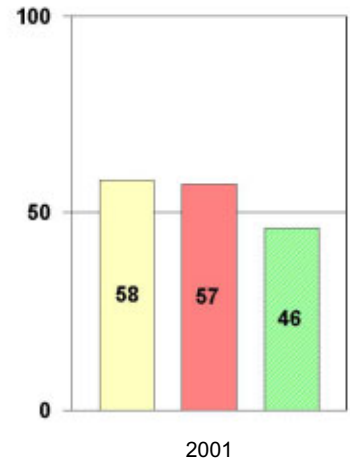
Science



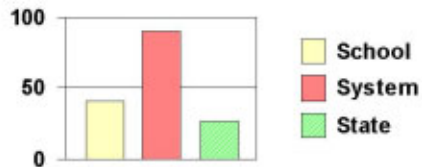
Social Science



Complete Battery



Legend



2000-2001 Georgia Public Education Report Card

Fulton County

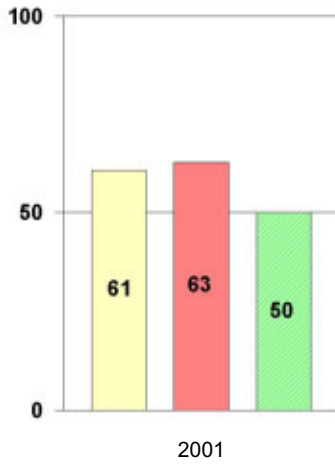
Woodland Elementary School

NORM-REFERENCED ASSESSMENTS

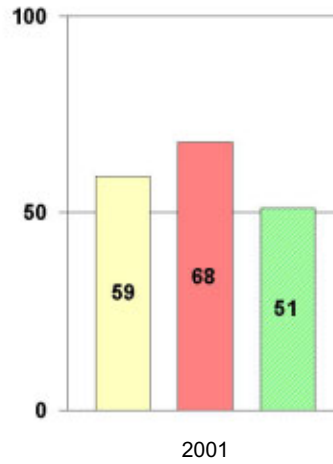
Stanford 9 Tests, Grade 5

Each chart reflects data for one year of testing.

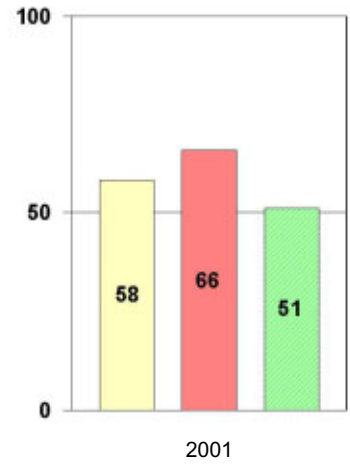
Total Reading



Total Mathematics



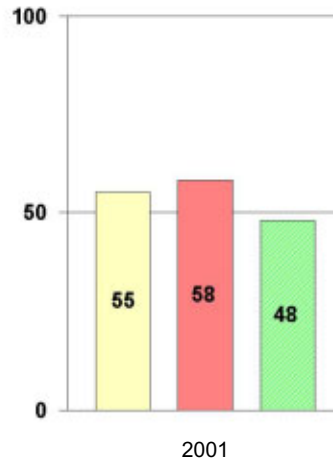
Language



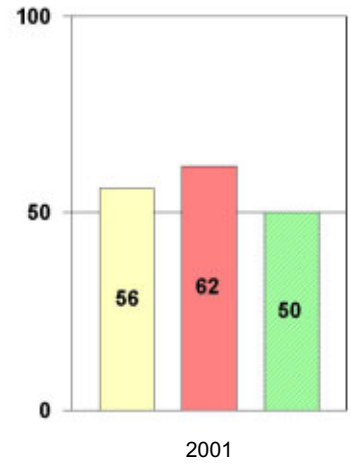
Science



Social Science



Complete Battery



Legend



2000-2001 Georgia Public Education Report Card

Fulton County

Woodland Elementary School

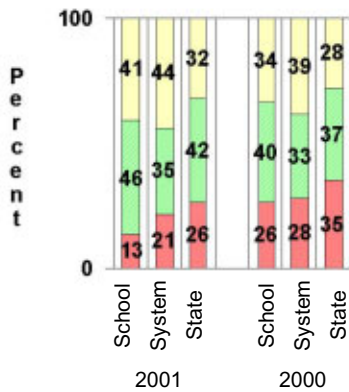
CRITERION-REFERENCED ASSESSMENTS

Criterion-Referenced Competency Tests (CRCTs)

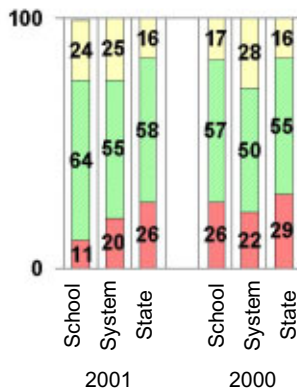
Percentage of Students Scoring in the Indicated Achievement Levels

Each chart reflects data for two years of testing.

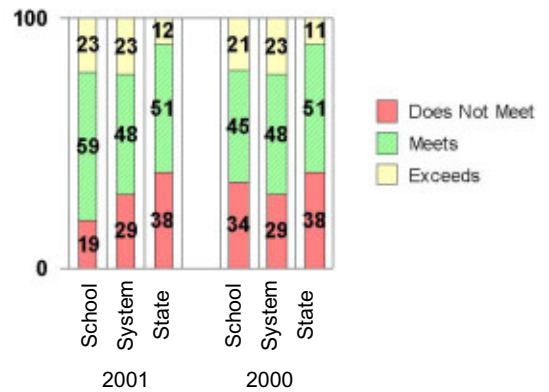
Grade 4 Reading



Grade 4 Language Arts



Grade 4 Mathematics



PERFORMANCE ASSESSMENTS

Grade 5 Writing Assessment

Percent at Developmental Stages:	2000-2001			1999-2000			1998-99		
	School	System	State	School	System	State	School	System	State
Stage 1: The Emerging Writer	0%	1%	1%	1%	1%	1%	0%	0%	1%
Stage 2: The Developing Writer	4%	2%	2%	2%	3%	2%	1%	2%	2%
Stage 3: The Focusing Writer	14%	14%	17%	12%	16%	19%	15%	14%	19%
Stage 4: The Experimenting Writer	42%	34%	42%	33%	38%	41%	27%	35%	41%
Stage 5: The Engaging Writer	35%	32%	29%	37%	29%	27%	30%	31%	27%
Stage 6: The Extending Writer	6%	17%	9%	15%	14%	9%	26%	18%	11%

2000-2001 Georgia Public Education Report Card

Fulton County

Woodland Elementary School

CERTIFIED PERSONNEL DATA

		Administrators	Support Personnel	PK-12 Teachers
Positions	Number	2.25	8.00	49.84
	Average Contract Days	234.53	193.00	190.30
Personnel	Full-time	2	6	46
	Part-time	7	3	12
Gender	Male	1	0	4
	Female	8	9	54
Certificate Level	4 Yr Bachelor's	3	1	30
	5 Yr Master's	3	6	20
	6 Yr Specialist's	3	2	8
	7 Yr Doctoral	0	0	0
	Other *	0	0	0
Years Experience	<1	0	3	4
	1-10	5	3	34
	11-20	0	1	10
	21-30	3	2	9
	>30	1	0	1
	Average	16.11	9.33	10.17

* Includes One- and Two-Year Vocational Certificates.

ACCREDITATION DATA

Accredited by Southern Association of Colleges and Schools (SACS):
Elementary/Middle Commission

AWARDS/RECOGNITION DATA

Schools that become Charter Schools have a unique opportunity to rethink how they structure and deliver education programs for improving the learning of their students while being freed from the state laws, State Board of Education rules and regulations, and local board of education rules and regulations that govern other schools. A 'charter' is a binding contract that, when approved by the faculty and parents of the school, the local board of education, and the State Board of Education, substitutes for state education statutes, state and local rules, policies, regulations, and standards.

Woodland Elementary School is a Charter School for 2000-2001.