

2000-2001 Georgia Public Education Report Card

Fulton County

Webb Bridge Middle School - 6600497

Grade Range - 6-8

The Georgia Public Education Report Card is designed to assist systems and schools in educational improvement. This report card contains a variety of data elements. An explanation of the terms is provided as a companion to the report card data. Please refer to the definitions for the most effective use of the reported data.

STUDENT DATA

Total Enrollment, by Race/Ethnicity and Gender

Total		Black	White	Hispanic	Asian	American Indian	Multi-Racial	Male	Female
6-8:	1,921	128	1,471	40	240	1	41	1,015	906
		6.7%	76.6%	2.1%	12.5%	0.1%	2.1%	52.8%	47.2%

Enrollment in Selected Programs

Program	Program Enrollment	% of Student Population
Gifted (Grades K-12)	703	36.6%
Vocational Labs (Grades 9-12)	0	0.0%
Alternative Programs (Grades K-12)	0	0.0%

Enrollment in Compensatory Programs

Program	Program Enrollment	% of Student Population
Special Education (Grades K-12) (PK)	154 0	8.0% N/A
English to Speakers of Other Languages (ESOL) (Grades K-12)	0	0.0%
Title I (Grades K-12)	This School has no Title I Program.	

Students Eligible to Receive Free/Reduced-price Lunches

	Number	Percent
School	29	1.5%
System	21,659	31.6%

Dropout Rate for Grades 6-8

	Number	Percent
School	0	0.0%
System	44	0.2%

Retained Students, by Race/Ethnicity and Gender

Total	Black	White	Hispanic	Asian	American Indian	Multi-Racial	Male	Female
12	1	9	0	1	0	1	6	6
	8.3%	75.0%	0.0%	8.3%	0.0%	8.3%	50.0%	50.0%

2000-2001 Georgia Public Education Report Card

Fulton County

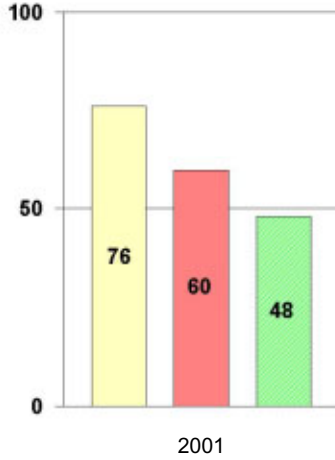
Webb Bridge Middle School

NORM-REFERENCED ASSESSMENTS

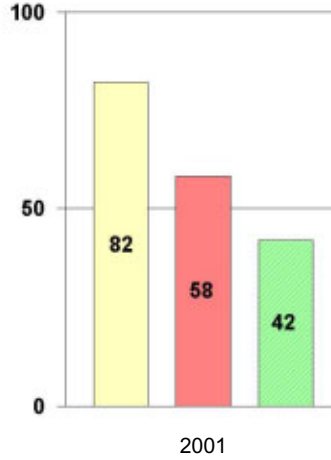
Stanford 9 Tests, Grade 8

Each chart reflects data for one year of testing.

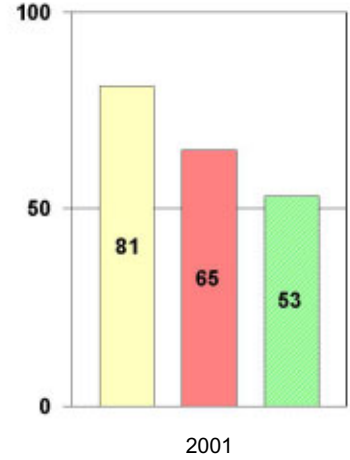
Total Reading



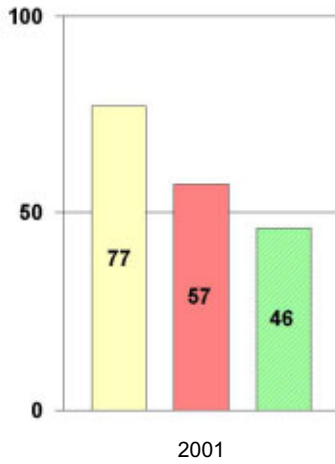
Total Mathematics



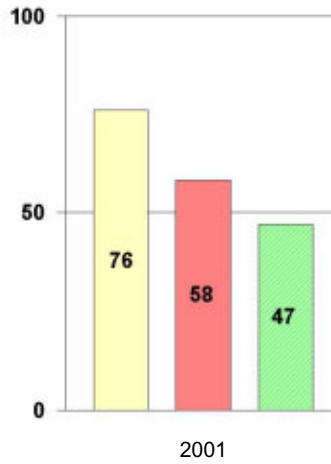
Language



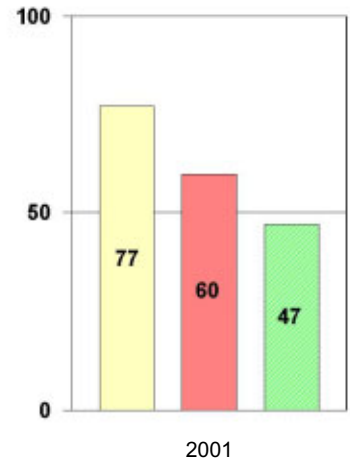
Science



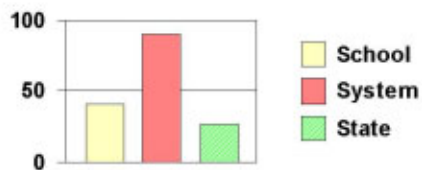
Social Science



Complete Battery



Legend



2000-2001 Georgia Public Education Report Card

Fulton County

Webb Bridge Middle School

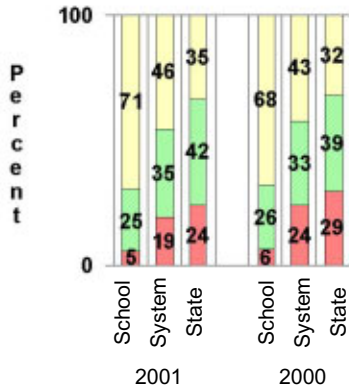
CRITERION-REFERENCED ASSESSMENTS

Criterion-Referenced Competency Tests (CRCTs)

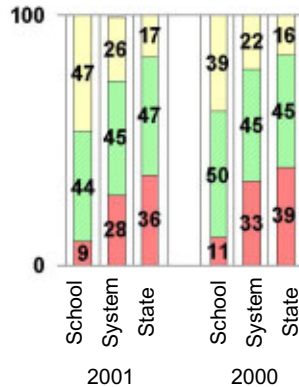
Percentage of Students Scoring in the Indicated Achievement Levels

Each chart reflects data for two years of testing.

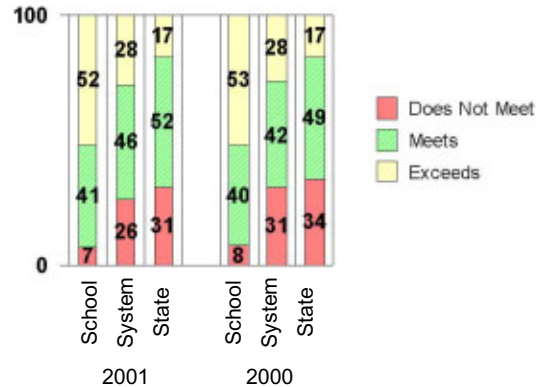
Grade 6 Reading



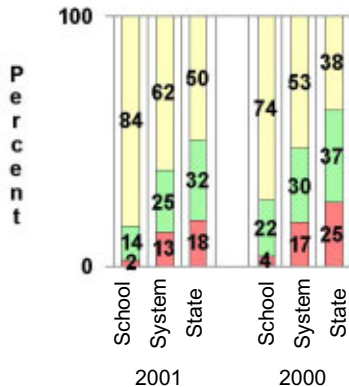
Grade 6 Language Arts



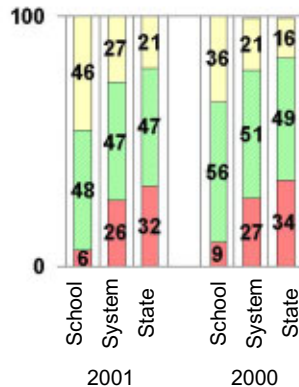
Grade 6 Mathematics



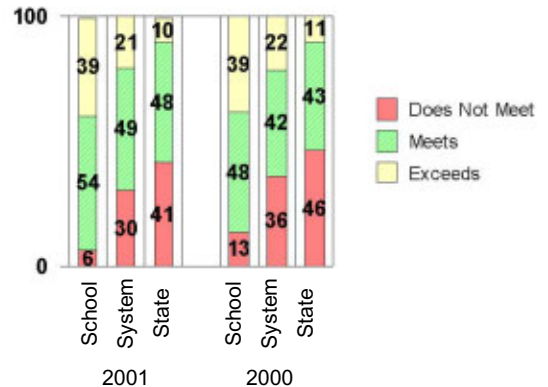
Grade 8 Reading



Grade 8 Language Arts



Grade 8 Mathematics



PERFORMANCE ASSESSMENTS

Grade 8 Writing Assessment

		2000-2001			1999-2000		
Categories of Scaled Scores:		School	System	State	School	System	State
Not on Target	(300-348)	3%	12%	17%	9%	19%	28%
On Target	(349-367)	58%	67%	72%	63%	59%	58%
Exceeds Target	(368-400)	39%	20%	12%	28%	22%	13%
Average Scaled Score: (Range 300-400)		366	360	357	362	359	354

2000-2001 Georgia Public Education Report Card

Fulton County

Webb Bridge Middle School

CERTIFIED PERSONNEL DATA

		Administrators	Support Personnel	PK-12 Teachers
Positions	Number	6.01	9.79	113.19
	Average Contract Days	231.58	197.82	190.00
Personnel	Full-time	5	8	112
	Part-time	17	13	2
Gender	Male	3	4	17
	Female	19	17	97
Certificate Level	4 Yr Bachelor's	3	6	66
	5 Yr Master's	13	11	40
	6 Yr Specialist's	4	3	7
	7 Yr Doctoral	2	1	1
	Other *	0	0	0
Years Experience	<1	0	0	10
	1-10	9	12	67
	11-20	8	6	27
	21-30	5	3	10
	>30	0	0	0
	Average	14.18	11.19	8.21

* Includes One- and Two-Year Vocational Certificates.

ACCREDITATION DATA

Accredited by Southern Association of Colleges and Schools (SACS):
Elementary/Middle Commission

AWARDS/RECOGNITION DATA

Through the Pay for Performance Program, exemplary public schools and schools making outstanding progress toward becoming exemplary may be rewarded. Not a merit pay program, the Pay for Performance Program motivates and rewards entire school faculties for working together to make their schools exemplary. A school selected for participation in the program has one school year to attain at least 80% of its previously-approved performance objectives in order to receive an award based on \$2,000 per certified faculty member.

Webb Bridge Middle School was a Pay for Performance recipient for the 2000-2001 cycle.