

2000-2001 Georgia Public Education Report Card

Fulton County

Taylor Road Middle School - 6600591

Grade Range - 6-8

The Georgia Public Education Report Card is designed to assist systems and schools in educational improvement. This report card contains a variety of data elements. An explanation of the terms is provided as a companion to the report card data. Please refer to the definitions for the most effective use of the reported data.

STUDENT DATA

Total Enrollment, by Race/Ethnicity and Gender

Total		Black	White	Hispanic	Asian	American Indian	Multi-Racial	Male	Female
6-8:	1,689	134	1,172	58	280	0	45	859	830
		7.9%	69.4%	3.4%	16.6%	0.0%	2.7%	50.9%	49.1%

Enrollment in Selected Programs

Program	Program Enrollment	% of Student Population
Gifted (Grades K-12)	494	29.2%
Vocational Labs (Grades 9-12)	0	0.0%
Alternative Programs (Grades K-12)	0	0.0%

Enrollment in Compensatory Programs

Program	Program Enrollment	% of Student Population
Special Education (Grades K-12) (PK)	132 0	7.8% N/A
English to Speakers of Other Languages (ESOL) (Grades K-12)	83	4.9%
Title I (Grades K-12) This School has no Title I Program.		

Students Eligible to Receive Free/Reduced-price Lunches

	Number	Percent
School	50	3.0%
System	21,659	31.6%

Dropout Rate for Grades 6-8

	Number	Percent
School	0	0.0%
System	44	0.2%

Retained Students, by Race/Ethnicity and Gender

Total	Black	White	Hispanic	Asian	American Indian	Multi-Racial	Male	Female
3	2	0	1	0	0	0	3	0
	66.7%	0.0%	33.3%	0.0%	0.0%	0.0%	100.0%	0.0%

2000-2001 Georgia Public Education Report Card

Fulton County

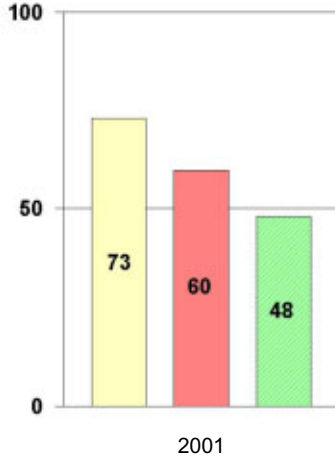
Taylor Road Middle School

NORM-REFERENCED ASSESSMENTS

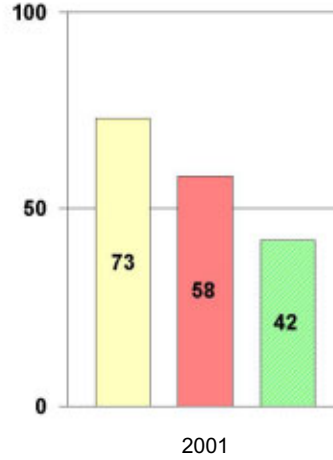
Stanford 9 Tests, Grade 8

Each chart reflects data for one year of testing.

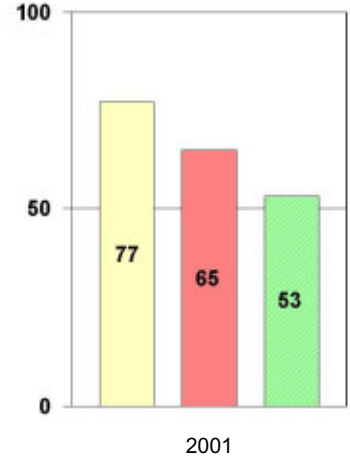
Total Reading



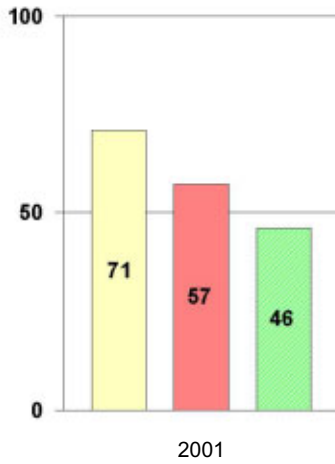
Total Mathematics



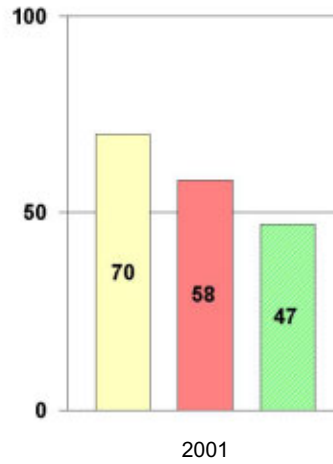
Language



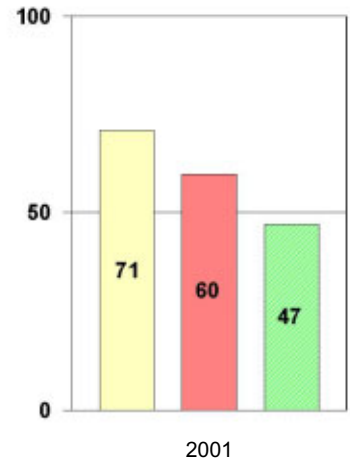
Science



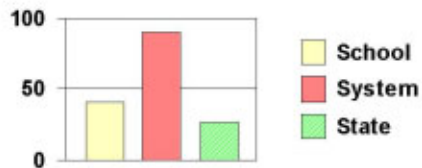
Social Science



Complete Battery



Legend



2000-2001 Georgia Public Education Report Card

Fulton County

Taylor Road Middle School

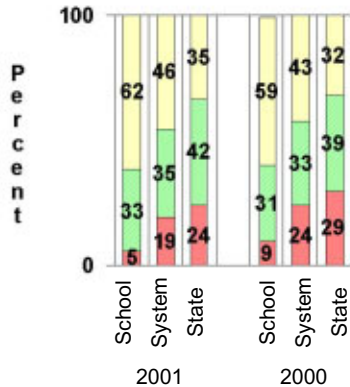
CRITERION-REFERENCED ASSESSMENTS

Criterion-Referenced Competency Tests (CRCTs)

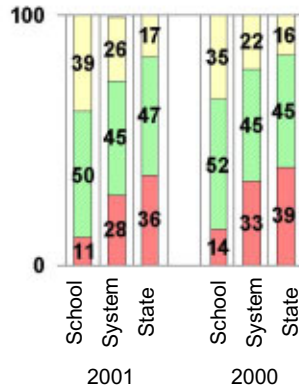
Percentage of Students Scoring in the Indicated Achievement Levels

Each chart reflects data for two years of testing.

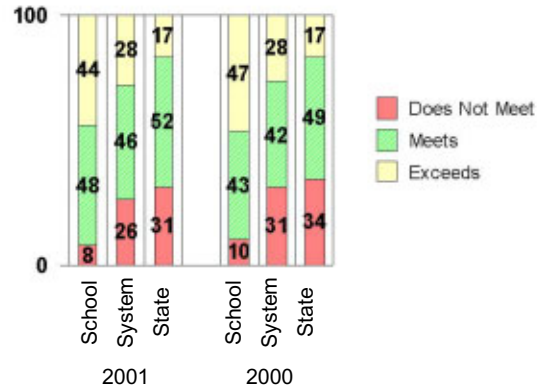
Grade 6 Reading



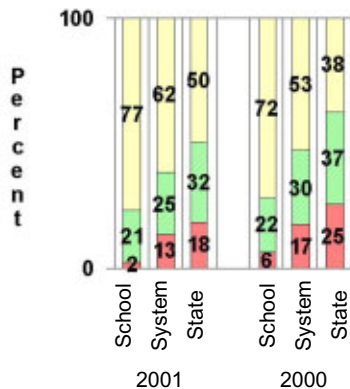
Grade 6 Language Arts



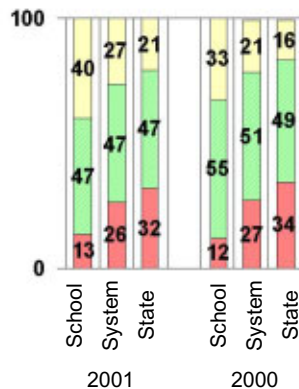
Grade 6 Mathematics



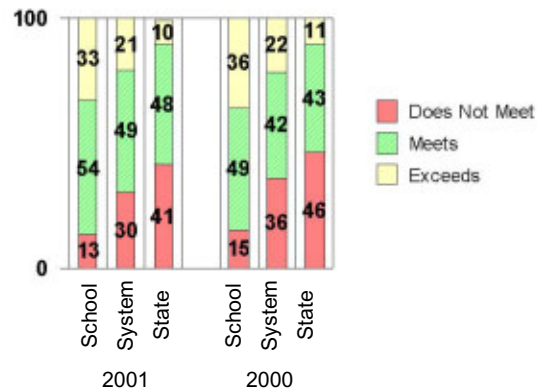
Grade 8 Reading



Grade 8 Language Arts



Grade 8 Mathematics



PERFORMANCE ASSESSMENTS

Grade 8 Writing Assessment

		2000-2001			1999-2000		
Categories of Scaled Scores:		School	System	State	School	System	State
Not on Target	(300-348)	8%	12%	17%	6%	19%	28%
On Target	(349-367)	68%	67%	72%	60%	59%	58%
Exceeds Target	(368-400)	24%	20%	12%	34%	22%	13%
Average Scaled Score: (Range 300-400)		362	360	357	364	359	354

2000-2001 Georgia Public Education Report Card

Fulton County

Taylor Road Middle School

CERTIFIED PERSONNEL DATA

		Administrators	Support Personnel	PK-12 Teachers
Positions	Number	5.88	9.99	103.98
	Average Contract Days	232.54	197.81	190.00
Personnel	Full-time	5	8	103
	Part-time	16	15	2
Gender	Male	4	4	15
	Female	17	19	90
Certificate Level	4 Yr Bachelor's	6	7	49
	5 Yr Master's	9	12	51
	6 Yr Specialist's	4	3	4
	7 Yr Doctoral	2	1	1
	Other *	0	0	0
Years Experience	<1	1	1	9
	1-10	6	12	49
	11-20	4	4	31
	21-30	9	5	15
	>30	1	1	1
	Average	17.81	12.39	10.94

* Includes One- and Two-Year Vocational Certificates.

ACCREDITATION DATA

Accredited by Southern Association of Colleges and Schools (SACS):
Elementary/Middle Commission

AWARDS/RECOGNITION DATA

Schools in Georgia may receive recognition in the following programs:

- Charter School
- Pay for Performance Program
- Georgia School of Excellence
- National Blue Ribbon School

Taylor Road Middle School did not receive recognition in any of these programs during the 2000-2001 school year.

For more information about these programs, contact your school principal or the school system central office.