

2000-2001 Georgia Public Education Report Card

Fulton County

Sweet Apple Elementary School - 6600298

Grade Range - PK-5

The Georgia Public Education Report Card is designed to assist systems and schools in educational improvement. This report card contains a variety of data elements. An explanation of the terms is provided as a companion to the report card data. Please refer to the definitions for the most effective use of the reported data.

STUDENT DATA

Total Enrollment, by Race/Ethnicity and Gender

Total		Black	White	Hispanic	Asian	American Indian	Multi-Racial	Male	Female
K-5:	1,180	93 7.9%	938 79.5%	52 4.4%	58 4.9%	3 0.3%	36 3.1%	653 55.3%	527 44.7%
PK:	2	0 0.0%	2 100.0%	0 0.0%	0 0.0%	0 0.0%	0 0.0%	2 100.0%	0 0.0%

Enrollment in Selected Programs

Program	Program Enrollment	% of Student Population
Gifted (Grades K-12)	117	9.9%
Alternative Programs (Grades K-12)	0	0.0%

Enrollment in Compensatory Programs

Program	Program Enrollment	% of Student Population
Special Education (Grades K-12) (PK)	150 8	12.7% N/A
English to Speakers of Other Languages (ESOL) (Grades K-12)	32	2.7%
Early Intervention Program (EIP) (Grades K-3)	57	7.3%
Remedial Education (Grades 4-5, 9-12)	33	8.3%
Title I (Grades K-12)	This School has no Title I Program.	

Students Eligible to Receive Free/Reduced-price Lunches

	Number	Percent
School	60	5.1%
System	21,659	31.6%

Dropout Rate *

	Number	Percent
School	N/A	N/A
System	N/A	N/A

* - Dropouts are not reported for grades PK-5.

Retained Students, by Race/Ethnicity and Gender

Total	Black	White	Hispanic	Asian	American Indian	Multi-Racial	Male	Female
17	2 11.8%	13 76.5%	2 11.8%	0 0.0%	0 0.0%	0 0.0%	10 58.8%	7 41.2%

2000-2001 Georgia Public Education Report Card

Fulton County

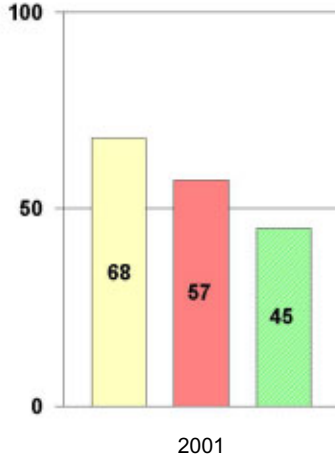
Sweet Apple Elementary School

NORM-REFERENCED ASSESSMENTS

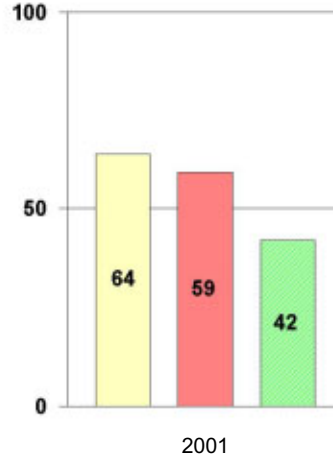
Stanford 9 Tests, Grade 3

Each chart reflects data for one year of testing.

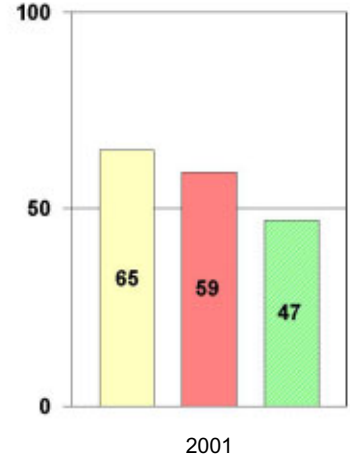
Total Reading



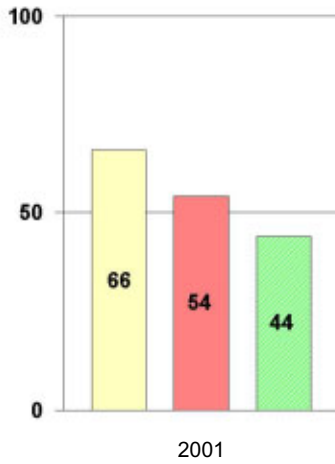
Total Mathematics



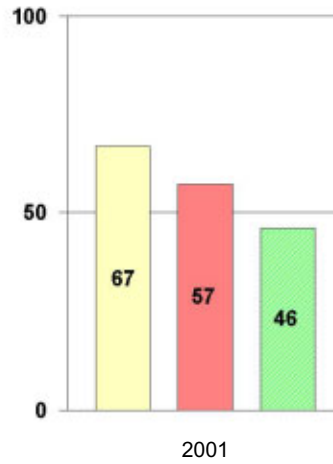
Language



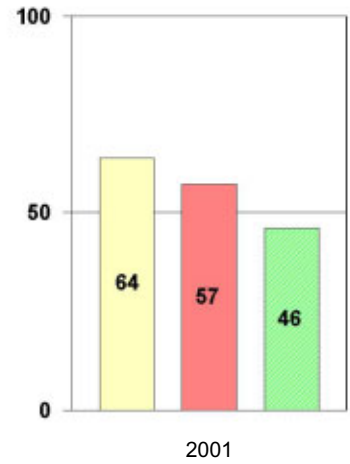
Science



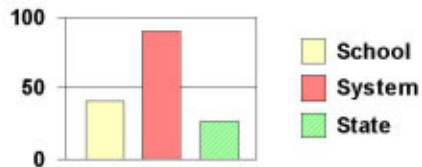
Social Science



Complete Battery



Legend



2000-2001 Georgia Public Education Report Card

Fulton County

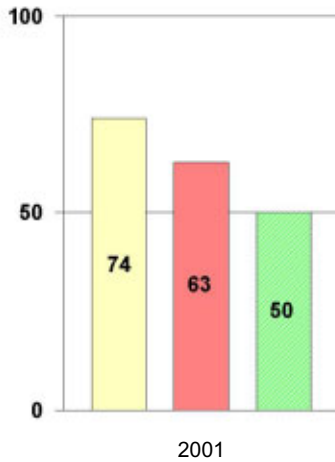
Sweet Apple Elementary School

NORM-REFERENCED ASSESSMENTS

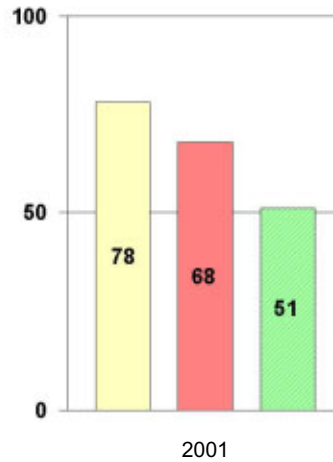
Stanford 9 Tests, Grade 5

Each chart reflects data for one year of testing.

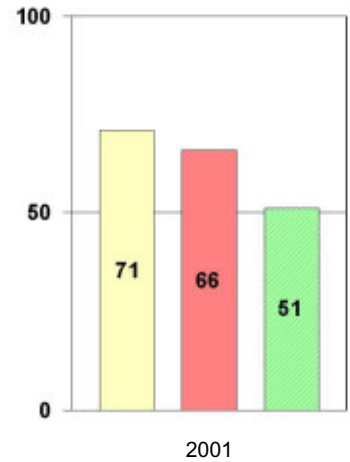
Total Reading



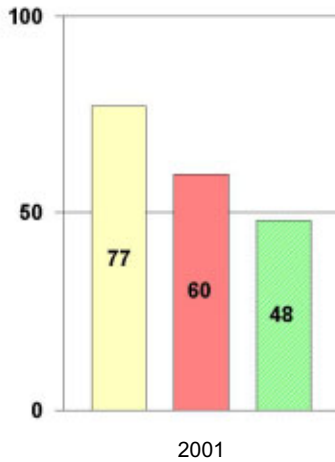
Total Mathematics



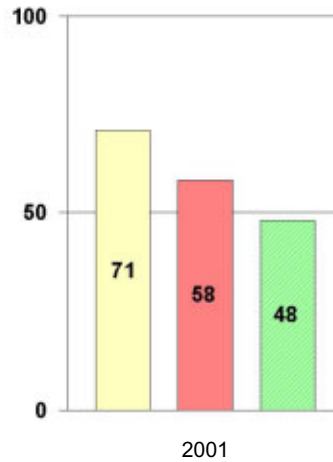
Language



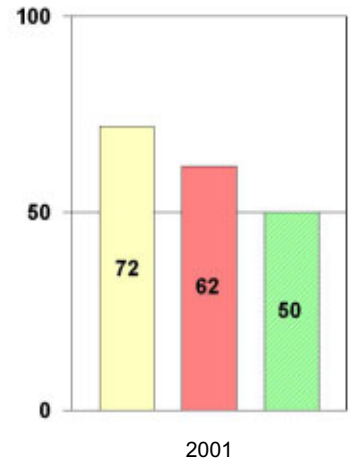
Science



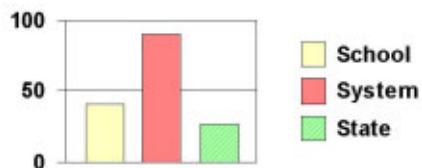
Social Science



Complete Battery



Legend



2000-2001 Georgia Public Education Report Card

Fulton County Sweet Apple Elementary School

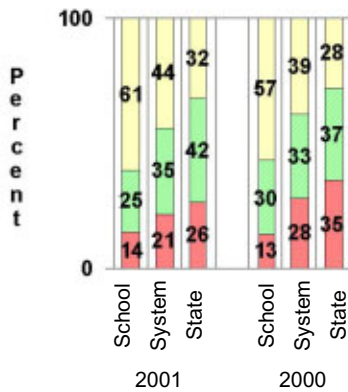
CRITERION-REFERENCED ASSESSMENTS

Criterion-Referenced Competency Tests (CRCTs)

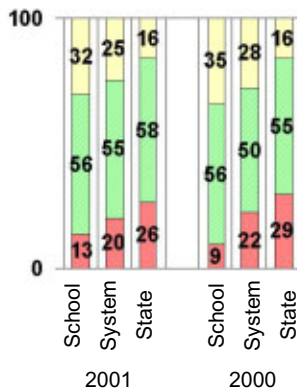
Percentage of Students Scoring in the Indicated Achievement Levels

Each chart reflects data for two years of testing.

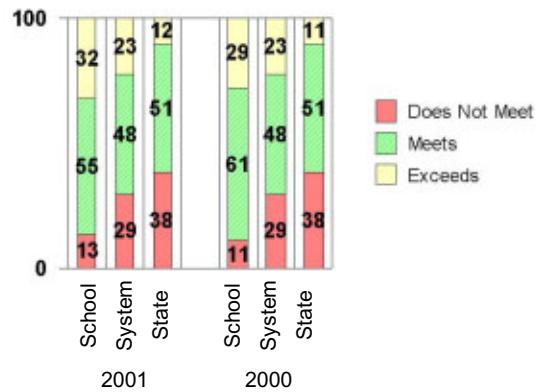
Grade 4 Reading



Grade 4 Language Arts



Grade 4 Mathematics



PERFORMANCE ASSESSMENTS

Grade 5 Writing Assessment

Percent at Developmental Stages:	2000-2001			1999-2000			1998-99		
	School	System	State	School	System	State	School	System	State
Stage 1: The Emerging Writer	0%	1%	1%	0%	1%	1%	0%	0%	1%
Stage 2: The Developing Writer	1%	2%	2%	1%	3%	2%	0%	2%	2%
Stage 3: The Focusing Writer	5%	14%	17%	12%	16%	19%	8%	14%	19%
Stage 4: The Experimenting Writer	29%	34%	42%	36%	38%	41%	26%	35%	41%
Stage 5: The Engaging Writer	44%	32%	29%	34%	29%	27%	40%	31%	27%
Stage 6: The Extending Writer	21%	17%	9%	17%	14%	9%	26%	18%	11%

2000-2001 Georgia Public Education Report Card

Fulton County

Sweet Apple Elementary School

CERTIFIED PERSONNEL DATA

		Administrators	Support Personnel	PK-12 Teachers
Positions	Number	3.58	7.20	71.50
	Average Contract Days	232.10	195.00	190.21
Personnel	Full-time	3	6	66
	Part-time	9	3	10
Gender	Male	3	0	6
	Female	9	9	70
Certificate Level	4 Yr Bachelor's	5	1	47
	5 Yr Master's	5	6	26
	6 Yr Specialist's	2	1	3
	7 Yr Doctoral	0	1	0
	Other *	0	0	0
Years Experience	<1	0	1	8
	1-10	6	4	42
	11-20	4	2	19
	21-30	2	1	6
	>30	0	1	1
	Average	11.67	10.33	8.20

* Includes One- and Two-Year Vocational Certificates.

ACCREDITATION DATA

Accredited by Southern Association of Colleges and Schools (SACS):
Elementary/Middle Commission

AWARDS/RECOGNITION DATA

Schools in Georgia may receive recognition in the following programs:

- Charter School
- Pay for Performance Program
- Georgia School of Excellence
- National Blue Ribbon School

Sweet Apple Elementary School did not receive recognition in any of these programs during the 2000-2001 school year.

For more information about these programs, contact your school principal or the school system central office.