

# 2000-2001 Georgia Public Education Report Card

## Fulton County

### Summit Hill Elementary - 6600100

Grade Range - PK-5

The Georgia Public Education Report Card is designed to assist systems and schools in educational improvement. This report card contains a variety of data elements. An explanation of the terms is provided as a companion to the report card data. Please refer to the definitions for the most effective use of the reported data.

#### STUDENT DATA

##### Total Enrollment, by Race/Ethnicity and Gender

Total	Black	White	Hispanic	Asian	American Indian	Multi-Racial	Male	Female
K-5: 863	17 2.0%	804 93.2%	15 1.7%	10 1.2%	0 0.0%	17 2.0%	452 52.4%	411 47.6%
PK: 17	0 0.0%	15 88.2%	1 5.9%	0 0.0%	0 0.0%	1 5.9%	15 88.2%	2 11.8%

##### Enrollment in Selected Programs

Program	Program Enrollment	% of Student Population
Gifted (Grades K-12)	57	6.6%
Alternative Programs (Grades K-12)	0	0.0%

##### Enrollment in Compensatory Programs

Program	Program Enrollment	% of Student Population
Special Education (Grades K-12) (PK)	93 16	10.8% N/A
English to Speakers of Other Languages (ESOL) (Grades K-12)	0	0.0%
Early Intervention Program (EIP) (Grades K-3)	37	6.7%
Remedial Education (Grades 4-5, 9-12)	22	7.1%
Title I (Grades K-12)	This School has no Title I Program.	

##### Students Eligible to Receive Free/Reduced-price Lunches

	Number	Percent
School	8	0.9%
System	21,659	31.6%

##### Dropout Rate \*

	Number	Percent
School	N/A	N/A
System	N/A	N/A

\* - Dropouts are not reported for grades PK-5.

##### Retained Students, by Race/Ethnicity and Gender

Total	Black	White	Hispanic	Asian	American Indian	Multi-Racial	Male	Female
7	0 0.0%	6 85.7%	1 14.3%	0 0.0%	0 0.0%	0 0.0%	5 71.4%	2 28.6%

# 2000-2001 Georgia Public Education Report Card

## Fulton County

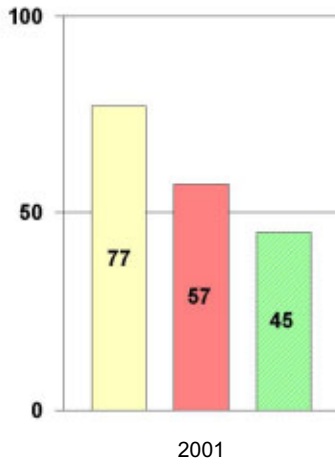
### Summit Hill Elementary

#### NORM-REFERENCED ASSESSMENTS

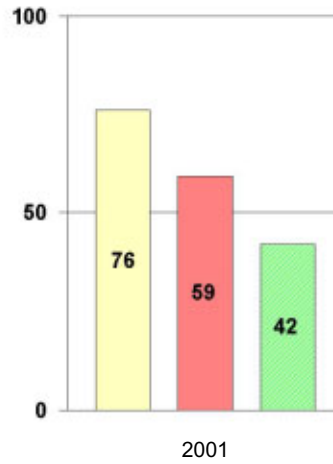
##### Stanford 9 Tests, Grade 3

Each chart reflects data for one year of testing.

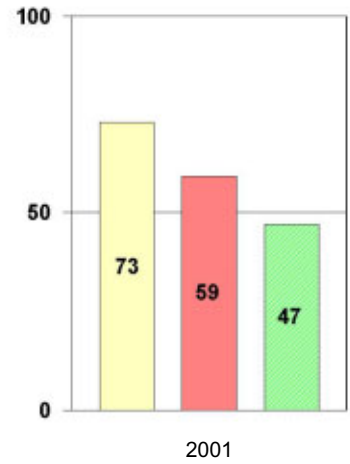
###### Total Reading



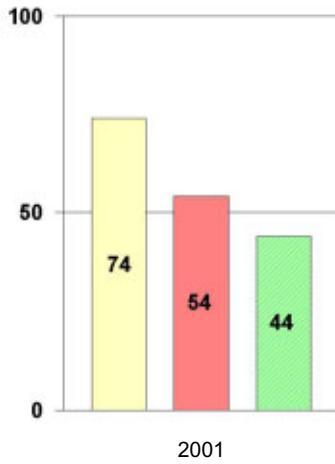
###### Total Mathematics



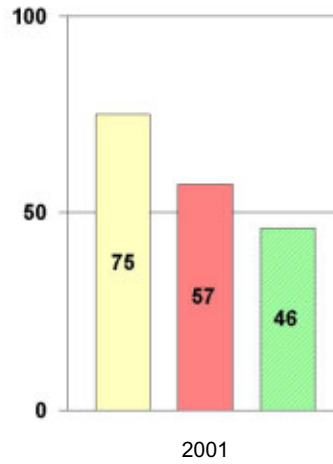
###### Language



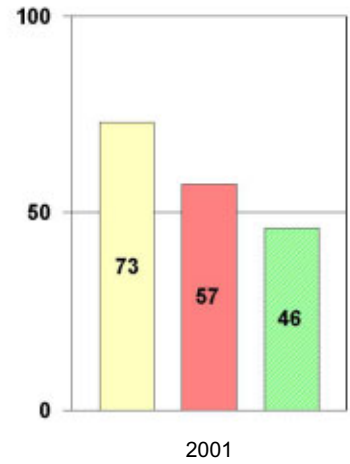
###### Science



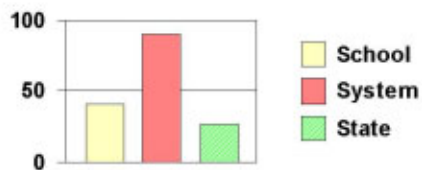
###### Social Science



###### Complete Battery



#### Legend



# 2000-2001 Georgia Public Education Report Card

## Fulton County

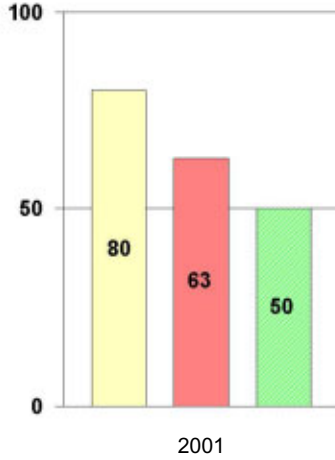
### Summit Hill Elementary

#### NORM-REFERENCED ASSESSMENTS

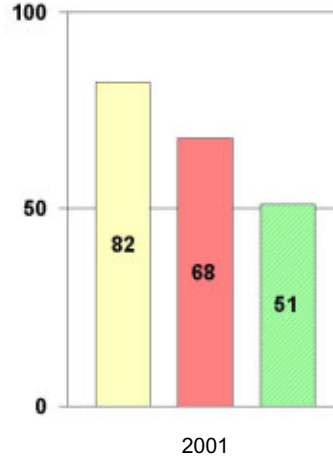
##### Stanford 9 Tests, Grade 5

Each chart reflects data for one year of testing.

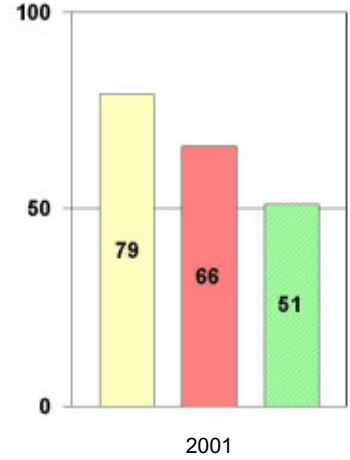
###### Total Reading



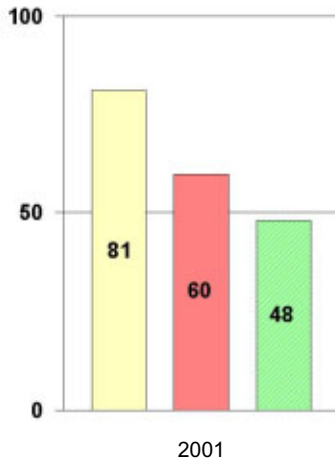
###### Total Mathematics



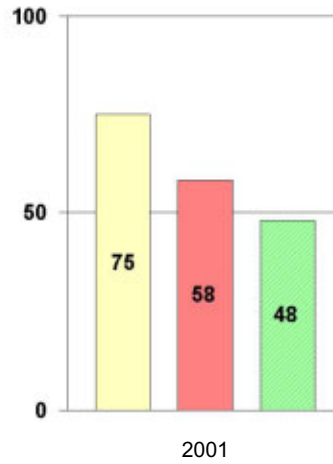
###### Language



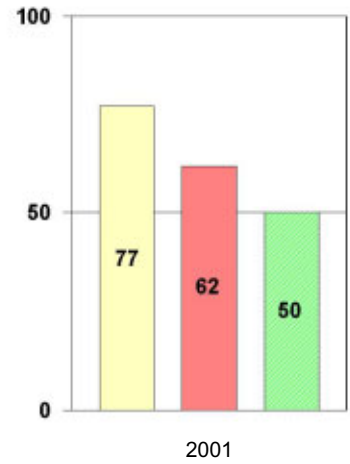
###### Science



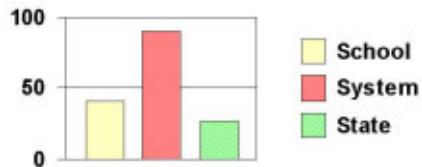
###### Social Science



###### Complete Battery



#### Legend



# 2000-2001 Georgia Public Education Report Card

## Fulton County Summit Hill Elementary

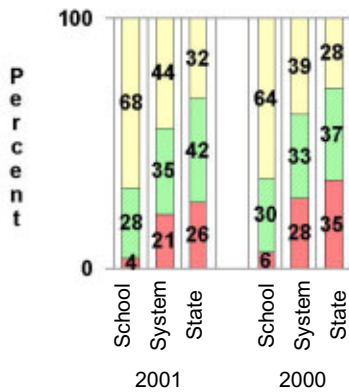
### CRITERION-REFERENCED ASSESSMENTS

#### Criterion-Referenced Competency Tests (CRCTs)

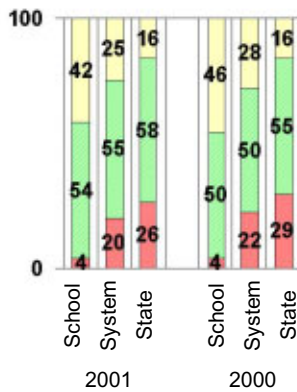
Percentage of Students Scoring in the Indicated Achievement Levels

Each chart reflects data for two years of testing.

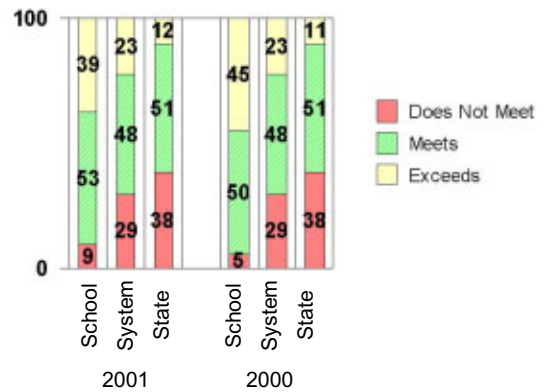
Grade 4 Reading



Grade 4 Language Arts



Grade 4 Mathematics



### PERFORMANCE ASSESSMENTS

#### Grade 5 Writing Assessment

Percent at Developmental Stages:	2000-2001			1999-2000			1998-99		
	School	System	State	School	System	State	School	System	State
<b>Stage 1:</b> The Emerging Writer	0%	1%	1%	1%	1%	1%	0%	0%	1%
<b>Stage 2:</b> The Developing Writer	0%	2%	2%	0%	3%	2%	0%	2%	2%
<b>Stage 3:</b> The Focusing Writer	2%	14%	17%	9%	16%	19%	0%	14%	19%
<b>Stage 4:</b> The Experimenting Writer	21%	34%	42%	31%	38%	41%	0%	35%	41%
<b>Stage 5:</b> The Engaging Writer	34%	32%	29%	35%	29%	27%	0%	31%	27%
<b>Stage 6:</b> The Extending Writer	43%	17%	9%	25%	14%	9%	0%	18%	11%

# 2000-2001 Georgia Public Education Report Card

## Fulton County

### Summit Hill Elementary

#### CERTIFIED PERSONNEL DATA

		Administrators	Support Personnel	PK-12 Teachers
Positions	Number	2.40	5.80	51.94
	Average Contract Days	231.85	195.18	190.29
Personnel	Full-time	2	4	50
	Part-time	9	5	8
Gender	Male	1	0	5
	Female	10	9	53
Certificate Level	4 Yr Bachelor's	2	1	34
	5 Yr Master's	9	7	23
	6 Yr Specialist's	0	1	1
	7 Yr Doctoral	0	0	0
	Other *	0	0	0
Years Experience	<1	0	1	5
	1-10	4	3	34
	11-20	4	2	15
	21-30	3	3	4
	>30	0	0	0
	Average	13.91	13.67	8.07

\* Includes One- and Two-Year Vocational Certificates.

#### ACCREDITATION DATA

Accredited by Southern Association of Colleges and Schools (SACS):  
Elementary/Middle Commission

#### AWARDS/RECOGNITION DATA

Schools in Georgia may receive recognition in the following programs:

- Charter School
- Pay for Performance Program
- Georgia School of Excellence
- National Blue Ribbon School

Summit Hill Elementary did not receive recognition in any of these programs during the 2000-2001 school year.

For more information about these programs, contact your school principal or the school system central office.