

# 2000-2001 Georgia Public Education Report Card

## Fulton County

### Stonewall Tell Elementary School - 6600199

Grade Range - PK-5

The Georgia Public Education Report Card is designed to assist systems and schools in educational improvement. This report card contains a variety of data elements. An explanation of the terms is provided as a companion to the report card data. Please refer to the definitions for the most effective use of the reported data.

#### STUDENT DATA

##### Total Enrollment, by Race/Ethnicity and Gender

Total	Black	White	Hispanic	Asian	American Indian	Multi-Racial	Male	Female
K-5: 622	578 92.9%	17 2.7%	6 1.0%	3 0.5%	1 0.2%	17 2.7%	316 50.8%	306 49.2%
PK: 81	75 92.6%	4 4.9%	1 1.2%	0 0.0%	0 0.0%	1 1.2%	51 63.0%	30 37.0%

##### Enrollment in Selected Programs

Program	Program Enrollment	% of Student Population
Gifted (Grades K-12)	9	1.4%
Alternative Programs (Grades K-12)	0	0.0%

##### Enrollment in Compensatory Programs

Program	Program Enrollment	% of Student Population
Special Education (Grades K-12)	67	10.8%
(PK)	24	N/A
English to Speakers of Other Languages (ESOL) (Grades K-12)	0	0.0%
Early Intervention Program (EIP) (Grades K-3)	100	24.6%
Remedial Education (Grades 4-5, 9-12)	57	26.5%
Title I (Grades K-12)	This School has a Targeted-Assistance Title I Program.	

##### Students Eligible to Receive Free/Reduced-price Lunches

	Number	Percent
School	554	78.8%
System	21,659	31.6%

##### Dropout Rate \*

	Number	Percent
School	N/A	N/A
System	N/A	N/A

\* - Dropouts are not reported for grades PK-5.

##### Retained Students, by Race/Ethnicity and Gender

Total	Black	White	Hispanic	Asian	American Indian	Multi-Racial	Male	Female
16	13 81.3%	3 18.8%	0 0.0%	0 0.0%	0 0.0%	0 0.0%	9 56.3%	7 43.8%

# 2000-2001 Georgia Public Education Report Card

## Fulton County

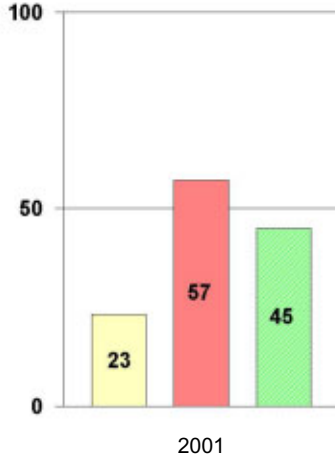
### Stonewall Tell Elementary School

#### NORM-REFERENCED ASSESSMENTS

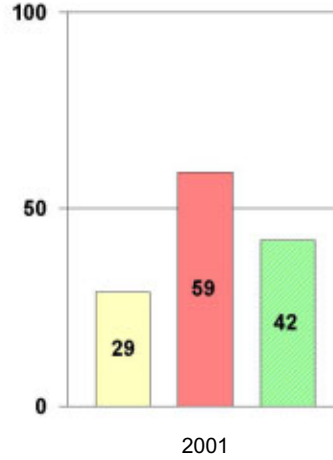
##### Stanford 9 Tests, Grade 3

Each chart reflects data for one year of testing.

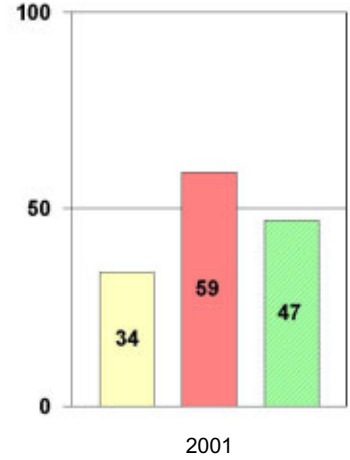
**Total Reading**



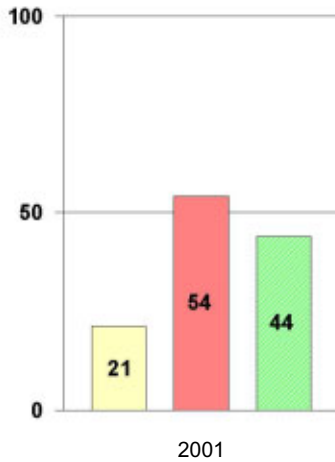
**Total Mathematics**



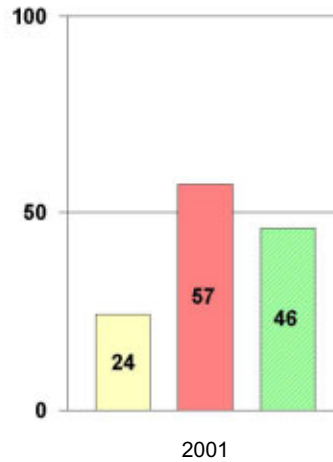
**Language**



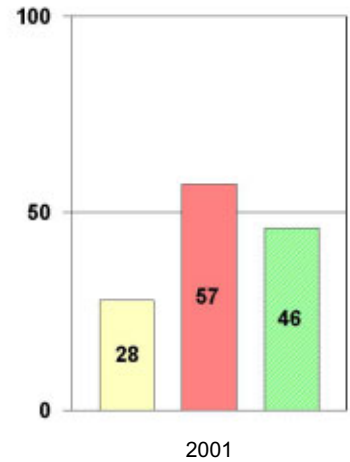
**Science**



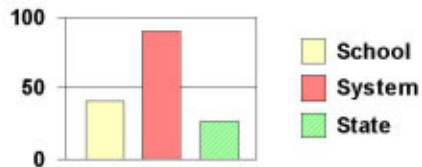
**Social Science**



**Complete Battery**



#### Legend



# 2000-2001 Georgia Public Education Report Card

## Fulton County

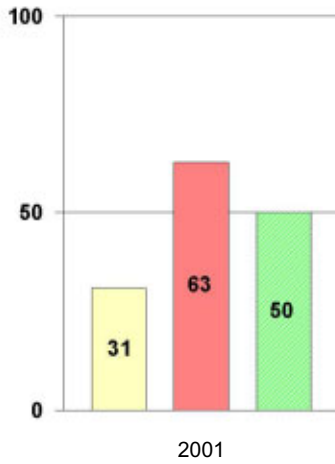
### Stonewall Tell Elementary School

#### NORM-REFERENCED ASSESSMENTS

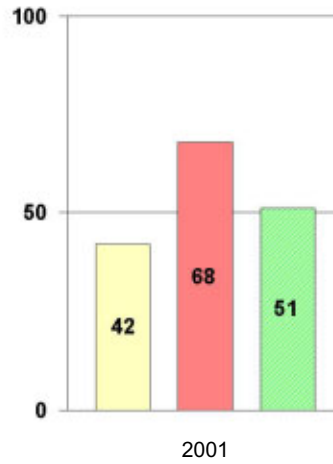
##### Stanford 9 Tests, Grade 5

Each chart reflects data for one year of testing.

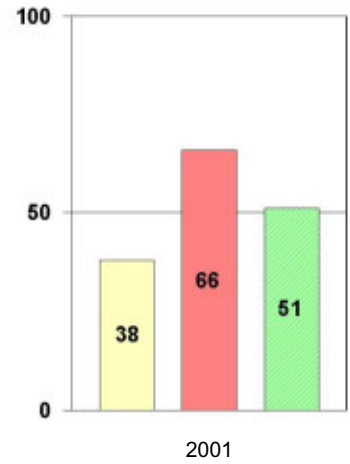
**Total Reading**



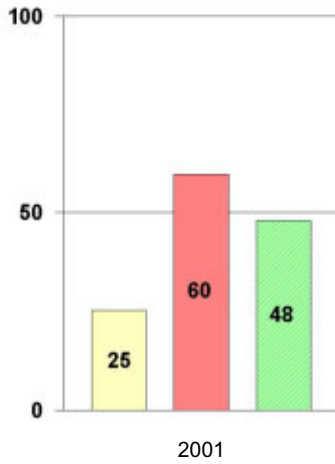
**Total Mathematics**



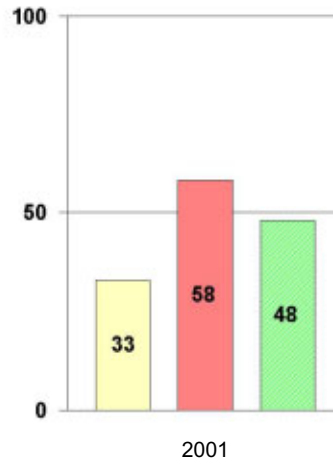
**Language**



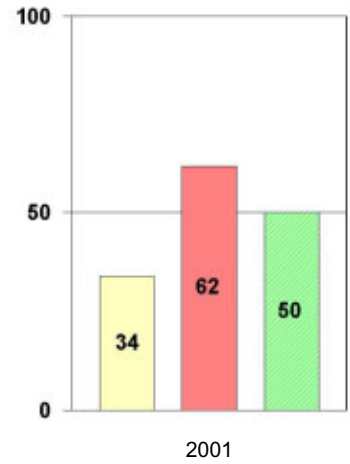
**Science**



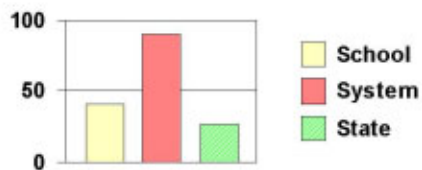
**Social Science**



**Complete Battery**



#### Legend



# 2000-2001 Georgia Public Education Report Card

## Fulton County

### Stonewall Tell Elementary School

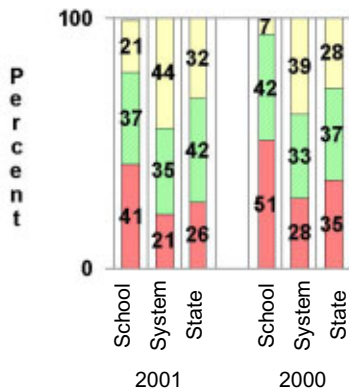
#### CRITERION-REFERENCED ASSESSMENTS

##### Criterion-Referenced Competency Tests (CRCTs)

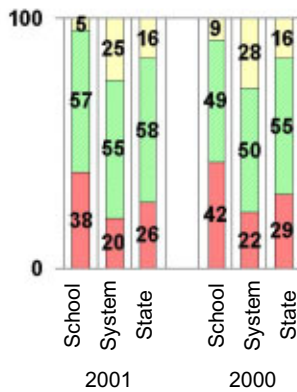
Percentage of Students Scoring in the Indicated Achievement Levels

Each chart reflects data for two years of testing.

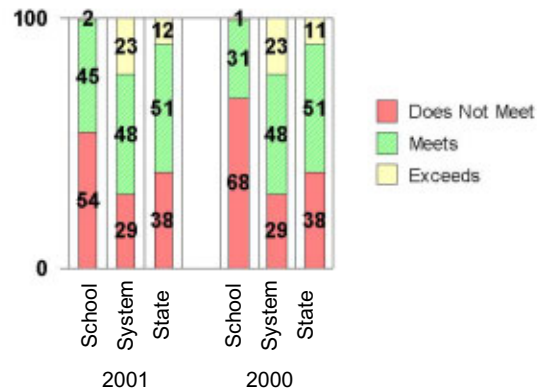
Grade 4 Reading



Grade 4 Language Arts



Grade 4 Mathematics



#### PERFORMANCE ASSESSMENTS

##### Grade 5 Writing Assessment

Percent at Developmental Stages:	2000-2001			1999-2000			1998-99		
	School	System	State	School	System	State	School	System	State
<b>Stage 1:</b> The Emerging Writer	0%	1%	1%	2%	1%	1%	1%	0%	1%
<b>Stage 2:</b> The Developing Writer	7%	2%	2%	5%	3%	2%	2%	2%	2%
<b>Stage 3:</b> The Focusing Writer	35%	14%	17%	40%	16%	19%	22%	14%	19%
<b>Stage 4:</b> The Experimenting Writer	46%	34%	42%	44%	38%	41%	54%	35%	41%
<b>Stage 5:</b> The Engaging Writer	10%	32%	29%	5%	29%	27%	15%	31%	27%
<b>Stage 6:</b> The Extending Writer	2%	17%	9%	4%	14%	9%	6%	18%	11%

# 2000-2001 Georgia Public Education Report Card

## Fulton County

### Stonewall Tell Elementary School

#### CERTIFIED PERSONNEL DATA

		Administrators	Support Personnel	PK-12 Teachers
Positions	Number	2.33	7.34	42.82
	Average Contract Days	233.17	195.31	190.70
Personnel	Full-time	2	5	42
	Part-time	8	8	4
Gender	Male	1	1	5
	Female	9	12	41
Certificate Level	4 Yr Bachelor's	2	1	23
	5 Yr Master's	6	9	19
	6 Yr Specialist's	2	3	4
	7 Yr Doctoral	0	0	0
	Other *	0	0	0
Years Experience	<1	0	0	4
	1-10	4	3	23
	11-20	4	7	9
	21-30	2	3	7
	>30	0	0	3
	Average	13.40	16.77	11.52

\* Includes One- and Two-Year Vocational Certificates.

#### ACCREDITATION DATA

Accredited by Southern Association of Colleges and Schools (SACS):  
Elementary/Middle Commission

#### AWARDS/RECOGNITION DATA

Schools in Georgia may receive recognition in the following programs:

- Charter School
- Pay for Performance Program
- Georgia School of Excellence
- National Blue Ribbon School

Stonewall Tell Elementary School did not receive recognition in any of these programs during the 2000-2001 school year.

For more information about these programs, contact your school principal or the school system central office.