

2000-2001 Georgia Public Education Report Card

Fulton County

State Bridge Crossing Elementary School - 6600297

Grade Range - PK-5

The Georgia Public Education Report Card is designed to assist systems and schools in educational improvement. This report card contains a variety of data elements. An explanation of the terms is provided as a companion to the report card data. Please refer to the definitions for the most effective use of the reported data.

STUDENT DATA

Total Enrollment, by Race/Ethnicity and Gender

Total	Black	White	Hispanic	Asian	American Indian	Multi-Racial	Male	Female
K-5: 864	58 6.7%	580 67.1%	36 4.2%	163 18.9%	1 0.1%	26 3.0%	423 49.0%	441 51.0%
PK: 20	4 20.0%	10 50.0%	2 10.0%	4 20.0%	0 0.0%	0 0.0%	8 40.0%	12 60.0%

Enrollment in Selected Programs

Program	Program Enrollment	% of Student Population
Gifted (Grades K-12)	62	7.2%
Alternative Programs (Grades K-12)	0	0.0%

Enrollment in Compensatory Programs

Program	Program Enrollment	% of Student Population
Special Education (Grades K-12) (PK)	76 2	8.8% N/A
English to Speakers of Other Languages (ESOL) (Grades K-12)	59	6.8%
Early Intervention Program (EIP) (Grades K-3)	55	9.8%
Remedial Education (Grades 4-5, 9-12)	36	11.8%
Title I (Grades K-12)	This School has no Title I Program.	

Students Eligible to Receive Free/Reduced-price Lunches

	Number	Percent
School	35	4.0%
System	21,659	31.6%

Dropout Rate *

	Number	Percent
School	N/A	N/A
System	N/A	N/A

* - Dropouts are not reported for grades PK-5.

Retained Students, by Race/Ethnicity and Gender

Total	Black	White	Hispanic	Asian	American Indian	Multi-Racial	Male	Female
1	0 0.0%	1 100.0%	0 0.0%	0 0.0%	0 0.0%	0 0.0%	1 100.0%	0 0.0%

2000-2001 Georgia Public Education Report Card

Fulton County

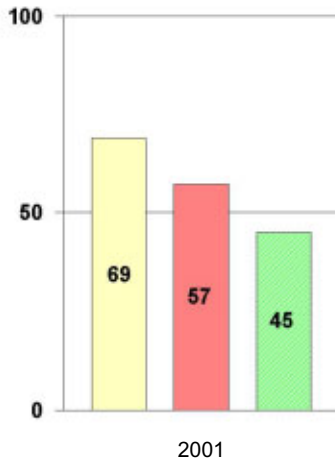
State Bridge Crossing Elementary School

NORM-REFERENCED ASSESSMENTS

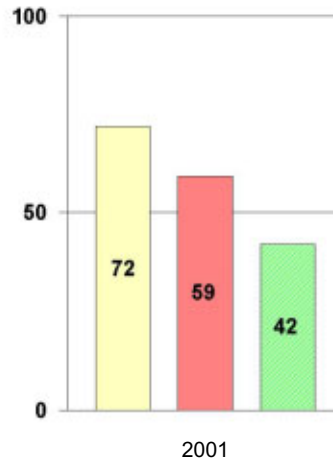
Stanford 9 Tests, Grade 3

Each chart reflects data for one year of testing.

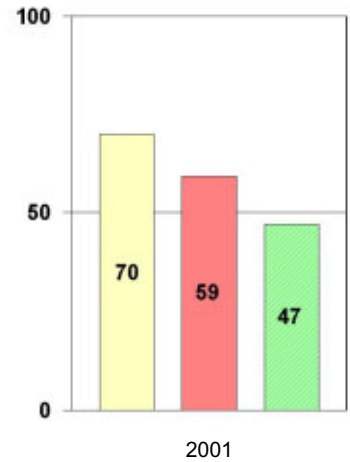
Total Reading



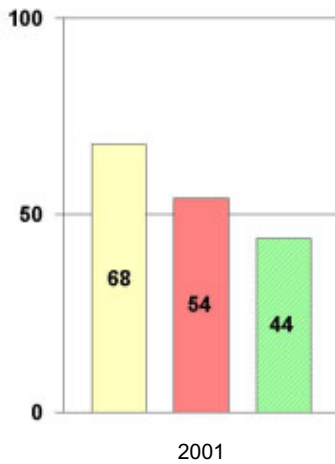
Total Mathematics



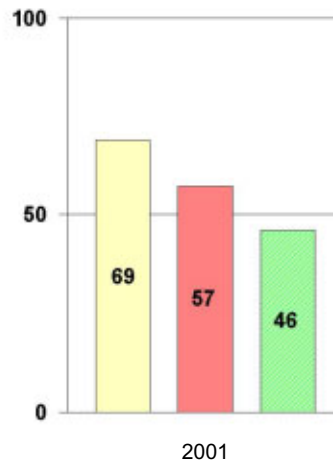
Language



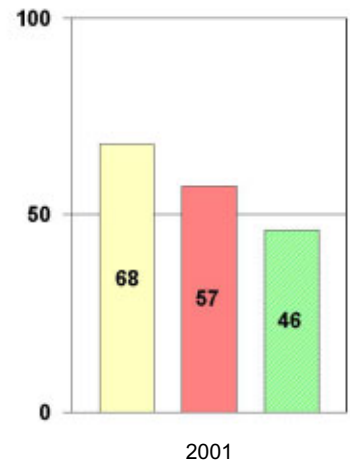
Science



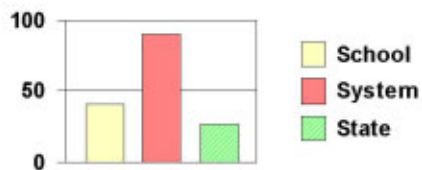
Social Science



Complete Battery



Legend



2000-2001 Georgia Public Education Report Card

Fulton County

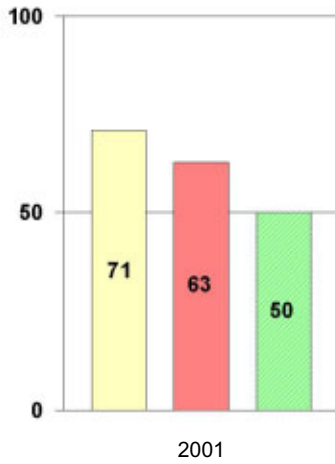
State Bridge Crossing Elementary School

NORM-REFERENCED ASSESSMENTS

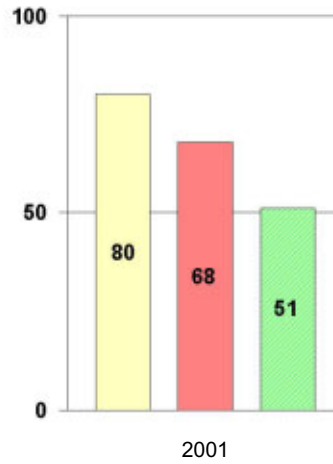
Stanford 9 Tests, Grade 5

Each chart reflects data for one year of testing.

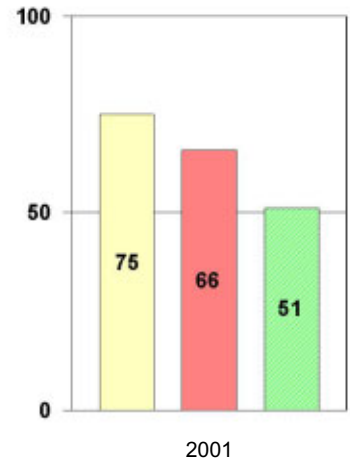
Total Reading



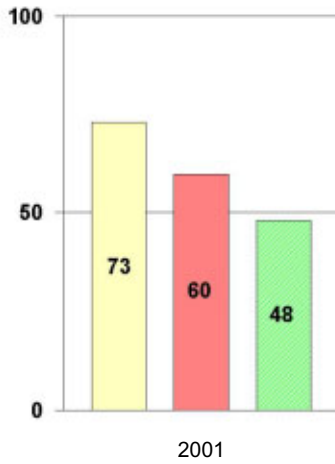
Total Mathematics



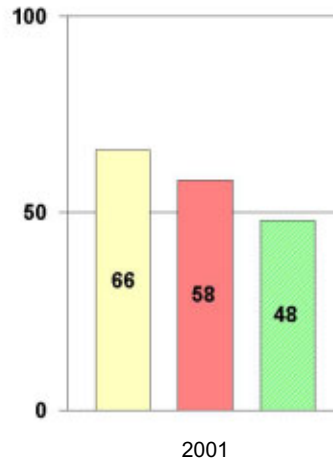
Language



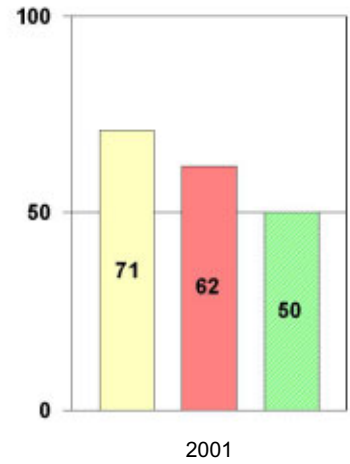
Science



Social Science



Complete Battery



Legend



2000-2001 Georgia Public Education Report Card

Fulton County

State Bridge Crossing Elementary School

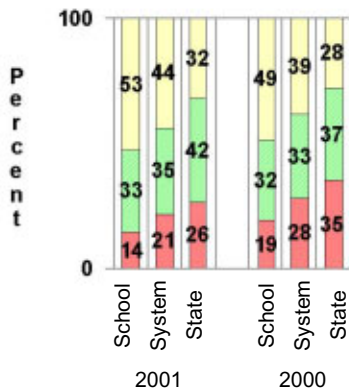
CRITERION-REFERENCED ASSESSMENTS

Criterion-Referenced Competency Tests (CRCTs)

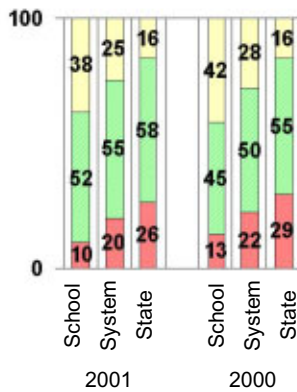
Percentage of Students Scoring in the Indicated Achievement Levels

Each chart reflects data for two years of testing.

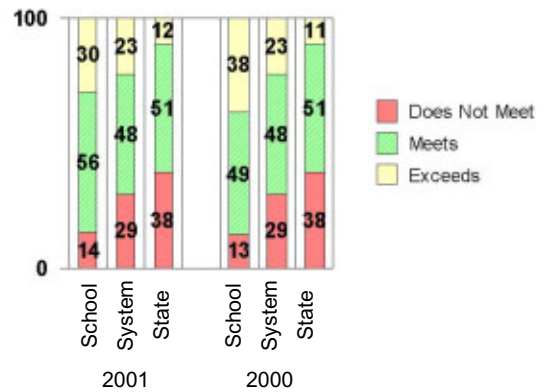
Grade 4 Reading



Grade 4 Language Arts



Grade 4 Mathematics



PERFORMANCE ASSESSMENTS

Grade 5 Writing Assessment

Percent at Developmental Stages:	2000-2001			1999-2000			1998-99		
	School	System	State	School	System	State	School	System	State
Stage 1: The Emerging Writer	0%	1%	1%	0%	1%	1%	0%	0%	1%
Stage 2: The Developing Writer	1%	2%	2%	0%	3%	2%	1%	2%	2%
Stage 3: The Focusing Writer	8%	14%	17%	5%	16%	19%	8%	14%	19%
Stage 4: The Experimenting Writer	25%	34%	42%	33%	38%	41%	25%	35%	41%
Stage 5: The Engaging Writer	46%	32%	29%	40%	29%	27%	36%	31%	27%
Stage 6: The Extending Writer	20%	17%	9%	22%	14%	9%	30%	18%	11%

2000-2001 Georgia Public Education Report Card

Fulton County

State Bridge Crossing Elementary School

CERTIFIED PERSONNEL DATA

		Administrators	Support Personnel	PK-12 Teachers
Positions	Number	2.37	4.67	56.76
	Average Contract Days	232.35	195.90	190.26
Personnel	Full-time	2	3	54
	Part-time	8	7	7
Gender	Male	1	0	2
	Female	9	10	59
Certificate Level	4 Yr Bachelor's	3	1	37
	5 Yr Master's	5	7	24
	6 Yr Specialist's	2	2	0
	7 Yr Doctoral	0	0	0
	Other *	0	0	0
Years Experience	<1	0	1	4
	1-10	4	4	42
	11-20	4	2	9
	21-30	1	2	6
	>30	1	1	0
	Average	14.20	13.90	7.95

* Includes One- and Two-Year Vocational Certificates.

ACCREDITATION DATA

Accredited by Southern Association of Colleges and Schools (SACS):
Elementary/Middle Commission

AWARDS/RECOGNITION DATA

Schools in Georgia may receive recognition in the following programs:

- Charter School
- Pay for Performance Program
- Georgia School of Excellence
- National Blue Ribbon School

State Bridge Crossing Elementary School did not receive recognition in any of these programs during the 2000-2001 school year.

For more information about these programs, contact your school principal or the school system central office.