

2000-2001 Georgia Public Education Report Card

Fulton County

Spalding Drive Elementary School - 6605067

Grade Range - PK-5

The Georgia Public Education Report Card is designed to assist systems and schools in educational improvement. This report card contains a variety of data elements. An explanation of the terms is provided as a companion to the report card data. Please refer to the definitions for the most effective use of the reported data.

STUDENT DATA

Total Enrollment, by Race/Ethnicity and Gender

Total	Black	White	Hispanic	Asian	American Indian	Multi-Racial	Male	Female
K-5: 566	198 35.0%	192 33.9%	113 20.0%	28 4.9%	0 0.0%	35 6.2%	276 48.8%	290 51.2%
PK: 19	5 26.3%	6 31.6%	3 15.8%	3 15.8%	0 0.0%	2 10.5%	10 52.6%	9 47.4%

Enrollment in Selected Programs

Program	Program Enrollment	% of Student Population
Gifted (Grades K-12)	29	5.1%
Alternative Programs (Grades K-12)	0	0.0%

Enrollment in Compensatory Programs

Program	Program Enrollment	% of Student Population
Special Education (Grades K-12) (PK)	69 0	12.2% N/A
English to Speakers of Other Languages (ESOL) (Grades K-12)	94	16.6%
Early Intervention Program (EIP) (Grades K-3)	121	33.9%
Remedial Education (Grades 4-5, 9-12)	57	27.3%
Title I (Grades K-12)	This School has no Title I Program.	

Students Eligible to Receive Free/Reduced-price Lunches

	Number	Percent
School	250	42.7%
System	21,659	31.6%

Dropout Rate *

	Number	Percent
School	N/A	N/A
System	N/A	N/A

* - Dropouts are not reported for grades PK-5.

Retained Students, by Race/Ethnicity and Gender

Total	Black	White	Hispanic	Asian	American Indian	Multi-Racial	Male	Female
9	3 33.3%	3 33.3%	1 11.1%	1 11.1%	0 0.0%	1 11.1%	7 77.8%	2 22.2%

2000-2001 Georgia Public Education Report Card

Fulton County

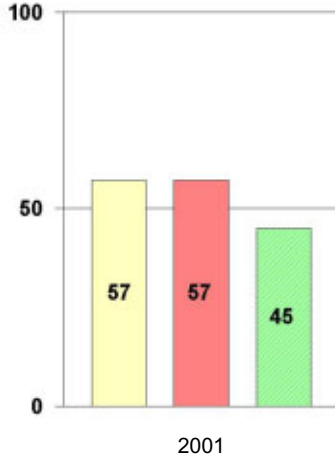
Spalding Drive Elementary School

NORM-REFERENCED ASSESSMENTS

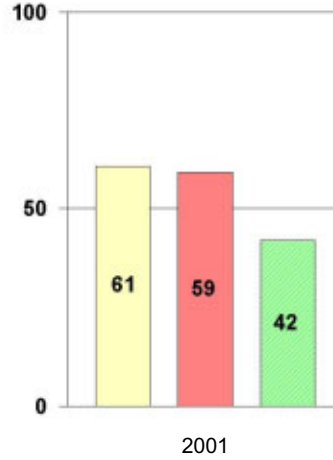
Stanford 9 Tests, Grade 3

Each chart reflects data for one year of testing.

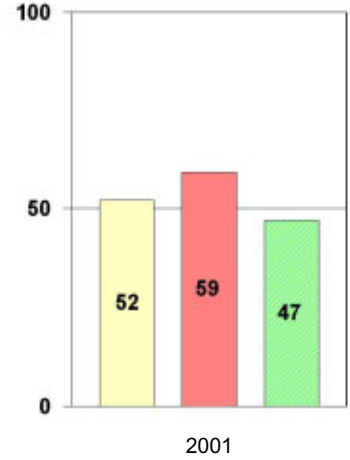
Total Reading



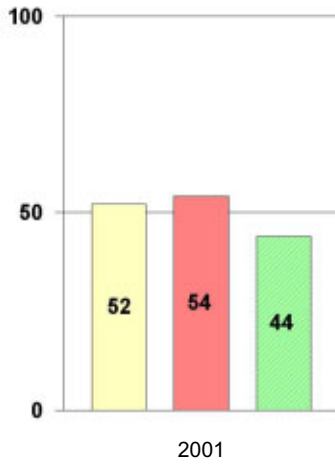
Total Mathematics



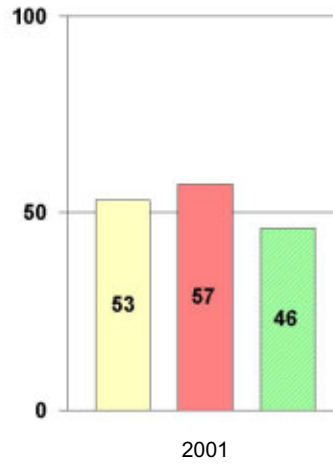
Language



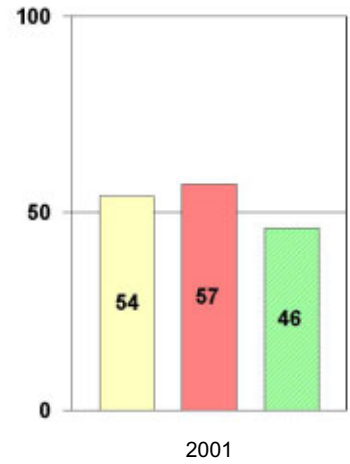
Science



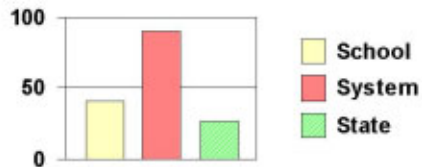
Social Science



Complete Battery



Legend



2000-2001 Georgia Public Education Report Card

Fulton County

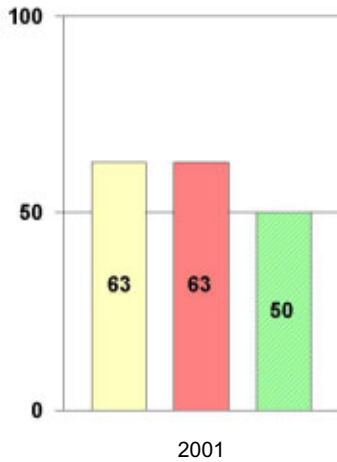
Spalding Drive Elementary School

NORM-REFERENCED ASSESSMENTS

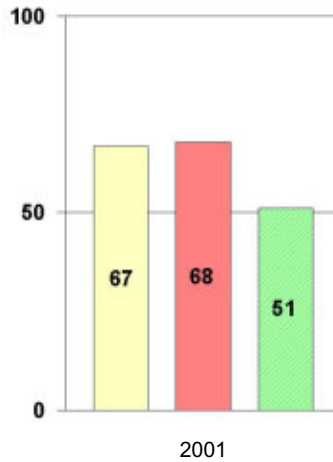
Stanford 9 Tests, Grade 5

Each chart reflects data for one year of testing.

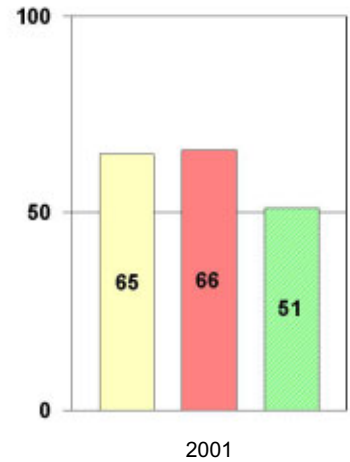
Total Reading



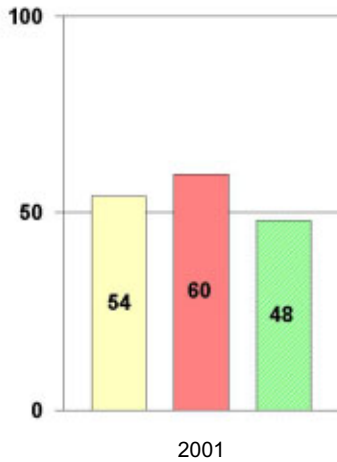
Total Mathematics



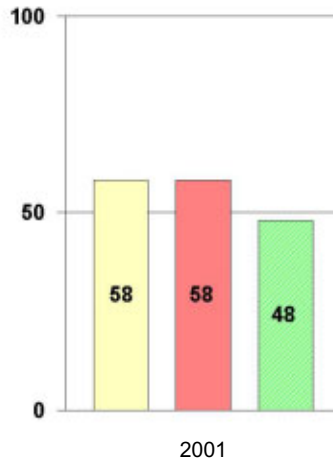
Language



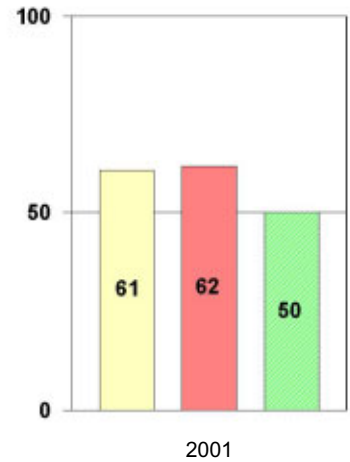
Science



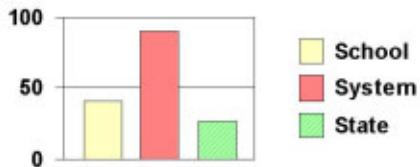
Social Science



Complete Battery



Legend



2000-2001 Georgia Public Education Report Card

Fulton County

Spalding Drive Elementary School

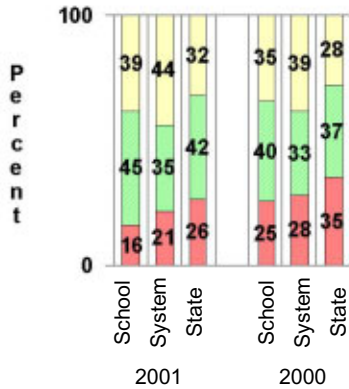
CRITERION-REFERENCED ASSESSMENTS

Criterion-Referenced Competency Tests (CRCTs)

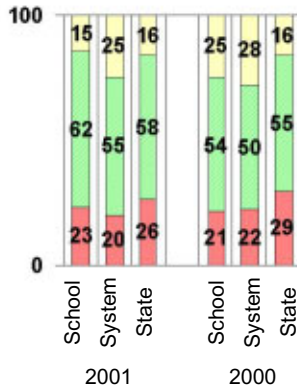
Percentage of Students Scoring in the Indicated Achievement Levels

Each chart reflects data for two years of testing.

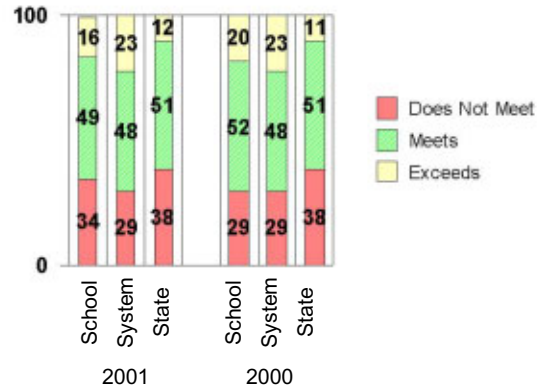
Grade 4 Reading



Grade 4 Language Arts



Grade 4 Mathematics



PERFORMANCE ASSESSMENTS

Grade 5 Writing Assessment

Percent at Developmental Stages:	2000-2001			1999-2000			1998-99		
	School	System	State	School	System	State	School	System	State
Stage 1: The Emerging Writer	0%	1%	1%	0%	1%	1%	0%	0%	1%
Stage 2: The Developing Writer	0%	2%	2%	2%	3%	2%	0%	2%	2%
Stage 3: The Focusing Writer	18%	14%	17%	9%	16%	19%	15%	14%	19%
Stage 4: The Experimenting Writer	37%	34%	42%	46%	38%	41%	28%	35%	41%
Stage 5: The Engaging Writer	34%	32%	29%	29%	29%	27%	24%	31%	27%
Stage 6: The Extending Writer	11%	17%	9%	14%	14%	9%	33%	18%	11%

2000-2001 Georgia Public Education Report Card

Fulton County

Spalding Drive Elementary School

CERTIFIED PERSONNEL DATA

		Administrators	Support Personnel	PK-12 Teachers
Positions	Number	2.32	4.73	41.97
	Average Contract Days	233.02	193.80	190.00
Personnel	Full-time	2	4	40
	Part-time	8	5	5
Gender	Male	1	2	3
	Female	9	7	42
Certificate Level	4 Yr Bachelor's	4	1	28
	5 Yr Master's	4	5	16
	6 Yr Specialist's	2	3	1
	7 Yr Doctoral	0	0	0
	Other *	0	0	0
Years Experience	<1	1	2	4
	1-10	3	5	23
	11-20	2	1	9
	21-30	3	1	8
	>30	1	0	1
	Average	15.70	6.56	10.44

* Includes One- and Two-Year Vocational Certificates.

ACCREDITATION DATA

Accredited by Southern Association of Colleges and Schools (SACS):
Elementary/Middle Commission

AWARDS/RECOGNITION DATA

Schools in Georgia may receive recognition in the following programs:

- Charter School
- Pay for Performance Program
- Georgia School of Excellence
- National Blue Ribbon School

Spalding Drive Elementary School did not receive recognition in any of these programs during the 2000-2001 school year.

For more information about these programs, contact your school principal or the school system central office.