

2000-2001 Georgia Public Education Report Card

Fulton County

S. L. Lewis Elementary School - 6600273

Grade Range - PK-5

The Georgia Public Education Report Card is designed to assist systems and schools in educational improvement. This report card contains a variety of data elements. An explanation of the terms is provided as a companion to the report card data. Please refer to the definitions for the most effective use of the reported data.

STUDENT DATA

Total Enrollment, by Race/Ethnicity and Gender

Total		Black	White	Hispanic	Asian	American Indian	Multi-Racial	Male	Female
K-5:	491	465 94.7%	2 0.4%	2 0.4%	2 0.4%	3 0.6%	17 3.5%	258 52.5%	233 47.5%
PK:	60	58 96.7%	0 0.0%	0 0.0%	0 0.0%	0 0.0%	2 3.3%	34 56.7%	26 43.3%

Enrollment in Selected Programs

Program	Program Enrollment	% of Student Population
Gifted (Grades K-12)	0	0.0%
Alternative Programs (Grades K-12)	0	0.0%

Enrollment in Compensatory Programs

Program	Program Enrollment	% of Student Population
Special Education (Grades K-12) (PK)	104 8	21.2% N/A
English to Speakers of Other Languages (ESOL) (Grades K-12)	0	0.0%
Early Intervention Program (EIP) (Grades K-3)	145	48.0%
Remedial Education (Grades 4-5, 9-12)	58	30.7%
Title I (Grades K-12)	This School has a Schoolwide Title I Program.	

Students Eligible to Receive Free/Reduced-price Lunches

	Number	Percent
School	410	74.4%
System	21,659	31.6%

Dropout Rate *

	Number	Percent
School	N/A	N/A
System	N/A	N/A

* - Dropouts are not reported for grades PK-5.

Retained Students, by Race/Ethnicity and Gender

Total	Black	White	Hispanic	Asian	American Indian	Multi-Racial	Male	Female
7	7 100.0%	0 0.0%	0 0.0%	0 0.0%	0 0.0%	0 0.0%	6 85.7%	1 14.3%

2000-2001 Georgia Public Education Report Card

Fulton County

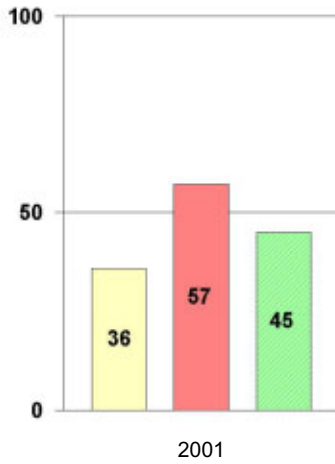
S. L. Lewis Elementary School

NORM-REFERENCED ASSESSMENTS

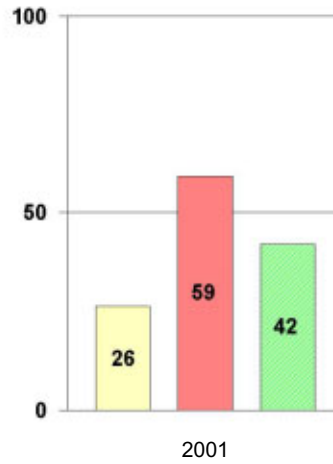
Stanford 9 Tests, Grade 3

Each chart reflects data for one year of testing.

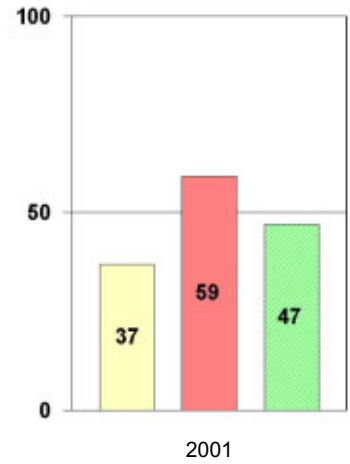
Total Reading



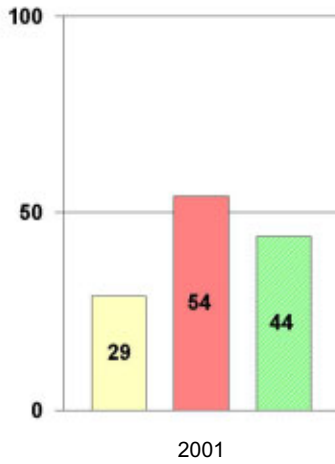
Total Mathematics



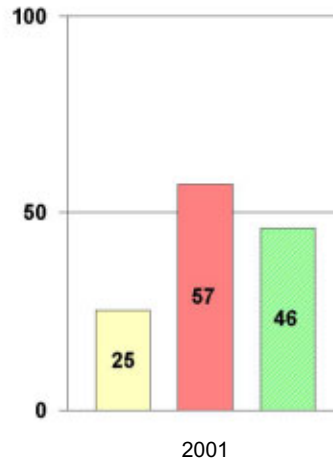
Language



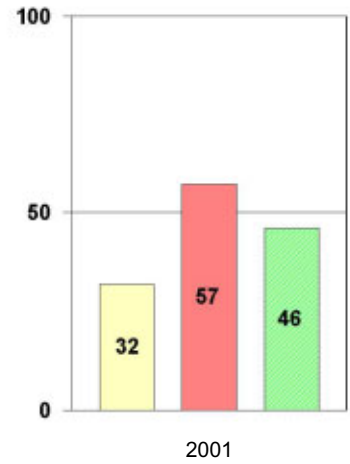
Science



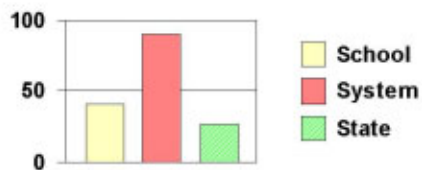
Social Science



Complete Battery



Legend



2000-2001 Georgia Public Education Report Card

Fulton County

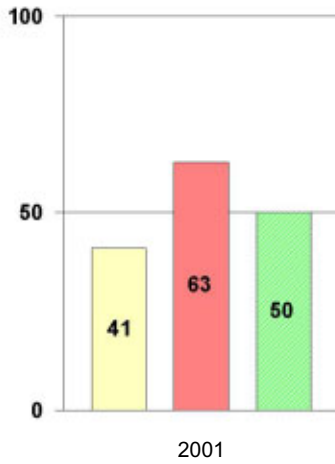
S. L. Lewis Elementary School

NORM-REFERENCED ASSESSMENTS

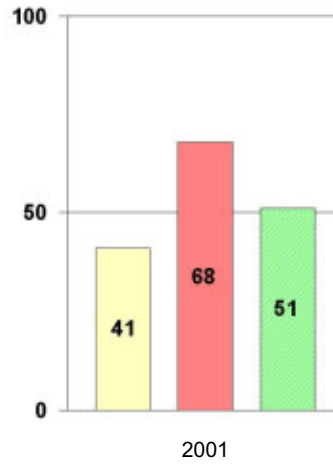
Stanford 9 Tests, Grade 5

Each chart reflects data for one year of testing.

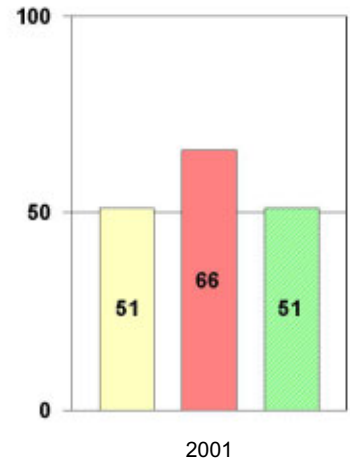
Total Reading



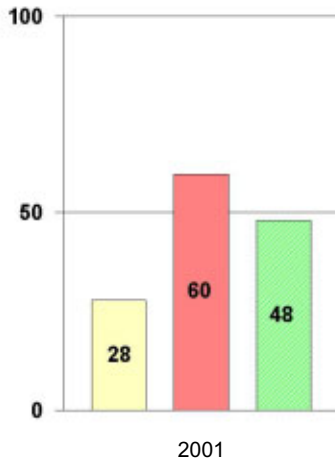
Total Mathematics



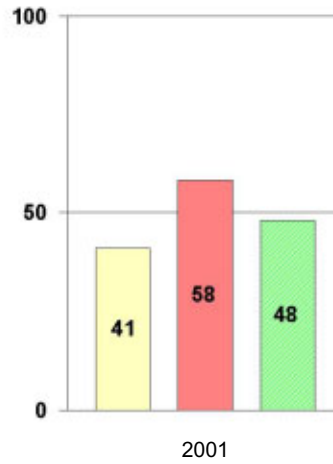
Language



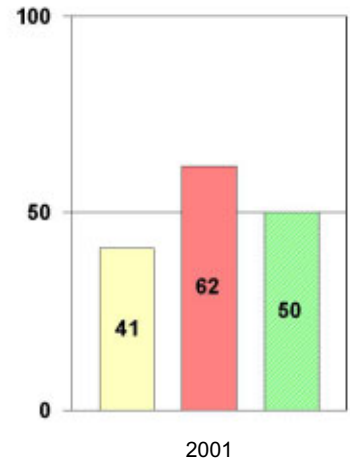
Science



Social Science



Complete Battery



Legend



2000-2001 Georgia Public Education Report Card

Fulton County

S. L. Lewis Elementary School

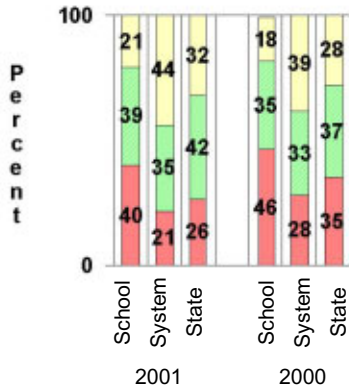
CRITERION-REFERENCED ASSESSMENTS

Criterion-Referenced Competency Tests (CRCTs)

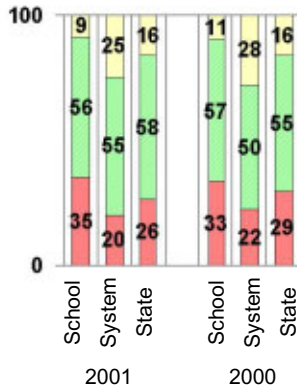
Percentage of Students Scoring in the Indicated Achievement Levels

Each chart reflects data for two years of testing.

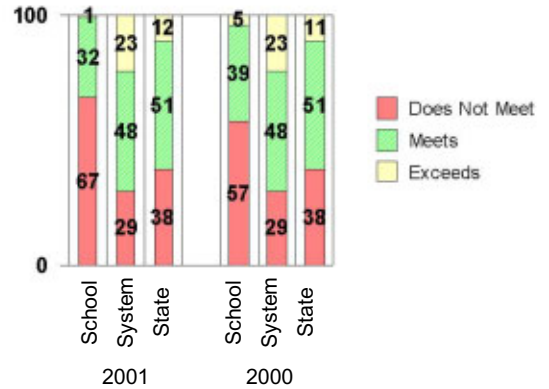
Grade 4 Reading



Grade 4 Language Arts



Grade 4 Mathematics



PERFORMANCE ASSESSMENTS

Grade 5 Writing Assessment

Percent at Developmental Stages:	2000-2001			1999-2000			1998-99		
	School	System	State	School	System	State	School	System	State
Stage 1: The Emerging Writer	3%	1%	1%	4%	1%	1%	0%	0%	1%
Stage 2: The Developing Writer	9%	2%	2%	2%	3%	2%	3%	2%	2%
Stage 3: The Focusing Writer	23%	14%	17%	25%	16%	19%	16%	14%	19%
Stage 4: The Experimenting Writer	35%	34%	42%	51%	38%	41%	51%	35%	41%
Stage 5: The Engaging Writer	28%	32%	29%	15%	29%	27%	25%	31%	27%
Stage 6: The Extending Writer	2%	17%	9%	4%	14%	9%	5%	18%	11%

2000-2001 Georgia Public Education Report Card

Fulton County

S. L. Lewis Elementary School

CERTIFIED PERSONNEL DATA

		Administrators	Support Personnel	PK-12 Teachers
Positions	Number	2.31	4.87	39.57
	Average Contract Days	233.40	195.86	190.38
Personnel	Full-time	2	3	38
	Part-time	8	6	4
Gender	Male	0	1	7
	Female	10	8	35
Certificate Level	4 Yr Bachelor's	3	1	17
	5 Yr Master's	6	6	24
	6 Yr Specialist's	1	2	1
	7 Yr Doctoral	0	0	0
	Other *	0	0	0
Years Experience	<1	0	0	6
	1-10	2	3	16
	11-20	6	1	9
	21-30	2	5	10
	>30	0	0	1
	Average	16.50	16.11	12.02

* Includes One- and Two-Year Vocational Certificates.

ACCREDITATION DATA

Accredited by Southern Association of Colleges and Schools (SACS):
Elementary/Middle Commission

AWARDS/RECOGNITION DATA

Schools in Georgia may receive recognition in the following programs:

- Charter School
- Pay for Performance Program
- Georgia School of Excellence
- National Blue Ribbon School

S. L. Lewis Elementary School did not receive recognition in any of these programs during the 2000-2001 school year.

For more information about these programs, contact your school principal or the school system central office.