

2000-2001 Georgia Public Education Report Card

Fulton County

Shakerag Elementary School - 6600398

Grade Range - PK-5

The Georgia Public Education Report Card is designed to assist systems and schools in educational improvement. This report card contains a variety of data elements. An explanation of the terms is provided as a companion to the report card data. Please refer to the definitions for the most effective use of the reported data.

STUDENT DATA

Total Enrollment, by Race/Ethnicity and Gender

Total	Black	White	Hispanic	Asian	American Indian	Multi-Racial	Male	Female
K-5: 896	44 4.9%	662 73.9%	9 1.0%	163 18.2%	3 0.3%	15 1.7%	443 49.4%	453 50.6%
PK: 43	3 7.0%	26 60.5%	1 2.3%	12 27.9%	0 0.0%	1 2.3%	20 46.5%	23 53.5%

Enrollment in Selected Programs

Program	Program Enrollment	% of Student Population
Gifted (Grades K-12)	57	6.4%
Alternative Programs (Grades K-12)	0	0.0%

Enrollment in Compensatory Programs

Program	Program Enrollment	% of Student Population
Special Education (Grades K-12) (PK)	99 6	11.0% N/A
English to Speakers of Other Languages (ESOL) (Grades K-12)	0	0.0%
Early Intervention Program (EIP) (Grades K-3)	0	0.0%
Remedial Education (Grades 4-5, 9-12)	44	14.1%
Title I (Grades K-12)	This School has no Title I Program.	

Students Eligible to Receive Free/Reduced-price Lunches

	Number	Percent
School	12	1.3%
System	21,659	31.6%

Dropout Rate *

	Number	Percent
School	N/A	N/A
System	N/A	N/A

* - Dropouts are not reported for grades PK-5.

Retained Students, by Race/Ethnicity and Gender

Total	Black	White	Hispanic	Asian	American Indian	Multi-Racial	Male	Female
9	0 0.0%	9 100.0%	0 0.0%	0 0.0%	0 0.0%	0 0.0%	5 55.6%	4 44.4%

2000-2001 Georgia Public Education Report Card

Fulton County

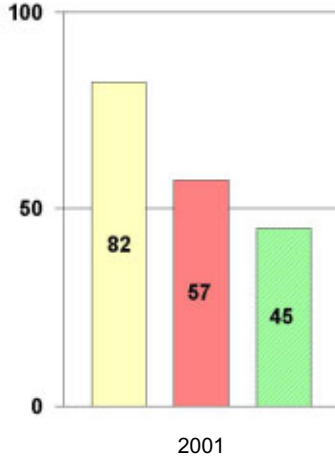
Shakerag Elementary School

NORM-REFERENCED ASSESSMENTS

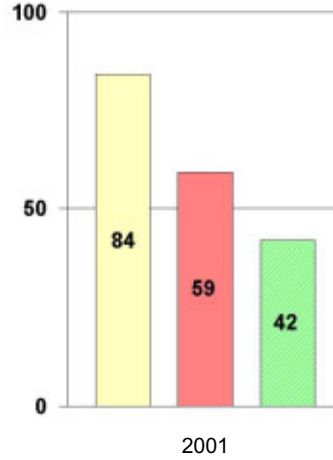
Stanford 9 Tests, Grade 3

Each chart reflects data for one year of testing.

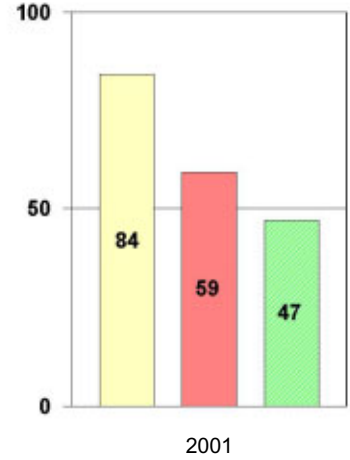
Total Reading



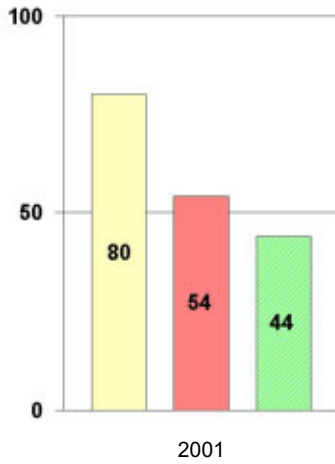
Total Mathematics



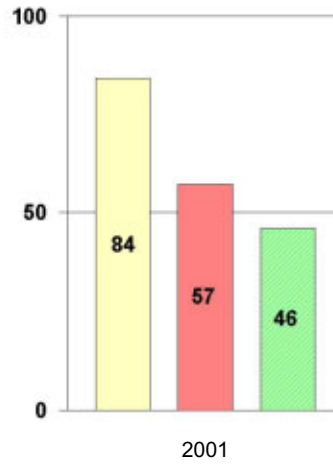
Language



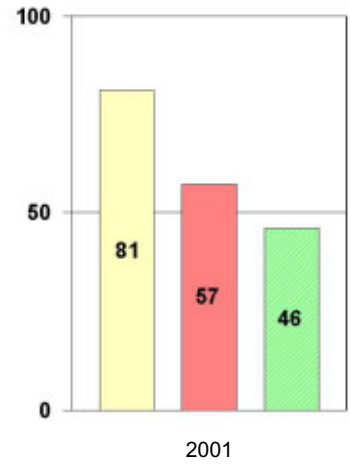
Science



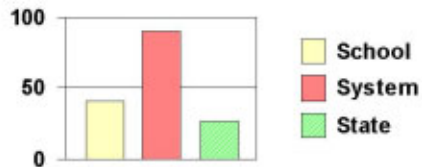
Social Science



Complete Battery



Legend



2000-2001 Georgia Public Education Report Card

Fulton County

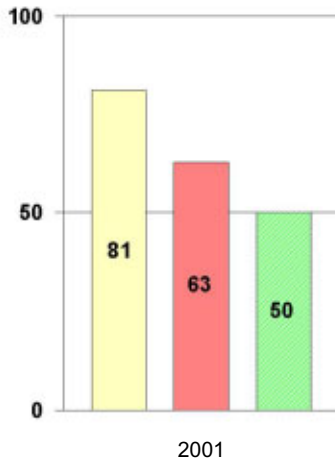
Shakerag Elementary School

NORM-REFERENCED ASSESSMENTS

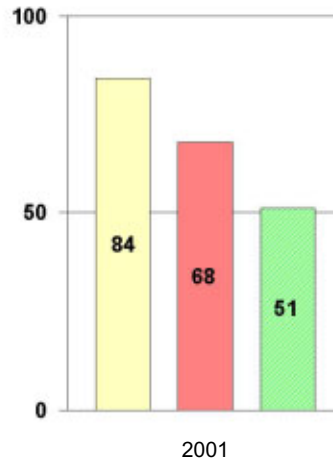
Stanford 9 Tests, Grade 5

Each chart reflects data for one year of testing.

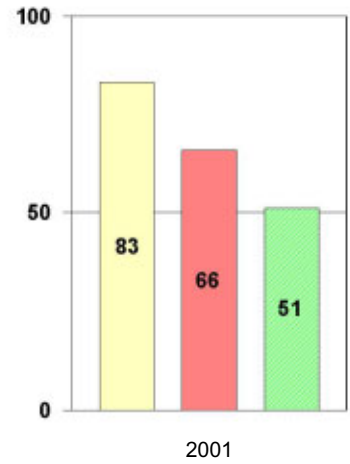
Total Reading



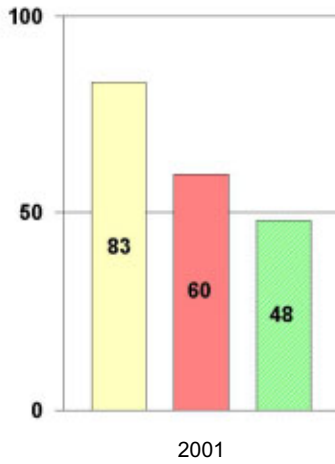
Total Mathematics



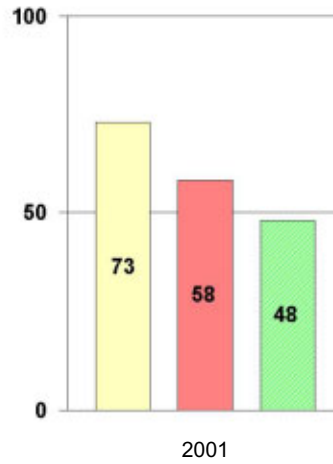
Language



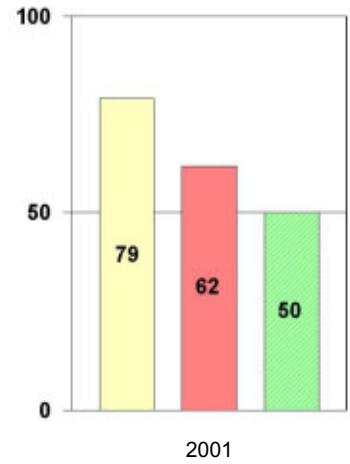
Science



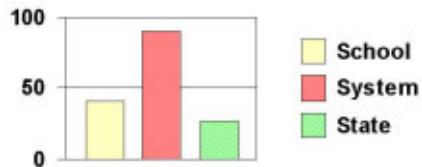
Social Science



Complete Battery



Legend



2000-2001 Georgia Public Education Report Card

Fulton County Shakerag Elementary School

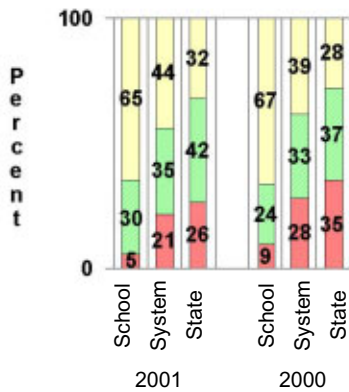
CRITERION-REFERENCED ASSESSMENTS

Criterion-Referenced Competency Tests (CRCTs)

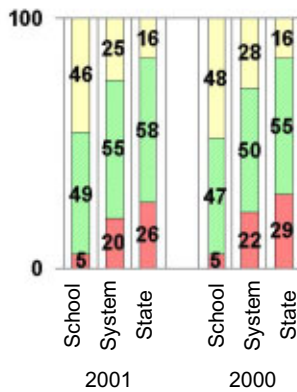
Percentage of Students Scoring in the Indicated Achievement Levels

Each chart reflects data for two years of testing.

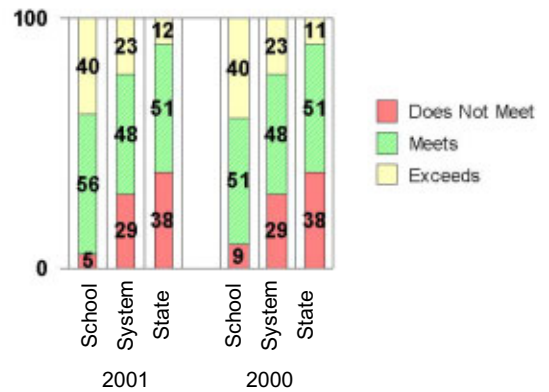
Grade 4 Reading



Grade 4 Language Arts



Grade 4 Mathematics



PERFORMANCE ASSESSMENTS

Grade 5 Writing Assessment

Percent at Developmental Stages:	2000-2001			1999-2000			1998-99		
	School	System	State	School	System	State	School	System	State
Stage 1: The Emerging Writer	0%	1%	1%	1%	1%	1%	0%	0%	1%
Stage 2: The Developing Writer	0%	2%	2%	1%	3%	2%	1%	2%	2%
Stage 3: The Focusing Writer	6%	14%	17%	3%	16%	19%	7%	14%	19%
Stage 4: The Experimenting Writer	21%	34%	42%	36%	38%	41%	34%	35%	41%
Stage 5: The Engaging Writer	42%	32%	29%	40%	29%	27%	39%	31%	27%
Stage 6: The Extending Writer	31%	17%	9%	19%	14%	9%	20%	18%	11%

2000-2001 Georgia Public Education Report Card

Fulton County

Shakerag Elementary School

CERTIFIED PERSONNEL DATA

		Administrators	Support Personnel	PK-12 Teachers
Positions	Number	2.38	5.66	52.33
	Average Contract Days	232.17	195.37	190.29
Personnel	Full-time	2	4	50
	Part-time	9	4	8
Gender	Male	1	0	5
	Female	10	8	53
Certificate Level	4 Yr Bachelor's	2	0	36
	5 Yr Master's	6	5	20
	6 Yr Specialist's	2	3	0
	7 Yr Doctoral	1	0	2
	Other *	0	0	0
Years Experience	<1	0	1	5
	1-10	5	0	30
	11-20	2	2	12
	21-30	4	5	10
	>30	0	0	1
	Average	13.73	20.50	10.19

* Includes One- and Two-Year Vocational Certificates.

ACCREDITATION DATA

Accredited by Southern Association of Colleges and Schools (SACS):
Elementary/Middle Commission

AWARDS/RECOGNITION DATA

Schools in Georgia may receive recognition in the following programs:

- Charter School
- Pay for Performance Program
- Georgia School of Excellence
- National Blue Ribbon School

Shakerag Elementary School did not receive recognition in any of these programs during the 2000-2001 school year.

For more information about these programs, contact your school principal or the school system central office.