

# 2000-2001 Georgia Public Education Report Card

## Fulton County

### Lee Elementary School - 6603058

Grade Range - PK-5

The Georgia Public Education Report Card is designed to assist systems and schools in educational improvement. This report card contains a variety of data elements. An explanation of the terms is provided as a companion to the report card data. Please refer to the definitions for the most effective use of the reported data.

#### STUDENT DATA

##### Total Enrollment, by Race/Ethnicity and Gender

Total	Black	White	Hispanic	Asian	American Indian	Multi-Racial	Male	Female
K-5: 517	505 97.7%	5 1.0%	3 0.6%	2 0.4%	0 0.0%	2 0.4%	273 52.8%	244 47.2%
PK: 34	33 97.1%	1 2.9%	0 0.0%	0 0.0%	0 0.0%	0 0.0%	17 50.0%	17 50.0%

##### Enrollment in Selected Programs

Program	Program Enrollment	% of Student Population
Gifted (Grades K-12)	9	1.7%
Alternative Programs (Grades K-12)	0	0.0%

##### Enrollment in Compensatory Programs

Program	Program Enrollment	% of Student Population
Special Education (Grades K-12) (PK)	62 3	12.0% N/A
English to Speakers of Other Languages (ESOL) (Grades K-12)	0	0.0%
Early Intervention Program (EIP) (Grades K-3)	117	33.1%
Remedial Education (Grades 4-5, 9-12)	49	29.9%
Title I (Grades K-12)	This School has a Schoolwide Title I Program.	

##### Students Eligible to Receive Free/Reduced-price Lunches

	Number	Percent
School	495	89.8%
System	21,659	31.6%

##### Dropout Rate \*

	Number	Percent
School	N/A	N/A
System	N/A	N/A

\* - Dropouts are not reported for grades PK-5.

##### Retained Students, by Race/Ethnicity and Gender

Total	Black	White	Hispanic	Asian	American Indian	Multi-Racial	Male	Female
24	24 100.0%	0 0.0%	0 0.0%	0 0.0%	0 0.0%	0 0.0%	11 45.8%	13 54.2%

# 2000-2001 Georgia Public Education Report Card

## Fulton County

### Lee Elementary School

#### NORM-REFERENCED ASSESSMENTS

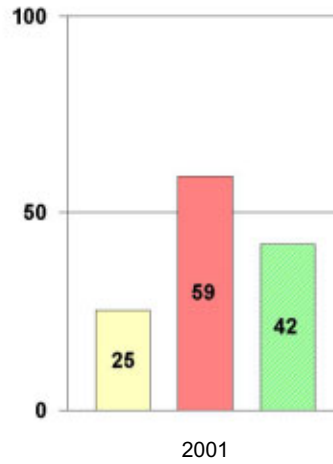
##### Stanford 9 Tests, Grade 3

Each chart reflects data for one year of testing.

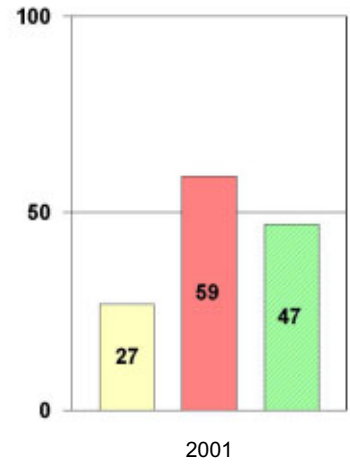
###### Total Reading



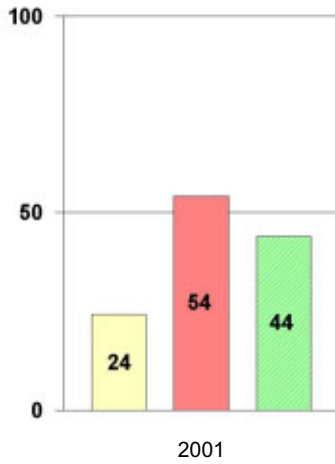
###### Total Mathematics



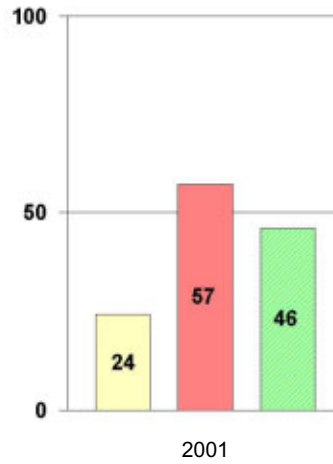
###### Language



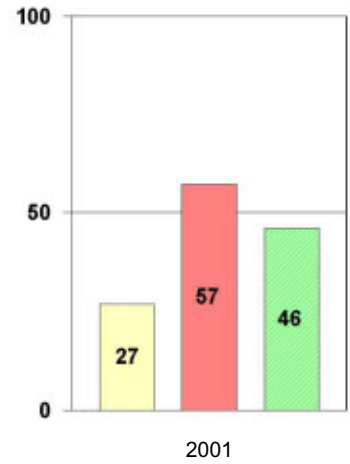
###### Science



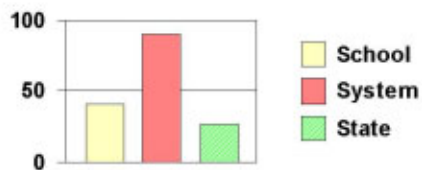
###### Social Science



###### Complete Battery



#### Legend



# 2000-2001 Georgia Public Education Report Card

## Fulton County

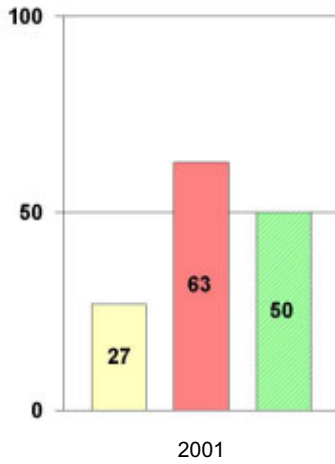
### Lee Elementary School

#### NORM-REFERENCED ASSESSMENTS

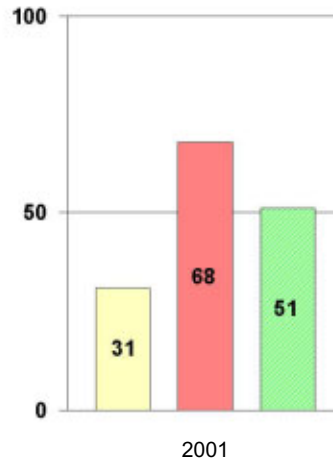
##### Stanford 9 Tests, Grade 5

Each chart reflects data for one year of testing.

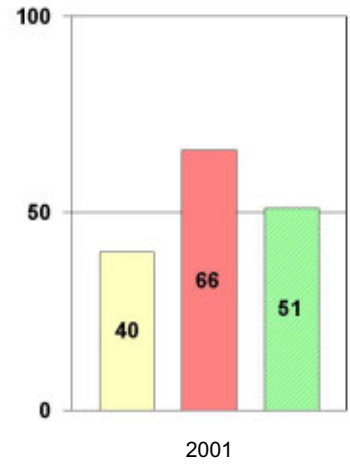
**Total Reading**



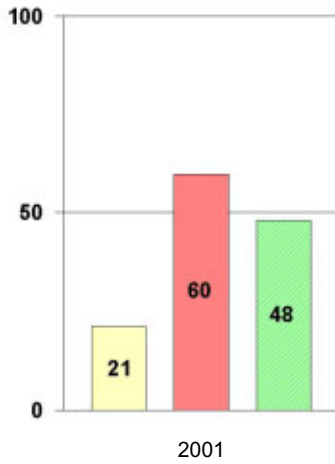
**Total Mathematics**



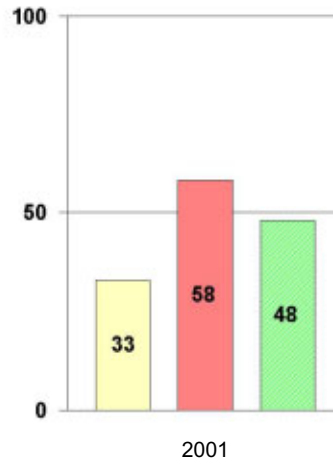
**Language**



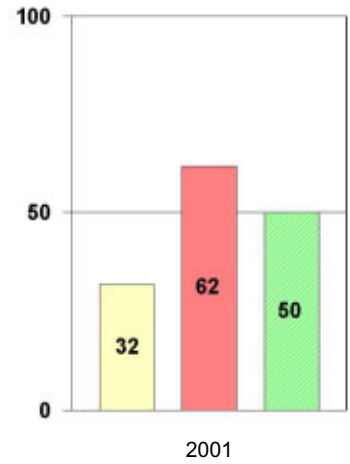
**Science**



**Social Science**



**Complete Battery**



#### Legend



# 2000-2001 Georgia Public Education Report Card

## Fulton County Lee Elementary School

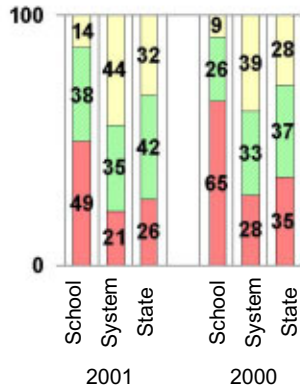
### CRITERION-REFERENCED ASSESSMENTS

#### Criterion-Referenced Competency Tests (CRCTs)

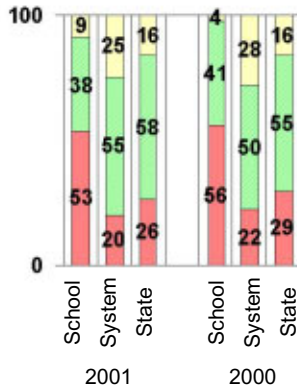
Percentage of Students Scoring in the Indicated Achievement Levels

Each chart reflects data for two years of testing.

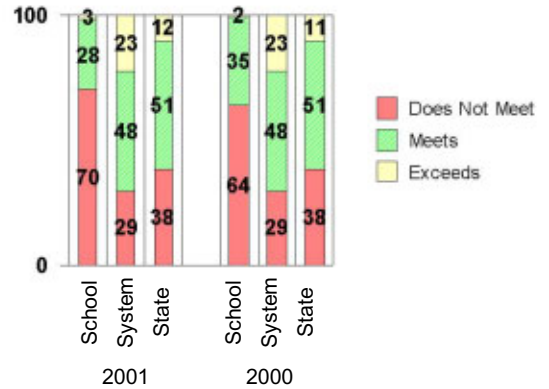
Grade 4 Reading



Grade 4 Language Arts



Grade 4 Mathematics



### PERFORMANCE ASSESSMENTS

#### Grade 5 Writing Assessment

Percent at Developmental Stages:	2000-2001			1999-2000			1998-99		
	School	System	State	School	System	State	School	System	State
<b>Stage 1:</b> The Emerging Writer	1%	1%	1%	0%	1%	1%	0%	0%	1%
<b>Stage 2:</b> The Developing Writer	9%	2%	2%	3%	3%	2%	2%	2%	2%
<b>Stage 3:</b> The Focusing Writer	28%	14%	17%	23%	16%	19%	25%	14%	19%
<b>Stage 4:</b> The Experimenting Writer	48%	34%	42%	48%	38%	41%	56%	35%	41%
<b>Stage 5:</b> The Engaging Writer	13%	32%	29%	19%	29%	27%	13%	31%	27%
<b>Stage 6:</b> The Extending Writer	1%	17%	9%	6%	14%	9%	4%	18%	11%

# 2000-2001 Georgia Public Education Report Card

## Fulton County

### Lee Elementary School

#### CERTIFIED PERSONNEL DATA

		Administrators	Support Personnel	PK-12 Teachers
Positions	Number	2.37	4.27	37.53
	Average Contract Days	232.40	195.75	190.40
Personnel	Full-time	2	2	36
	Part-time	9	6	3
Gender	Male	2	0	6
	Female	9	8	33
Certificate Level	4 Yr Bachelor's	5	0	18
	5 Yr Master's	4	6	18
	6 Yr Specialist's	1	2	3
	7 Yr Doctoral	1	0	0
	Other *	0	0	0
Years Experience	<1	0	1	4
	1-10	6	5	18
	11-20	2	1	7
	21-30	2	1	8
	>30	1	0	2
	Average	12.64	6.25	11.18

\* Includes One- and Two-Year Vocational Certificates.

#### ACCREDITATION DATA

Accredited by Southern Association of Colleges and Schools (SACS):  
Elementary/Middle Commission

#### AWARDS/RECOGNITION DATA

Schools in Georgia may receive recognition in the following programs:

- Charter School
- Pay for Performance Program
- Georgia School of Excellence
- National Blue Ribbon School

Lee Elementary School did not receive recognition in any of these programs during the 2000-2001 school year.

For more information about these programs, contact your school principal or the school system central office.