

2000-2001 Georgia Public Education Report Card

Fulton County

Sandy Springs Middle School - 6600492

Grade Range - 6-8

The Georgia Public Education Report Card is designed to assist systems and schools in educational improvement. This report card contains a variety of data elements. An explanation of the terms is provided as a companion to the report card data. Please refer to the definitions for the most effective use of the reported data.

STUDENT DATA

Total Enrollment, by Race/Ethnicity and Gender

Total	Black	White	Hispanic	Asian	American Indian	Multi-Racial	Male	Female
6-8: 713	266 37.3%	330 46.3%	51 7.2%	37 5.2%	2 0.3%	27 3.8%	366 51.3%	347 48.7%

Enrollment in Selected Programs

Program	Program Enrollment	% of Student Population
Gifted (Grades K-12)	175	24.5%
Vocational Labs (Grades 9-12)	0	0.0%
Alternative Programs (Grades K-12)	1	0.1%

Enrollment in Compensatory Programs

Program	Program Enrollment	% of Student Population
Special Education (Grades K-12)	70	9.8%
(PK)	0	N/A
English to Speakers of Other Languages (ESOL) (Grades K-12)	65	9.1%
Title I (Grades K-12)	This School has no Title I Program.	

Students Eligible to Receive Free/Reduced-price Lunches

	Number	Percent
School	223	31.3%
System	21,659	31.6%

Dropout Rate for Grades 6-8

	Number	Percent
School	0	0.0%
System	44	0.2%

Retained Students, by Race/Ethnicity and Gender

Total	Black	White	Hispanic	Asian	American Indian	Multi-Racial	Male	Female
17	10 58.8%	5 29.4%	1 5.9%	0 0.0%	0 0.0%	1 5.9%	11 64.7%	6 35.3%

2000-2001 Georgia Public Education Report Card

Fulton County

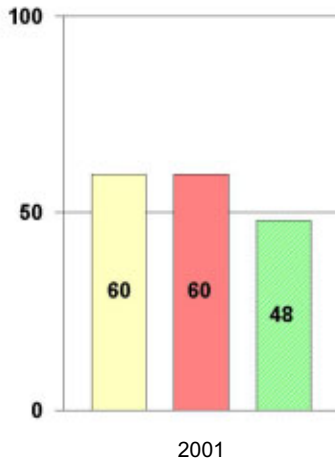
Sandy Springs Middle School

NORM-REFERENCED ASSESSMENTS

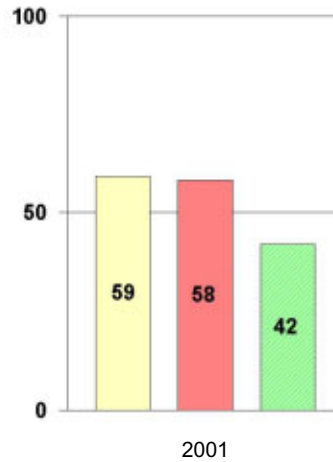
Stanford 9 Tests, Grade 8

Each chart reflects data for one year of testing.

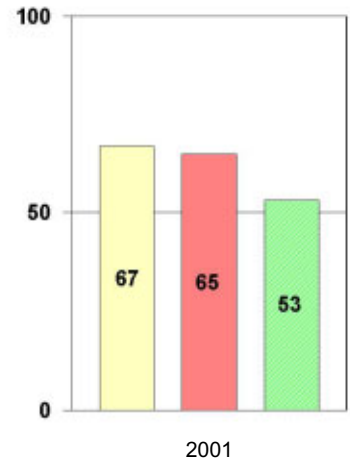
Total Reading



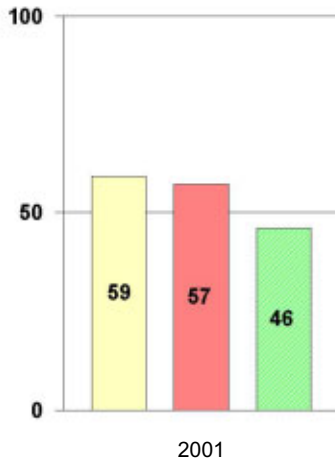
Total Mathematics



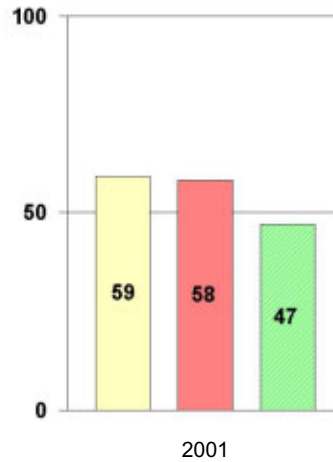
Language



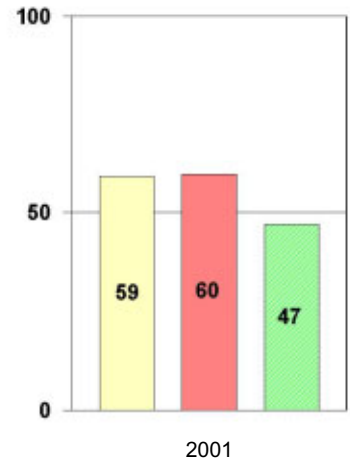
Science



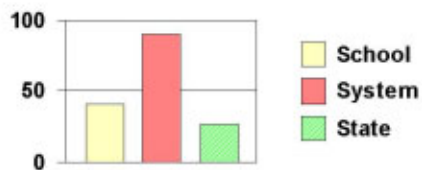
Social Science



Complete Battery



Legend



2000-2001 Georgia Public Education Report Card

Fulton County

Sandy Springs Middle School

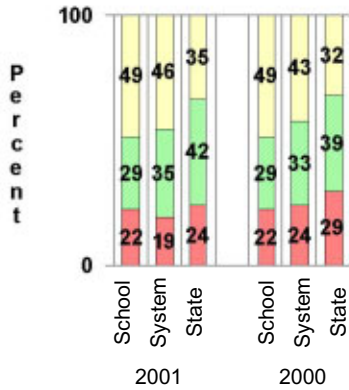
CRITERION-REFERENCED ASSESSMENTS

Criterion-Referenced Competency Tests (CRCTs)

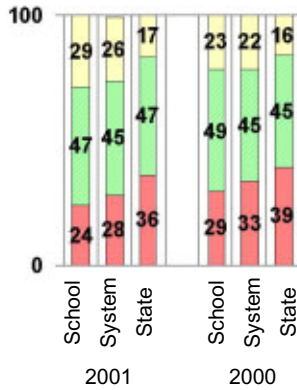
Percentage of Students Scoring in the Indicated Achievement Levels

Each chart reflects data for two years of testing.

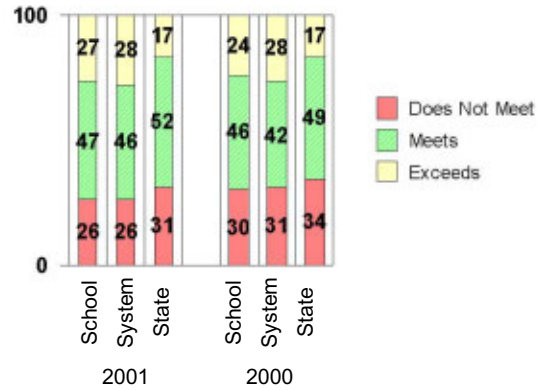
Grade 6 Reading



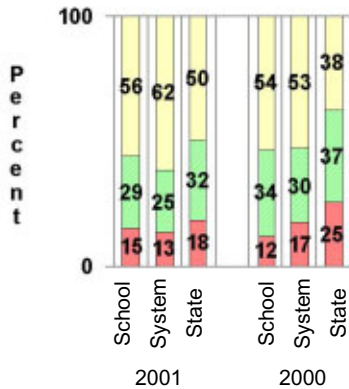
Grade 6 Language Arts



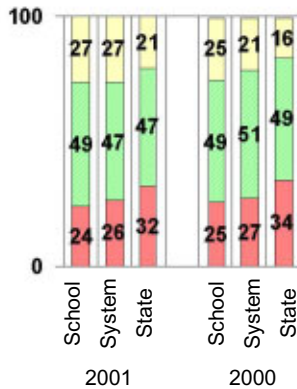
Grade 6 Mathematics



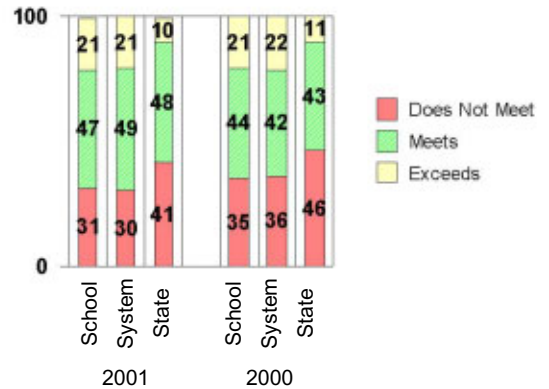
Grade 8 Reading



Grade 8 Language Arts



Grade 8 Mathematics



PERFORMANCE ASSESSMENTS

Grade 8 Writing Assessment

		2000-2001			1999-2000		
Categories of Scaled Scores:		School	System	State	School	System	State
Not on Target	(300-348)	13%	12%	17%	18%	19%	28%
On Target	(349-367)	67%	67%	72%	58%	59%	58%
Exceeds Target	(368-400)	20%	20%	12%	25%	22%	13%
Average Scaled Score: (Range 300-400)		359	360	357	359	359	354

2000-2001 Georgia Public Education Report Card

Fulton County

Sandy Springs Middle School

CERTIFIED PERSONNEL DATA

		Administrators	Support Personnel	PK-12 Teachers
Positions	Number	3.84	5.87	52.58
	Average Contract Days	229.01	197.02	190.00
Personnel	Full-time	3	4	52
	Part-time	18	13	1
Gender	Male	3	4	8
	Female	18	13	45
Certificate Level	4 Yr Bachelor's	11	8	29
	5 Yr Master's	6	7	21
	6 Yr Specialist's	3	2	3
	7 Yr Doctoral	1	0	0
	Other *	0	0	0
Years Experience	<1	2	0	4
	1-10	9	10	27
	11-20	5	4	13
	21-30	5	3	8
	>30	0	0	1
	Average	12.24	11.47	10.94

* Includes One- and Two-Year Vocational Certificates.

ACCREDITATION DATA

Accredited by Southern Association of Colleges and Schools (SACS):
Elementary/Middle Commission

AWARDS/RECOGNITION DATA

Schools in Georgia may receive recognition in the following programs:

- Charter School
- Pay for Performance Program
- Georgia School of Excellence
- National Blue Ribbon School

Sandy Springs Middle School did not receive recognition in any of these programs during the 2000-2001 school year.

For more information about these programs, contact your school principal or the school system central office.