

2000-2001 Georgia Public Education Report Card

Fulton County

Roswell North Elementary School - 6601067

Grade Range - PK-5

The Georgia Public Education Report Card is designed to assist systems and schools in educational improvement. This report card contains a variety of data elements. An explanation of the terms is provided as a companion to the report card data. Please refer to the definitions for the most effective use of the reported data.

STUDENT DATA

Total Enrollment, by Race/Ethnicity and Gender

Total	Black	White	Hispanic	Asian	American Indian	Multi-Racial	Male	Female
K-5: 834	108 12.9%	524 62.8%	136 16.3%	37 4.4%	0 0.0%	29 3.5%	410 49.2%	424 50.8%
PK: 43	6 14.0%	22 51.2%	11 25.6%	3 7.0%	0 0.0%	1 2.3%	23 53.5%	20 46.5%

Enrollment in Selected Programs

Program	Program Enrollment	% of Student Population
Gifted (Grades K-12)	31	3.7%
Alternative Programs (Grades K-12)	0	0.0%

Enrollment in Compensatory Programs

Program	Program Enrollment	% of Student Population
Special Education (Grades K-12) (PK)	127 5	15.2% N/A
English to Speakers of Other Languages (ESOL) (Grades K-12)	86	10.3%
Early Intervention Program (EIP) (Grades K-3)	115	21.7%
Remedial Education (Grades 4-5, 9-12)	49	16.2%
Title I (Grades K-12)	This School has no Title I Program.	

Students Eligible to Receive Free/Reduced-price Lunches

	Number	Percent
School	241	27.5%
System	21,659	31.6%

Dropout Rate *

	Number	Percent
School	N/A	N/A
System	N/A	N/A

* - Dropouts are not reported for grades PK-5.

Retained Students, by Race/Ethnicity and Gender

Total	Black	White	Hispanic	Asian	American Indian	Multi-Racial	Male	Female
16	5 31.3%	6 37.5%	4 25.0%	0 0.0%	0 0.0%	1 6.3%	10 62.5%	6 37.5%

2000-2001 Georgia Public Education Report Card

Fulton County

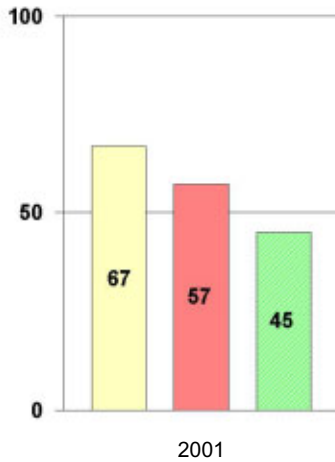
Roswell North Elementary School

NORM-REFERENCED ASSESSMENTS

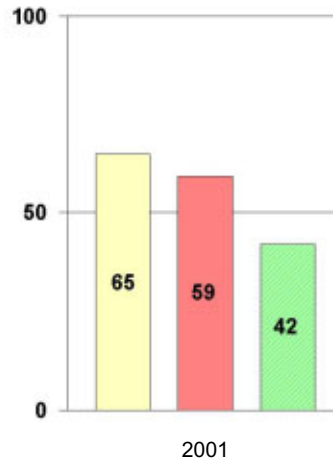
Stanford 9 Tests, Grade 3

Each chart reflects data for one year of testing.

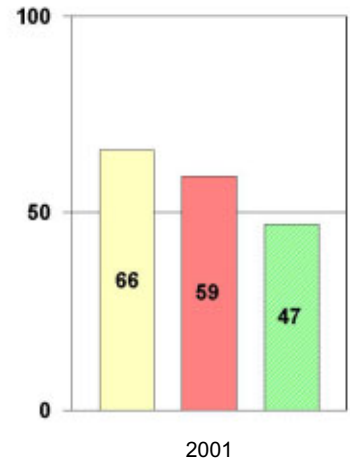
Total Reading



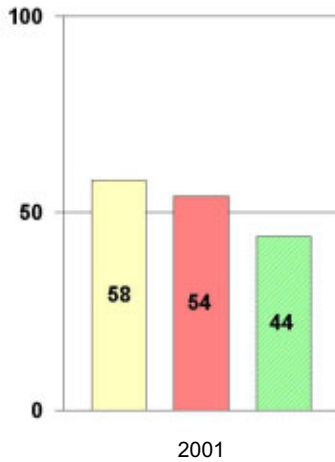
Total Mathematics



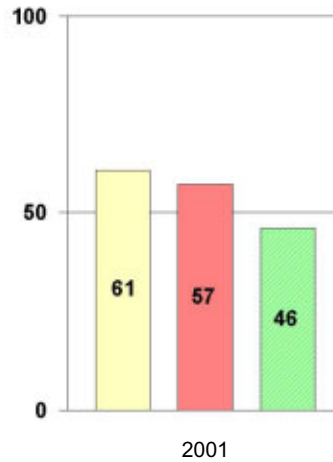
Language



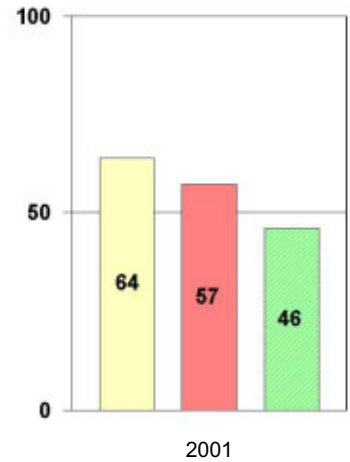
Science



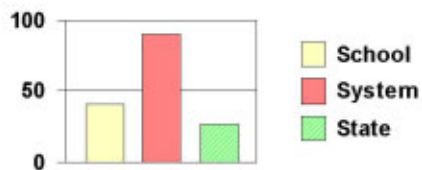
Social Science



Complete Battery



Legend



2000-2001 Georgia Public Education Report Card

Fulton County

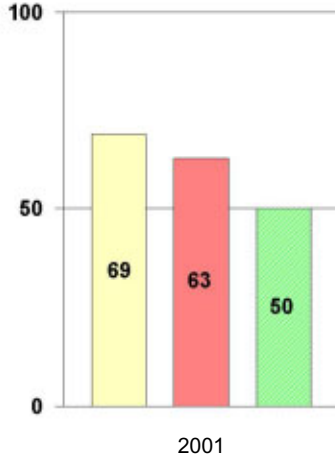
Roswell North Elementary School

NORM-REFERENCED ASSESSMENTS

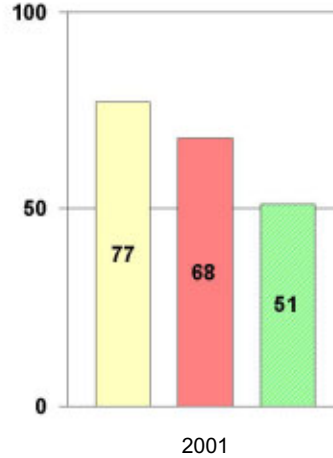
Stanford 9 Tests, Grade 5

Each chart reflects data for one year of testing.

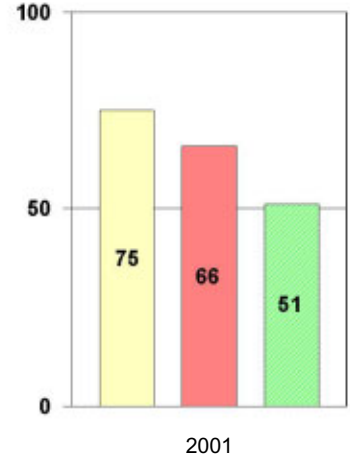
Total Reading



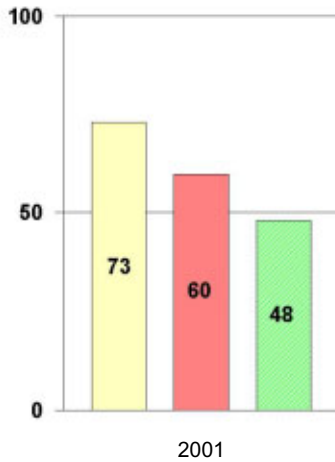
Total Mathematics



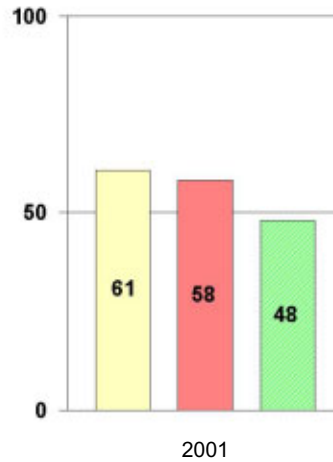
Language



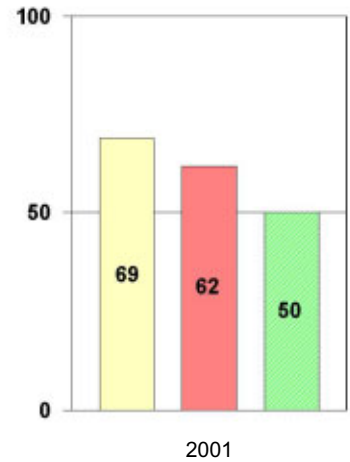
Science



Social Science



Complete Battery



Legend



2000-2001 Georgia Public Education Report Card

Fulton County

Roswell North Elementary School

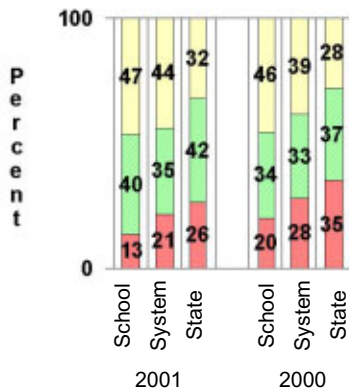
CRITERION-REFERENCED ASSESSMENTS

Criterion-Referenced Competency Tests (CRCTs)

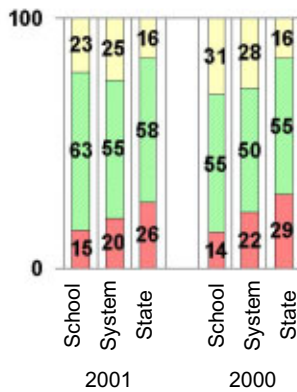
Percentage of Students Scoring in the Indicated Achievement Levels

Each chart reflects data for two years of testing.

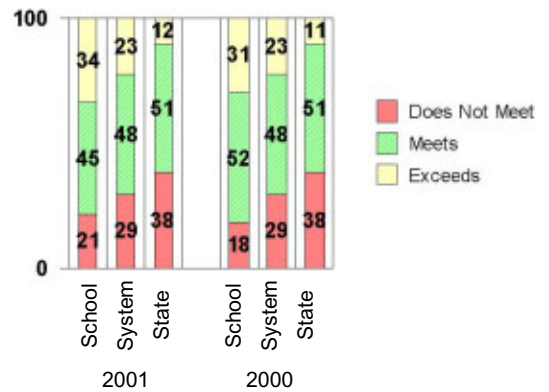
Grade 4 Reading



Grade 4 Language Arts



Grade 4 Mathematics



PERFORMANCE ASSESSMENTS

Grade 5 Writing Assessment

Percent at Developmental Stages:	2000-2001			1999-2000			1998-99		
	School	System	State	School	System	State	School	System	State
Stage 1: The Emerging Writer	1%	1%	1%	0%	1%	1%	1%	0%	1%
Stage 2: The Developing Writer	1%	2%	2%	1%	3%	2%	1%	2%	2%
Stage 3: The Focusing Writer	13%	14%	17%	20%	16%	19%	19%	14%	19%
Stage 4: The Experimenting Writer	35%	34%	42%	45%	38%	41%	48%	35%	41%
Stage 5: The Engaging Writer	34%	32%	29%	23%	29%	27%	22%	31%	27%
Stage 6: The Extending Writer	15%	17%	9%	11%	14%	9%	10%	18%	11%

2000-2001 Georgia Public Education Report Card

Fulton County

Roswell North Elementary School

CERTIFIED PERSONNEL DATA

		Administrators	Support Personnel	PK-12 Teachers
Positions	Number	2.35	7.95	57.81
	Average Contract Days	232.68	193.78	190.26
Personnel	Full-time	2	6	55
	Part-time	9	9	7
Gender	Male	0	3	3
	Female	11	12	59
Certificate Level	4 Yr Bachelor's	3	2	36
	5 Yr Master's	6	10	23
	6 Yr Specialist's	2	2	2
	7 Yr Doctoral	0	1	1
	Other *	0	0	0
Years Experience	<1	0	1	7
	1-10	2	5	26
	11-20	3	4	16
	21-30	5	5	12
	>30	1	0	1
	Average	18.91	14.13	11.48

* Includes One- and Two-Year Vocational Certificates.

ACCREDITATION DATA

Accredited by Southern Association of Colleges and Schools (SACS):
Elementary/Middle Commission

AWARDS/RECOGNITION DATA

Schools in Georgia may receive recognition in the following programs:

- Charter School
- Pay for Performance Program
- Georgia School of Excellence
- National Blue Ribbon School

Roswell North Elementary School did not receive recognition in any of these programs during the 2000-2001 school year.

For more information about these programs, contact your school principal or the school system central office.