

# 2000-2001 Georgia Public Education Report Card

## Fulton County

### River Eves Elementary School - 6600397

#### Grade Range - K-5

The Georgia Public Education Report Card is designed to assist systems and schools in educational improvement. This report card contains a variety of data elements. An explanation of the terms is provided as a companion to the report card data. Please refer to the definitions for the most effective use of the reported data.

#### STUDENT DATA

##### Total Enrollment, by Race/Ethnicity and Gender

Total	Black	White	Hispanic	Asian	American Indian	Multi-Racial	Male	Female	
K-5:	935	165	591	67	76	1	35	462	473
		17.6%	63.2%	7.2%	8.1%	0.1%	3.7%	49.4%	50.6%

##### Enrollment in Selected Programs

Program	Program Enrollment	% of Student Population
Gifted (Grades K-12)	63	6.7%
Alternative Programs (Grades K-12)	1	0.1%

##### Students Eligible to Receive Free/Reduced-price Lunches

	Number	Percent
School	141	15.1%
System	21,659	31.6%

##### Dropout Rate \*

	Number	Percent
School	N/A	N/A
System	N/A	N/A

\* - Dropouts are not reported for grades PK-5.

##### Enrollment in Compensatory Programs

Program	Program Enrollment	% of Student Population
Special Education (Grades K-12) (PK)	90 0	9.6% N/A
English to Speakers of Other Languages (ESOL) (Grades K-12)	61	6.5%
Early Intervention Program (EIP) (Grades K-3)	86	14.4%
Remedial Education (Grades 4-5, 9-12)	51	15.0%
Title I (Grades K-12)	This School has no Title I Program.	

##### Retained Students, by Race/Ethnicity and Gender

Total	Black	White	Hispanic	Asian	American Indian	Multi-Racial	Male	Female
14	4	8	2	0	0	0	8	6
	28.6%	57.1%	14.3%	0.0%	0.0%	0.0%	57.1%	42.9%

# 2000-2001 Georgia Public Education Report Card

## Fulton County

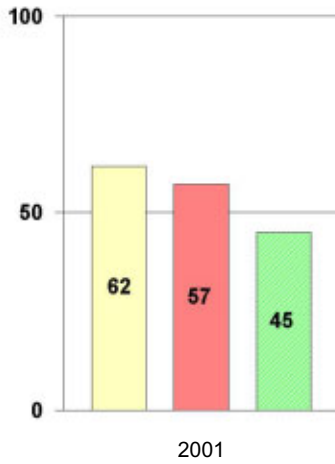
### River Eves Elementary School

#### NORM-REFERENCED ASSESSMENTS

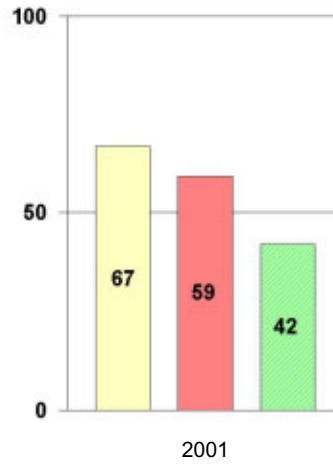
##### Stanford 9 Tests, Grade 3

Each chart reflects data for one year of testing.

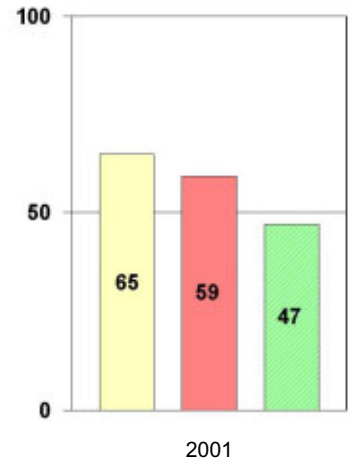
**Total Reading**



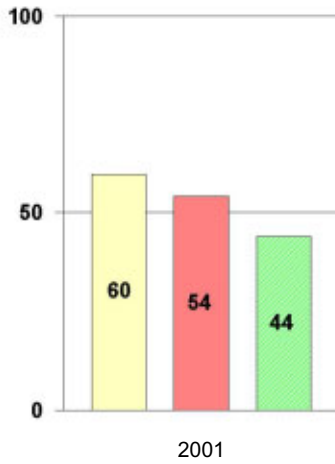
**Total Mathematics**



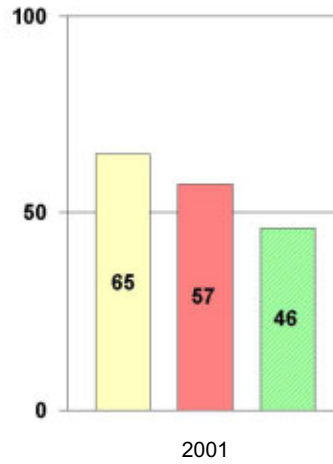
**Language**



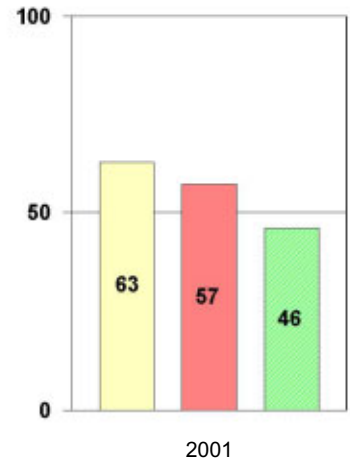
**Science**



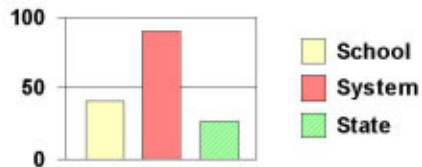
**Social Science**



**Complete Battery**



#### Legend



# 2000-2001 Georgia Public Education Report Card

## Fulton County

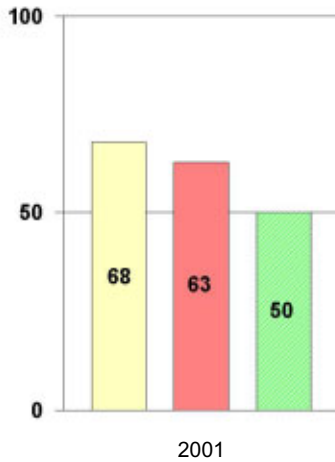
### River Eves Elementary School

#### NORM-REFERENCED ASSESSMENTS

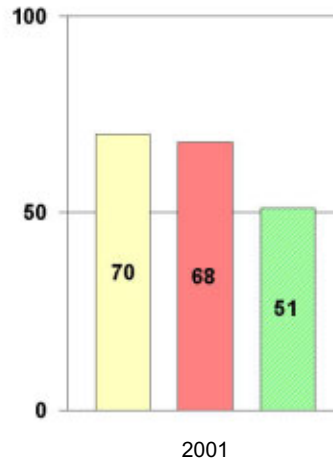
##### Stanford 9 Tests, Grade 5

Each chart reflects data for one year of testing.

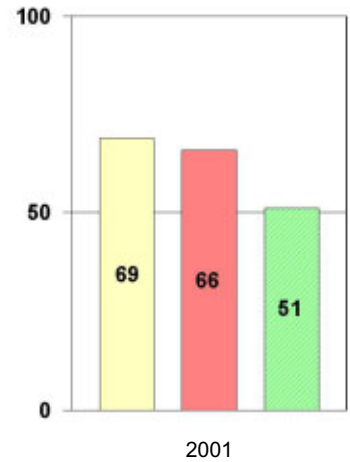
**Total Reading**



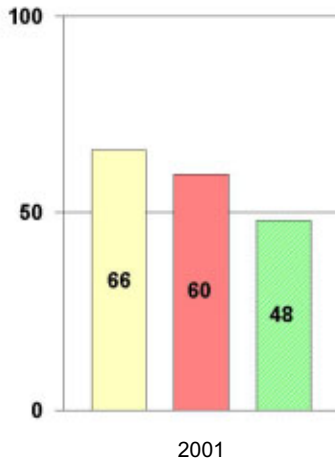
**Total Mathematics**



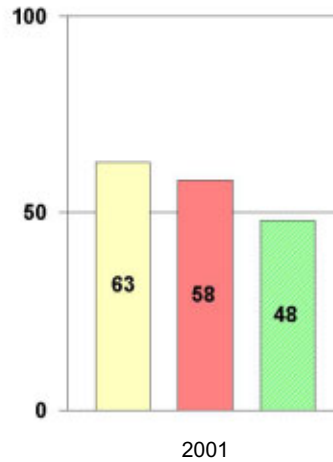
**Language**



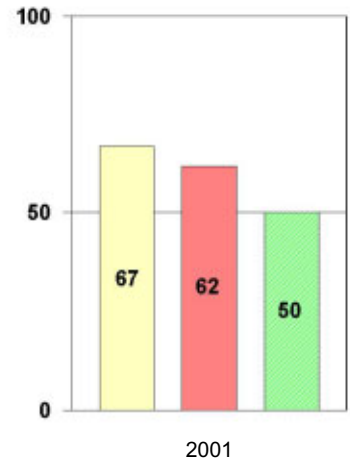
**Science**



**Social Science**



**Complete Battery**



#### Legend



# 2000-2001 Georgia Public Education Report Card

## Fulton County

### River Eves Elementary School

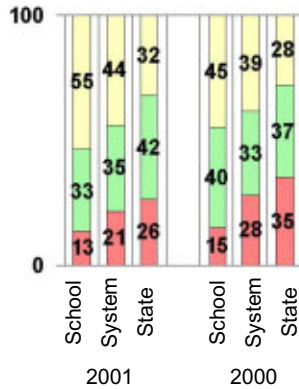
#### CRITERION-REFERENCED ASSESSMENTS

##### Criterion-Referenced Competency Tests (CRCTs)

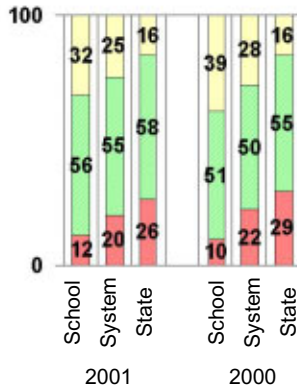
Percentage of Students Scoring in the Indicated Achievement Levels

Each chart reflects data for two years of testing.

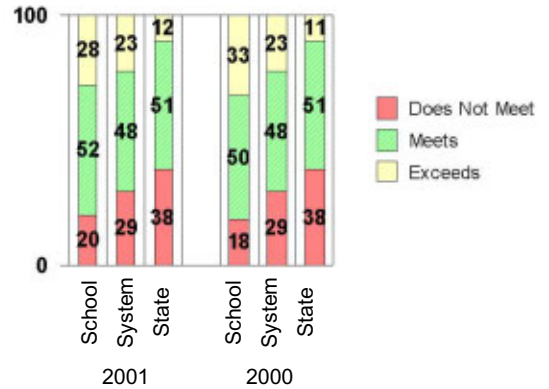
Grade 4 Reading



Grade 4 Language Arts



Grade 4 Mathematics



#### PERFORMANCE ASSESSMENTS

##### Grade 5 Writing Assessment

Percent at Developmental Stages:	2000-2001			1999-2000			1998-99		
	School	System	State	School	System	State	School	System	State
<b>Stage 1:</b> The Emerging Writer	0%	1%	1%	1%	1%	1%	0%	0%	1%
<b>Stage 2:</b> The Developing Writer	3%	2%	2%	0%	3%	2%	1%	2%	2%
<b>Stage 3:</b> The Focusing Writer	14%	14%	17%	13%	16%	19%	6%	14%	19%
<b>Stage 4:</b> The Experimenting Writer	31%	34%	42%	36%	38%	41%	29%	35%	41%
<b>Stage 5:</b> The Engaging Writer	33%	32%	29%	33%	29%	27%	37%	31%	27%
<b>Stage 6:</b> The Extending Writer	18%	17%	9%	17%	14%	9%	27%	18%	11%

# 2000-2001 Georgia Public Education Report Card

## Fulton County

### River Eves Elementary School

#### CERTIFIED PERSONNEL DATA

		Administrators	Support Personnel	PK-12 Teachers
Positions	Number	2.38	5.86	54.03
	Average Contract Days	232.05	195.19	190.28
Personnel	Full-time	2	3	50
	Part-time	8	8	9
Gender	Male	0	1	4
	Female	10	10	55
Certificate Level	4 Yr Bachelor's	6	2	37
	5 Yr Master's	2	7	20
	6 Yr Specialist's	2	1	2
	7 Yr Doctoral	0	1	0
	Other *	0	0	0
Years Experience	<1	0	0	8
	1-10	3	3	28
	11-20	3	7	14
	21-30	3	1	9
	>30	1	0	0
	Average	17.50	14.00	9.42

\* Includes One- and Two-Year Vocational Certificates.

#### ACCREDITATION DATA

Accredited by Southern Association of Colleges and Schools (SACS):  
Elementary/Middle Commission

#### AWARDS/RECOGNITION DATA

Schools in Georgia may receive recognition in the following programs:

- Charter School
- Pay for Performance Program
- Georgia School of Excellence
- National Blue Ribbon School

River Eves Elementary School did not receive recognition in any of these programs during the 2000-2001 school year.

For more information about these programs, contact your school principal or the school system central office.