

2000-2001 Georgia Public Education Report Card

Fulton County

Ridgeview Middle School - 6600286

Grade Range - 6-8

The Georgia Public Education Report Card is designed to assist systems and schools in educational improvement. This report card contains a variety of data elements. An explanation of the terms is provided as a companion to the report card data. Please refer to the definitions for the most effective use of the reported data.

STUDENT DATA

Total Enrollment, by Race/Ethnicity and Gender

Total	Black	White	Hispanic	Asian	American Indian	Multi-Racial	Male	Female
6-8: 556	123 22.1%	257 46.2%	136 24.5%	22 4.0%	0 0.0%	18 3.2%	277 49.8%	279 50.2%

Enrollment in Selected Programs

Program	Program Enrollment	% of Student Population
Gifted (Grades K-12)	152	27.3%
Vocational Labs (Grades 9-12)	0	0.0%
Alternative Programs (Grades K-12)	2	0.4%

Enrollment in Compensatory Programs

Program	Program Enrollment	% of Student Population
Special Education (Grades K-12) (PK)	62 0	11.2% N/A
English to Speakers of Other Languages (ESOL) (Grades K-12)	88	15.8%
Title I (Grades K-12)	This School has no Title I Program.	

Students Eligible to Receive Free/Reduced-price Lunches

	Number	Percent
School	268	48.2%
System	21,659	31.6%

Dropout Rate for Grades 6-8

	Number	Percent
School	1	0.1%
System	44	0.2%

Retained Students, by Race/Ethnicity and Gender

Total	Black	White	Hispanic	Asian	American Indian	Multi-Racial	Male	Female
17	4 23.5%	3 17.6%	10 58.8%	0 0.0%	0 0.0%	0 0.0%	10 58.8%	7 41.2%

2000-2001 Georgia Public Education Report Card

Fulton County

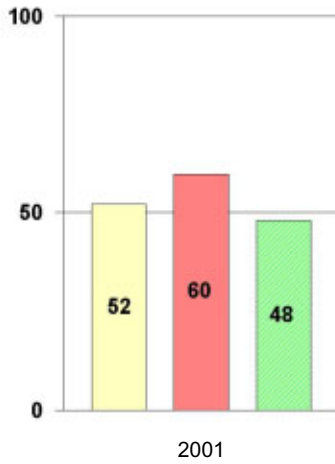
Ridgeview Middle School

NORM-REFERENCED ASSESSMENTS

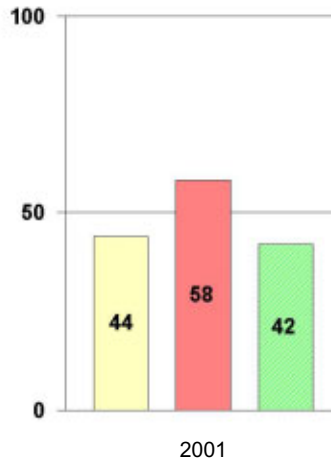
Stanford 9 Tests, Grade 8

Each chart reflects data for one year of testing.

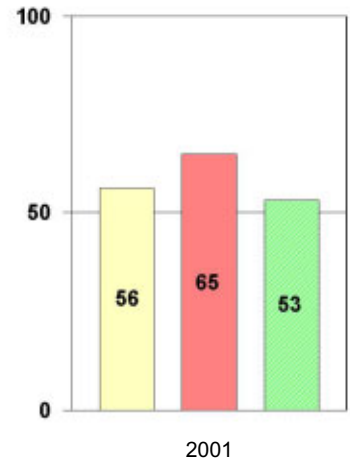
Total Reading



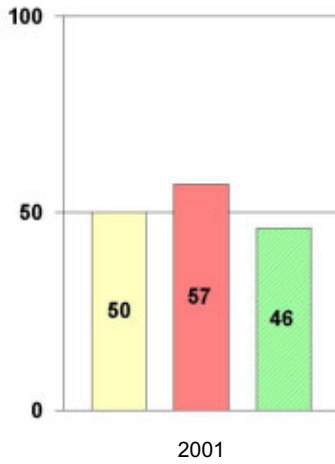
Total Mathematics



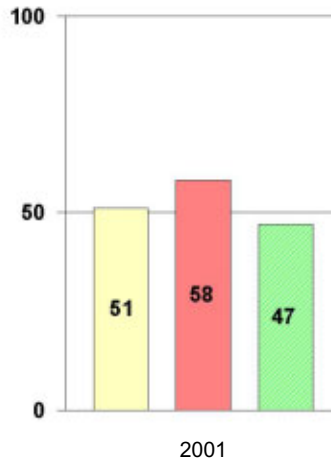
Language



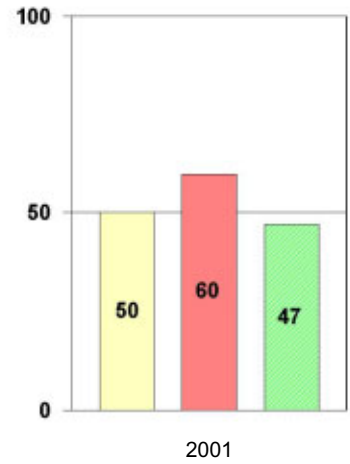
Science



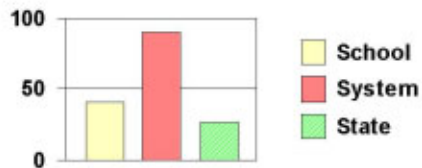
Social Science



Complete Battery



Legend



2000-2001 Georgia Public Education Report Card

Fulton County

Ridgeview Middle School

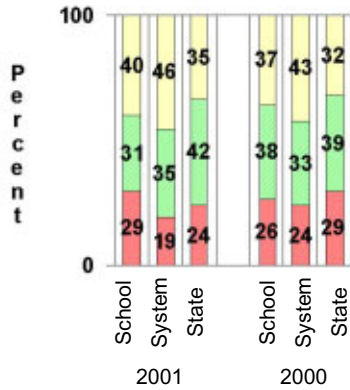
CRITERION-REFERENCED ASSESSMENTS

Criterion-Referenced Competency Tests (CRCTs)

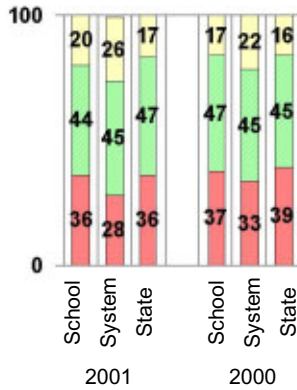
Percentage of Students Scoring in the Indicated Achievement Levels

Each chart reflects data for two years of testing.

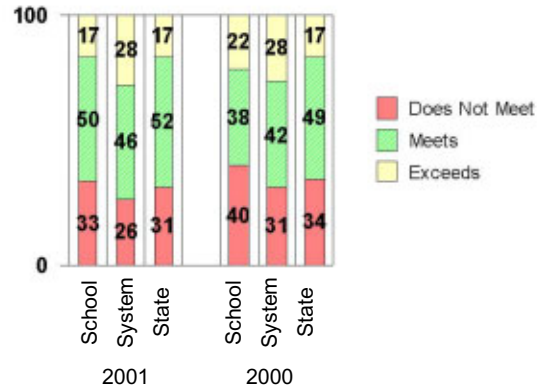
Grade 6 Reading



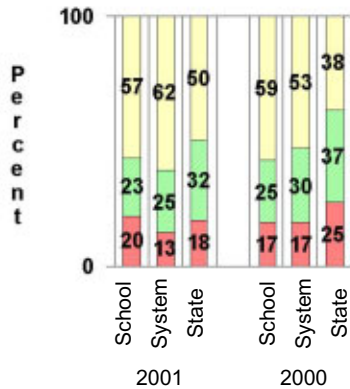
Grade 6 Language Arts



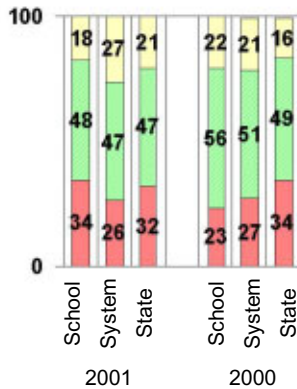
Grade 6 Mathematics



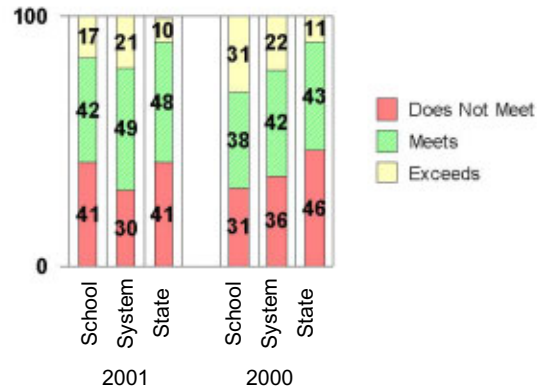
Grade 8 Reading



Grade 8 Language Arts



Grade 8 Mathematics



PERFORMANCE ASSESSMENTS

Grade 8 Writing Assessment

		2000-2001			1999-2000		
Categories of Scaled Scores:		School	System	State	School	System	State
Not on Target	(300-348)	16%	12%	17%	15%	19%	28%
On Target	(349-367)	69%	67%	72%	63%	59%	58%
Exceeds Target	(368-400)	15%	20%	12%	22%	22%	13%
Average Scaled Score: (Range 300-400)		357	360	357	360	359	354

2000-2001 Georgia Public Education Report Card

Fulton County

Ridgeview Middle School

CERTIFIED PERSONNEL DATA

		Administrators	Support Personnel	PK-12 Teachers
Positions	Number	3.72	6.62	46.49
	Average Contract Days	230.31	198.16	190.00
Personnel	Full-time	3	5	46
	Part-time	14	11	1
Gender	Male	3	4	15
	Female	14	12	32
Certificate Level	4 Yr Bachelor's	5	3	23
	5 Yr Master's	9	11	22
	6 Yr Specialist's	2	2	1
	7 Yr Doctoral	1	0	1
	Other *	0	0	0
Years Experience	<1	0	2	2
	1-10	8	5	23
	11-20	5	7	11
	21-30	3	1	10
	>30	1	1	1
	Average	14.76	12.56	12.21

* Includes One- and Two-Year Vocational Certificates.

ACCREDITATION DATA

Accredited by Southern Association of Colleges and Schools (SACS):
Elementary/Middle Commission

AWARDS/RECOGNITION DATA

Schools in Georgia may receive recognition in the following programs:

- Charter School
- Pay for Performance Program
- Georgia School of Excellence
- National Blue Ribbon School

Ridgeview Middle School did not receive recognition in any of these programs during the 2000-2001 school year.

For more information about these programs, contact your school principal or the school system central office.