

# 2000-2001 Georgia Public Education Report Card

## Fulton County

### Parklane Elementary School - 6603064

Grade Range - PK-5

The Georgia Public Education Report Card is designed to assist systems and schools in educational improvement. This report card contains a variety of data elements. An explanation of the terms is provided as a companion to the report card data. Please refer to the definitions for the most effective use of the reported data.

#### STUDENT DATA

##### Total Enrollment, by Race/Ethnicity and Gender

Total	Black	White	Hispanic	Asian	American Indian	Multi-Racial	Male	Female
K-5: 763	622 81.5%	23 3.0%	100 13.1%	6 0.8%	0 0.0%	12 1.6%	374 49.0%	389 51.0%
PK: 79	54 68.4%	1 1.3%	22 27.8%	0 0.0%	0 0.0%	2 2.5%	34 43.0%	45 57.0%

##### Enrollment in Selected Programs

Program	Program Enrollment	% of Student Population
Gifted (Grades K-12)	4	0.5%
Alternative Programs (Grades K-12)	0	0.0%

##### Enrollment in Compensatory Programs

Program	Program Enrollment	% of Student Population
Special Education (Grades K-12) (PK)	83 0	10.9% N/A
English to Speakers of Other Languages (ESOL) (Grades K-12)	71	9.3%
Early Intervention Program (EIP) (Grades K-3)	262	52.0%
Remedial Education (Grades 4-5, 9-12)	85	32.8%
Title I (Grades K-12)	This School has a Schoolwide Title I Program.	

##### Students Eligible to Receive Free/Reduced-price Lunches

	Number	Percent
School	780	92.6%
System	21,659	31.6%

##### Dropout Rate \*

	Number	Percent
School	N/A	N/A
System	N/A	N/A

\* - Dropouts are not reported for grades PK-5.

##### Retained Students, by Race/Ethnicity and Gender

Total	Black	White	Hispanic	Asian	American Indian	Multi-Racial	Male	Female
25	20 80.0%	2 8.0%	3 12.0%	0 0.0%	0 0.0%	0 0.0%	9 36.0%	16 64.0%

# 2000-2001 Georgia Public Education Report Card

## Fulton County

### Parklane Elementary School

#### NORM-REFERENCED ASSESSMENTS

##### Stanford 9 Tests, Grade 3

Each chart reflects data for one year of testing.

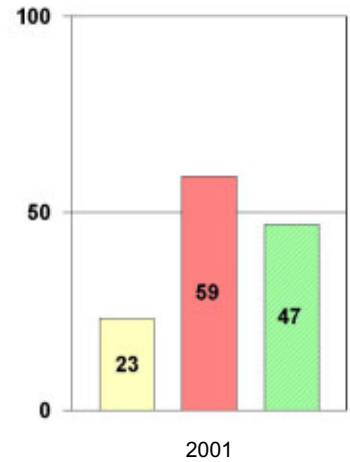
###### Total Reading



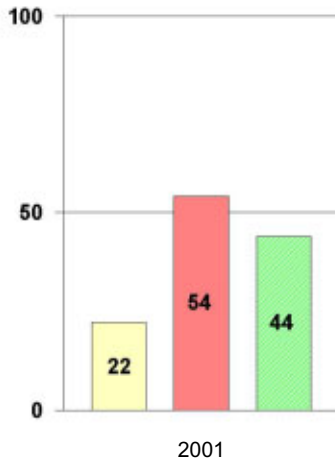
###### Total Mathematics



###### Language



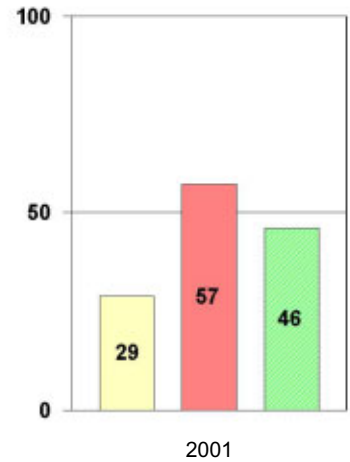
###### Science



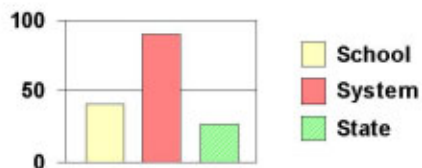
###### Social Science



###### Complete Battery



#### Legend



# 2000-2001 Georgia Public Education Report Card

## Fulton County

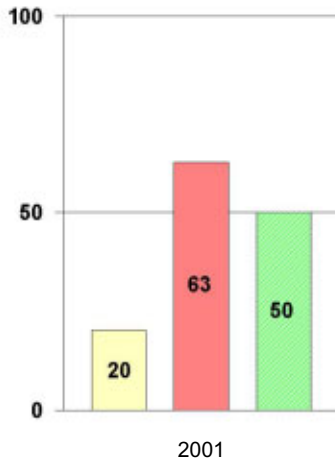
### Parklane Elementary School

#### NORM-REFERENCED ASSESSMENTS

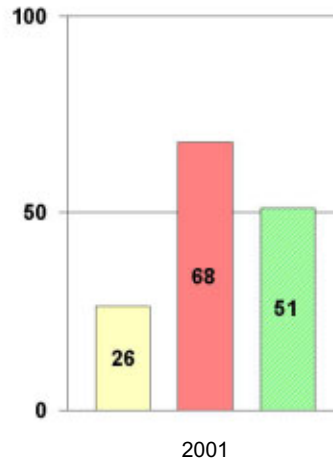
##### Stanford 9 Tests, Grade 5

Each chart reflects data for one year of testing.

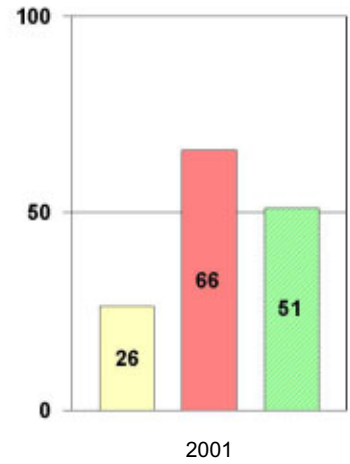
###### Total Reading



###### Total Mathematics



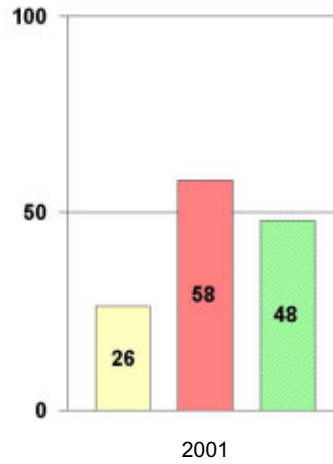
###### Language



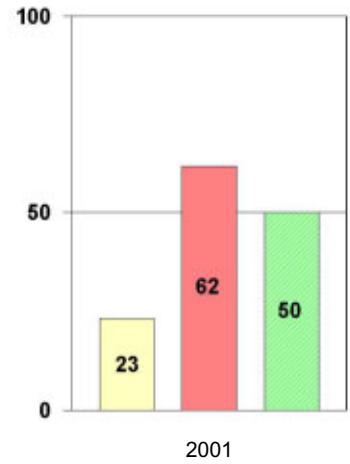
###### Science



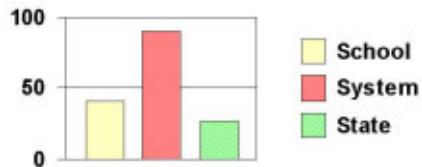
###### Social Science



###### Complete Battery



#### Legend



# 2000-2001 Georgia Public Education Report Card

## Fulton County Parklane Elementary School

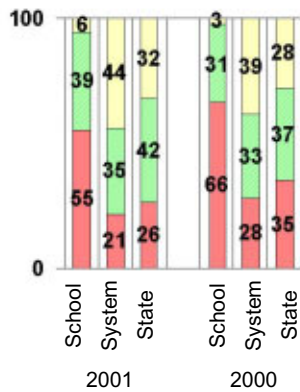
### CRITERION-REFERENCED ASSESSMENTS

#### Criterion-Referenced Competency Tests (CRCTs)

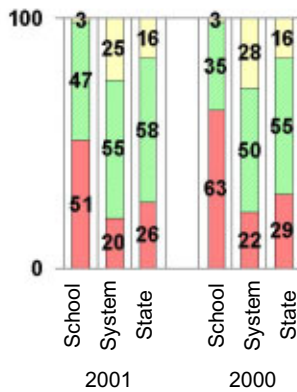
Percentage of Students Scoring in the Indicated Achievement Levels

Each chart reflects data for two years of testing.

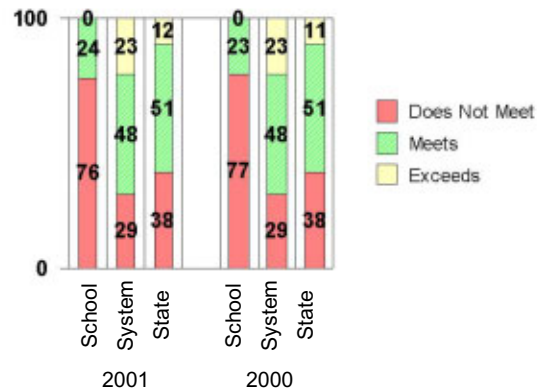
Grade 4 Reading



Grade 4 Language Arts



Grade 4 Mathematics



### PERFORMANCE ASSESSMENTS

#### Grade 5 Writing Assessment

Percent at Developmental Stages:	2000-2001			1999-2000			1998-99		
	School	System	State	School	System	State	School	System	State
<b>Stage 1:</b> The Emerging Writer	1%	1%	1%	3%	1%	1%	1%	0%	1%
<b>Stage 2:</b> The Developing Writer	7%	2%	2%	13%	3%	2%	6%	2%	2%
<b>Stage 3:</b> The Focusing Writer	32%	14%	17%	33%	16%	19%	30%	14%	19%
<b>Stage 4:</b> The Experimenting Writer	46%	34%	42%	35%	38%	41%	37%	35%	41%
<b>Stage 5:</b> The Engaging Writer	13%	32%	29%	16%	29%	27%	21%	31%	27%
<b>Stage 6:</b> The Extending Writer	1%	17%	9%	1%	14%	9%	5%	18%	11%

# 2000-2001 Georgia Public Education Report Card

## Fulton County

### Parklane Elementary School

#### CERTIFIED PERSONNEL DATA

		Administrators	Support Personnel	PK-12 Teachers
Positions	Number	4.39	5.77	53.83
	Average Contract Days	224.22	194.94	190.56
Personnel	Full-time	4	4	52
	Part-time	9	9	6
Gender	Male	2	1	4
	Female	11	12	54
Certificate Level	4 Yr Bachelor's	5	5	38
	5 Yr Master's	6	5	17
	6 Yr Specialist's	2	3	2
	7 Yr Doctoral	0	0	1
	Other *	0	0	0
Years Experience	<1	0	0	4
	1-10	5	8	30
	11-20	3	2	7
	21-30	2	3	14
	>30	3	0	3
	Average	17.62	11.54	11.62

\* Includes One- and Two-Year Vocational Certificates.

#### ACCREDITATION DATA

Accredited by Southern Association of Colleges and Schools (SACS):  
Elementary/Middle Commission

#### AWARDS/RECOGNITION DATA

Schools in Georgia may receive recognition in the following programs:

- Charter School
- Pay for Performance Program
- Georgia School of Excellence
- National Blue Ribbon School

Parklane Elementary School did not receive recognition in any of these programs during the 2000-2001 school year.

For more information about these programs, contact your school principal or the school system central office.