

2000-2001 Georgia Public Education Report Card

Fulton County

Palmetto Elementary School - 6600292

Grade Range - PK-5

The Georgia Public Education Report Card is designed to assist systems and schools in educational improvement. This report card contains a variety of data elements. An explanation of the terms is provided as a companion to the report card data. Please refer to the definitions for the most effective use of the reported data.

STUDENT DATA

Total Enrollment, by Race/Ethnicity and Gender

Total	Black	White	Hispanic	Asian	American Indian	Multi-Racial	Male	Female
K-5: 426	209 49.1%	173 40.6%	35 8.2%	1 0.2%	0 0.0%	8 1.9%	229 53.8%	197 46.2%
PK: 37	22 59.5%	7 18.9%	7 18.9%	0 0.0%	0 0.0%	1 2.7%	18 48.6%	19 51.4%

Enrollment in Selected Programs

Program	Program Enrollment	% of Student Population
Gifted (Grades K-12)	12	2.8%
Alternative Programs (Grades K-12)	0	0.0%

Enrollment in Compensatory Programs

Program	Program Enrollment	% of Student Population
Special Education (Grades K-12) (PK)	57 0	13.4% N/A
English to Speakers of Other Languages (ESOL) (Grades K-12)	0	0.0%
Early Intervention Program (EIP) (Grades K-3)	119	44.2%
Remedial Education (Grades 4-5, 9-12)	65	41.4%
Title I (Grades K-12)	This School has a Targeted-Assistance Title I Program.	

Students Eligible to Receive Free/Reduced-price Lunches

	Number	Percent
School	299	64.6%
System	21,659	31.6%

Dropout Rate *

	Number	Percent
School	N/A	N/A
System	N/A	N/A

* - Dropouts are not reported for grades PK-5.

Retained Students, by Race/Ethnicity and Gender

Total	Black	White	Hispanic	Asian	American Indian	Multi-Racial	Male	Female
11	5 45.5%	3 27.3%	3 27.3%	0 0.0%	0 0.0%	0 0.0%	9 81.8%	2 18.2%

2000-2001 Georgia Public Education Report Card

Fulton County

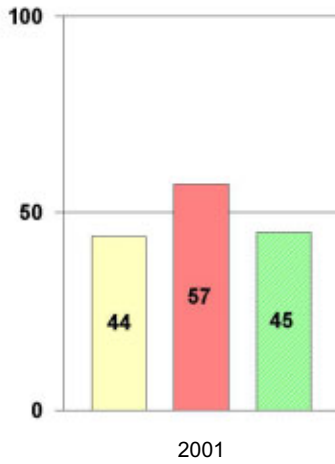
Palmetto Elementary School

NORM-REFERENCED ASSESSMENTS

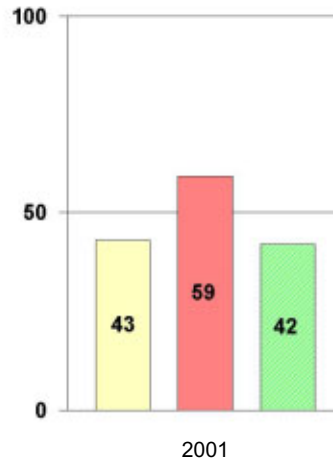
Stanford 9 Tests, Grade 3

Each chart reflects data for one year of testing.

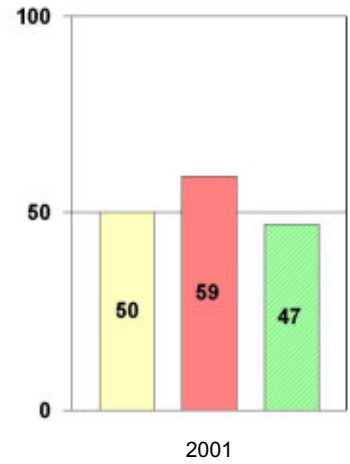
Total Reading



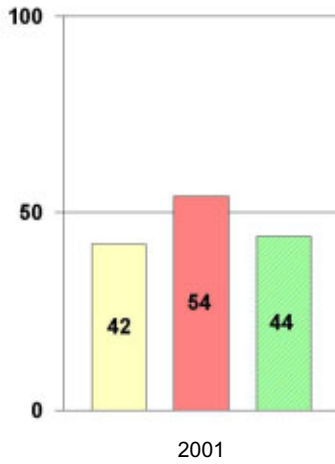
Total Mathematics



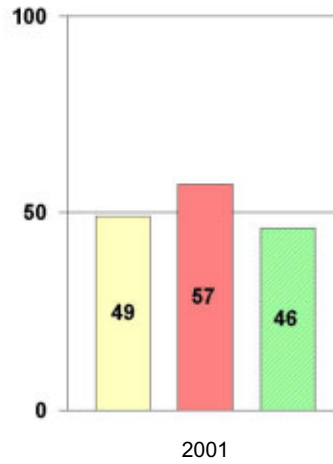
Language



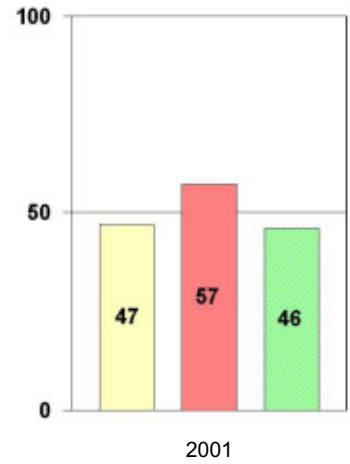
Science



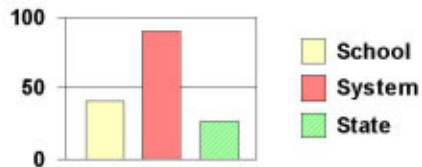
Social Science



Complete Battery



Legend



2000-2001 Georgia Public Education Report Card

Fulton County

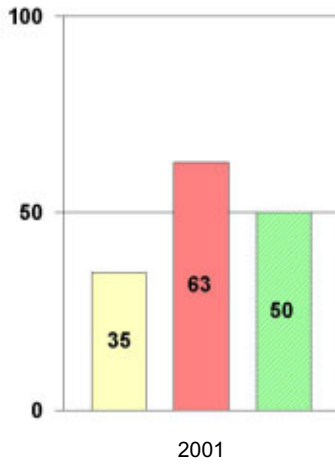
Palmetto Elementary School

NORM-REFERENCED ASSESSMENTS

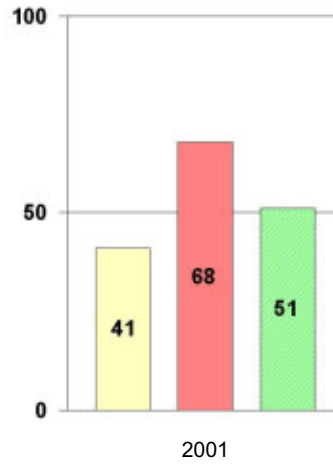
Stanford 9 Tests, Grade 5

Each chart reflects data for one year of testing.

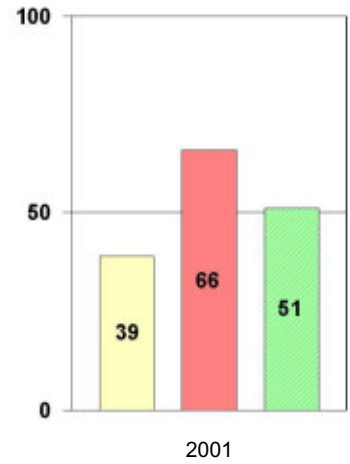
Total Reading



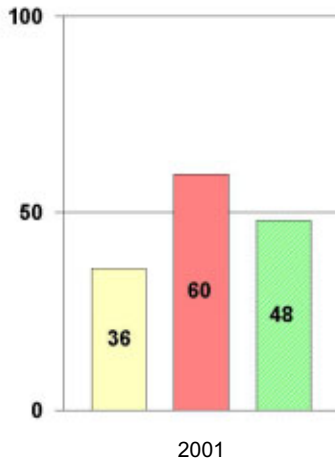
Total Mathematics



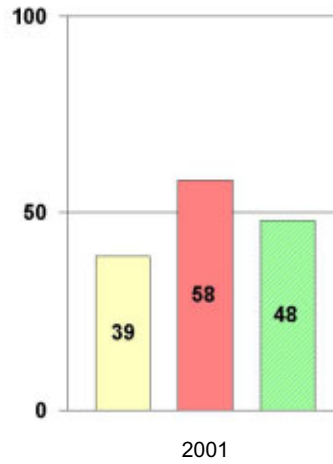
Language



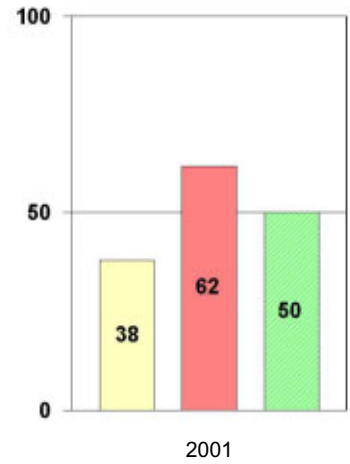
Science



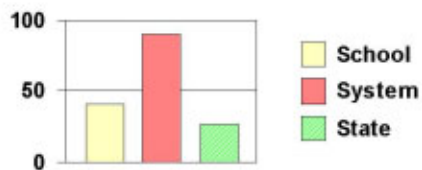
Social Science



Complete Battery



Legend



2000-2001 Georgia Public Education Report Card

Fulton County Palmetto Elementary School

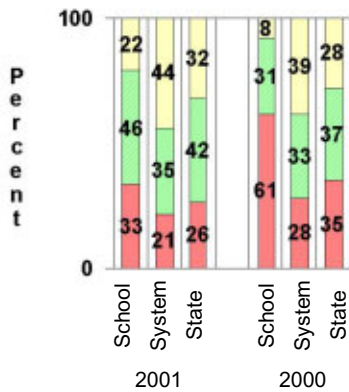
CRITERION-REFERENCED ASSESSMENTS

Criterion-Referenced Competency Tests (CRCTs)

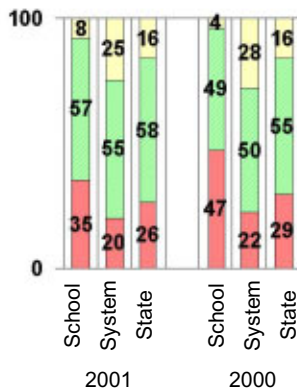
Percentage of Students Scoring in the Indicated Achievement Levels

Each chart reflects data for two years of testing.

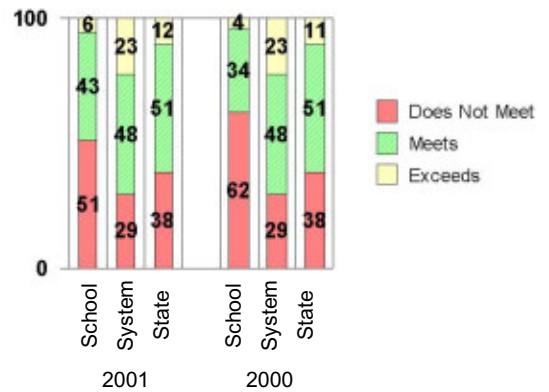
Grade 4 Reading



Grade 4 Language Arts



Grade 4 Mathematics



PERFORMANCE ASSESSMENTS

Grade 5 Writing Assessment

Percent at Developmental Stages:	2000-2001			1999-2000			1998-99		
	School	System	State	School	System	State	School	System	State
Stage 1: The Emerging Writer	1%	1%	1%	0%	1%	1%	0%	0%	1%
Stage 2: The Developing Writer	6%	2%	2%	5%	3%	2%	9%	2%	2%
Stage 3: The Focusing Writer	38%	14%	17%	32%	16%	19%	33%	14%	19%
Stage 4: The Experimenting Writer	40%	34%	42%	50%	38%	41%	34%	35%	41%
Stage 5: The Engaging Writer	12%	32%	29%	12%	29%	27%	21%	31%	27%
Stage 6: The Extending Writer	3%	17%	9%	1%	14%	9%	3%	18%	11%

2000-2001 Georgia Public Education Report Card

Fulton County

Palmetto Elementary School

CERTIFIED PERSONNEL DATA

		Administrators	Support Personnel	PK-12 Teachers
Positions	Number	2.23	2.62	28.43
	Average Contract Days	234.89	197.43	190.53
Personnel	Full-time	2	1	26
	Part-time	6	8	4
Gender	Male	0	2	4
	Female	8	7	26
Certificate Level	4 Yr Bachelor's	3	0	11
	5 Yr Master's	4	6	16
	6 Yr Specialist's	1	3	3
	7 Yr Doctoral	0	0	0
	Other *	0	0	0
Years Experience	<1	0	1	3
	1-10	1	2	6
	11-20	4	4	9
	21-30	3	2	12
	>30	0	0	0
	Average	18.50	14.00	15.93

* Includes One- and Two-Year Vocational Certificates.

ACCREDITATION DATA

Accredited by Southern Association of Colleges and Schools (SACS):
Elementary/Middle Commission

AWARDS/RECOGNITION DATA

Schools in Georgia may receive recognition in the following programs:

- Charter School
- Pay for Performance Program
- Georgia School of Excellence
- National Blue Ribbon School

Palmetto Elementary School did not receive recognition in any of these programs during the 2000-2001 school year.

For more information about these programs, contact your school principal or the school system central office.