

2000-2001 Georgia Public Education Report Card

Fulton County

Ocee Elementary School - 6600701

Grade Range - PK-5

The Georgia Public Education Report Card is designed to assist systems and schools in educational improvement. This report card contains a variety of data elements. An explanation of the terms is provided as a companion to the report card data. Please refer to the definitions for the most effective use of the reported data.

STUDENT DATA

Total Enrollment, by Race/Ethnicity and Gender

Total	Black	White	Hispanic	Asian	American Indian	Multi-Racial	Male	Female
K-5: 832	49 5.9%	603 72.5%	38 4.6%	114 13.7%	0 0.0%	28 3.4%	428 51.4%	404 48.6%
PK: 1	0 0.0%	1 100.0%	0 0.0%	0 0.0%	0 0.0%	0 0.0%	1 100.0%	0 0.0%

Enrollment in Selected Programs

Program	Program Enrollment	% of Student Population
Gifted (Grades K-12)	66	7.9%
Alternative Programs (Grades K-12)	0	0.0%

Enrollment in Compensatory Programs

Program	Program Enrollment	% of Student Population
Special Education (Grades K-12) (PK)	77 1	9.3% N/A
English to Speakers of Other Languages (ESOL) (Grades K-12)	33	4.0%
Early Intervention Program (EIP) (Grades K-3)	0	0.0%
Remedial Education (Grades 4-5, 9-12)	13	4.6%
Title I (Grades K-12)	This School has no Title I Program.	

Students Eligible to Receive Free/Reduced-price Lunches

	Number	Percent
School	12	1.4%
System	21,659	31.6%

Dropout Rate *

	Number	Percent
School	N/A	N/A
System	N/A	N/A

* - Dropouts are not reported for grades PK-5.

Retained Students, by Race/Ethnicity and Gender

Total	Black	White	Hispanic	Asian	American Indian	Multi-Racial	Male	Female
9	3 33.3%	6 66.7%	0 0.0%	0 0.0%	0 0.0%	0 0.0%	5 55.6%	4 44.4%

2000-2001 Georgia Public Education Report Card

Fulton County

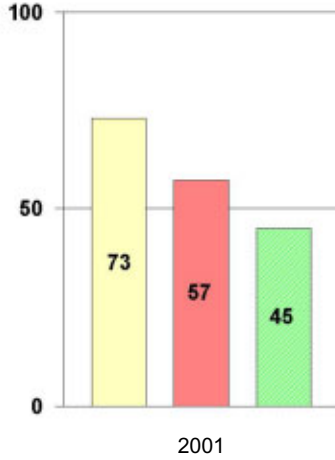
Ocee Elementary School

NORM-REFERENCED ASSESSMENTS

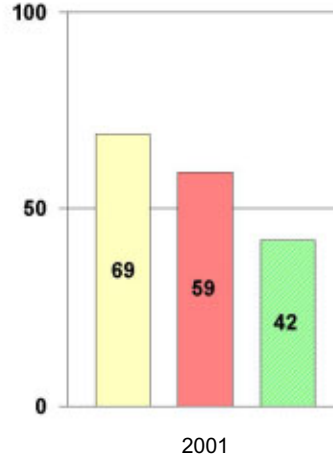
Stanford 9 Tests, Grade 3

Each chart reflects data for one year of testing.

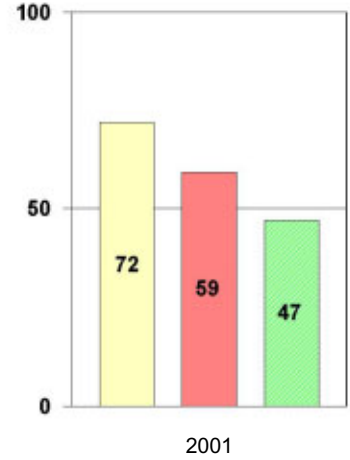
Total Reading



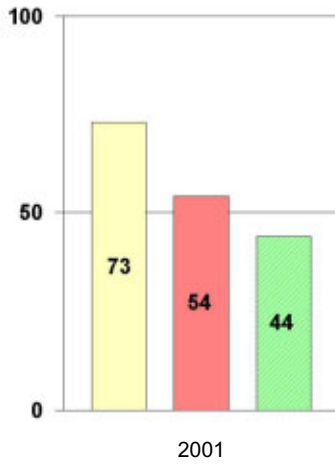
Total Mathematics



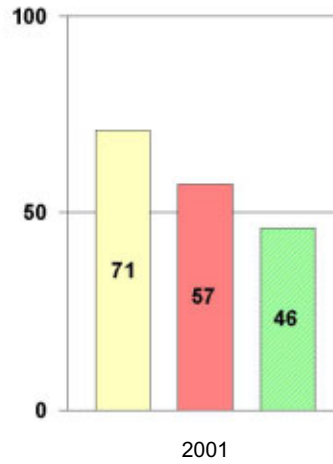
Language



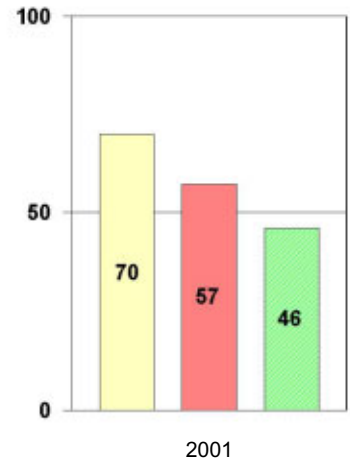
Science



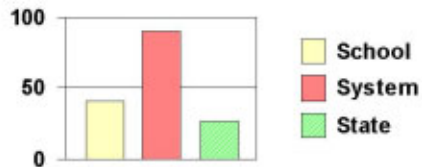
Social Science



Complete Battery



Legend



2000-2001 Georgia Public Education Report Card

Fulton County

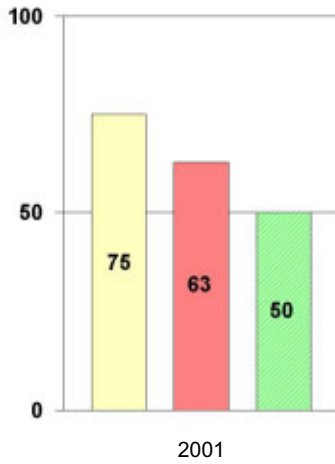
Ocee Elementary School

NORM-REFERENCED ASSESSMENTS

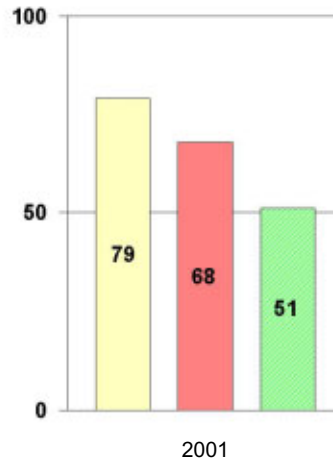
Stanford 9 Tests, Grade 5

Each chart reflects data for one year of testing.

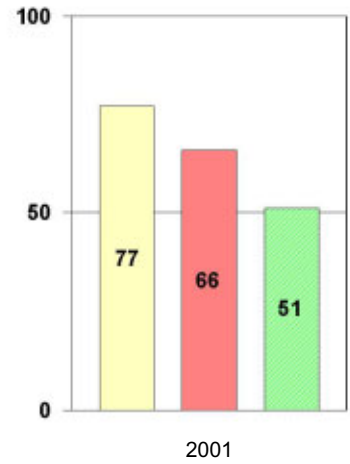
Total Reading



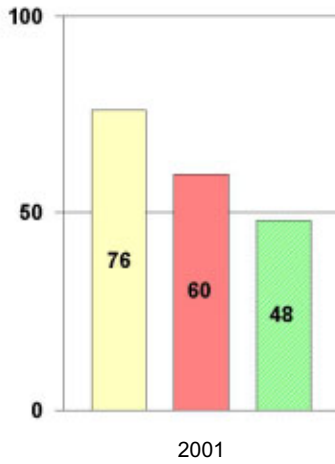
Total Mathematics



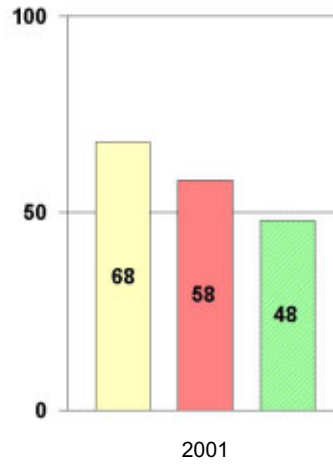
Language



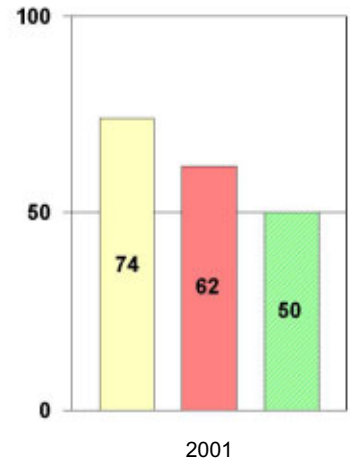
Science



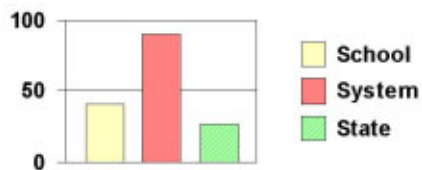
Social Science



Complete Battery



Legend



2000-2001 Georgia Public Education Report Card

Fulton County Ocee Elementary School

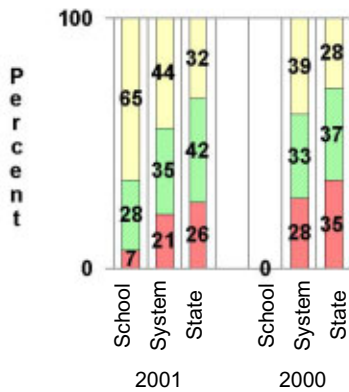
CRITERION-REFERENCED ASSESSMENTS

Criterion-Referenced Competency Tests (CRCTs)

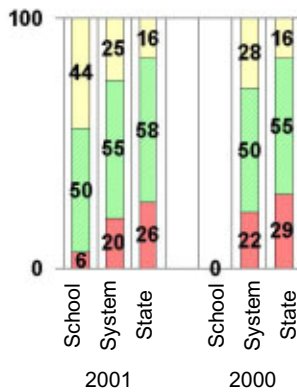
Percentage of Students Scoring in the Indicated Achievement Levels

Each chart reflects data for two years of testing.

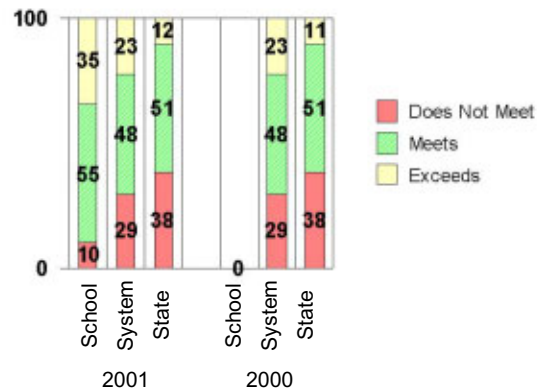
Grade 4 Reading



Grade 4 Language Arts



Grade 4 Mathematics



PERFORMANCE ASSESSMENTS

Grade 5 Writing Assessment

Percent at Developmental Stages:	2000-2001			1999-2000			1998-99		
	School	System	State	School	System	State	School	System	State
Stage 1: The Emerging Writer	0%	1%	1%	0%	1%	1%	0%	0%	1%
Stage 2: The Developing Writer	0%	2%	2%	0%	3%	2%	0%	2%	2%
Stage 3: The Focusing Writer	6%	14%	17%	0%	16%	19%	0%	14%	19%
Stage 4: The Experimenting Writer	27%	34%	42%	0%	38%	41%	0%	35%	41%
Stage 5: The Engaging Writer	41%	32%	29%	0%	29%	27%	0%	31%	27%
Stage 6: The Extending Writer	26%	17%	9%	0%	14%	9%	0%	18%	11%

2000-2001 Georgia Public Education Report Card

Fulton County

Ocee Elementary School

CERTIFIED PERSONNEL DATA

		Administrators	Support Personnel	PK-12 Teachers
Positions	Number	2.39	4.70	46.92
	Average Contract Days	231.92	196.38	190.32
Personnel	Full-time	2	3	45
	Part-time	8	5	6
Gender	Male	3	1	7
	Female	7	7	44
Certificate Level	4 Yr Bachelor's	4	2	29
	5 Yr Master's	4	6	21
	6 Yr Specialist's	2	0	1
	7 Yr Doctoral	0	0	0
	Other *	0	0	0
Years Experience	<1	1	3	16
	1-10	5	3	18
	11-20	2	1	11
	21-30	2	1	5
	>30	0	0	1
	Average	9.50	6.00	8.10

* Includes One- and Two-Year Vocational Certificates.

ACCREDITATION DATA

Accredited by Southern Association of Colleges and Schools (SACS):
Elementary/Middle Commission

AWARDS/RECOGNITION DATA

Schools in Georgia may receive recognition in the following programs:

- Charter School
- Pay for Performance Program
- Georgia School of Excellence
- National Blue Ribbon School

Ocee Elementary School did not receive recognition in any of these programs during the 2000-2001 school year.

For more information about these programs, contact your school principal or the school system central office.