

# 2000-2001 Georgia Public Education Report Card

## Fulton County

### Oak Knoll Elementary School - 6601064

Grade Range - PK-5

The Georgia Public Education Report Card is designed to assist systems and schools in educational improvement. This report card contains a variety of data elements. An explanation of the terms is provided as a companion to the report card data. Please refer to the definitions for the most effective use of the reported data.

#### STUDENT DATA

##### Total Enrollment, by Race/Ethnicity and Gender

Total	Black	White	Hispanic	Asian	American Indian	Multi-Racial	Male	Female
K-5: 972	752 77.4%	15 1.5%	178 18.3%	2 0.2%	0 0.0%	25 2.6%	494 50.8%	478 49.2%
PK: 21	10 47.6%	0 0.0%	11 52.4%	0 0.0%	0 0.0%	0 0.0%	12 57.1%	9 42.9%

##### Enrollment in Selected Programs

Program	Program Enrollment	% of Student Population
Gifted (Grades K-12)	0	0.0%
Alternative Programs (Grades K-12)	0	0.0%

##### Enrollment in Compensatory Programs

Program	Program Enrollment	% of Student Population
Special Education (Grades K-12) (PK)	83 1	8.5% N/A
English to Speakers of Other Languages (ESOL) (Grades K-12)	122	12.6%
Early Intervention Program (EIP) (Grades K-3)	139	21.6%
Remedial Education (Grades 4-5, 9-12)	106	32.3%
Title I (Grades K-12)	This School has a Schoolwide Title I Program.	

##### Students Eligible to Receive Free/Reduced-price Lunches

	Number	Percent
School	810	81.6%
System	21,659	31.6%

##### Dropout Rate \*

	Number	Percent
School	N/A	N/A
System	N/A	N/A

\* - Dropouts are not reported for grades PK-5.

##### Retained Students, by Race/Ethnicity and Gender

Total	Black	White	Hispanic	Asian	American Indian	Multi-Racial	Male	Female
28	14 50.0%	1 3.6%	13 46.4%	0 0.0%	0 0.0%	0 0.0%	16 57.1%	12 42.9%

# 2000-2001 Georgia Public Education Report Card

## Fulton County

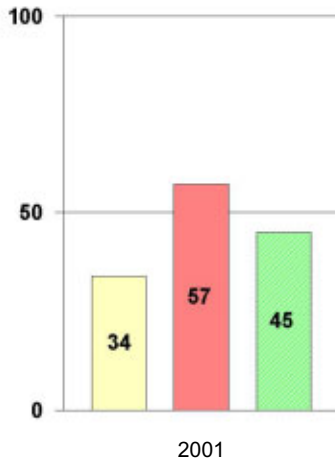
### Oak Knoll Elementary School

#### NORM-REFERENCED ASSESSMENTS

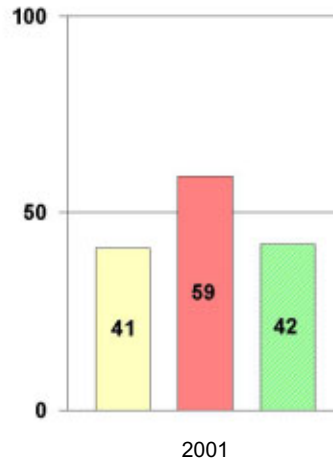
##### Stanford 9 Tests, Grade 3

Each chart reflects data for one year of testing.

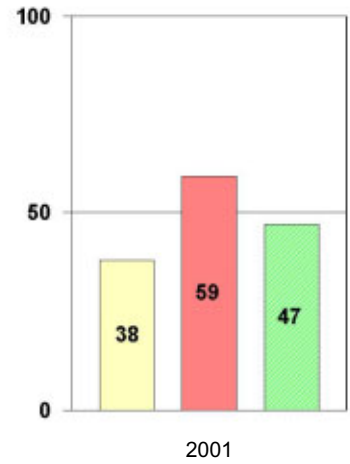
**Total Reading**



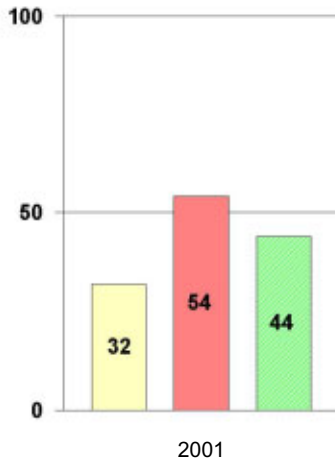
**Total Mathematics**



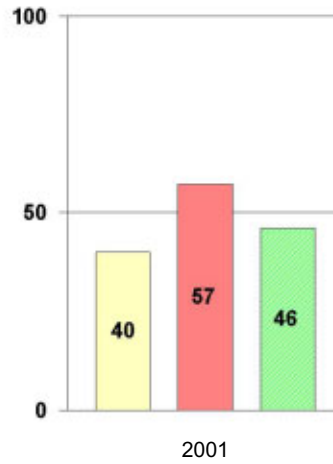
**Language**



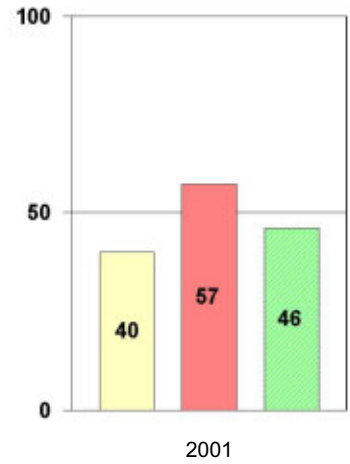
**Science**



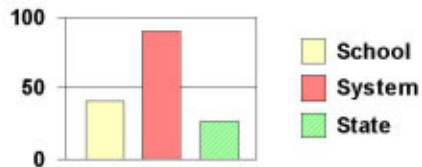
**Social Science**



**Complete Battery**



#### Legend



# 2000-2001 Georgia Public Education Report Card

## Fulton County

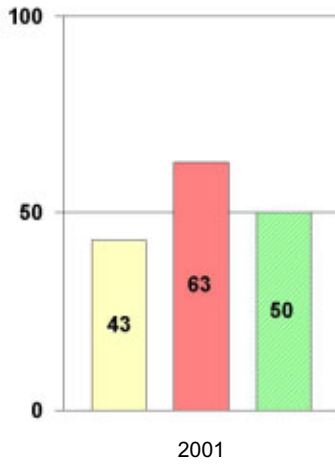
### Oak Knoll Elementary School

#### NORM-REFERENCED ASSESSMENTS

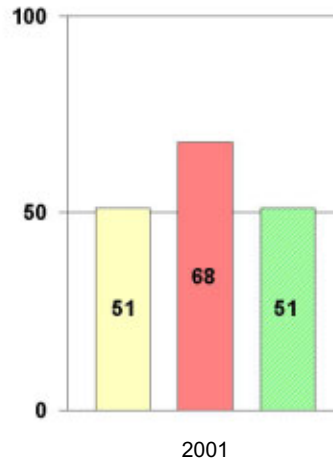
##### Stanford 9 Tests, Grade 5

Each chart reflects data for one year of testing.

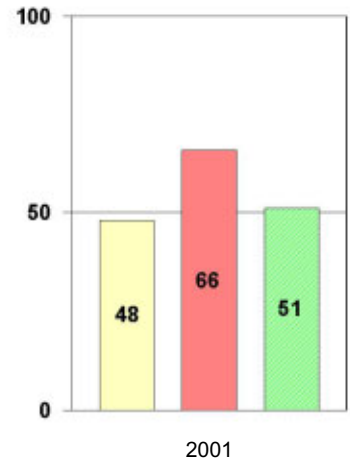
**Total Reading**



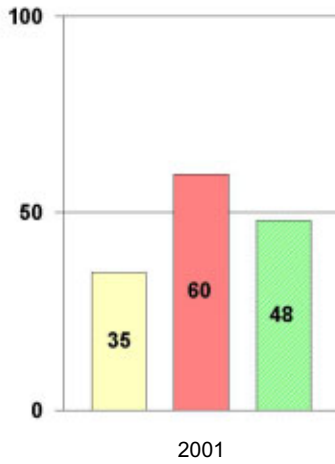
**Total Mathematics**



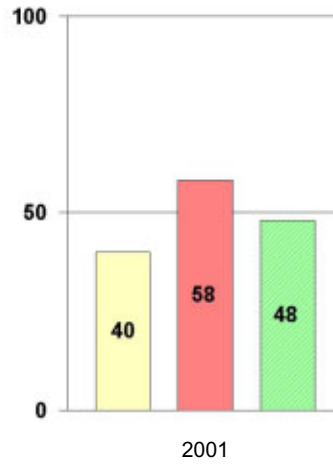
**Language**



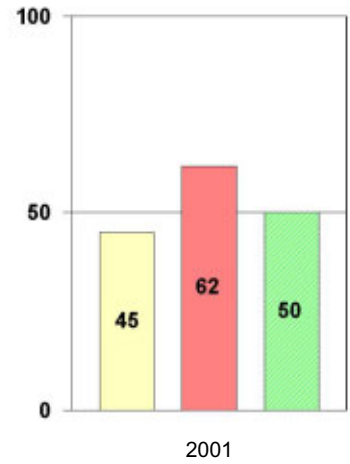
**Science**



**Social Science**



**Complete Battery**



#### Legend



# 2000-2001 Georgia Public Education Report Card

## Fulton County Oak Knoll Elementary School

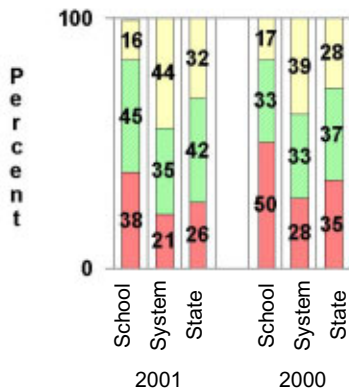
### CRITERION-REFERENCED ASSESSMENTS

#### Criterion-Referenced Competency Tests (CRCTs)

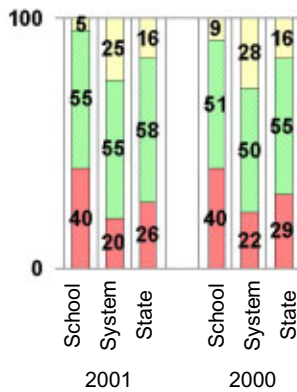
Percentage of Students Scoring in the Indicated Achievement Levels

Each chart reflects data for two years of testing.

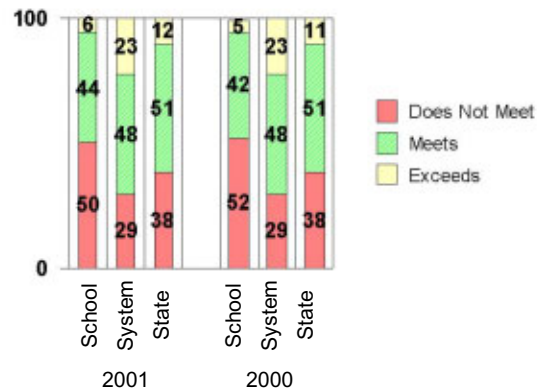
Grade 4 Reading



Grade 4 Language Arts



Grade 4 Mathematics



### PERFORMANCE ASSESSMENTS

#### Grade 5 Writing Assessment

Percent at Developmental Stages:	2000-2001			1999-2000			1998-99		
	School	System	State	School	System	State	School	System	State
<b>Stage 1:</b> The Emerging Writer	1%	1%	1%	2%	1%	1%	1%	0%	1%
<b>Stage 2:</b> The Developing Writer	5%	2%	2%	21%	3%	2%	4%	2%	2%
<b>Stage 3:</b> The Focusing Writer	21%	14%	17%	38%	16%	19%	17%	14%	19%
<b>Stage 4:</b> The Experimenting Writer	48%	34%	42%	29%	38%	41%	54%	35%	41%
<b>Stage 5:</b> The Engaging Writer	21%	32%	29%	11%	29%	27%	23%	31%	27%
<b>Stage 6:</b> The Extending Writer	4%	17%	9%	0%	14%	9%	1%	18%	11%

# 2000-2001 Georgia Public Education Report Card

## Fulton County

### Oak Knoll Elementary School

#### CERTIFIED PERSONNEL DATA

		Administrators	Support Personnel	PK-12 Teachers
Positions	Number	3.40	5.43	58.83
	Average Contract Days	234.21	196.49	190.25
Personnel	Full-time	3	4	56
	Part-time	8	6	7
Gender	Male	1	2	7
	Female	10	8	56
Certificate Level	4 Yr Bachelor's	4	3	39
	5 Yr Master's	5	5	21
	6 Yr Specialist's	2	2	3
	7 Yr Doctoral	0	0	0
	Other *	0	0	0
Years Experience	<1	0	3	8
	1-10	5	2	36
	11-20	2	2	6
	21-30	4	3	10
	>30	0	0	3
	Average	13.45	11.50	8.59

\* Includes One- and Two-Year Vocational Certificates.

#### ACCREDITATION DATA

Accredited by Southern Association of Colleges and Schools (SACS):  
Elementary/Middle Commission

#### AWARDS/RECOGNITION DATA

Schools in Georgia may receive recognition in the following programs:

- Charter School
- Pay for Performance Program
- Georgia School of Excellence
- National Blue Ribbon School

Oak Knoll Elementary School did not receive recognition in any of these programs during the 2000-2001 school year.

For more information about these programs, contact your school principal or the school system central office.