

2000-2001 Georgia Public Education Report Card

Fulton County

Northwood Elementary School - 6600197

Grade Range - K-5

The Georgia Public Education Report Card is designed to assist systems and schools in educational improvement. This report card contains a variety of data elements. An explanation of the terms is provided as a companion to the report card data. Please refer to the definitions for the most effective use of the reported data.

STUDENT DATA

Total Enrollment, by Race/Ethnicity and Gender

Total	Black	White	Hispanic	Asian	American Indian	Multi-Racial	Male	Female	
K-5:	877	134	585	76	40	1	41	455	422
		15.3%	66.7%	8.7%	4.6%	0.1%	4.7%	51.9%	48.1%

Enrollment in Selected Programs

Program	Program Enrollment	% of Student Population
Gifted (Grades K-12)	60	6.8%
Alternative Programs (Grades K-12)	0	0.0%

Students Eligible to Receive Free/Reduced-price Lunches

	Number	Percent
School	133	15.2%
System	21,659	31.6%

Dropout Rate *

	Number	Percent
School	N/A	N/A
System	N/A	N/A

* - Dropouts are not reported for grades PK-5.

Enrollment in Compensatory Programs

Program	Program Enrollment	% of Student Population
Special Education (Grades K-12) (PK)	102 0	11.6% N/A
English to Speakers of Other Languages (ESOL) (Grades K-12)	52	5.9%
Early Intervention Program (EIP) (Grades K-3)	79	13.6%
Remedial Education (Grades 4-5, 9-12)	51	17.1%
Title I (Grades K-12)	This School has no Title I Program.	

Retained Students, by Race/Ethnicity and Gender

Total	Black	White	Hispanic	Asian	American Indian	Multi-Racial	Male	Female
15	7	3	4	0	0	1	10	5
	46.7%	20.0%	26.7%	0.0%	0.0%	6.7%	66.7%	33.3%

2000-2001 Georgia Public Education Report Card

Fulton County

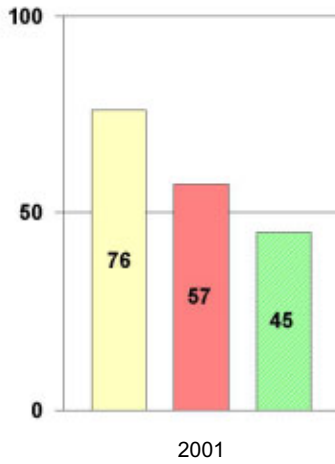
Northwood Elementary School

NORM-REFERENCED ASSESSMENTS

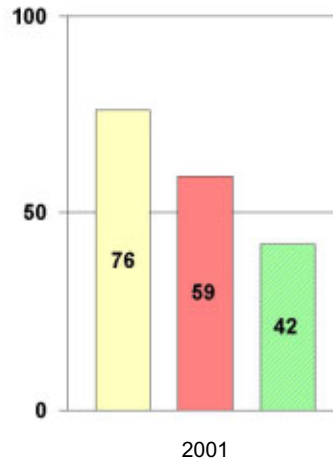
Stanford 9 Tests, Grade 3

Each chart reflects data for one year of testing.

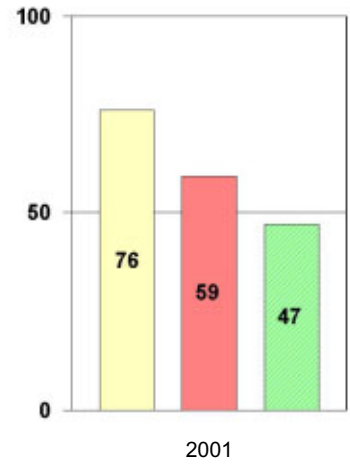
Total Reading



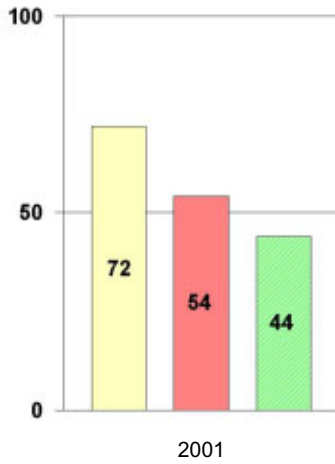
Total Mathematics



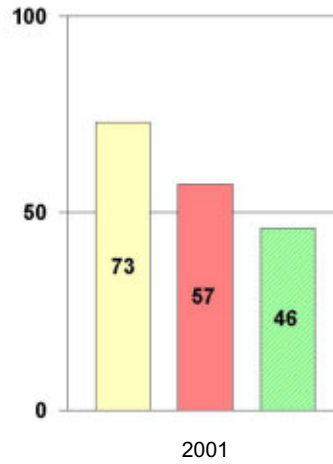
Language



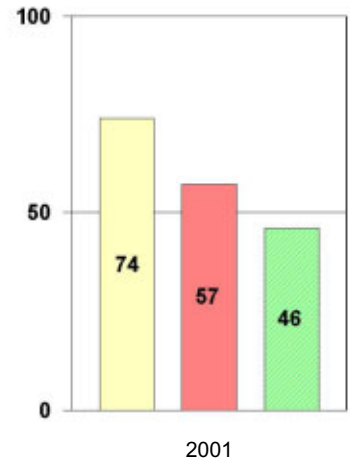
Science



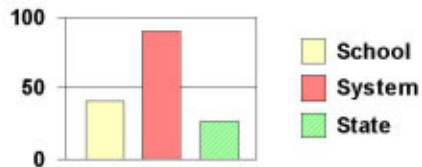
Social Science



Complete Battery



Legend



2000-2001 Georgia Public Education Report Card

Fulton County

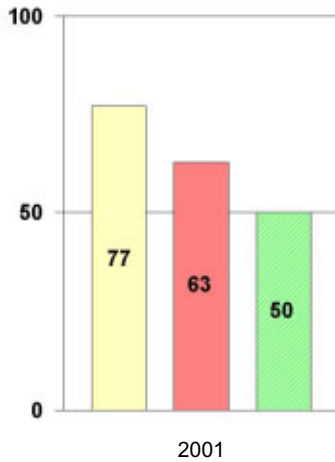
Northwood Elementary School

NORM-REFERENCED ASSESSMENTS

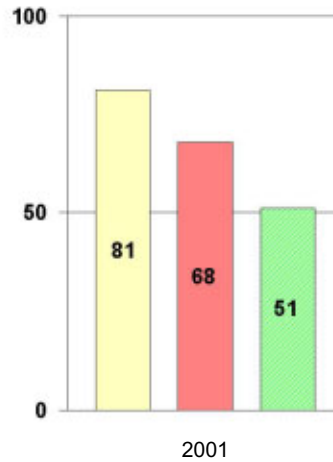
Stanford 9 Tests, Grade 5

Each chart reflects data for one year of testing.

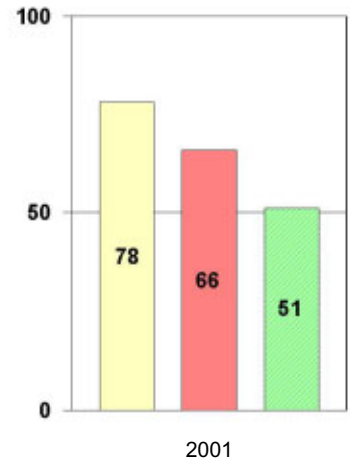
Total Reading



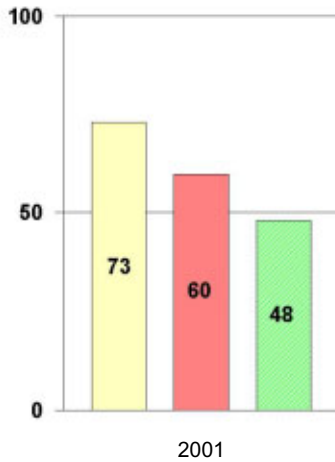
Total Mathematics



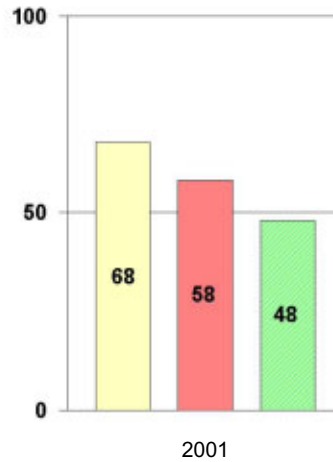
Language



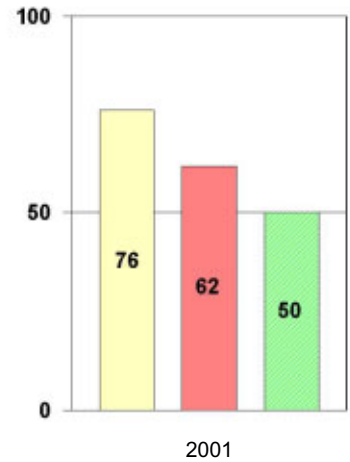
Science



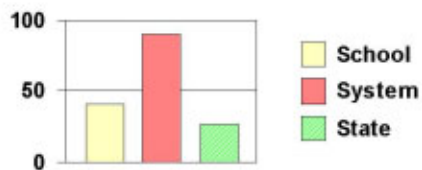
Social Science



Complete Battery



Legend



2000-2001 Georgia Public Education Report Card

Fulton County

Northwood Elementary School

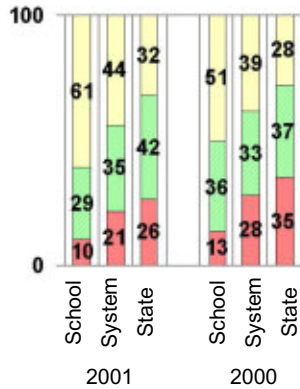
CRITERION-REFERENCED ASSESSMENTS

Criterion-Referenced Competency Tests (CRCTs)

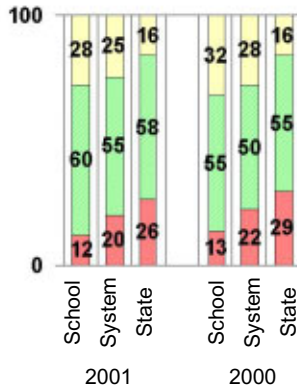
Percentage of Students Scoring in the Indicated Achievement Levels

Each chart reflects data for two years of testing.

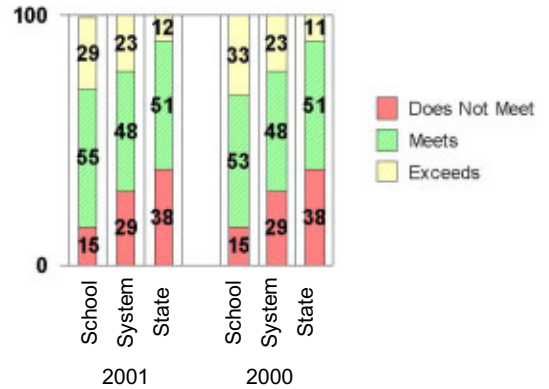
Grade 4 Reading



Grade 4 Language Arts



Grade 4 Mathematics



PERFORMANCE ASSESSMENTS

Grade 5 Writing Assessment

Percent at Developmental Stages:	2000-2001			1999-2000			1998-99		
	School	System	State	School	System	State	School	System	State
Stage 1: The Emerging Writer	1%	1%	1%	0%	1%	1%	0%	0%	1%
Stage 2: The Developing Writer	2%	2%	2%	0%	3%	2%	0%	2%	2%
Stage 3: The Focusing Writer	11%	14%	17%	10%	16%	19%	5%	14%	19%
Stage 4: The Experimenting Writer	35%	34%	42%	48%	38%	41%	32%	35%	41%
Stage 5: The Engaging Writer	37%	32%	29%	31%	29%	27%	48%	31%	27%
Stage 6: The Extending Writer	14%	17%	9%	11%	14%	9%	15%	18%	11%

2000-2001 Georgia Public Education Report Card

Fulton County

Northwood Elementary School

CERTIFIED PERSONNEL DATA

		Administrators	Support Personnel	PK-12 Teachers
Positions	Number	2.37	7.23	53.84
	Average Contract Days	232.35	194.36	190.28
Personnel	Full-time	2	5	52
	Part-time	8	10	5
Gender	Male	0	1	4
	Female	10	14	53
Certificate Level	4 Yr Bachelor's	3	5	34
	5 Yr Master's	5	7	23
	6 Yr Specialist's	1	2	0
	7 Yr Doctoral	1	1	0
	Other *	0	0	0
Years Experience	<1	0	2	5
	1-10	5	5	33
	11-20	3	4	15
	21-30	2	3	4
	>30	0	1	0
	Average	13.30	12.13	8.28

* Includes One- and Two-Year Vocational Certificates.

ACCREDITATION DATA

Accredited by Southern Association of Colleges and Schools (SACS):
Elementary/Middle Commission

AWARDS/RECOGNITION DATA

Through the Pay for Performance Program, exemplary public schools and schools making outstanding progress toward becoming exemplary may be rewarded. Not a merit pay program, the Pay for Performance Program motivates and rewards entire school faculties for working together to make their schools exemplary. A school selected for participation in the program has one school year to attain at least 80% of its previously-approved performance objectives in order to receive an award based on \$2,000 per certified faculty member.

Northwood Elementary School was a Pay for Performance recipient for the 2000-2001 cycle.