

2000-2001 Georgia Public Education Report Card

Fulton County

Northwestern Middle School - 6600597

Grade Range - 6-8

The Georgia Public Education Report Card is designed to assist systems and schools in educational improvement. This report card contains a variety of data elements. An explanation of the terms is provided as a companion to the report card data. Please refer to the definitions for the most effective use of the reported data.

STUDENT DATA

Total Enrollment, by Race/Ethnicity and Gender

Total		Black	White	Hispanic	Asian	American Indian	Multi-Racial	Male	Female
6-8:	1,987	126	1,715	50	65	1	30	1,029	958
		6.3%	86.3%	2.5%	3.3%	0.1%	1.5%	51.8%	48.2%

Enrollment in Selected Programs

Program	Program Enrollment	% of Student Population
Gifted (Grades K-12)	663	33.4%
Vocational Labs (Grades 9-12)	0	0.0%
Alternative Programs (Grades K-12)	1	0.1%

Enrollment in Compensatory Programs

Program	Program Enrollment	% of Student Population
Special Education (Grades K-12) (PK)	199 0	10.0% N/A
English to Speakers of Other Languages (ESOL) (Grades K-12)	0	0.0%
Title I (Grades K-12)	This School has no Title I Program.	

Students Eligible to Receive Free/Reduced-price Lunches

	Number	Percent
School	51	2.6%
System	21,659	31.6%

Dropout Rate for Grades 6-8

	Number	Percent
School	0	0.0%
System	44	0.2%

Retained Students, by Race/Ethnicity and Gender

Total	Black	White	Hispanic	Asian	American Indian	Multi-Racial	Male	Female
20	1	17	2	0	0	0	12	8
	5.0%	85.0%	10.0%	0.0%	0.0%	0.0%	60.0%	40.0%

2000-2001 Georgia Public Education Report Card

Fulton County

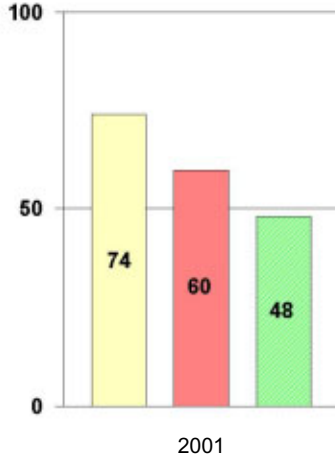
Northwestern Middle School

NORM-REFERENCED ASSESSMENTS

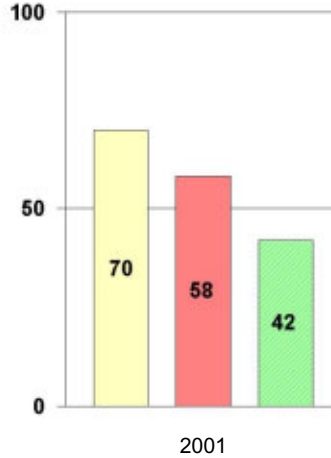
Stanford 9 Tests, Grade 8

Each chart reflects data for one year of testing.

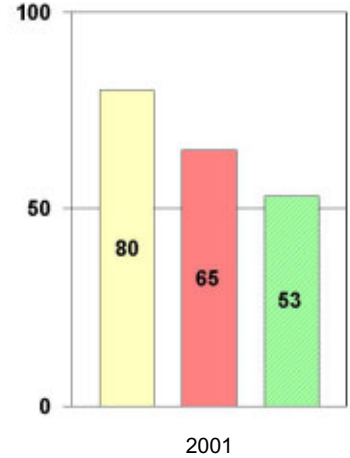
Total Reading



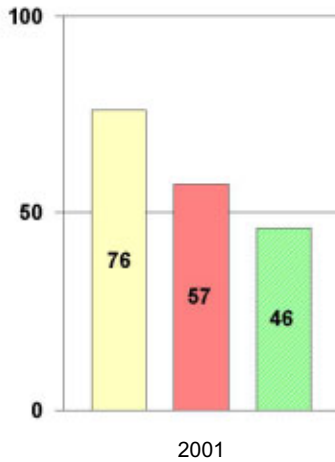
Total Mathematics



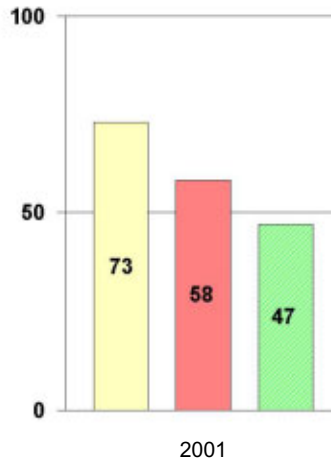
Language



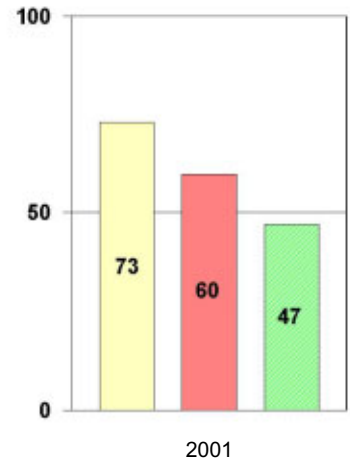
Science



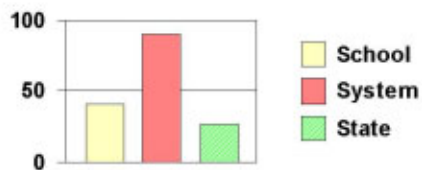
Social Science



Complete Battery



Legend



2000-2001 Georgia Public Education Report Card

Fulton County

Northwestern Middle School

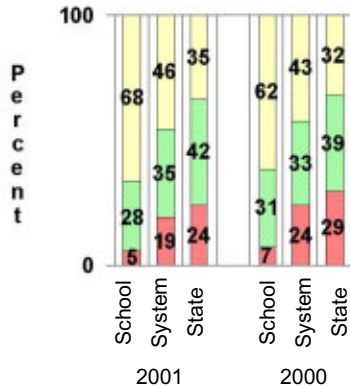
CRITERION-REFERENCED ASSESSMENTS

Criterion-Referenced Competency Tests (CRCTs)

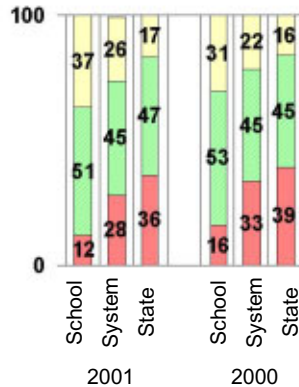
Percentage of Students Scoring in the Indicated Achievement Levels

Each chart reflects data for two years of testing.

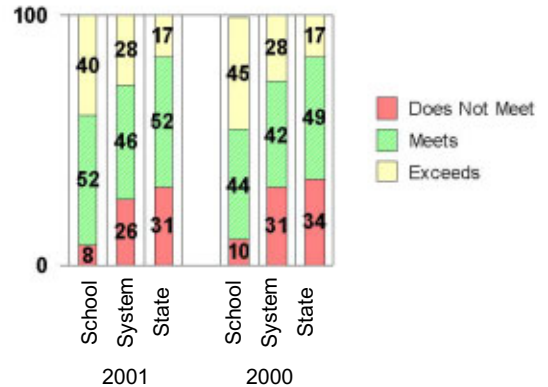
Grade 6 Reading



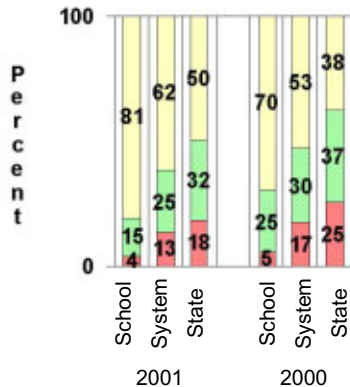
Grade 6 Language Arts



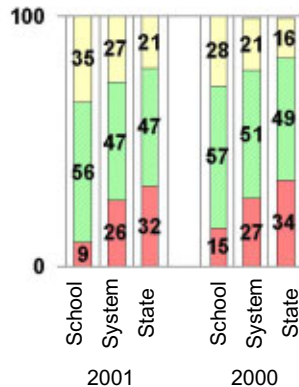
Grade 6 Mathematics



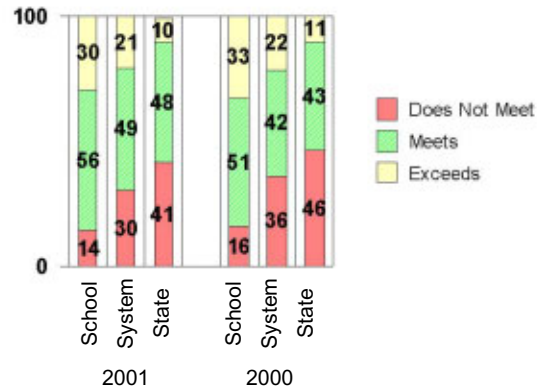
Grade 8 Reading



Grade 8 Language Arts



Grade 8 Mathematics



PERFORMANCE ASSESSMENTS

Grade 8 Writing Assessment

		2000-2001			1999-2000		
Categories of Scaled Scores:		School	System	State	School	System	State
Not on Target	(300-348)	3%	12%	17%	4%	19%	28%
On Target	(349-367)	66%	67%	72%	62%	59%	58%
Exceeds Target	(368-400)	31%	20%	12%	34%	22%	13%
Average Scaled Score: (Range 300-400)		365	360	357	364	359	354

2000-2001 Georgia Public Education Report Card

Fulton County

Northwestern Middle School

CERTIFIED PERSONNEL DATA

		Administrators	Support Personnel	PK-12 Teachers
Positions	Number	5.90	9.76	119.98
	Average Contract Days	232.34	197.53	190.00
Personnel	Full-time	5	7	119
	Part-time	17	17	2
Gender	Male	2	8	22
	Female	20	16	99
Certificate Level	4 Yr Bachelor's	6	9	69
	5 Yr Master's	12	13	46
	6 Yr Specialist's	3	2	6
	7 Yr Doctoral	1	0	0
	Other *	0	0	0
Years Experience	<1	0	0	13
	1-10	7	16	55
	11-20	10	4	33
	21-30	5	3	17
	>30	0	1	3
	Average	14.27	10.04	10.45

* Includes One- and Two-Year Vocational Certificates.

ACCREDITATION DATA

Accredited by Southern Association of Colleges and Schools (SACS):
Elementary/Middle Commission

AWARDS/RECOGNITION DATA

Schools in Georgia may receive recognition in the following programs:

- Charter School
- Pay for Performance Program
- Georgia School of Excellence
- National Blue Ribbon School

Northwestern Middle School did not receive recognition in any of these programs during the 2000-2001 school year.

For more information about these programs, contact your school principal or the school system central office.