

# 2000-2001 Georgia Public Education Report Card

## Fulton County

### New Prospect Elementary School - 6600195

Grade Range - PK-5

The Georgia Public Education Report Card is designed to assist systems and schools in educational improvement. This report card contains a variety of data elements. An explanation of the terms is provided as a companion to the report card data. Please refer to the definitions for the most effective use of the reported data.

#### STUDENT DATA

##### Total Enrollment, by Race/Ethnicity and Gender

Total	Black	White	Hispanic	Asian	American Indian	Multi-Racial	Male	Female
K-5: 842	56 6.7%	676 80.3%	11 1.3%	78 9.3%	1 0.1%	20 2.4%	434 51.5%	408 48.5%
PK: 16	1 6.3%	13 81.3%	1 6.3%	1 6.3%	0 0.0%	0 0.0%	9 56.3%	7 43.8%

##### Enrollment in Selected Programs

Program	Program Enrollment	% of Student Population
Gifted (Grades K-12)	65	7.7%
Alternative Programs (Grades K-12)	0	0.0%

##### Enrollment in Compensatory Programs

Program	Program Enrollment	% of Student Population
Special Education (Grades K-12)	112	13.3%
(PK)	24	N/A
English to Speakers of Other Languages (ESOL) (Grades K-12)	0	0.0%
Early Intervention Program (EIP) (Grades K-3)	36	6.4%
Remedial Education (Grades 4-5, 9-12)	17	6.1%
Title I (Grades K-12)	This School has no Title I Program.	

##### Students Eligible to Receive Free/Reduced-price Lunches

	Number	Percent
School	17	2.0%
System	21,659	31.6%

##### Dropout Rate \*

	Number	Percent
School	N/A	N/A
System	N/A	N/A

\* - Dropouts are not reported for grades PK-5.

##### Retained Students, by Race/Ethnicity and Gender

Total	Black	White	Hispanic	Asian	American Indian	Multi-Racial	Male	Female
13	1 7.7%	7 53.8%	0 0.0%	4 30.8%	0 0.0%	1 7.7%	8 61.5%	5 38.5%

# 2000-2001 Georgia Public Education Report Card

## Fulton County

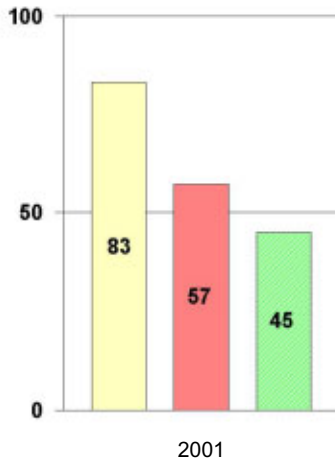
### New Prospect Elementary School

#### NORM-REFERENCED ASSESSMENTS

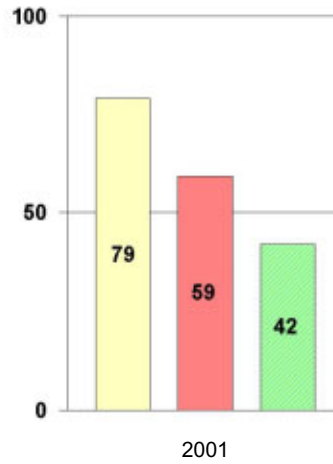
##### Stanford 9 Tests, Grade 3

Each chart reflects data for one year of testing.

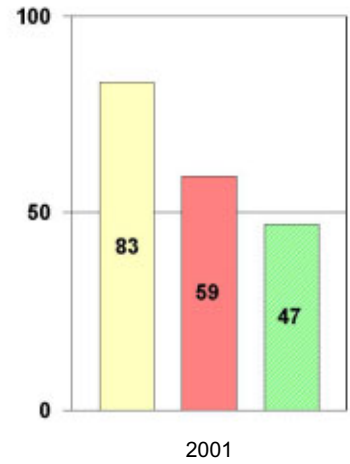
**Total Reading**



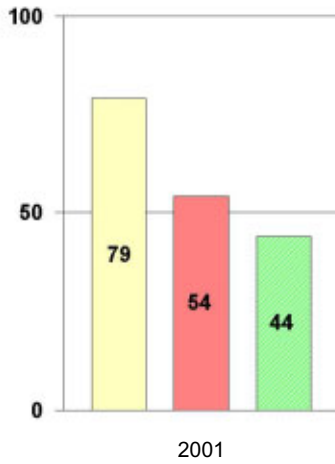
**Total Mathematics**



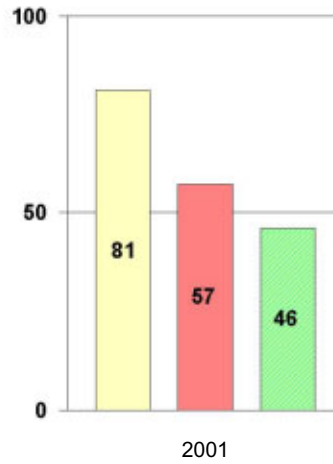
**Language**



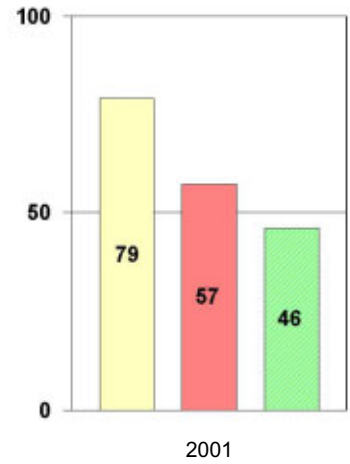
**Science**



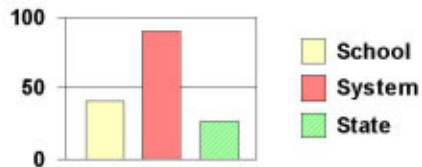
**Social Science**



**Complete Battery**



#### Legend



# 2000-2001 Georgia Public Education Report Card Fulton County

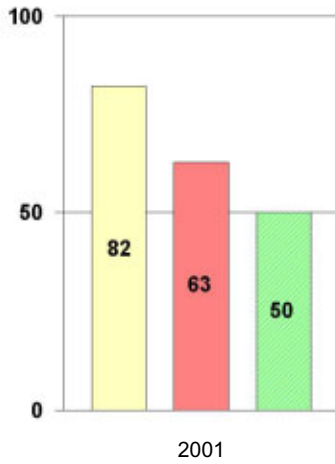
## New Prospect Elementary School

### NORM-REFERENCED ASSESSMENTS

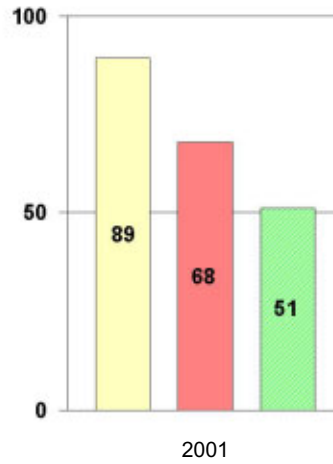
#### Stanford 9 Tests, Grade 5

Each chart reflects data for one year of testing.

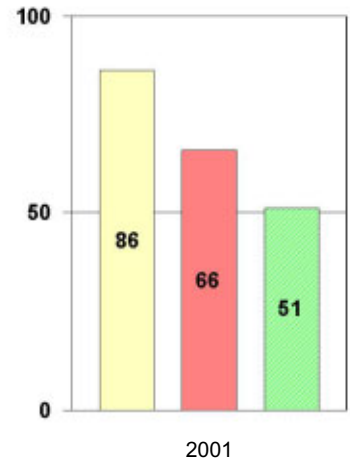
**Total Reading**



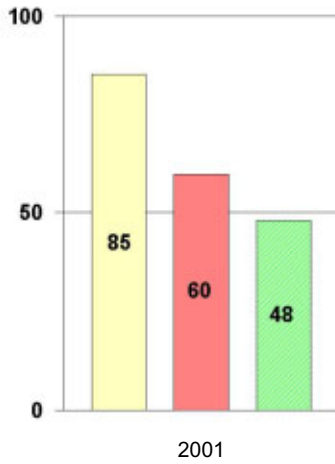
**Total Mathematics**



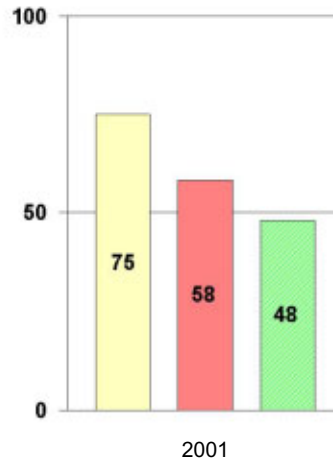
**Language**



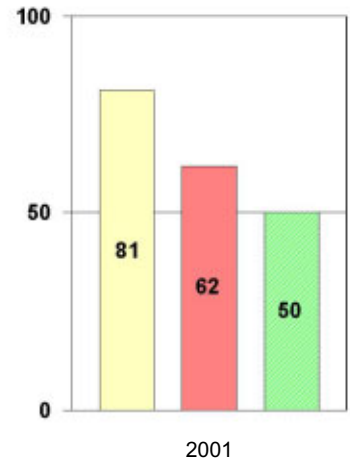
**Science**



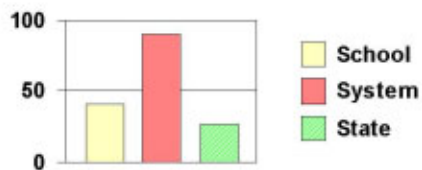
**Social Science**



**Complete Battery**



#### Legend



# 2000-2001 Georgia Public Education Report Card

## Fulton County

### New Prospect Elementary School

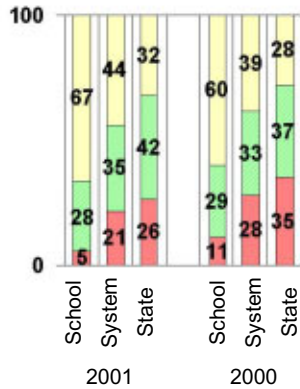
#### CRITERION-REFERENCED ASSESSMENTS

##### Criterion-Referenced Competency Tests (CRCTs)

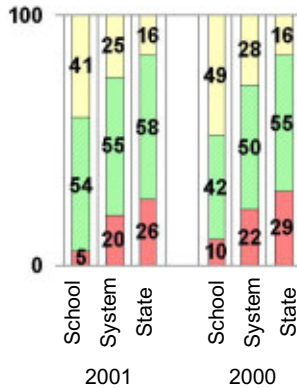
Percentage of Students Scoring in the Indicated Achievement Levels

Each chart reflects data for two years of testing.

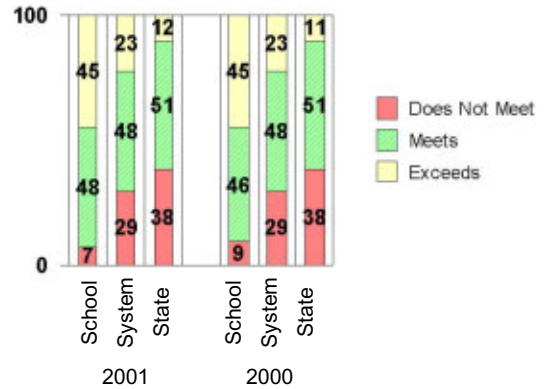
Grade 4 Reading



Grade 4 Language Arts



Grade 4 Mathematics



#### PERFORMANCE ASSESSMENTS

##### Grade 5 Writing Assessment

Percent at Developmental Stages:	2000-2001			1999-2000			1998-99		
	School	System	State	School	System	State	School	System	State
<b>Stage 1:</b> The Emerging Writer	1%	1%	1%	0%	1%	1%	0%	0%	1%
<b>Stage 2:</b> The Developing Writer	2%	2%	2%	0%	3%	2%	0%	2%	2%
<b>Stage 3:</b> The Focusing Writer	3%	14%	17%	6%	16%	19%	3%	14%	19%
<b>Stage 4:</b> The Experimenting Writer	14%	34%	42%	26%	38%	41%	30%	35%	41%
<b>Stage 5:</b> The Engaging Writer	36%	32%	29%	45%	29%	27%	32%	31%	27%
<b>Stage 6:</b> The Extending Writer	43%	17%	9%	23%	14%	9%	36%	18%	11%

# 2000-2001 Georgia Public Education Report Card

## Fulton County

### New Prospect Elementary School

#### CERTIFIED PERSONNEL DATA

		Administrators	Support Personnel	PK-12 Teachers
Positions	Number	2.37	9.95	50.60
	Average Contract Days	232.21	193.24	190.30
Personnel	Full-time	2	8	48
	Part-time	7	6	8
Gender	Male	0	0	5
	Female	9	14	51
Certificate Level	4 Yr Bachelor's	5	3	36
	5 Yr Master's	2	8	19
	6 Yr Specialist's	2	3	1
	7 Yr Doctoral	0	0	0
	Other *	0	0	0
Years Experience	<1	0	2	2
	1-10	5	9	36
	11-20	2	2	11
	21-30	2	1	6
	>30	0	0	1
	Average	9.89	6.79	8.54

\* Includes One- and Two-Year Vocational Certificates.

#### ACCREDITATION DATA

Accredited by Southern Association of Colleges and Schools (SACS):  
Elementary/Middle Commission

#### AWARDS/RECOGNITION DATA

Through the Pay for Performance Program, exemplary public schools and schools making outstanding progress toward becoming exemplary may be rewarded. Not a merit pay program, the Pay for Performance Program motivates and rewards entire school faculties for working together to make their schools exemplary. A school selected for participation in the program has one school year to attain at least 80% of its previously-approved performance objectives in order to receive an award based on \$2,000 per certified faculty member.

New Prospect Elementary School was a Pay for Performance recipient for the 2000-2001 cycle.