

# 2000-2001 Georgia Public Education Report Card

## Fulton County

### Mount Olive Elementary School - 6605060

Grade Range - PK-5

The Georgia Public Education Report Card is designed to assist systems and schools in educational improvement. This report card contains a variety of data elements. An explanation of the terms is provided as a companion to the report card data. Please refer to the definitions for the most effective use of the reported data.

#### STUDENT DATA

##### Total Enrollment, by Race/Ethnicity and Gender

Total	Black	White	Hispanic	Asian	American Indian	Multi-Racial	Male	Female
K-5: 492	472 95.9%	5 1.0%	5 1.0%	0 0.0%	0 0.0%	10 2.0%	244 49.6%	248 50.4%
PK: 52	51 98.1%	0 0.0%	1 1.9%	0 0.0%	0 0.0%	0 0.0%	24 46.2%	28 53.8%

##### Enrollment in Selected Programs

Program	Program Enrollment	% of Student Population
Gifted (Grades K-12)	10	2.0%
Alternative Programs (Grades K-12)	0	0.0%

##### Enrollment in Compensatory Programs

Program	Program Enrollment	% of Student Population
Special Education (Grades K-12) (PK)	64 1	13.0% N/A
English to Speakers of Other Languages (ESOL) (Grades K-12)	0	0.0%
Early Intervention Program (EIP) (Grades K-3)	135	41.4%
Remedial Education (Grades 4-5, 9-12)	56	33.7%
Title I (Grades K-12)	This School has a Schoolwide Title I Program.	

##### Students Eligible to Receive Free/Reduced-price Lunches

	Number	Percent
School	508	93.4%
System	21,659	31.6%

##### Dropout Rate \*

	Number	Percent
School	N/A	N/A
System	N/A	N/A

\* - Dropouts are not reported for grades PK-5.

##### Retained Students, by Race/Ethnicity and Gender

Total	Black	White	Hispanic	Asian	American Indian	Multi-Racial	Male	Female
15	14 93.3%	1 6.7%	0 0.0%	0 0.0%	0 0.0%	0 0.0%	6 40.0%	9 60.0%

# 2000-2001 Georgia Public Education Report Card

## Fulton County

### Mount Olive Elementary School

#### NORM-REFERENCED ASSESSMENTS

##### Stanford 9 Tests, Grade 3

Each chart reflects data for one year of testing.

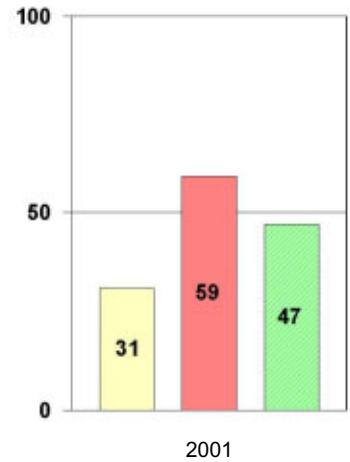
**Total Reading**



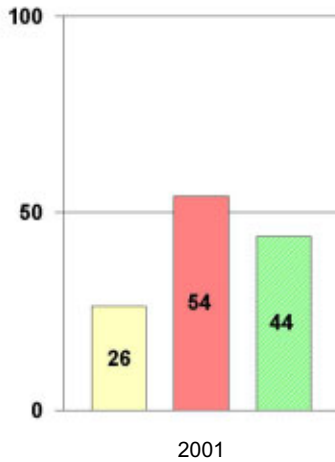
**Total Mathematics**



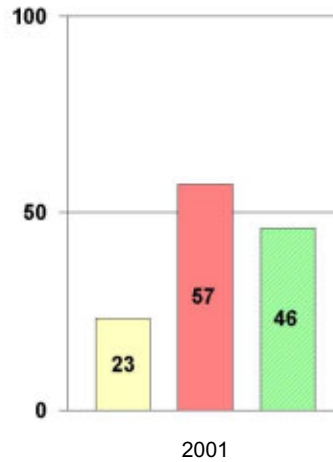
**Language**



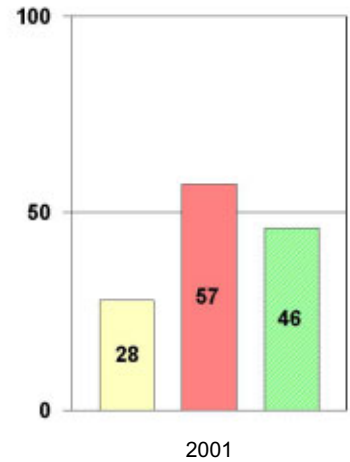
**Science**



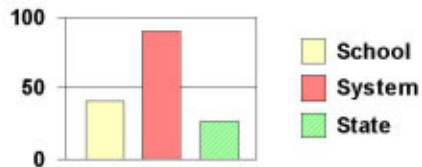
**Social Science**



**Complete Battery**



#### Legend



# 2000-2001 Georgia Public Education Report Card

## Fulton County

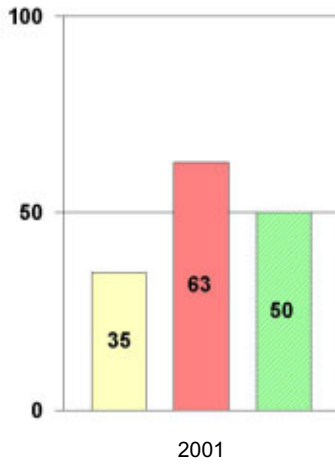
### Mount Olive Elementary School

#### NORM-REFERENCED ASSESSMENTS

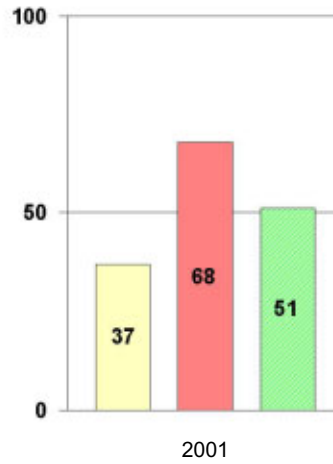
##### Stanford 9 Tests, Grade 5

Each chart reflects data for one year of testing.

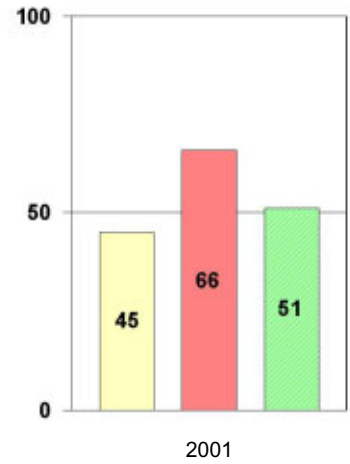
**Total Reading**



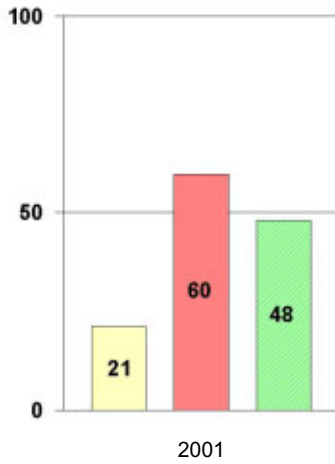
**Total Mathematics**



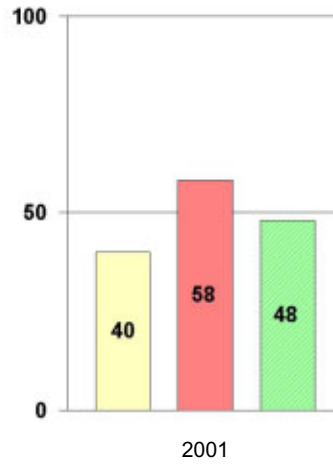
**Language**



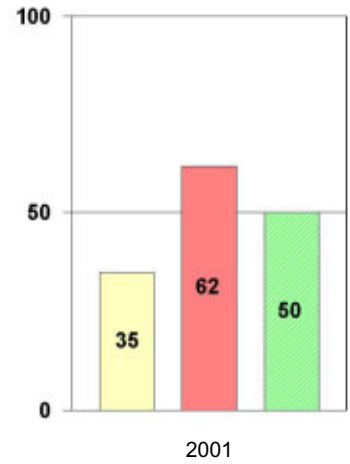
**Science**



**Social Science**



**Complete Battery**



#### Legend



# 2000-2001 Georgia Public Education Report Card

## Fulton County Mount Olive Elementary School

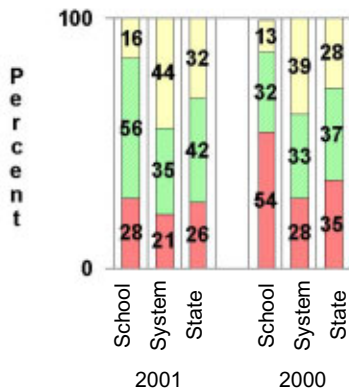
### CRITERION-REFERENCED ASSESSMENTS

#### Criterion-Referenced Competency Tests (CRCTs)

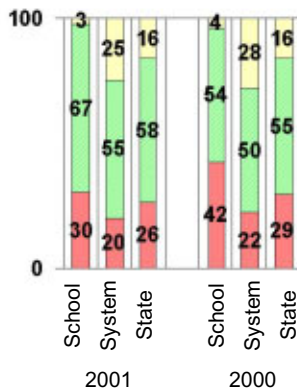
Percentage of Students Scoring in the Indicated Achievement Levels

Each chart reflects data for two years of testing.

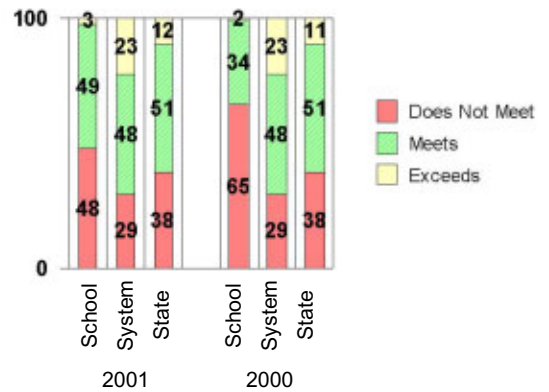
Grade 4 Reading



Grade 4 Language Arts



Grade 4 Mathematics



### PERFORMANCE ASSESSMENTS

#### Grade 5 Writing Assessment

Percent at Developmental Stages:	2000-2001			1999-2000			1998-99		
	School	System	State	School	System	State	School	System	State
<b>Stage 1:</b> The Emerging Writer	3%	1%	1%	0%	1%	1%	0%	0%	1%
<b>Stage 2:</b> The Developing Writer	0%	2%	2%	0%	3%	2%	2%	2%	2%
<b>Stage 3:</b> The Focusing Writer	16%	14%	17%	28%	16%	19%	25%	14%	19%
<b>Stage 4:</b> The Experimenting Writer	54%	34%	42%	58%	38%	41%	58%	35%	41%
<b>Stage 5:</b> The Engaging Writer	21%	32%	29%	11%	29%	27%	13%	31%	27%
<b>Stage 6:</b> The Extending Writer	6%	17%	9%	2%	14%	9%	3%	18%	11%

# 2000-2001 Georgia Public Education Report Card

## Fulton County

### Mount Olive Elementary School

#### CERTIFIED PERSONNEL DATA

		Administrators	Support Personnel	PK-12 Teachers
Positions	Number	2.33	3.63	42.29
	Average Contract Days	233.14	196.19	190.35
Personnel	Full-time	2	2	40
	Part-time	9	5	5
Gender	Male	2	1	5
	Female	9	6	40
Certificate Level	4 Yr Bachelor's	3	0	22
	5 Yr Master's	4	5	15
	6 Yr Specialist's	4	2	8
	7 Yr Doctoral	0	0	0
	Other *	0	0	0
Years Experience	<1	0	1	4
	1-10	5	3	17
	11-20	3	2	9
	21-30	1	1	9
	>30	2	0	6
	Average	14.64	9.14	14.09

\* Includes One- and Two-Year Vocational Certificates.

#### ACCREDITATION DATA

Accredited by Southern Association of Colleges and Schools (SACS):  
Elementary/Middle Commission

#### AWARDS/RECOGNITION DATA

Schools in Georgia may receive recognition in the following programs:

- Charter School
- Pay for Performance Program
- Georgia School of Excellence
- National Blue Ribbon School

Mount Olive Elementary School did not receive recognition in any of these programs during the 2000-2001 school year.

For more information about these programs, contact your school principal or the school system central office.