

2000-2001 Georgia Public Education Report Card

Fulton County

Mountain Park Elementary School - 6600373

Grade Range - PK-5

The Georgia Public Education Report Card is designed to assist systems and schools in educational improvement. This report card contains a variety of data elements. An explanation of the terms is provided as a companion to the report card data. Please refer to the definitions for the most effective use of the reported data.

STUDENT DATA

Total Enrollment, by Race/Ethnicity and Gender

Total	Black	White	Hispanic	Asian	American Indian	Multi-Racial	Male	Female
K-5: 761	40 5.3%	679 89.2%	9 1.2%	17 2.2%	0 0.0%	16 2.1%	370 48.6%	391 51.4%
PK: 16	5 31.3%	9 56.3%	1 6.3%	1 6.3%	0 0.0%	0 0.0%	15 93.8%	1 6.3%

Enrollment in Selected Programs

Program	Program Enrollment	% of Student Population
Gifted (Grades K-12)	119	15.6%
Alternative Programs (Grades K-12)	0	0.0%

Enrollment in Compensatory Programs

Program	Program Enrollment	% of Student Population
Special Education (Grades K-12) (PK)	132 16	17.3% N/A
English to Speakers of Other Languages (ESOL) (Grades K-12)	0	0.0%
Early Intervention Program (EIP) (Grades K-3)	18	3.6%
Remedial Education (Grades 4-5, 9-12)	16	6.1%
Title I (Grades K-12)	This School has no Title I Program.	

Students Eligible to Receive Free/Reduced-price Lunches

	Number	Percent
School	30	3.9%
System	21,659	31.6%

Dropout Rate *

	Number	Percent
School	N/A	N/A
System	N/A	N/A

* - Dropouts are not reported for grades PK-5.

Retained Students, by Race/Ethnicity and Gender

Total	Black	White	Hispanic	Asian	American Indian	Multi-Racial	Male	Female
0	0	0	0	0	0	0	0	0

2000-2001 Georgia Public Education Report Card

Fulton County

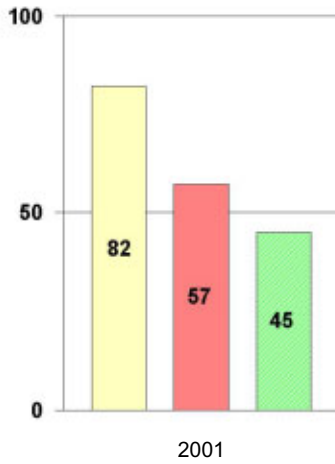
Mountain Park Elementary School

NORM-REFERENCED ASSESSMENTS

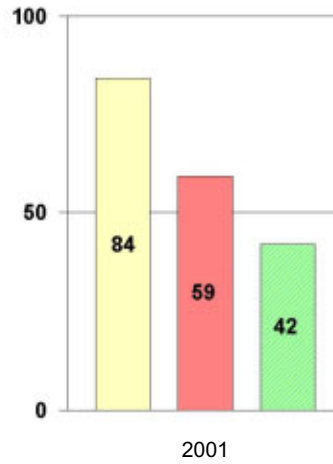
Stanford 9 Tests, Grade 3

Each chart reflects data for one year of testing.

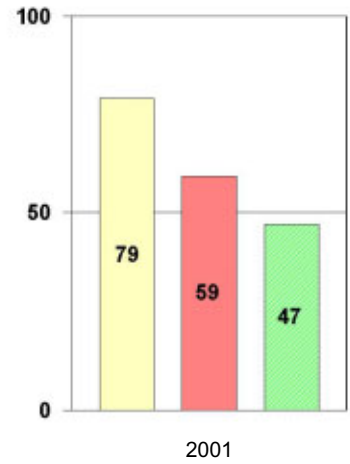
Total Reading



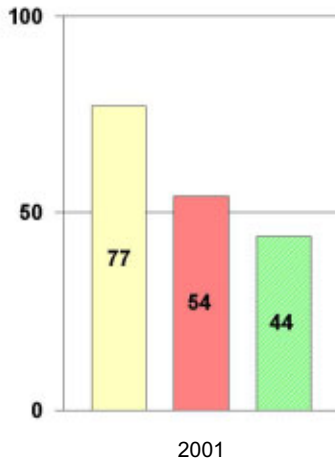
Total Mathematics



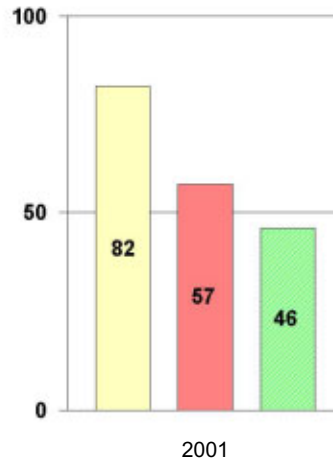
Language



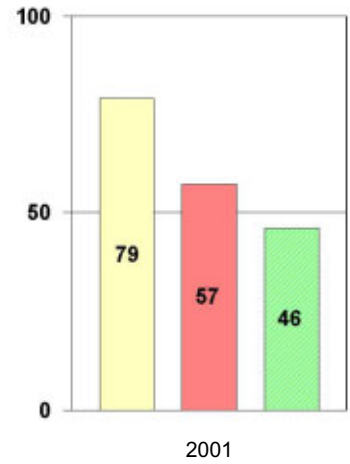
Science



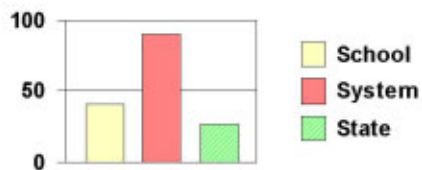
Social Science



Complete Battery



Legend



2000-2001 Georgia Public Education Report Card

Fulton County

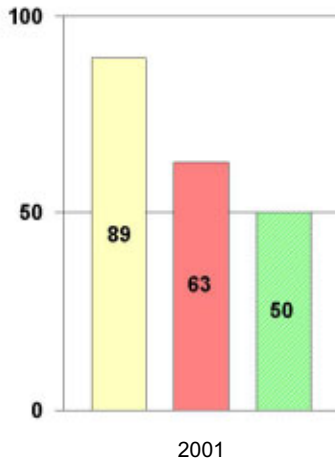
Mountain Park Elementary School

NORM-REFERENCED ASSESSMENTS

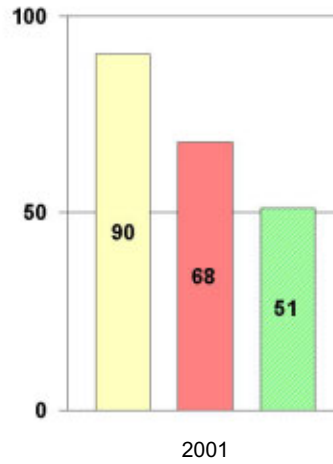
Stanford 9 Tests, Grade 5

Each chart reflects data for one year of testing.

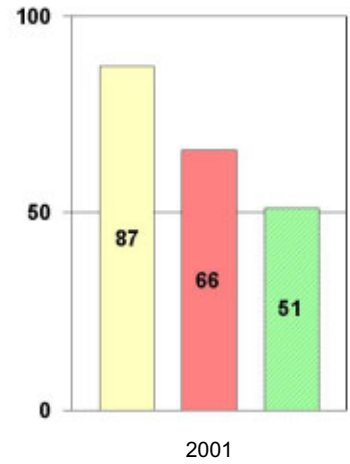
Total Reading



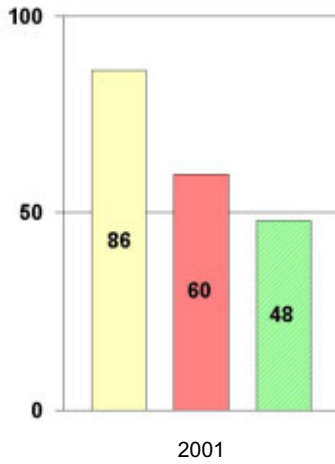
Total Mathematics



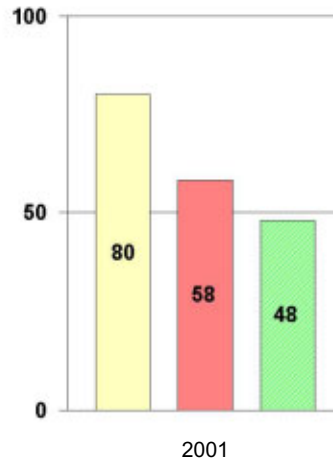
Language



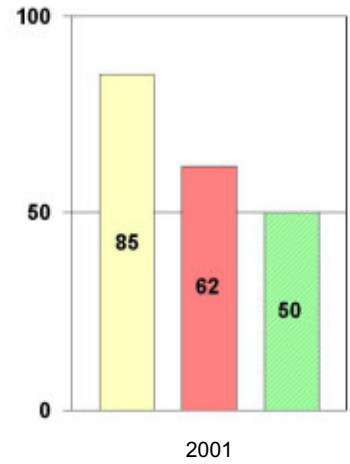
Science



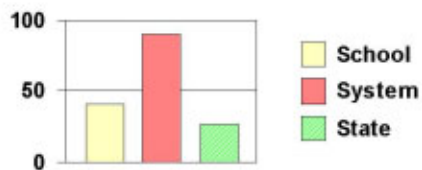
Social Science



Complete Battery



Legend



2000-2001 Georgia Public Education Report Card

Fulton County

Mountain Park Elementary School

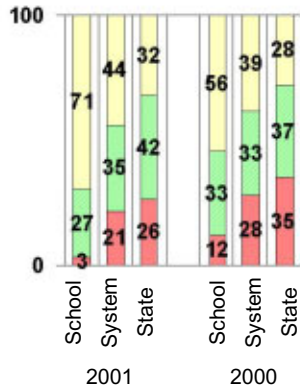
CRITERION-REFERENCED ASSESSMENTS

Criterion-Referenced Competency Tests (CRCTs)

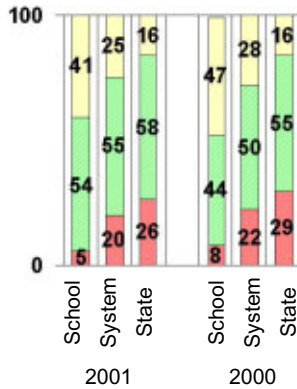
Percentage of Students Scoring in the Indicated Achievement Levels

Each chart reflects data for two years of testing.

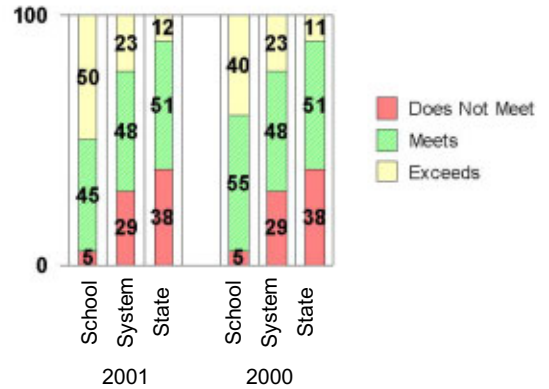
Grade 4 Reading



Grade 4 Language Arts



Grade 4 Mathematics



PERFORMANCE ASSESSMENTS

Grade 5 Writing Assessment

Percent at Developmental Stages:	2000-2001			1999-2000			1998-99		
	School	System	State	School	System	State	School	System	State
Stage 1: The Emerging Writer	0%	1%	1%	0%	1%	1%	0%	0%	1%
Stage 2: The Developing Writer	0%	2%	2%	1%	3%	2%	0%	2%	2%
Stage 3: The Focusing Writer	3%	14%	17%	3%	16%	19%	2%	14%	19%
Stage 4: The Experimenting Writer	22%	34%	42%	24%	38%	41%	22%	35%	41%
Stage 5: The Engaging Writer	28%	32%	29%	40%	29%	27%	44%	31%	27%
Stage 6: The Extending Writer	47%	17%	9%	33%	14%	9%	32%	18%	11%

2000-2001 Georgia Public Education Report Card

Fulton County

Mountain Park Elementary School

CERTIFIED PERSONNEL DATA

		Administrators	Support Personnel	PK-12 Teachers
Positions	Number	2.32	5.90	49.12
	Average Contract Days	233.08	195.14	190.46
Personnel	Full-time	2	4	47
	Part-time	8	7	9
Gender	Male	1	0	2
	Female	9	11	54
Certificate Level	4 Yr Bachelor's	4	0	25
	5 Yr Master's	4	8	29
	6 Yr Specialist's	2	3	2
	7 Yr Doctoral	0	0	0
	Other *	0	0	0
Years Experience	<1	0	0	1
	1-10	2	4	23
	11-20	5	2	12
	21-30	3	4	16
	>30	0	1	4
	Average	18.50	16.64	15.05

* Includes One- and Two-Year Vocational Certificates.

ACCREDITATION DATA

Accredited by Southern Association of Colleges and Schools (SACS):
Elementary/Middle Commission

AWARDS/RECOGNITION DATA

The Georgia School of Excellence Program recognizes exemplary schools that have excellent, successful programs in many areas of school life. Each year, in a statewide competition, one elementary, one middle, and one high school from each of Georgia's 11 congressional districts may be selected for this honor.

Mountain Park Elementary School was designated a 2000-2001 Georgia School of Excellence.