

2000-2001 Georgia Public Education Report Card

Fulton County

Mimosa Elementary School - 6604060

Grade Range - PK-5

The Georgia Public Education Report Card is designed to assist systems and schools in educational improvement. This report card contains a variety of data elements. An explanation of the terms is provided as a companion to the report card data. Please refer to the definitions for the most effective use of the reported data.

STUDENT DATA

Total Enrollment, by Race/Ethnicity and Gender

Total	Black	White	Hispanic	Asian	American Indian	Multi-Racial	Male	Female
K-5: 670	119 17.8%	229 34.2%	262 39.1%	28 4.2%	0 0.0%	32 4.8%	355 53.0%	315 47.0%
PK: 40	4 10.0%	4 10.0%	29 72.5%	3 7.5%	0 0.0%	0 0.0%	20 50.0%	20 50.0%

Enrollment in Selected Programs

Program	Program Enrollment	% of Student Population
Gifted (Grades K-12)	33	4.9%
Alternative Programs (Grades K-12)	0	0.0%

Enrollment in Compensatory Programs

Program	Program Enrollment	% of Student Population
Special Education (Grades K-12) (PK)	91 1	13.6% N/A
English to Speakers of Other Languages (ESOL) (Grades K-12)	166	24.8%
Early Intervention Program (EIP) (Grades K-3)	202	45.3%
Remedial Education (Grades 4-5, 9-12)	49	21.9%
Title I (Grades K-12)	This School has no Title I Program.	

Students Eligible to Receive Free/Reduced-price Lunches

	Number	Percent
School	389	54.8%
System	21,659	31.6%

Dropout Rate *

	Number	Percent
School	N/A	N/A
System	N/A	N/A

* - Dropouts are not reported for grades PK-5.

Retained Students, by Race/Ethnicity and Gender

Total	Black	White	Hispanic	Asian	American Indian	Multi-Racial	Male	Female
18	0 0.0%	2 11.1%	15 83.3%	0 0.0%	0 0.0%	1 5.6%	8 44.4%	10 55.6%

2000-2001 Georgia Public Education Report Card

Fulton County

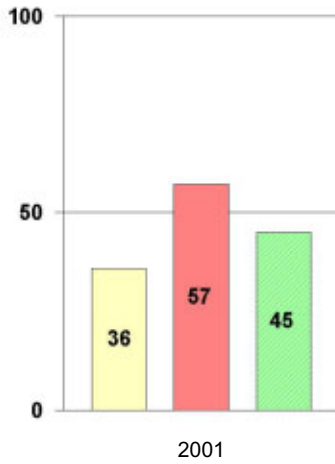
Mimosa Elementary School

NORM-REFERENCED ASSESSMENTS

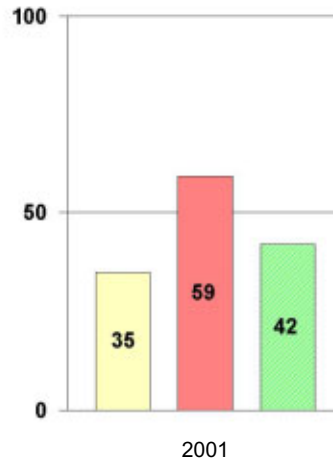
Stanford 9 Tests, Grade 3

Each chart reflects data for one year of testing.

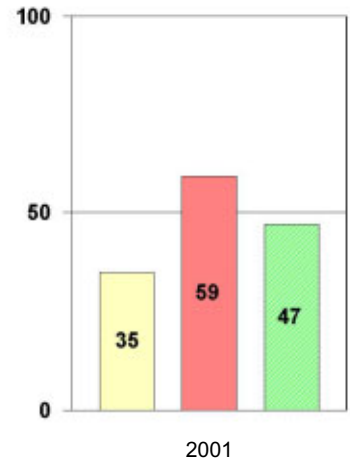
Total Reading



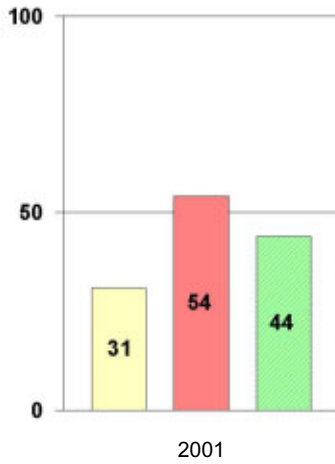
Total Mathematics



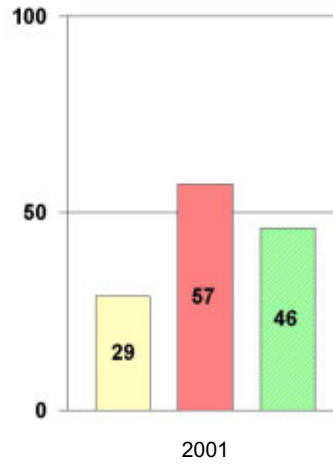
Language



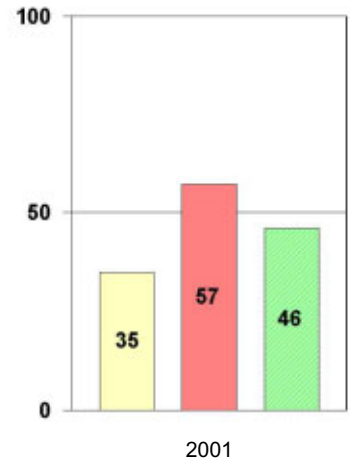
Science



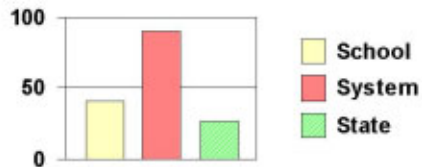
Social Science



Complete Battery



Legend



2000-2001 Georgia Public Education Report Card

Fulton County

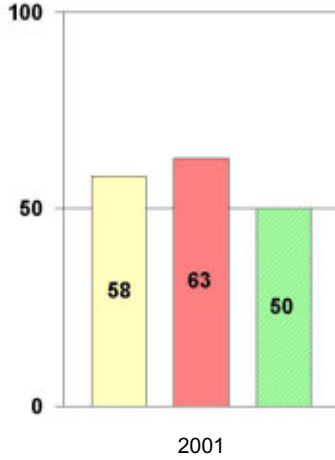
Mimosa Elementary School

NORM-REFERENCED ASSESSMENTS

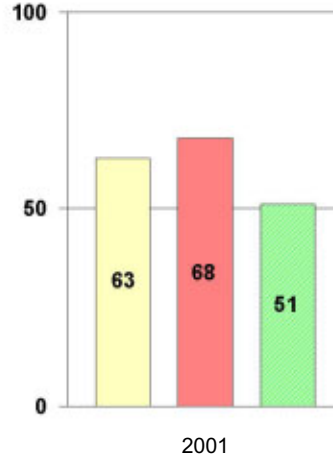
Stanford 9 Tests, Grade 5

Each chart reflects data for one year of testing.

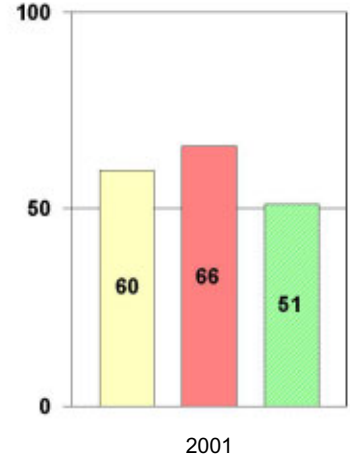
Total Reading



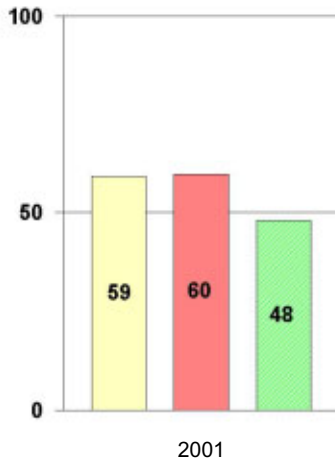
Total Mathematics



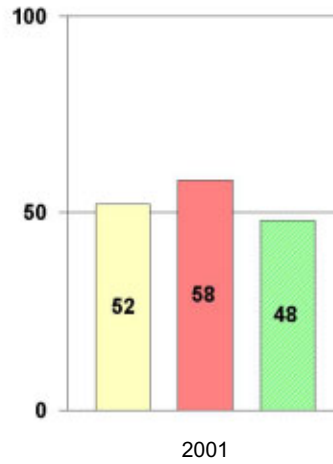
Language



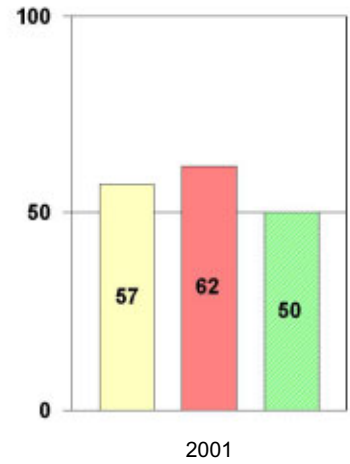
Science



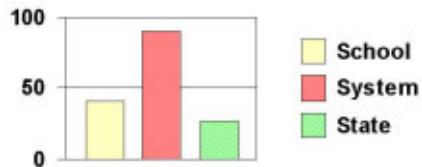
Social Science



Complete Battery



Legend



2000-2001 Georgia Public Education Report Card

Fulton County Mimosa Elementary School

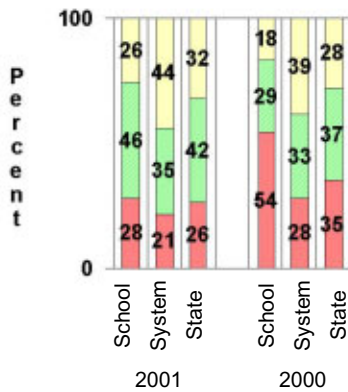
CRITERION-REFERENCED ASSESSMENTS

Criterion-Referenced Competency Tests (CRCTs)

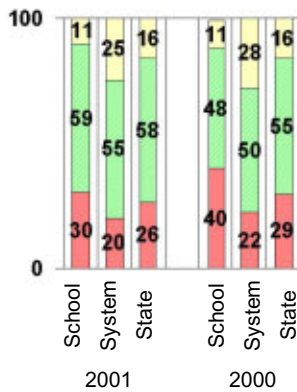
Percentage of Students Scoring in the Indicated Achievement Levels

Each chart reflects data for two years of testing.

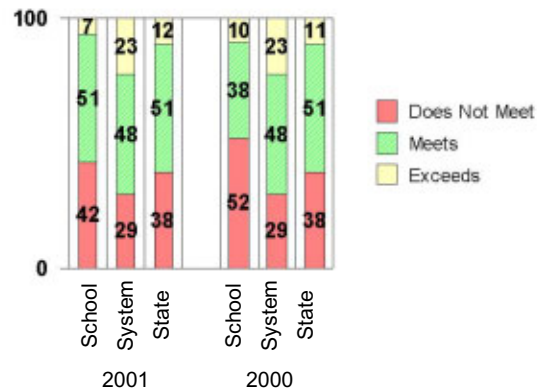
Grade 4 Reading



Grade 4 Language Arts



Grade 4 Mathematics



PERFORMANCE ASSESSMENTS

Grade 5 Writing Assessment

Percent at Developmental Stages:	2000-2001			1999-2000			1998-99		
	School	System	State	School	System	State	School	System	State
Stage 1: The Emerging Writer	3%	1%	1%	4%	1%	1%	1%	0%	1%
Stage 2: The Developing Writer	9%	2%	2%	4%	3%	2%	3%	2%	2%
Stage 3: The Focusing Writer	17%	14%	17%	13%	16%	19%	11%	14%	19%
Stage 4: The Experimenting Writer	31%	34%	42%	30%	38%	41%	26%	35%	41%
Stage 5: The Engaging Writer	25%	32%	29%	28%	29%	27%	37%	31%	27%
Stage 6: The Extending Writer	15%	17%	9%	22%	14%	9%	22%	18%	11%

2000-2001 Georgia Public Education Report Card

Fulton County

Mimosa Elementary School

CERTIFIED PERSONNEL DATA

		Administrators	Support Personnel	PK-12 Teachers
Positions	Number	2.27	5.72	60.55
	Average Contract Days	234.00	193.85	190.25
Personnel	Full-time	2	5	59
	Part-time	7	5	7
Gender	Male	0	1	10
	Female	9	9	56
Certificate Level	4 Yr Bachelor's	3	1	28
	5 Yr Master's	4	7	38
	6 Yr Specialist's	2	2	0
	7 Yr Doctoral	0	0	0
	Other *	0	0	0
Years Experience	<1	0	1	7
	1-10	2	4	33
	11-20	4	3	12
	21-30	3	2	13
	>30	0	0	1
	Average	16.67	11.00	10.08

* Includes One- and Two-Year Vocational Certificates.

ACCREDITATION DATA

Accredited by Southern Association of Colleges and Schools (SACS):
Elementary/Middle Commission

AWARDS/RECOGNITION DATA

Schools in Georgia may receive recognition in the following programs:

- Charter School
- Pay for Performance Program
- Georgia School of Excellence
- National Blue Ribbon School

Mimosa Elementary School did not receive recognition in any of these programs during the 2000-2001 school year.

For more information about these programs, contact your school principal or the school system central office.