

2000-2001 Georgia Public Education Report Card

Fulton County

Medlock Bridge Elementary School - 6600491

Grade Range - PK-5

The Georgia Public Education Report Card is designed to assist systems and schools in educational improvement. This report card contains a variety of data elements. An explanation of the terms is provided as a companion to the report card data. Please refer to the definitions for the most effective use of the reported data.

STUDENT DATA

Total Enrollment, by Race/Ethnicity and Gender

Total	Black	White	Hispanic	Asian	American Indian	Multi-Racial	Male	Female
K-5: 793	58 7.3%	521 65.7%	17 2.1%	174 21.9%	0 0.0%	23 2.9%	405 51.1%	388 48.9%
PK: 24	2 8.3%	19 79.2%	0 0.0%	3 12.5%	0 0.0%	0 0.0%	8 33.3%	16 66.7%

Enrollment in Selected Programs

Program	Program Enrollment	% of Student Population
Gifted (Grades K-12)	100	12.6%
Alternative Programs (Grades K-12)	0	0.0%

Enrollment in Compensatory Programs

Program	Program Enrollment	% of Student Population
Special Education (Grades K-12) (PK)	91 4	11.5% N/A
English to Speakers of Other Languages (ESOL) (Grades K-12)	32	4.0%
Early Intervention Program (EIP) (Grades K-3)	89	17.8%
Remedial Education (Grades 4-5, 9-12)	40	13.6%
Title I (Grades K-12)	This School has no Title I Program.	

Students Eligible to Receive Free/Reduced-price Lunches

	Number	Percent
School	35	4.3%
System	21,659	31.6%

Dropout Rate *

	Number	Percent
School	N/A	N/A
System	N/A	N/A

* - Dropouts are not reported for grades PK-5.

Retained Students, by Race/Ethnicity and Gender

Total	Black	White	Hispanic	Asian	American Indian	Multi-Racial	Male	Female
5	2 40.0%	2 40.0%	0 0.0%	1 20.0%	0 0.0%	0 0.0%	4 80.0%	1 20.0%

2000-2001 Georgia Public Education Report Card

Fulton County

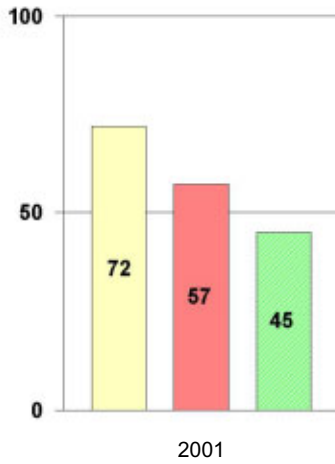
Medlock Bridge Elementary School

NORM-REFERENCED ASSESSMENTS

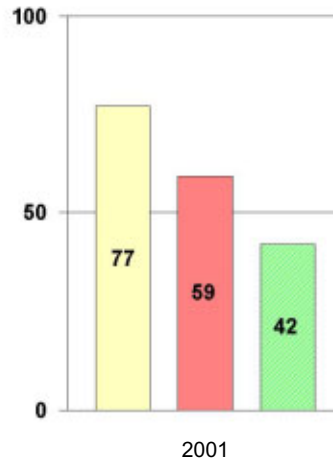
Stanford 9 Tests, Grade 3

Each chart reflects data for one year of testing.

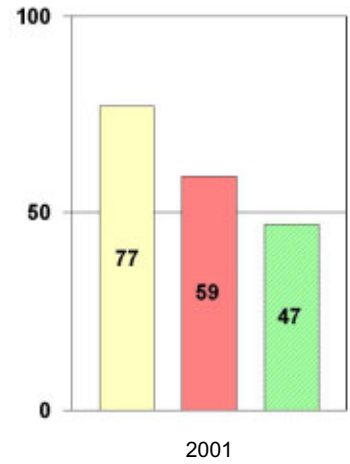
Total Reading



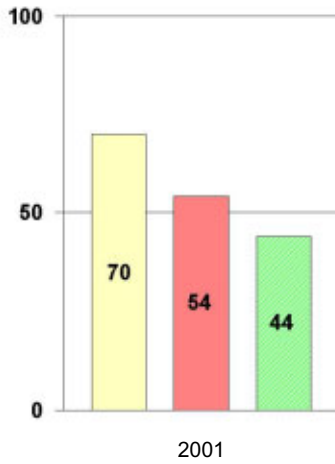
Total Mathematics



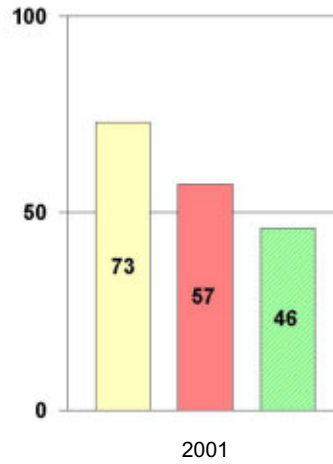
Language



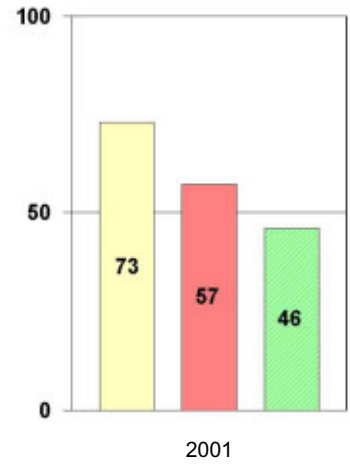
Science



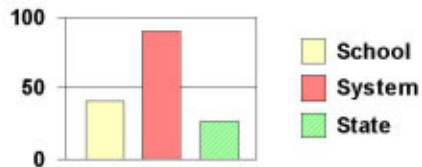
Social Science



Complete Battery



Legend



2000-2001 Georgia Public Education Report Card

Fulton County

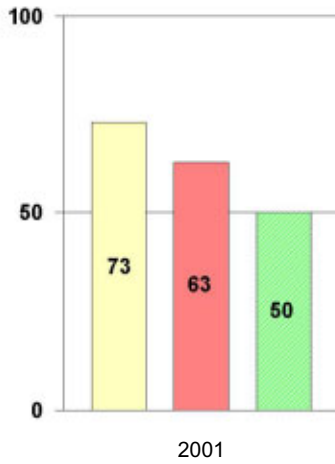
Medlock Bridge Elementary School

NORM-REFERENCED ASSESSMENTS

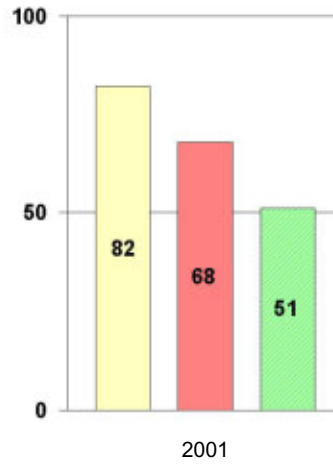
Stanford 9 Tests, Grade 5

Each chart reflects data for one year of testing.

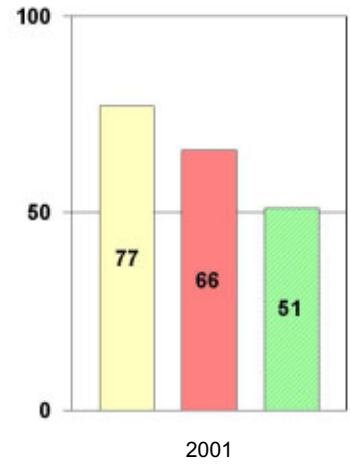
Total Reading



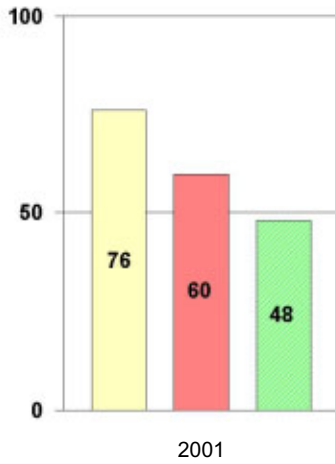
Total Mathematics



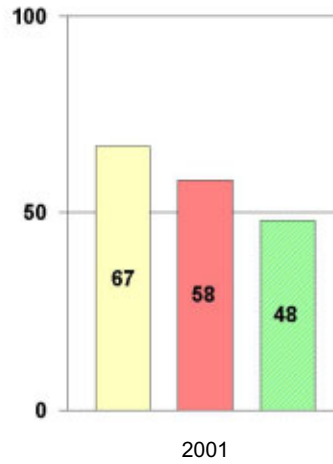
Language



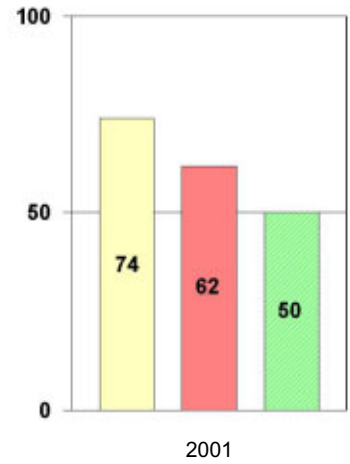
Science



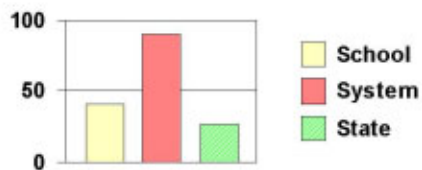
Social Science



Complete Battery



Legend



2000-2001 Georgia Public Education Report Card

Fulton County

Medlock Bridge Elementary School

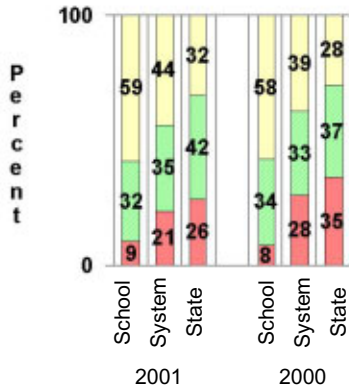
CRITERION-REFERENCED ASSESSMENTS

Criterion-Referenced Competency Tests (CRCTs)

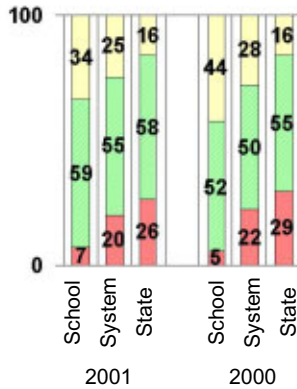
Percentage of Students Scoring in the Indicated Achievement Levels

Each chart reflects data for two years of testing.

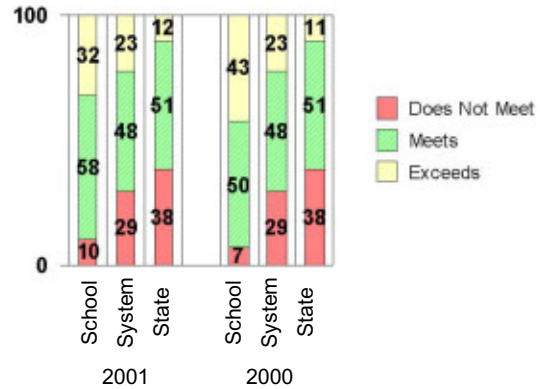
Grade 4 Reading



Grade 4 Language Arts



Grade 4 Mathematics



PERFORMANCE ASSESSMENTS

Grade 5 Writing Assessment

Percent at Developmental Stages:	2000-2001			1999-2000			1998-99		
	School	System	State	School	System	State	School	System	State
Stage 1: The Emerging Writer	0%	1%	1%	0%	1%	1%	0%	0%	1%
Stage 2: The Developing Writer	0%	2%	2%	0%	3%	2%	0%	2%	2%
Stage 3: The Focusing Writer	5%	14%	17%	2%	16%	19%	6%	14%	19%
Stage 4: The Experimenting Writer	28%	34%	42%	20%	38%	41%	23%	35%	41%
Stage 5: The Engaging Writer	49%	32%	29%	53%	29%	27%	34%	31%	27%
Stage 6: The Extending Writer	18%	17%	9%	24%	14%	9%	37%	18%	11%

2000-2001 Georgia Public Education Report Card

Fulton County

Medlock Bridge Elementary School

CERTIFIED PERSONNEL DATA

		Administrators	Support Personnel	PK-12 Teachers
Positions	Number	2.32	4.82	50.78
	Average Contract Days	233.14	195.59	190.30
Personnel	Full-time	2	3	47
	Part-time	7	8	9
Gender	Male	0	0	7
	Female	9	11	49
Certificate Level	4 Yr Bachelor's	3	2	31
	5 Yr Master's	3	8	22
	6 Yr Specialist's	3	1	3
	7 Yr Doctoral	0	0	0
	Other *	0	0	0
Years Experience	<1	0	2	12
	1-10	3	6	23
	11-20	3	2	11
	21-30	3	1	10
	>30	0	0	0
	Average	14.33	7.55	8.70

* Includes One- and Two-Year Vocational Certificates.

ACCREDITATION DATA

Accredited by Southern Association of Colleges and Schools (SACS):
Elementary/Middle Commission

AWARDS/RECOGNITION DATA

Schools in Georgia may receive recognition in the following programs:

- Charter School
- Pay for Performance Program
- Georgia School of Excellence
- National Blue Ribbon School

Medlock Bridge Elementary School did not receive recognition in any of these programs during the 2000-2001 school year.

For more information about these programs, contact your school principal or the school system central office.