

2000-2001 Georgia Public Education Report Card

Fulton County

McClarín Alternative School - 6600383

Grade Range - 6-12

The Georgia Public Education Report Card is designed to assist systems and schools in educational improvement. This report card contains a variety of data elements. An explanation of the terms is provided as a companion to the report card data. Please refer to the definitions for the most effective use of the reported data.

STUDENT DATA

Total Enrollment, by Race/Ethnicity and Gender

Total		Black	White	Hispanic	Asian	American Indian	Multi-Racial	Male	Female
6-12:	421	402	12	3	0	0	4	249	172
		95.5%	2.9%	0.7%	0.0%	0.0%	1.0%	59.1%	40.9%

Enrollment in Selected Programs

Program	Program Enrollment	% of Student Population
Gifted (Grades K-12)	0	0.0%
Vocational Labs (Grades 9-12)	179	50.9%
Alternative Programs (Grades K-12)	79	18.8%

Enrollment in Compensatory Programs

Program	Program Enrollment	% of Student Population
Special Education (Grades K-12) (PK)	63 0	15.0% N/A
English to Speakers of Other Languages (ESOL) (Grades K-12)	0	0.0%
Remedial Education (Grades 4-5, 9-12)	0	0.0%
Title I (Grades K-12) This School has no Title I Program.		

Students Eligible to Receive Free/Reduced-price Lunches

	Number	Percent
School	0	0.0%
System	21,659	31.6%

Dropout Rate for Grades 6-12

	Number	Percent
School	191	23.3%
System	964	2.4%

Retained Students, by Race/Ethnicity and Gender

Total	Black	White	Hispanic	Asian	American Indian	Multi-Racial	Male	Female
205	197	5	1	0	0	2	133	72
	96.1%	2.4%	0.5%	0.0%	0.0%	1.0%	64.9%	35.1%

2000-2001 Georgia Public Education Report Card

Fulton County

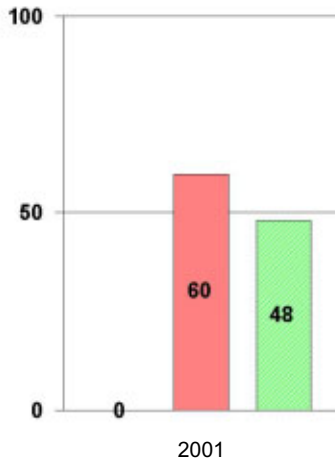
McClarin Alternative School

NORM-REFERENCED ASSESSMENTS

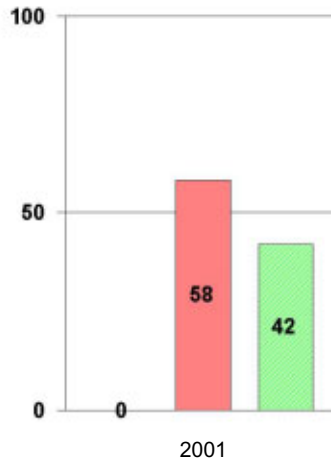
Stanford 9 Tests, Grade 8

Each chart reflects data for one year of testing.

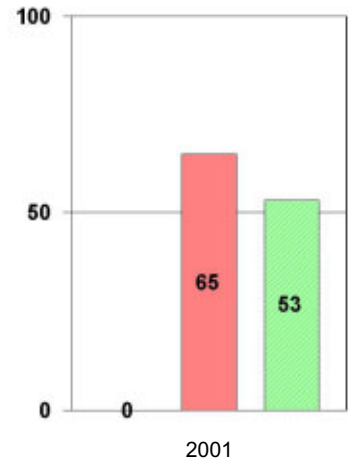
Total Reading



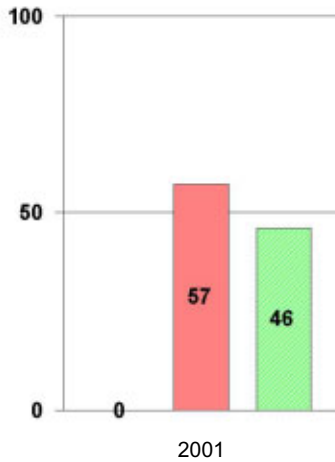
Total Mathematics



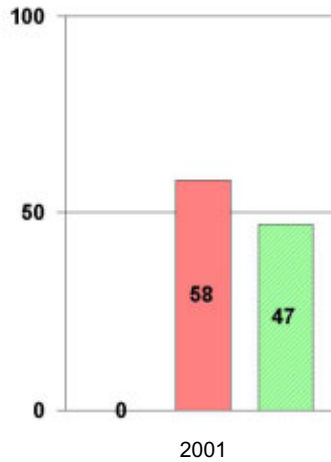
Language



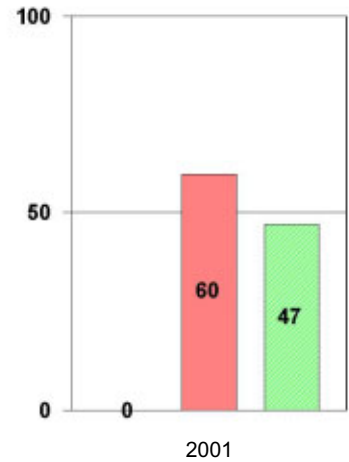
Science



Social Science

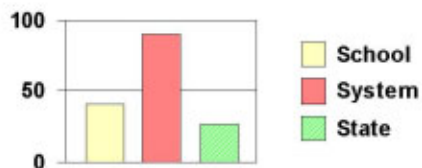


Complete Battery



No eight-grade students are enrolled in McClarin Alternative School

Legend



2000-2001 Georgia Public Education Report Card

Fulton County

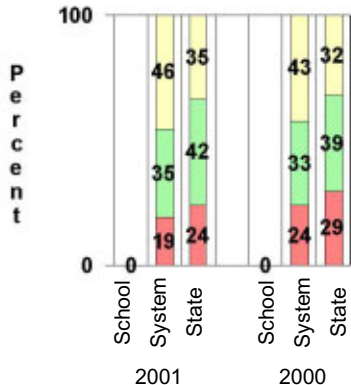
McClarin Alternative School

CRITERION-REFERENCED ASSESSMENTS

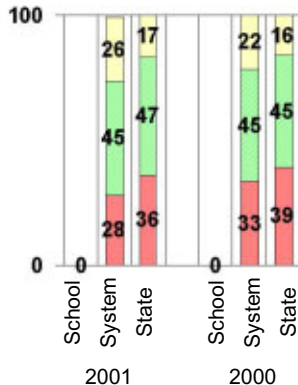
Criterion-Referenced Competency Tests (CRCTs)

Percentage of Students Scoring in the Indicated Achievement Levels
Each chart reflects data for two years of testing.

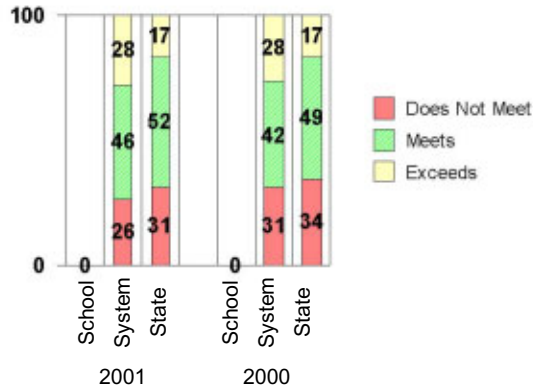
Grade 6 Reading



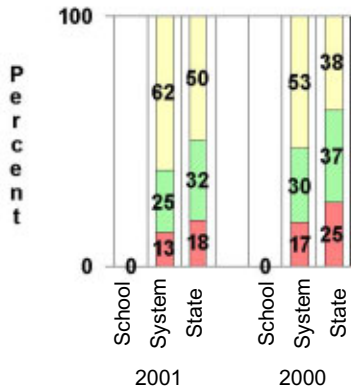
Grade 6 Language Arts



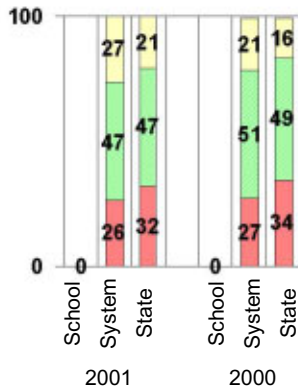
Grade 6 Mathematics



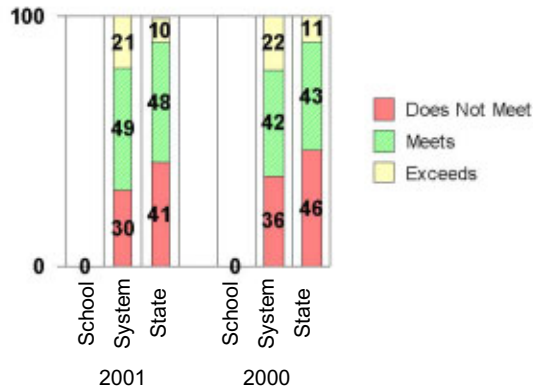
Grade 8 Reading



Grade 8 Language Arts



Grade 8 Mathematics



PERFORMANCE ASSESSMENTS

Grade 8 Writing Assessment

		2000-2001			1999-2000		
Categories of Scaled Scores:		School	System	State	School	System	State
Not on Target	(300-348)	0%	12%	17%	0%	19%	28%
On Target	(349-367)	0%	67%	72%	0%	59%	58%
Exceeds Target	(368-400)	0%	20%	12%	0%	22%	13%
Average Scaled Score: (Range 300-400)		0	360	357	0	359	354

2000-2001 Georgia Public Education Report Card

Fulton County

McClarin Alternative School

PERFORMANCE ASSESSMENTS

Georgia High School Graduation Tests (GHSGT)

Percent of 11th Graders Passing the Georgia High School Graduation Tests on First Administration

	2000-2001			1999-2000			1998-99		
	School	System	State	School	System	State	School	System	State
English Language Arts	0%	95%	94%	0%	96%	94%	74%	94%	94%
Mathematics	0%	94%	91%	0%	92%	90%	46%	87%	86%
Social Studies	0%	90%	80%	0%	90%	83%	38%	83%	78%
Science	0%	79%	68%	0%	78%	71%	18%	73%	70%
All Components Listed Above	0%	77%	65%	0%	77%	68%	15%	71%	66%
Writing	0%	95%	92%	0%	95%	90%	56%	93%	91%

GRADUATE DATA

2001 Graduates by Credentials, Race/Ethnicity, and Gender

	Total	Black	White	Hispanic	Asian	Native American	Multi-Racial	Male	Female
Diplomas with Both College Prep. & Voc. Endorsements	4	3 75.0%	1 25.0%	0 0.0%	0 0.0%	0 0.0%	0 0.0%	3 75.0%	1 25.0%
Diplomas with College Prep. Endorsements	33	29 87.9%	2 6.1%	1 3.0%	0 0.0%	0 0.0%	1 3.0%	21 63.6%	12 36.4%
Diplomas with Vocational Endorsements	42	40 95.2%	2 4.8%	0 0.0%	0 0.0%	0 0.0%	0 0.0%	30 71.4%	12 28.6%
General High School Diplomas	0	0	0	0	0	0	0	0	0
Special Education Diplomas	1	1 100.0%	0 0.0%	0 0.0%	0 0.0%	0 0.0%	0 0.0%	1 100.0%	0 0.0%
Total All Diplomas	80	73 91.3%	5 6.3%	1 1.3%	0 0.0%	0 0.0%	1 1.3%	55 68.8%	25 31.3%
Certificates of Attendance	27	27 100.0%	0 0.0%	0 0.0%	0 0.0%	0 0.0%	0 0.0%	12 44.4%	15 55.6%
Total Graduates	107	100 93.5%	5 4.7%	1 0.9%	0 0.0%	0 0.0%	1 0.9%	67 62.6%	40 37.4%

HOPE Scholarships

	School	System	State
Number of 2001 Graduates	107	3,520	69,215
Number Eligible	0	2,373	38,379
Percent Eligible	0.0%	67.4%	55.4%

High School Completion Rate Percent of 1997 Grade 9 Enrollment in Graduating Class of 2001

	School	System	State
Completion Rate 1997-2001	40%	83.1%	71.1%

2000-2001 Georgia Public Education Report Card

Fulton County

McClarin Alternative School

COLLEGE ADMISSIONS / CREDIT TEST DATA

Scholastic Assessment Test (SAT)							
Based on students' highest verbal and highest math scores					Based on students' last test administration		
	No. Taking Tests	Average Score			Average Score		
		Verbal	Math	Total	Verbal	Math	Total
School	10	415	406	821	382	396	778
College Prep. Endorsement		N/A	N/A	N/A	--	--	--
Other Diplomas		N/A	N/A	N/A	--	--	--
System	3,021	522	533	1055	511	522	1033
College Prep. Endorsement		N/A	N/A	N/A	--	--	--
Other Diplomas		N/A	N/A	N/A	--	--	--
Georgia	43,030	496	495	991	487	486	973
Nation	993,119	--	--	--	502	510	1012

American College Testing (ACT)				
Number Taking Test:	3 *	School	System	State
English		-	19.5	19.2
Mathematics		-	20.7	19.9
Reading		-	20.7	20.2
Science Reasoning		-	20.4	19.9
Composite Score		-	20.5	19.9

Advanced Placement Exams (AP)			
	School	System	State
No. of Students Taking Tests	0	1,906	18,820
No. of Tests Taken	0	3,549	30,294
No. of Test Scores 3 or Higher	0	2,647	15,787
Percent of Test Scores 3 or Higher	N/A	74.6%	52.1%

* - Scores are not reported when fewer than 5 take the ACT.

POST-SECONDARY DATA

Graduates Entering Georgia Public Colleges				Graduates Entering Georgia Public Colleges and Requiring Learning Support (LS)	
		Number	Percent of Graduating Class	Number Requiring LS	Percent of those attending Georgia Public Colleges
2000 Graduates Entering in 2000-2001	School	4	4.7%	2	50.0%
	System	1351	41.6%	169	12.5%
1999 Graduates Entering in 1999-2000	School	0	N/A	0	N/A
	System	1309	42.7%	166	12.7%

Graduates Entering Georgia Public Technical and Adult Schools					
		Entering 2000-2001		Entering 1999-2000	
		Number	Percent	Number	Percent
2000 Graduates	School	0	N/A	--	--
	System	53	1.6%	--	--
1999 Graduates	School	0	N/A	0	N/A
	System	61	2.0%	56	1.8%

2000-2001 Georgia Public Education Report Card

Fulton County

McClarin Alternative School

CERTIFIED PERSONNEL DATA

		Administrators	Support Personnel	PK-12 Teachers
Positions	Number	4.28	4.35	28.00
	Average Contract Days	225.23	204.12	190.36
Personnel	Full-time	4	4	28
	Part-time	4	3	0
Gender	Male	3	3	8
	Female	5	4	20
Certificate Level	4 Yr Bachelor's	1	1	13
	5 Yr Master's	3	4	12
	6 Yr Specialist's	4	2	3
	7 Yr Doctoral	0	0	0
	Other *	0	0	0
Years Experience	<1	0	1	3
	1-10	1	1	10
	11-20	4	2	6
	21-30	3	2	9
	>30	0	1	0
	Average	17.50	16.43	13.36

* Includes One- and Two-Year Vocational Certificates.

ACCREDITATION DATA

Not accredited by Southern Association of Colleges and Schools (SACS) or Georgia Accrediting Commission (GAC)

AWARDS/RECOGNITION DATA

Schools in Georgia may receive recognition in the following programs:

- Charter School
- Pay for Performance Program
- Georgia School of Excellence
- National Blue Ribbon School

McClarin Alternative School did not receive recognition in any of these programs during the 2000-2001 school year.

For more information about these programs, contact your school principal or the school system central office.