

# 2000-2001 Georgia Public Education Report Card

## Fulton County

### Nolan Elementary School - 6600275

Grade Range - PK-5

The Georgia Public Education Report Card is designed to assist systems and schools in educational improvement. This report card contains a variety of data elements. An explanation of the terms is provided as a companion to the report card data. Please refer to the definitions for the most effective use of the reported data.

#### STUDENT DATA

##### Total Enrollment, by Race/Ethnicity and Gender

Total	Black	White	Hispanic	Asian	American Indian	Multi-Racial	Male	Female
K-5: 524	501 95.6%	2 0.4%	5 1.0%	1 0.2%	0 0.0%	15 2.9%	275 52.5%	249 47.5%
PK: 57	54 94.7%	0 0.0%	0 0.0%	0 0.0%	0 0.0%	3 5.3%	34 59.6%	23 40.4%

##### Enrollment in Selected Programs

Program	Program Enrollment	% of Student Population
Gifted (Grades K-12)	13	2.5%
Alternative Programs (Grades K-12)	0	0.0%

##### Enrollment in Compensatory Programs

Program	Program Enrollment	% of Student Population
Special Education (Grades K-12) (PK)	52 1	9.9% N/A
English to Speakers of Other Languages (ESOL) (Grades K-12)	0	0.0%
Early Intervention Program (EIP) (Grades K-3)	61	18.0%
Remedial Education (Grades 4-5, 9-12)	63	33.9%
Title I (Grades K-12)	This School has a Schoolwide Title I Program.	

##### Students Eligible to Receive Free/Reduced-price Lunches

	Number	Percent
School	401	69.0%
System	21,659	31.6%

##### Dropout Rate \*

	Number	Percent
School	N/A	N/A
System	N/A	N/A

\* - Dropouts are not reported for grades PK-5.

##### Retained Students, by Race/Ethnicity and Gender

Total	Black	White	Hispanic	Asian	American Indian	Multi-Racial	Male	Female
24	23 95.8%	1 4.2%	0 0.0%	0 0.0%	0 0.0%	0 0.0%	17 70.8%	7 29.2%

# 2000-2001 Georgia Public Education Report Card

## Fulton County

### Nolan Elementary School

#### NORM-REFERENCED ASSESSMENTS

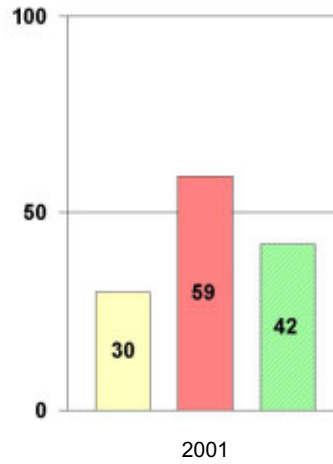
##### Stanford 9 Tests, Grade 3

Each chart reflects data for one year of testing.

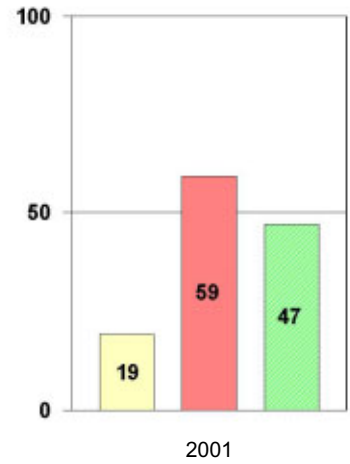
**Total Reading**



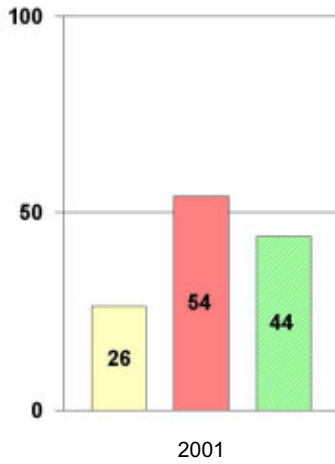
**Total Mathematics**



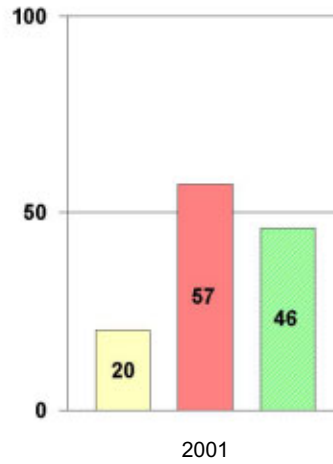
**Language**



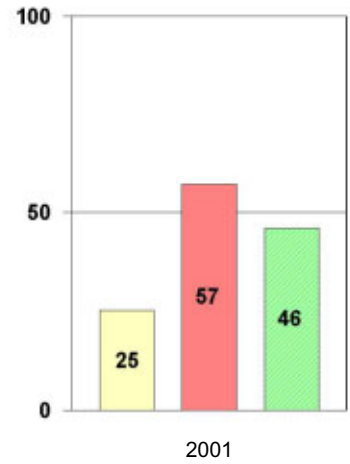
**Science**



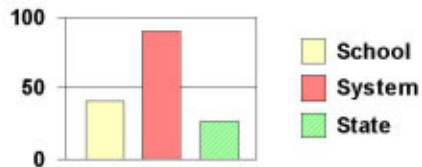
**Social Science**



**Complete Battery**



#### Legend



# 2000-2001 Georgia Public Education Report Card

## Fulton County

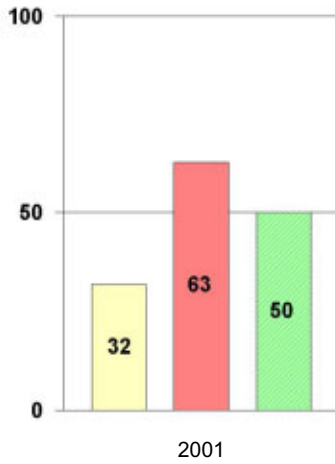
### Nolan Elementary School

#### NORM-REFERENCED ASSESSMENTS

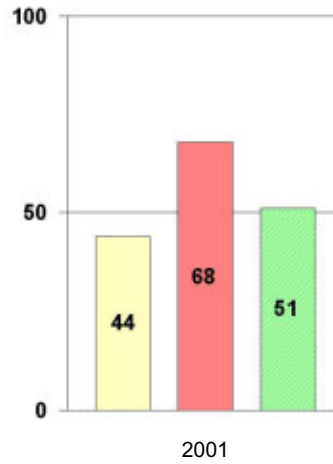
##### Stanford 9 Tests, Grade 5

Each chart reflects data for one year of testing.

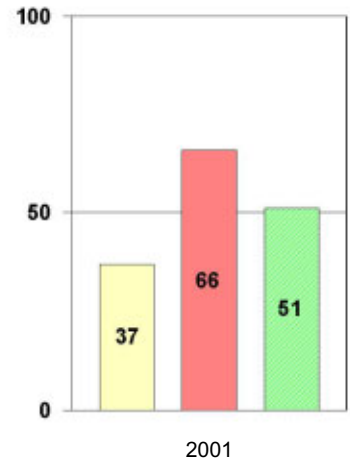
**Total Reading**



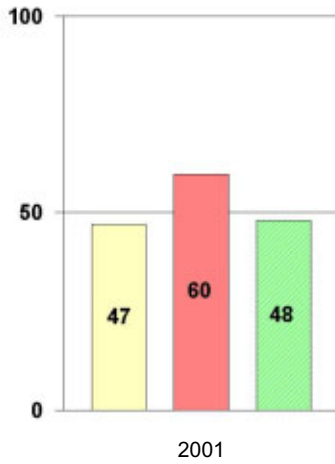
**Total Mathematics**



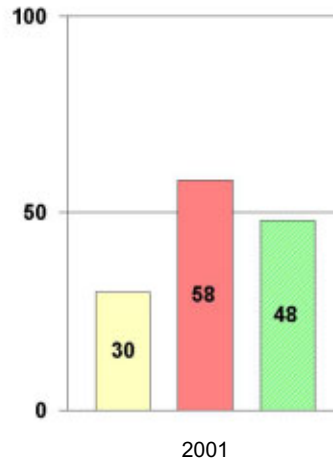
**Language**



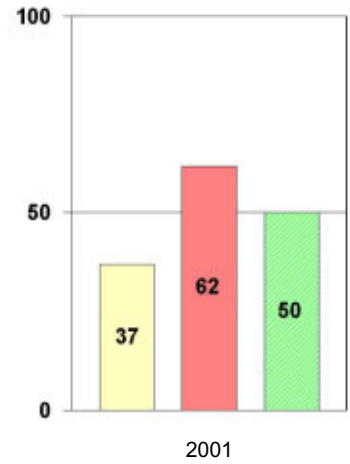
**Science**



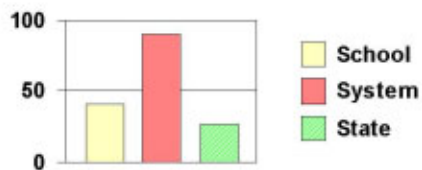
**Social Science**



**Complete Battery**



#### Legend



# 2000-2001 Georgia Public Education Report Card

## Fulton County Nolan Elementary School

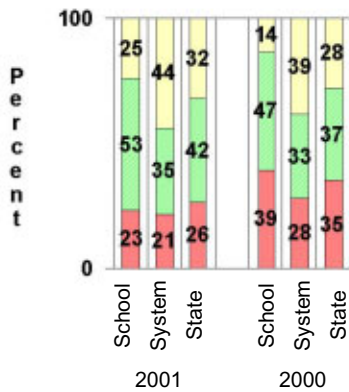
### CRITERION-REFERENCED ASSESSMENTS

#### Criterion-Referenced Competency Tests (CRCTs)

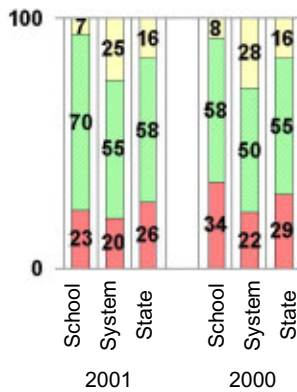
Percentage of Students Scoring in the Indicated Achievement Levels

Each chart reflects data for two years of testing.

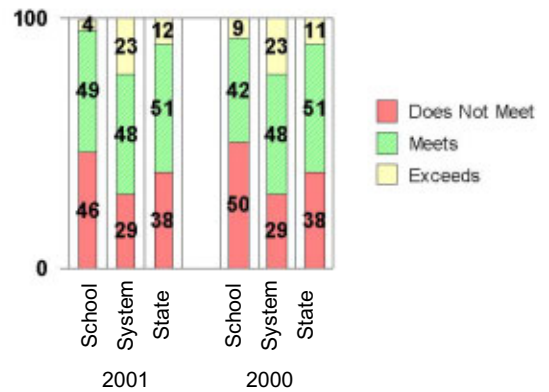
Grade 4 Reading



Grade 4 Language Arts



Grade 4 Mathematics



### PERFORMANCE ASSESSMENTS

#### Grade 5 Writing Assessment

Percent at Developmental Stages:	2000-2001			1999-2000			1998-99		
	School	System	State	School	System	State	School	System	State
<b>Stage 1:</b> The Emerging Writer	1%	1%	1%	1%	1%	1%	0%	0%	1%
<b>Stage 2:</b> The Developing Writer	3%	2%	2%	0%	3%	2%	4%	2%	2%
<b>Stage 3:</b> The Focusing Writer	30%	14%	17%	10%	16%	19%	26%	14%	19%
<b>Stage 4:</b> The Experimenting Writer	45%	34%	42%	45%	38%	41%	44%	35%	41%
<b>Stage 5:</b> The Engaging Writer	18%	32%	29%	38%	29%	27%	22%	31%	27%
<b>Stage 6:</b> The Extending Writer	2%	17%	9%	6%	14%	9%	4%	18%	11%

# 2000-2001 Georgia Public Education Report Card

## Fulton County

### Nolan Elementary School

#### CERTIFIED PERSONNEL DATA

		Administrators	Support Personnel	PK-12 Teachers
Positions	Number	2.39	4.99	38.92
	Average Contract Days	232.09	193.91	190.39
Personnel	Full-time	2	4	38
	Part-time	8	6	5
Gender	Male	0	1	11
	Female	10	9	32
Certificate Level	4 Yr Bachelor's	5	3	30
	5 Yr Master's	5	6	13
	6 Yr Specialist's	0	0	0
	7 Yr Doctoral	0	1	0
	Other *	0	0	0
Years Experience	<1	0	0	8
	1-10	8	5	23
	11-20	1	3	6
	21-30	1	2	5
	>30	0	0	1
	Average	8.40	12.30	8.53

\* Includes One- and Two-Year Vocational Certificates.

#### ACCREDITATION DATA

Accredited by Southern Association of Colleges and Schools (SACS):  
Elementary/Middle Commission

#### AWARDS/RECOGNITION DATA

Schools in Georgia may receive recognition in the following programs:

- Charter School
- Pay for Performance Program
- Georgia School of Excellence
- National Blue Ribbon School

Nolan Elementary School did not receive recognition in any of these programs during the 2000-2001 school year.

For more information about these programs, contact your school principal or the school system central office.