

2000-2001 Georgia Public Education Report Card

Fulton County

Independence Alternative School - 6600386

Grade Range - 7-12

The Georgia Public Education Report Card is designed to assist systems and schools in educational improvement. This report card contains a variety of data elements. An explanation of the terms is provided as a companion to the report card data. Please refer to the definitions for the most effective use of the reported data.

STUDENT DATA

Total Enrollment, by Race/Ethnicity and Gender

Total		Black	White	Hispanic	Asian	American Indian	Multi-Racial	Male	Female
7-12:	432	81	285	30	22	0	14	245	187
		18.8%	66.0%	6.9%	5.1%	0.0%	3.2%	56.7%	43.3%

Enrollment in Selected Programs

Program	Program Enrollment	% of Student Population
Gifted (Grades K-12)	0	0.0%
Vocational Labs (Grades 9-12)	97	22.7%
Alternative Programs (Grades K-12)	22	5.1%

Enrollment in Compensatory Programs

Program	Program Enrollment	% of Student Population
Special Education (Grades K-12) (PK)	33 0	7.6% N/A
English to Speakers of Other Languages (ESOL) (Grades K-12)	0	0.0%
Remedial Education (Grades 4-5, 9-12)	21	4.9%
Title I (Grades K-12) This School has no Title I Program.		

Students Eligible to Receive Free/Reduced-price Lunches

	Number	Percent
School	0	0.0%
System	21,659	31.6%

Dropout Rate for Grades 7-12

	Number	Percent
School	236	27.5%
System	951	2.8%

Retained Students, by Race/Ethnicity and Gender

Total	Black	White	Hispanic	Asian	American Indian	Multi-Racial	Male	Female
250	47	162	18	15	0	8	148	102
	18.8%	64.8%	7.2%	6.0%	0.0%	3.2%	59.2%	40.8%

2000-2001 Georgia Public Education Report Card

Fulton County

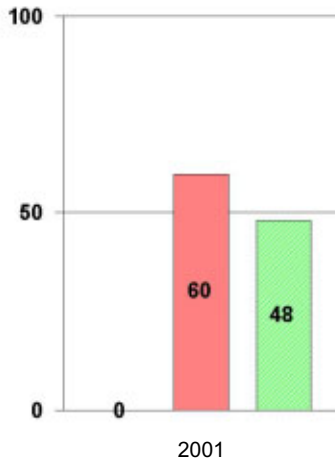
Independence Alternative School

NORM-REFERENCED ASSESSMENTS

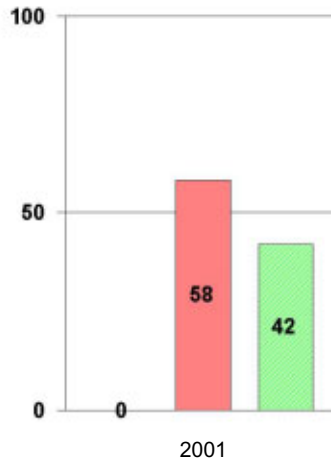
Stanford 9 Tests, Grade 8

Each chart reflects data for one year of testing.

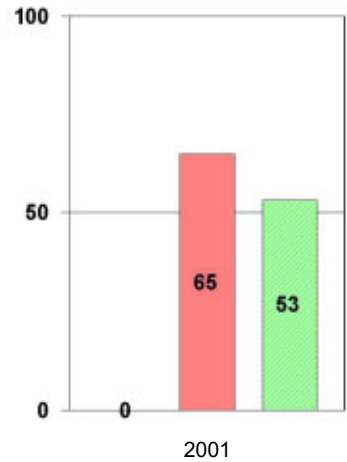
Total Reading



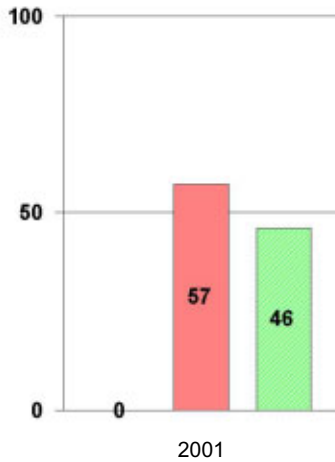
Total Mathematics



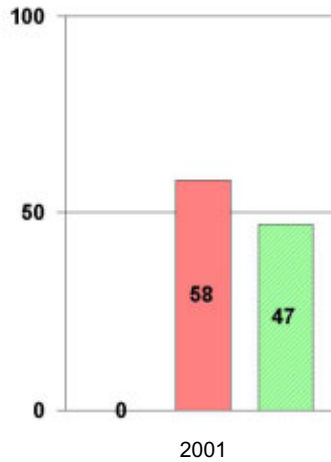
Language



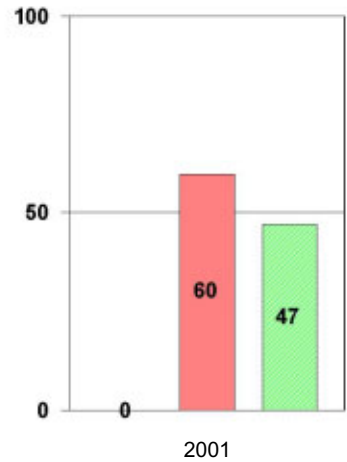
Science



Social Science

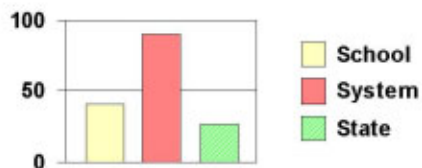


Complete Battery



No eight-grade students are enrolled in Independence Alternative School

Legend



2000-2001 Georgia Public Education Report Card

Fulton County

Independence Alternative School

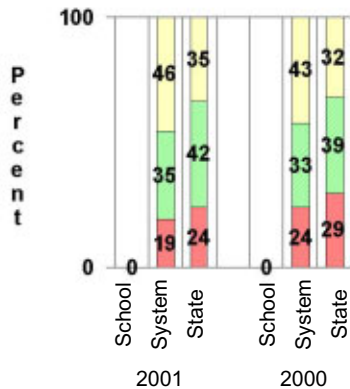
CRITERION-REFERENCED ASSESSMENTS

Criterion-Referenced Competency Tests (CRCTs)

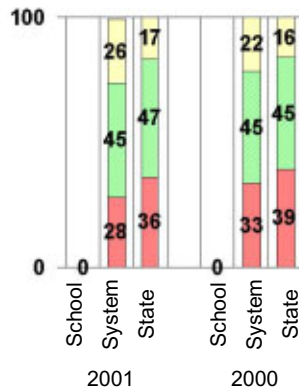
Percentage of Students Scoring in the Indicated Achievement Levels

Each chart reflects data for two years of testing.

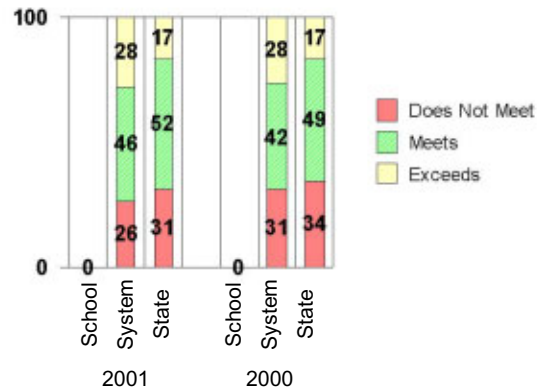
Grade 6 Reading



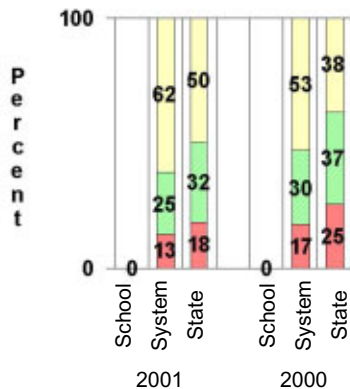
Grade 6 Language Arts



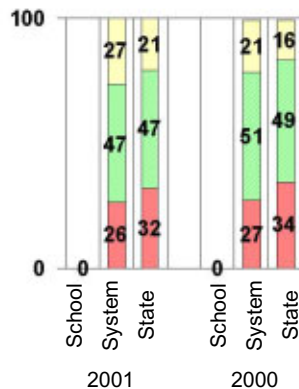
Grade 6 Mathematics



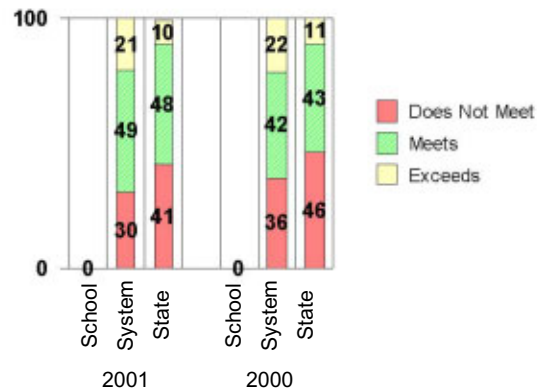
Grade 8 Reading



Grade 8 Language Arts



Grade 8 Mathematics



No sixth-grade students are enrolled in Independence Alternative School

PERFORMANCE ASSESSMENTS

Grade 8 Writing Assessment

		2000-2001			1999-2000		
		School	System	State	School	System	State
Categories of Scaled Scores:							
Not on Target	(300-348)	0%	12%	17%	0%	19%	28%
On Target	(349-367)	0%	67%	72%	0%	59%	58%
Exceeds Target	(368-400)	0%	20%	12%	0%	22%	13%
Average Scaled Score: (Range 300-400)		0	360	357	0	359	354

2000-2001 Georgia Public Education Report Card

Fulton County

Independence Alternative School

PERFORMANCE ASSESSMENTS

Georgia High School Graduation Tests (GHSGT)

Percent of 11th Graders Passing the Georgia High School Graduation Tests on First Administration

	2000-2001			1999-2000			1998-99		
	School	System	State	School	System	State	School	System	State
English Language Arts	0%	95%	94%	0%	96%	94%	93%	94%	94%
Mathematics	0%	94%	91%	0%	92%	90%	93%	87%	86%
Social Studies	0%	90%	80%	0%	90%	83%	76%	83%	78%
Science	0%	79%	68%	0%	78%	71%	74%	73%	70%
All Components Listed Above	0%	77%	65%	0%	77%	68%	68%	71%	66%
Writing	0%	95%	92%	100%	95%	90%	94%	93%	91%

GRADUATE DATA

2001 Graduates by Credentials, Race/Ethnicity, and Gender

	Total	Black	White	Hispanic	Asian	Native American	Multi-Racial	Male	Female
Diplomas with Both College Prep. & Voc. Endorsements	6	0 0.0%	5 83.3%	1 16.7%	0 0.0%	0 0.0%	0 0.0%	2 33.3%	4 66.7%
Diplomas with College Prep. Endorsements	107	17 15.9%	78 72.9%	4 3.7%	6 5.6%	0 0.0%	2 1.9%	55 51.4%	52 48.6%
Diplomas with Vocational Endorsements	30	7 23.3%	21 70.0%	2 6.7%	0 0.0%	0 0.0%	0 0.0%	20 66.7%	10 33.3%
General High School Diplomas	3	1 33.3%	0 0.0%	2 66.7%	0 0.0%	0 0.0%	0 0.0%	1 33.3%	2 66.7%
Special Education Diplomas	1	0 0.0%	1 100.0%	0 0.0%	0 0.0%	0 0.0%	0 0.0%	0 0.0%	1 100.0%
Total All Diplomas	147	25 17.0%	105 71.4%	9 6.1%	6 4.1%	0 0.0%	2 1.4%	78 53.1%	69 46.9%
Certificates of Attendance	7	1 14.3%	2 28.6%	2 28.6%	2 28.6%	0 0.0%	0 0.0%	4 57.1%	3 42.9%
Total Graduates	154	26 16.9%	107 69.5%	11 7.1%	8 5.2%	0 0.0%	2 1.3%	82 53.2%	72 46.8%

HOPE Scholarships

	School	System	State
Number of 2001 Graduates	154	3,520	69,215
Number Eligible	33	2,373	38,379
Percent Eligible	21.4%	67.4%	55.4%

High School Completion Rate Percent of 1997 Grade 9 Enrollment in Graduating Class of 2001

	School	System	State
Completion Rate 1997-2001	45%	83.1%	71.1%

2000-2001 Georgia Public Education Report Card

Fulton County

Independence Alternative School

COLLEGE ADMISSIONS / CREDIT TEST DATA

Scholastic Assessment Test (SAT)							
Based on students' highest verbal and highest math scores					Based on students' last test administration		
	No. Taking Tests	Average Score			Average Score		
		Verbal	Math	Total	Verbal	Math	Total
School	51	495	469	964	491	467	958
College Prep. Endorsement		N/A	N/A	N/A	--	--	--
Other Diplomas		N/A	N/A	N/A	--	--	--
System	3,021	522	533	1055	511	522	1033
College Prep. Endorsement		N/A	N/A	N/A	--	--	--
Other Diplomas		N/A	N/A	N/A	--	--	--
Georgia	43,030	496	495	991	487	486	973
Nation	993,119	--	--	--	502	510	1012

American College Testing (ACT)				
Number Taking Test:	5	School	System	State
English		18.6	19.5	19.2
Mathematics		18.4	20.7	19.9
Reading		23.4	20.7	20.2
Science Reasoning		20.6	20.4	19.9
Composite Score		20.2	20.5	19.9

Advanced Placement Exams (AP)			
	School	System	State
No. of Students Taking Tests	0	1,906	18,820
No. of Tests Taken	0	3,549	30,294
No. of Test Scores 3 or Higher	0	2,647	15,787
Percent of Test Scores 3 or Higher	N/A	74.6%	52.1%

POST-SECONDARY DATA

Graduates Entering Georgia Public Colleges				Graduates Entering Georgia Public Colleges and Requiring Learning Support (LS)	
		Number	Percent of Graduating Class	Number Requiring LS	Percent of those attending Georgia Public Colleges
2000 Graduates Entering in 2000-2001	School	53	32.9%	6	11.3%
	System	1351	41.6%	169	12.5%
1999 Graduates Entering in 1999-2000	School	31	21.1%	2	6.5%
	System	1309	42.7%	166	12.7%

Graduates Entering Georgia Public Technical and Adult Schools					
		Entering 2000-2001		Entering 1999-2000	
		Number	Percent	Number	Percent
2000 Graduates	School	5	3.1%	--	--
	System	53	1.6%	--	--
1999 Graduates	School	2	1.4%	1	0.7%
	System	61	2.0%	56	1.8%

2000-2001 Georgia Public Education Report Card

Fulton County

Independence Alternative School

CERTIFIED PERSONNEL DATA

		Administrators	Support Personnel	PK-12 Teachers
Positions	Number	2.34	5.37	27.00
	Average Contract Days	232.70	201.88	190.37
Personnel	Full-time	2	5	27
	Part-time	6	3	0
Gender	Male	5	0	6
	Female	3	8	21
Certificate Level	4 Yr Bachelor's	2	0	4
	5 Yr Master's	2	5	20
	6 Yr Specialist's	1	3	2
	7 Yr Doctoral	3	0	1
	Other *	0	0	0
Years Experience	<1	0	0	0
	1-10	4	3	11
	11-20	2	2	9
	21-30	1	2	6
	>30	1	1	1
	Average	15.75	15.63	15.04

* Includes One- and Two-Year Vocational Certificates.

ACCREDITATION DATA

Not accredited by Southern Association of Colleges and Schools (SACS) or Georgia Accrediting Commission (GAC)

AWARDS/RECOGNITION DATA

Schools in Georgia may receive recognition in the following programs:

- Charter School
- Pay for Performance Program
- Georgia School of Excellence
- National Blue Ribbon School

Independence Alternative School did not receive recognition in any of these programs during the 2000-2001 school year.

For more information about these programs, contact your school principal or the school system central office.