

2000-2001 Georgia Public Education Report Card

Fulton County

Holcomb Bridge Middle School - 6600284

Grade Range - 6-8

The Georgia Public Education Report Card is designed to assist systems and schools in educational improvement. This report card contains a variety of data elements. An explanation of the terms is provided as a companion to the report card data. Please refer to the definitions for the most effective use of the reported data.

STUDENT DATA

Total Enrollment, by Race/Ethnicity and Gender

Total	Black	White	Hispanic	Asian	American Indian	Multi-Racial	Male	Female
6-8: 888	209 23.5%	484 54.5%	113 12.7%	55 6.2%	1 0.1%	26 2.9%	448 50.5%	440 49.5%

Enrollment in Selected Programs

Program	Program Enrollment	% of Student Population
Gifted (Grades K-12)	209	23.5%
Vocational Labs (Grades 9-12)	0	0.0%
Alternative Programs (Grades K-12)	0	0.0%

Enrollment in Compensatory Programs

Program	Program Enrollment	% of Student Population
Special Education (Grades K-12) (PK)	86 0	9.7% N/A
English to Speakers of Other Languages (ESOL) (Grades K-12)	87	9.8%
Title I (Grades K-12)	This School has no Title I Program.	

Students Eligible to Receive Free/Reduced-price Lunches

	Number	Percent
School	207	23.3%
System	21,659	31.6%

Dropout Rate for Grades 6-8

	Number	Percent
School	0	0.0%
System	44	0.2%

Retained Students, by Race/Ethnicity and Gender

Total	Black	White	Hispanic	Asian	American Indian	Multi-Racial	Male	Female
13	5 38.5%	4 30.8%	3 23.1%	0 0.0%	0 0.0%	1 7.7%	7 53.8%	6 46.2%

2000-2001 Georgia Public Education Report Card

Fulton County

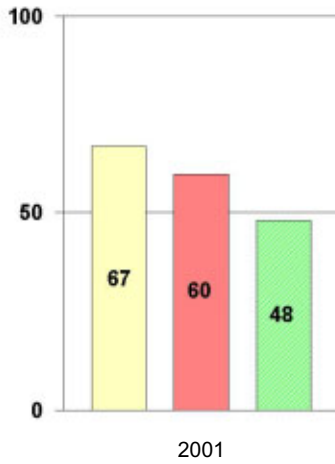
Holcomb Bridge Middle School

NORM-REFERENCED ASSESSMENTS

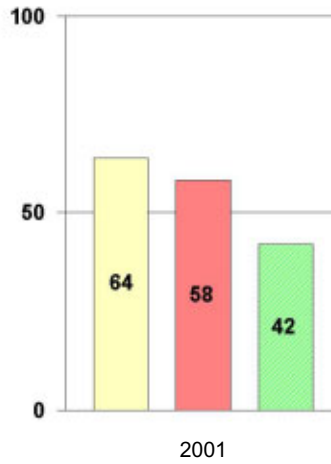
Stanford 9 Tests, Grade 8

Each chart reflects data for one year of testing.

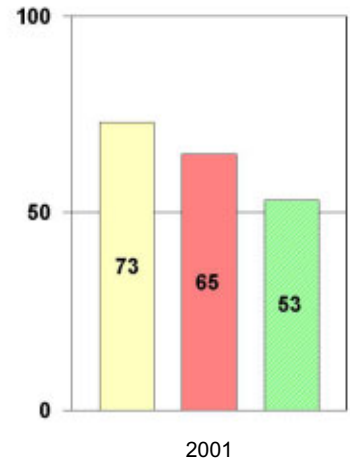
Total Reading



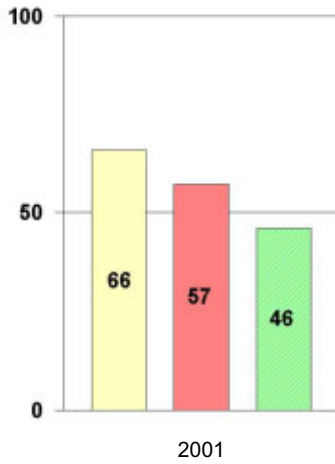
Total Mathematics



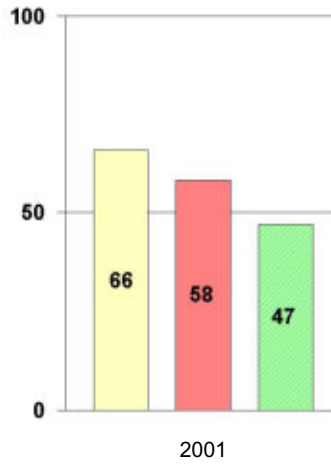
Language



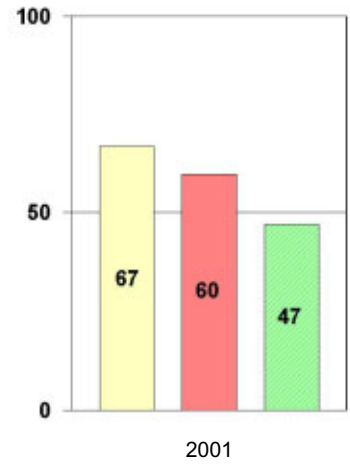
Science



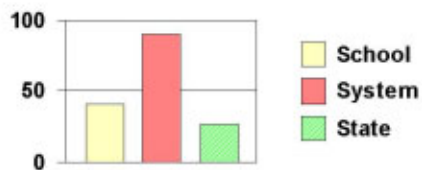
Social Science



Complete Battery



Legend



2000-2001 Georgia Public Education Report Card

Fulton County

Holcomb Bridge Middle School

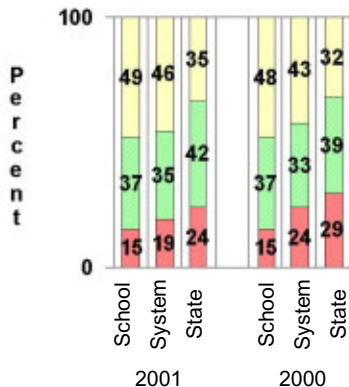
CRITERION-REFERENCED ASSESSMENTS

Criterion-Referenced Competency Tests (CRCTs)

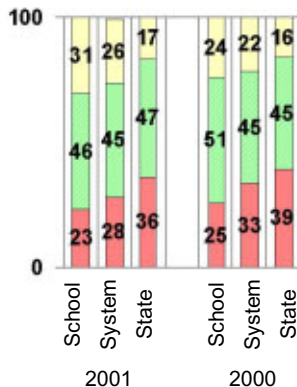
Percentage of Students Scoring in the Indicated Achievement Levels

Each chart reflects data for two years of testing.

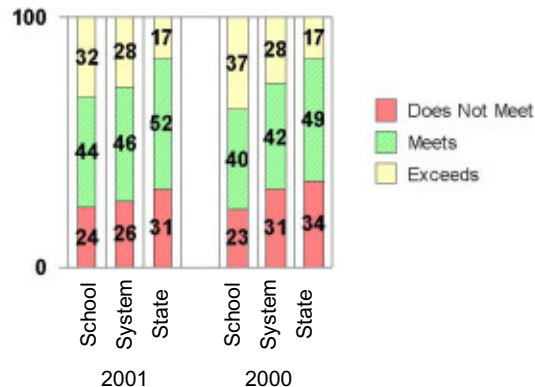
Grade 6 Reading



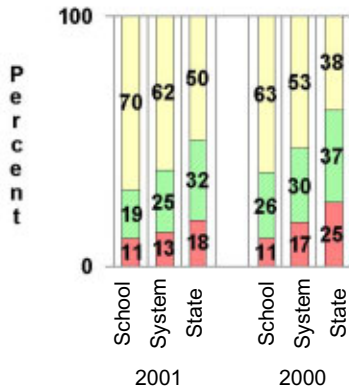
Grade 6 Language Arts



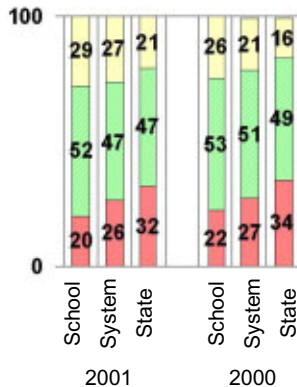
Grade 6 Mathematics



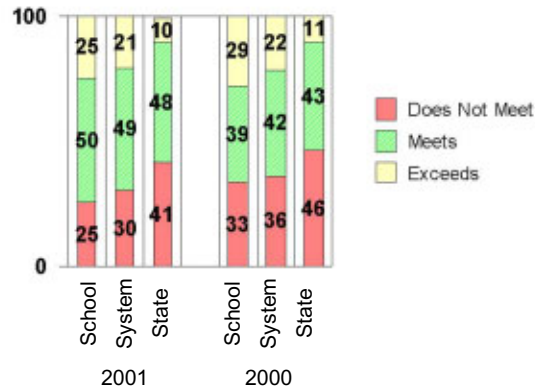
Grade 8 Reading



Grade 8 Language Arts



Grade 8 Mathematics



PERFORMANCE ASSESSMENTS

Grade 8 Writing Assessment

		2000-2001			1999-2000		
Categories of Scaled Scores:		School	System	State	School	System	State
Not on Target	(300-348)	9%	12%	17%	12%	19%	28%
On Target	(349-367)	63%	67%	72%	59%	59%	58%
Exceeds Target	(368-400)	28%	20%	12%	29%	22%	13%
Average Scaled Score: (Range 300-400)		362	360	357	361	359	354

2000-2001 Georgia Public Education Report Card

Fulton County

Holcomb Bridge Middle School

CERTIFIED PERSONNEL DATA

		Administrators	Support Personnel	PK-12 Teachers
Positions	Number	4.70	7.46	64.74
	Average Contract Days	232.55	195.83	190.00
Personnel	Full-time	4	5	64
	Part-time	14	17	2
Gender	Male	5	6	16
	Female	13	16	50
Certificate Level	4 Yr Bachelor's	5	10	34
	5 Yr Master's	9	10	31
	6 Yr Specialist's	4	2	1
	7 Yr Doctoral	0	0	0
	Other *	0	0	0
Years Experience	<1	1	4	8
	1-10	6	11	28
	11-20	5	4	11
	21-30	6	2	17
	>30	0	1	2
	Average	14.83	8.73	12.06

* Includes One- and Two-Year Vocational Certificates.

ACCREDITATION DATA

Accredited by Southern Association of Colleges and Schools (SACS):
Elementary/Middle Commission

AWARDS/RECOGNITION DATA

Schools in Georgia may receive recognition in the following programs:

- Charter School
- Pay for Performance Program
- Georgia School of Excellence
- National Blue Ribbon School

Holcomb Bridge Middle School did not receive recognition in any of these programs during the 2000-2001 school year.

For more information about these programs, contact your school principal or the school system central office.