

2000-2001 Georgia Public Education Report Card

Fulton County

High Point Elementary School - 6604056

Grade Range - PK-5

The Georgia Public Education Report Card is designed to assist systems and schools in educational improvement. This report card contains a variety of data elements. An explanation of the terms is provided as a companion to the report card data. Please refer to the definitions for the most effective use of the reported data.

STUDENT DATA

Total Enrollment, by Race/Ethnicity and Gender

Total	Black	White	Hispanic	Asian	American Indian	Multi-Racial	Male	Female
K-5: 525	104 19.8%	134 25.5%	259 49.3%	7 1.3%	0 0.0%	21 4.0%	256 48.8%	269 51.2%
PK: 58	9 15.5%	7 12.1%	40 69.0%	1 1.7%	0 0.0%	1 1.7%	29 50.0%	29 50.0%

Enrollment in Selected Programs

Program	Program Enrollment	% of Student Population
Gifted (Grades K-12)	23	4.4%
Alternative Programs (Grades K-12)	0	0.0%

Enrollment in Compensatory Programs

Program	Program Enrollment	% of Student Population
Special Education (Grades K-12) (PK)	60 0	11.4% N/A
English to Speakers of Other Languages (ESOL) (Grades K-12)	169	32.2%
Early Intervention Program (EIP) (Grades K-3)	96	26.6%
Remedial Education (Grades 4-5, 9-12)	54	32.9%
Title I (Grades K-12)	This School has a Targeted-Assistance Title I Program.	

Students Eligible to Receive Free/Reduced-price Lunches

	Number	Percent
School	373	64.0%
System	21,659	31.6%

Dropout Rate *

	Number	Percent
School	N/A	N/A
System	N/A	N/A

* - Dropouts are not reported for grades PK-5.

Retained Students, by Race/Ethnicity and Gender

Total	Black	White	Hispanic	Asian	American Indian	Multi-Racial	Male	Female
21	1 4.8%	0 0.0%	20 95.2%	0 0.0%	0 0.0%	0 0.0%	13 61.9%	8 38.1%

2000-2001 Georgia Public Education Report Card

Fulton County

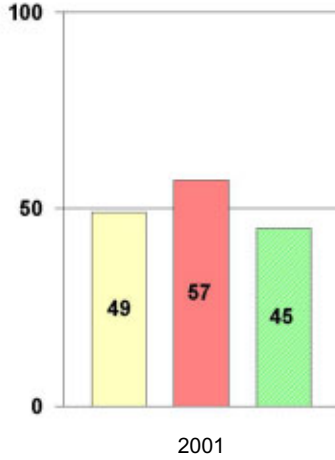
High Point Elementary School

NORM-REFERENCED ASSESSMENTS

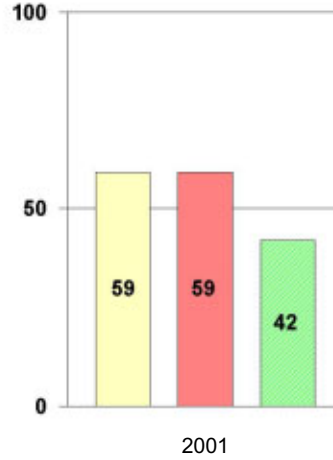
Stanford 9 Tests, Grade 3

Each chart reflects data for one year of testing.

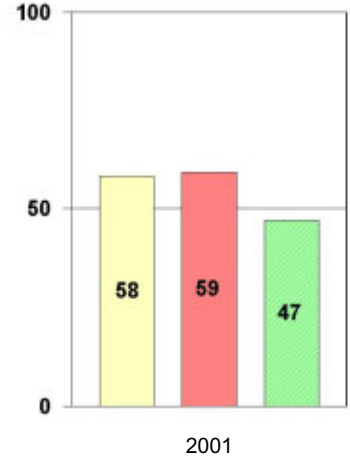
Total Reading



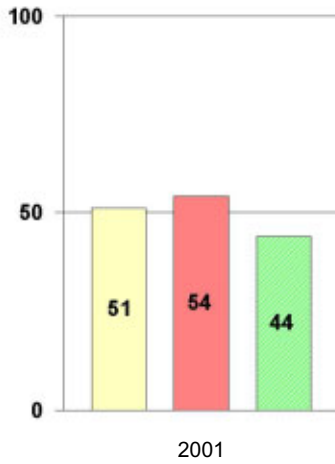
Total Mathematics



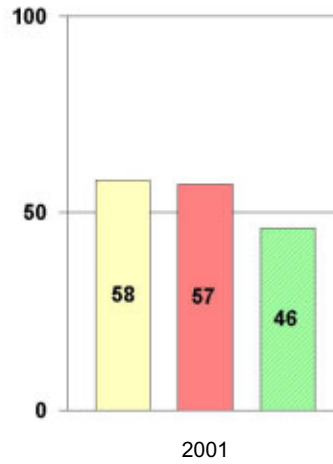
Language



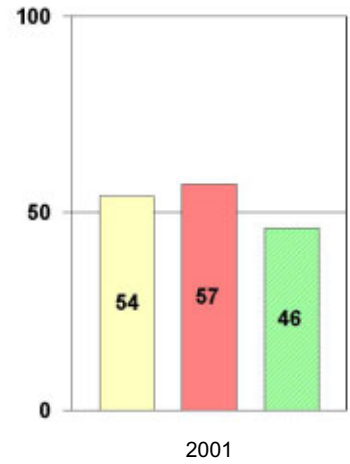
Science



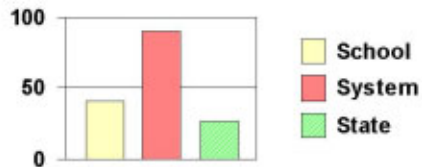
Social Science



Complete Battery



Legend



2000-2001 Georgia Public Education Report Card

Fulton County

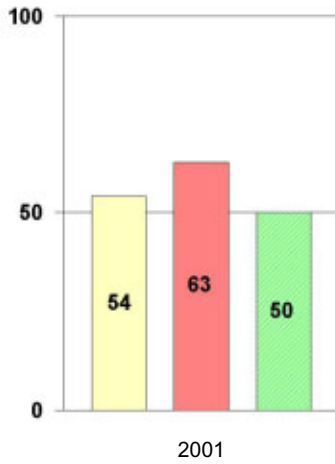
High Point Elementary School

NORM-REFERENCED ASSESSMENTS

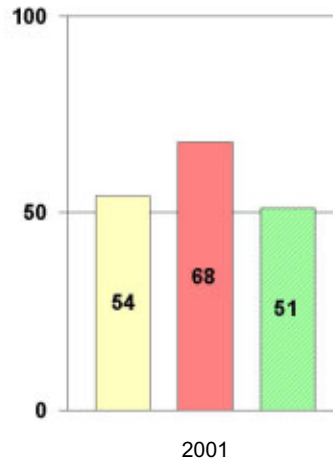
Stanford 9 Tests, Grade 5

Each chart reflects data for one year of testing.

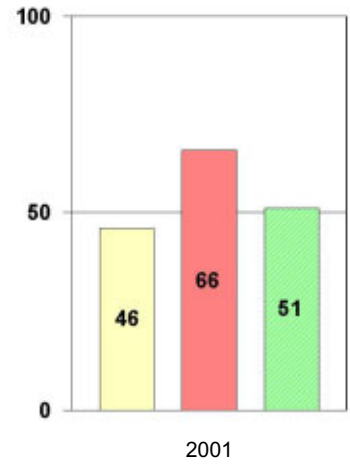
Total Reading



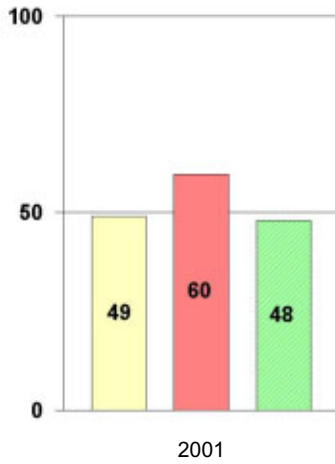
Total Mathematics



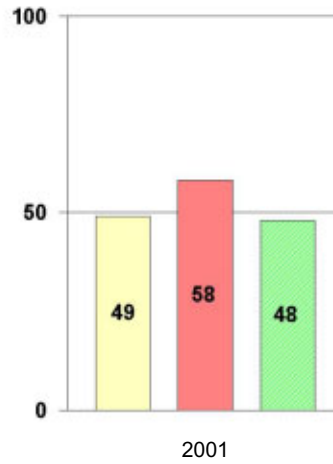
Language



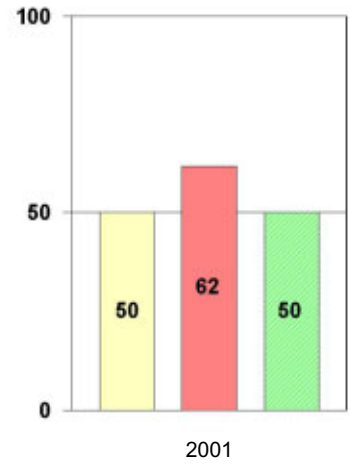
Science



Social Science



Complete Battery



Legend



2000-2001 Georgia Public Education Report Card

Fulton County High Point Elementary School

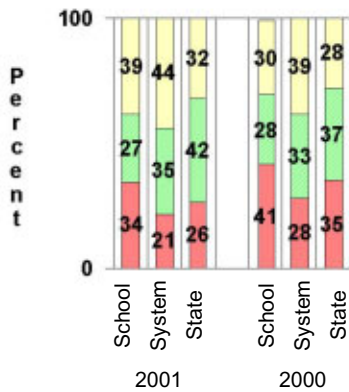
CRITERION-REFERENCED ASSESSMENTS

Criterion-Referenced Competency Tests (CRCTs)

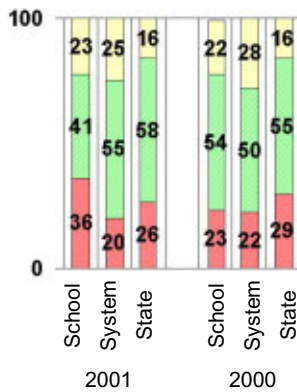
Percentage of Students Scoring in the Indicated Achievement Levels

Each chart reflects data for two years of testing.

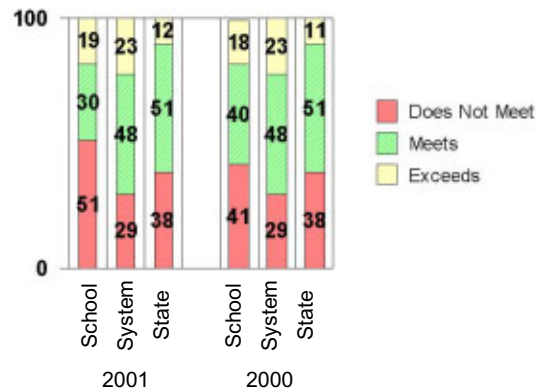
Grade 4 Reading



Grade 4 Language Arts



Grade 4 Mathematics



PERFORMANCE ASSESSMENTS

Grade 5 Writing Assessment

Percent at Developmental Stages:	2000-2001			1999-2000			1998-99		
	School	System	State	School	System	State	School	System	State
Stage 1: The Emerging Writer	0%	1%	1%	3%	1%	1%	1%	0%	1%
Stage 2: The Developing Writer	2%	2%	2%	14%	3%	2%	3%	2%	2%
Stage 3: The Focusing Writer	13%	14%	17%	36%	16%	19%	24%	14%	19%
Stage 4: The Experimenting Writer	33%	34%	42%	29%	38%	41%	36%	35%	41%
Stage 5: The Engaging Writer	35%	32%	29%	12%	29%	27%	24%	31%	27%
Stage 6: The Extending Writer	17%	17%	9%	7%	14%	9%	11%	18%	11%

2000-2001 Georgia Public Education Report Card

Fulton County

High Point Elementary School

CERTIFIED PERSONNEL DATA

		Administrators	Support Personnel	PK-12 Teachers
Positions	Number	2.31	4.18	45.92
	Average Contract Days	233.36	195.02	190.33
Personnel	Full-time	2	2	44
	Part-time	9	9	5
Gender	Male	0	0	4
	Female	11	11	45
Certificate Level	4 Yr Bachelor's	4	1	27
	5 Yr Master's	4	8	20
	6 Yr Specialist's	3	2	2
	7 Yr Doctoral	0	0	0
	Other *	0	0	0
Years Experience	<1	0	0	1
	1-10	1	3	22
	11-20	2	6	9
	21-30	7	2	15
	>30	1	0	2
	Average	22.64	14.73	14.33

* Includes One- and Two-Year Vocational Certificates.

ACCREDITATION DATA

Accredited by Southern Association of Colleges and Schools (SACS):
Elementary/Middle Commission

AWARDS/RECOGNITION DATA

Schools in Georgia may receive recognition in the following programs:

- Charter School
- Pay for Performance Program
- Georgia School of Excellence
- National Blue Ribbon School

High Point Elementary School did not receive recognition in any of these programs during the 2000-2001 school year.

For more information about these programs, contact your school principal or the school system central office.