

# 2000-2001 Georgia Public Education Report Card

## Fulton County

### Heritage Elementary School - 6600301

Grade Range - PK-5

The Georgia Public Education Report Card is designed to assist systems and schools in educational improvement. This report card contains a variety of data elements. An explanation of the terms is provided as a companion to the report card data. Please refer to the definitions for the most effective use of the reported data.

#### STUDENT DATA

##### Total Enrollment, by Race/Ethnicity and Gender

Total		Black	White	Hispanic	Asian	American Indian	Multi-Racial	Male	Female
K-5:	717	695 96.9%	3 0.4%	7 1.0%	3 0.4%	1 0.1%	8 1.1%	369 51.5%	348 48.5%
PK:	34	34 100.0%	0 0.0%	0 0.0%	0 0.0%	0 0.0%	0 0.0%	15 44.1%	19 55.9%

##### Enrollment in Selected Programs

Program	Program Enrollment	% of Student Population
Gifted (Grades K-12)	18	2.5%
Alternative Programs (Grades K-12)	0	0.0%

##### Enrollment in Compensatory Programs

Program	Program Enrollment	% of Student Population
Special Education (Grades K-12) (PK)	50 1	7.0% N/A
English to Speakers of Other Languages (ESOL) (Grades K-12)	0	0.0%
Early Intervention Program (EIP) (Grades K-3)	37	7.7%
Remedial Education (Grades 4-5, 9-12)	69	29.0%
Title I (Grades K-12)	This School has a Targeted-Assistance Title I Program.	

##### Students Eligible to Receive Free/Reduced-price Lunches

	Number	Percent
School	711	94.7%
System	21,659	31.6%

##### Dropout Rate \*

	Number	Percent
School	N/A	N/A
System	N/A	N/A

\* - Dropouts are not reported for grades PK-5.

##### Retained Students, by Race/Ethnicity and Gender

Total	Black	White	Hispanic	Asian	American Indian	Multi-Racial	Male	Female
44	44 100.0%	0 0.0%	0 0.0%	0 0.0%	0 0.0%	0 0.0%	24 54.5%	20 45.5%

# 2000-2001 Georgia Public Education Report Card

## Fulton County

### Heritage Elementary School

#### NORM-REFERENCED ASSESSMENTS

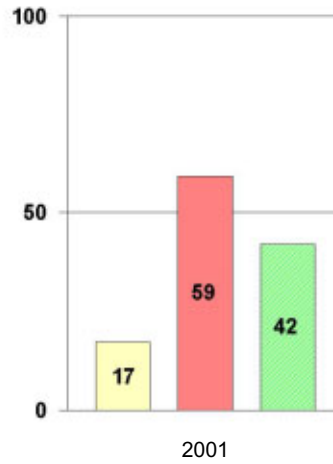
##### Stanford 9 Tests, Grade 3

Each chart reflects data for one year of testing.

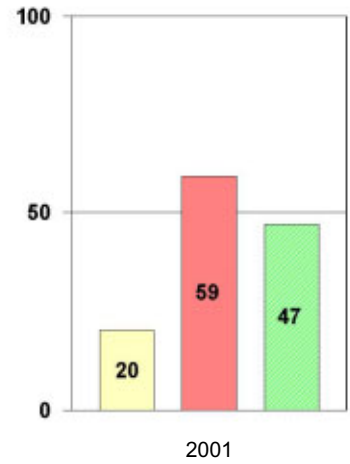
###### Total Reading



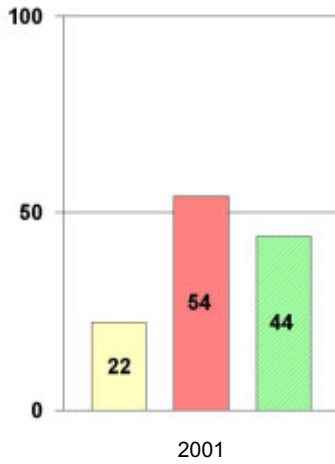
###### Total Mathematics



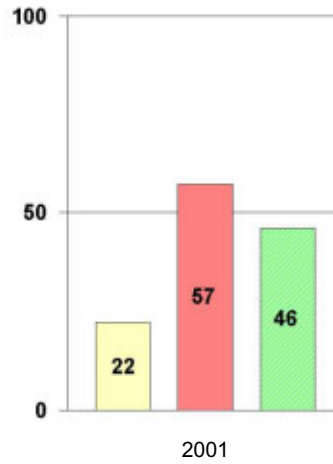
###### Language



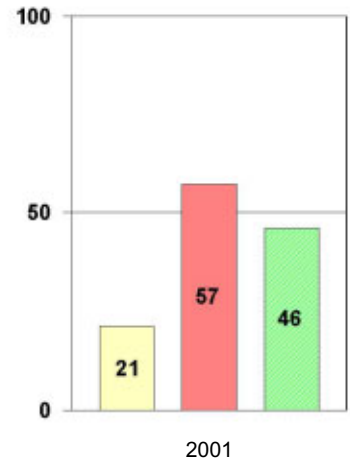
###### Science



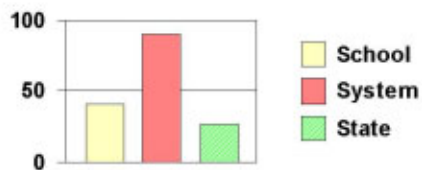
###### Social Science



###### Complete Battery



#### Legend



# 2000-2001 Georgia Public Education Report Card

## Fulton County

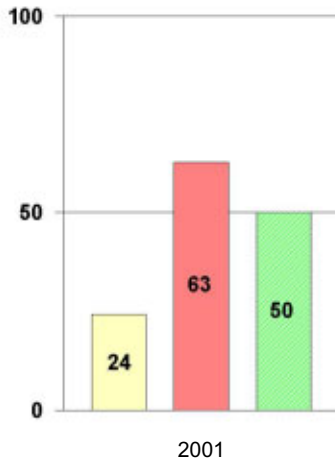
### Heritage Elementary School

#### NORM-REFERENCED ASSESSMENTS

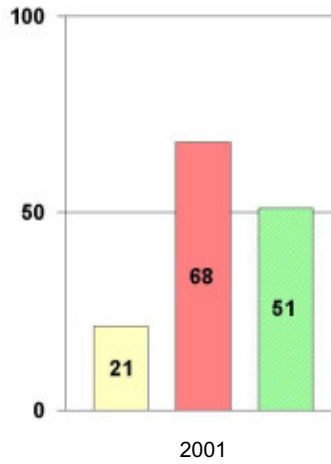
##### Stanford 9 Tests, Grade 5

Each chart reflects data for one year of testing.

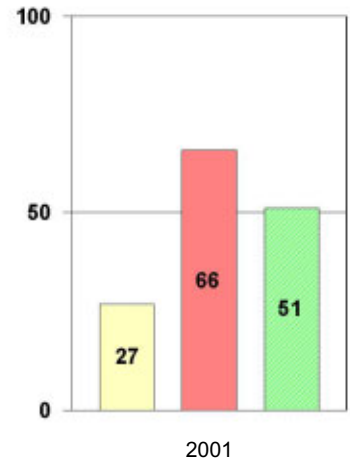
**Total Reading**



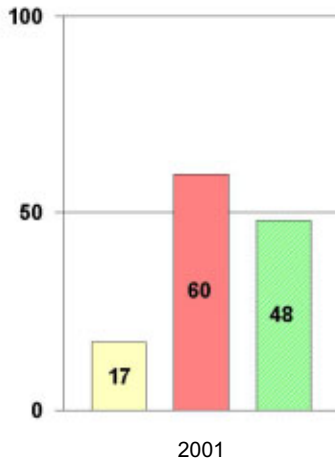
**Total Mathematics**



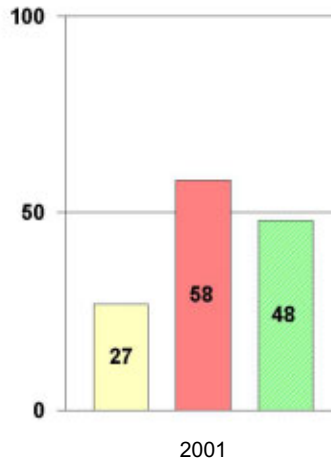
**Language**



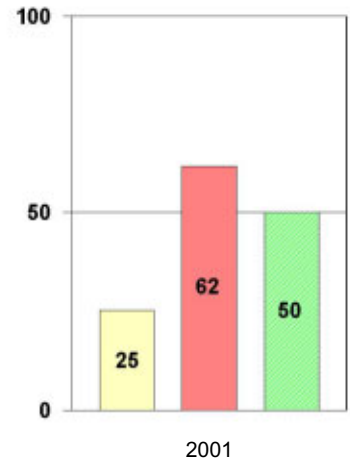
**Science**



**Social Science**



**Complete Battery**



#### Legend



# 2000-2001 Georgia Public Education Report Card

## Fulton County Heritage Elementary School

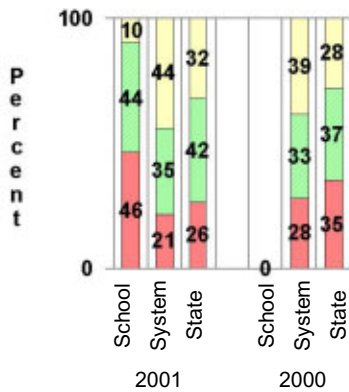
### CRITERION-REFERENCED ASSESSMENTS

#### Criterion-Referenced Competency Tests (CRCTs)

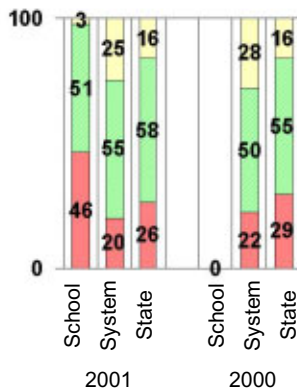
Percentage of Students Scoring in the Indicated Achievement Levels

Each chart reflects data for two years of testing.

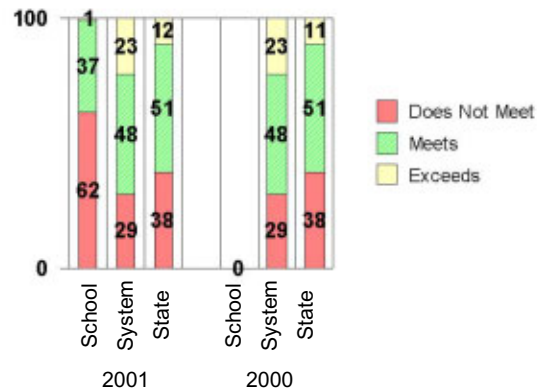
Grade 4 Reading



Grade 4 Language Arts



Grade 4 Mathematics



### PERFORMANCE ASSESSMENTS

#### Grade 5 Writing Assessment

Percent at Developmental Stages:	2000-2001			1999-2000			1998-99		
	School	System	State	School	System	State	School	System	State
<b>Stage 1:</b> The Emerging Writer	5%	1%	1%	0%	1%	1%	0%	0%	1%
<b>Stage 2:</b> The Developing Writer	6%	2%	2%	0%	3%	2%	0%	2%	2%
<b>Stage 3:</b> The Focusing Writer	29%	14%	17%	0%	16%	19%	0%	14%	19%
<b>Stage 4:</b> The Experimenting Writer	52%	34%	42%	0%	38%	41%	0%	35%	41%
<b>Stage 5:</b> The Engaging Writer	8%	32%	29%	0%	29%	27%	0%	31%	27%
<b>Stage 6:</b> The Extending Writer	0%	17%	9%	0%	14%	9%	0%	18%	11%

# 2000-2001 Georgia Public Education Report Card

## Fulton County

### Heritage Elementary School

#### CERTIFIED PERSONNEL DATA

		Administrators	Support Personnel	PK-12 Teachers
Positions	Number	2.37	3.66	37.54
	Average Contract Days	232.39	195.87	190.40
Personnel	Full-time	2	2	36
	Part-time	8	8	7
Gender	Male	0	1	9
	Female	10	9	34
Certificate Level	4 Yr Bachelor's	5	3	28
	5 Yr Master's	3	5	15
	6 Yr Specialist's	1	2	0
	7 Yr Doctoral	1	0	0
	Other *	0	0	0
Years Experience	<1	1	1	15
	1-10	3	5	19
	11-20	2	2	4
	21-30	4	2	5
	>30	0	0	0
	Average	14.40	11.60	6.21

\* Includes One- and Two-Year Vocational Certificates.

#### ACCREDITATION DATA

Accredited by Southern Association of Colleges and Schools (SACS):  
Elementary/Middle Commission

#### AWARDS/RECOGNITION DATA

Schools in Georgia may receive recognition in the following programs:

- Charter School
- Pay for Performance Program
- Georgia School of Excellence
- National Blue Ribbon School

Heritage Elementary School did not receive recognition in any of these programs during the 2000-2001 school year.

For more information about these programs, contact your school principal or the school system central office.