

2000-2001 Georgia Public Education Report Card

Fulton County

Heards Ferry Elementary School - 6603056

Grade Range - PK-5

The Georgia Public Education Report Card is designed to assist systems and schools in educational improvement. This report card contains a variety of data elements. An explanation of the terms is provided as a companion to the report card data. Please refer to the definitions for the most effective use of the reported data.

STUDENT DATA

Total Enrollment, by Race/Ethnicity and Gender

Total	Black	White	Hispanic	Asian	American Indian	Multi-Racial	Male	Female
K-5: 493	76 15.4%	232 47.1%	165 33.5%	10 2.0%	0 0.0%	10 2.0%	269 54.6%	224 45.4%
PK: 32	4 12.5%	15 46.9%	8 25.0%	1 3.1%	0 0.0%	4 12.5%	14 43.8%	18 56.3%

Enrollment in Selected Programs

Program	Program Enrollment	% of Student Population
Gifted (Grades K-12)	74	15.0%
Alternative Programs (Grades K-12)	1	0.2%

Enrollment in Compensatory Programs

Program	Program Enrollment	% of Student Population
Special Education (Grades K-12) (PK)	66 19	13.4% N/A
English to Speakers of Other Languages (ESOL) (Grades K-12)	112	22.7%
Early Intervention Program (EIP) (Grades K-3)	104	35.5%
Remedial Education (Grades 4-5, 9-12)	42	21.0%
Title I (Grades K-12)	This School has no Title I Program.	

Students Eligible to Receive Free/Reduced-price Lunches

	Number	Percent
School	211	40.2%
System	21,659	31.6%

Dropout Rate *

	Number	Percent
School	N/A	N/A
System	N/A	N/A

* - Dropouts are not reported for grades PK-5.

Retained Students, by Race/Ethnicity and Gender

Total	Black	White	Hispanic	Asian	American Indian	Multi-Racial	Male	Female
7	1 14.3%	0 0.0%	6 85.7%	0 0.0%	0 0.0%	0 0.0%	3 42.9%	4 57.1%

2000-2001 Georgia Public Education Report Card

Fulton County

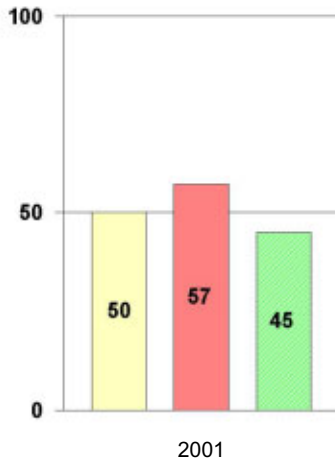
Heards Ferry Elementary School

NORM-REFERENCED ASSESSMENTS

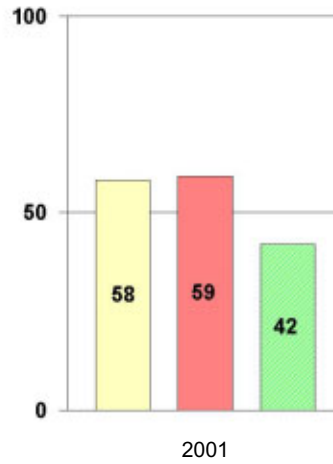
Stanford 9 Tests, Grade 3

Each chart reflects data for one year of testing.

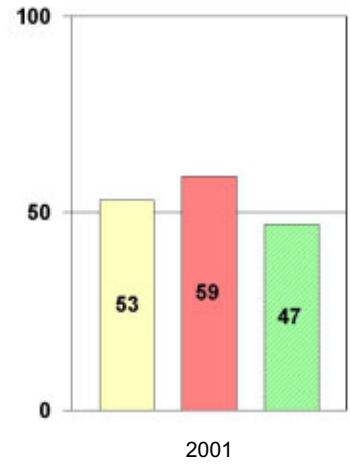
Total Reading



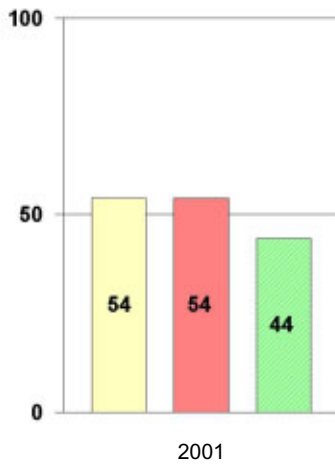
Total Mathematics



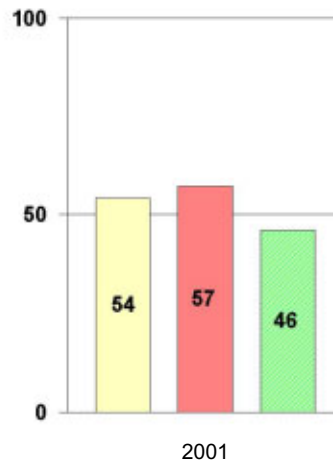
Language



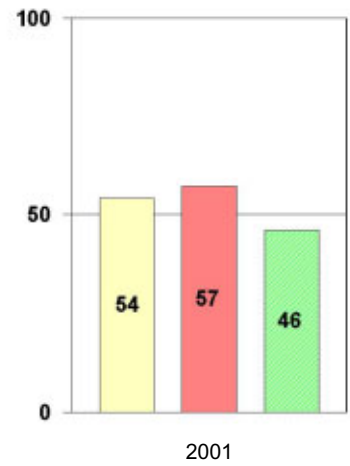
Science



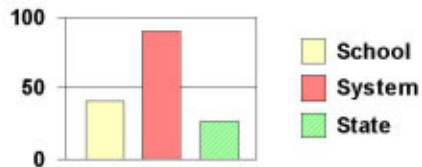
Social Science



Complete Battery



Legend



2000-2001 Georgia Public Education Report Card

Fulton County

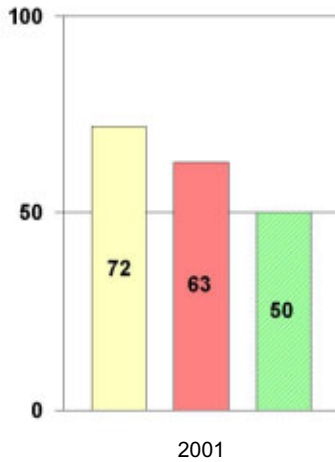
Heards Ferry Elementary School

NORM-REFERENCED ASSESSMENTS

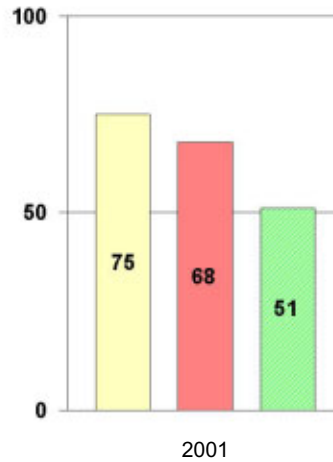
Stanford 9 Tests, Grade 5

Each chart reflects data for one year of testing.

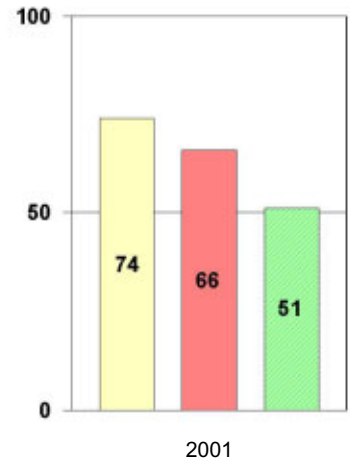
Total Reading



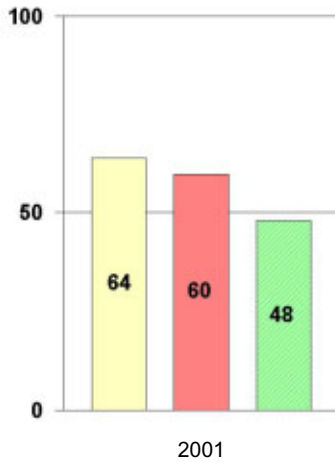
Total Mathematics



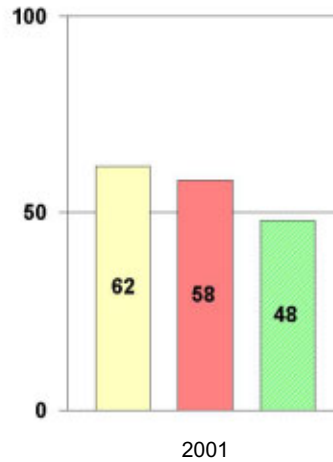
Language



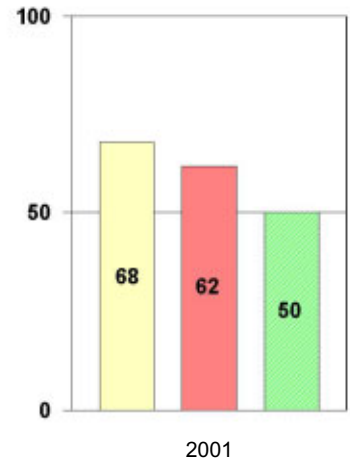
Science



Social Science



Complete Battery



Legend



2000-2001 Georgia Public Education Report Card

Fulton County Heards Ferry Elementary School

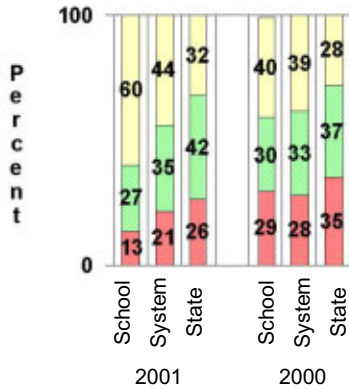
CRITERION-REFERENCED ASSESSMENTS

Criterion-Referenced Competency Tests (CRCTs)

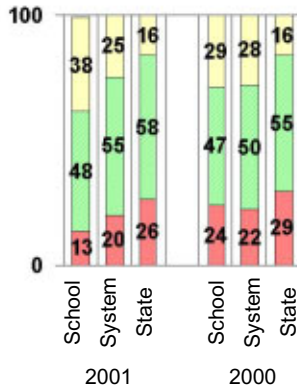
Percentage of Students Scoring in the Indicated Achievement Levels

Each chart reflects data for two years of testing.

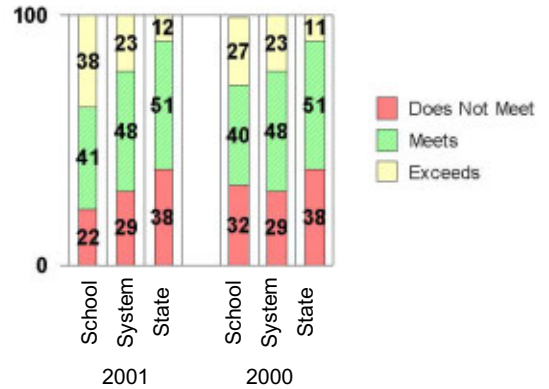
Grade 4 Reading



Grade 4 Language Arts



Grade 4 Mathematics



PERFORMANCE ASSESSMENTS

Grade 5 Writing Assessment

Percent at Developmental Stages:	2000-2001			1999-2000			1998-99		
	School	System	State	School	System	State	School	System	State
Stage 1: The Emerging Writer	1%	1%	1%	0%	1%	1%	0%	0%	1%
Stage 2: The Developing Writer	1%	2%	2%	2%	3%	2%	1%	2%	2%
Stage 3: The Focusing Writer	12%	14%	17%	21%	16%	19%	20%	14%	19%
Stage 4: The Experimenting Writer	35%	34%	42%	39%	38%	41%	44%	35%	41%
Stage 5: The Engaging Writer	35%	32%	29%	26%	29%	27%	27%	31%	27%
Stage 6: The Extending Writer	16%	17%	9%	12%	14%	9%	8%	18%	11%

2000-2001 Georgia Public Education Report Card

Fulton County

Heards Ferry Elementary School

CERTIFIED PERSONNEL DATA

		Administrators	Support Personnel	PK-12 Teachers
Positions	Number	3.34	4.24	42.58
	Average Contract Days	220.04	194.96	190.35
Personnel	Full-time	3	3	40
	Part-time	9	7	8
Gender	Male	0	0	4
	Female	12	10	44
Certificate Level	4 Yr Bachelor's	4	1	26
	5 Yr Master's	6	7	22
	6 Yr Specialist's	2	2	0
	7 Yr Doctoral	0	0	0
	Other *	0	0	0
Years Experience	<1	0	0	2
	1-10	3	3	28
	11-20	4	3	7
	21-30	3	2	9
	>30	2	2	2
	Average	17.92	17.70	10.92

* Includes One- and Two-Year Vocational Certificates.

ACCREDITATION DATA

Accredited by Southern Association of Colleges and Schools (SACS):
Elementary/Middle Commission

AWARDS/RECOGNITION DATA

Schools in Georgia may receive recognition in the following programs:

- Charter School
- Pay for Performance Program
- Georgia School of Excellence
- National Blue Ribbon School

Heards Ferry Elementary School did not receive recognition in any of these programs during the 2000-2001 school year.

For more information about these programs, contact your school principal or the school system central office.