

2000-2001 Georgia Public Education Report Card

Fulton County

Haynes Bridge Middle School - 6600384

Grade Range - 6-8

The Georgia Public Education Report Card is designed to assist systems and schools in educational improvement. This report card contains a variety of data elements. An explanation of the terms is provided as a companion to the report card data. Please refer to the definitions for the most effective use of the reported data.

STUDENT DATA

Total Enrollment, by Race/Ethnicity and Gender

Total	Black	White	Hispanic	Asian	American Indian	Multi-Racial	Male	Female
6-8: 985	145 14.7%	746 75.7%	35 3.6%	43 4.4%	0 0.0%	16 1.6%	525 53.3%	460 46.7%

Enrollment in Selected Programs

Program	Program Enrollment	% of Student Population
Gifted (Grades K-12)	335	34.0%
Vocational Labs (Grades 9-12)	0	0.0%
Alternative Programs (Grades K-12)	4	0.4%

Enrollment in Compensatory Programs

Program	Program Enrollment	% of Student Population
Special Education (Grades K-12)	122	12.4%
(PK)	0	N/A
English to Speakers of Other Languages (ESOL) (Grades K-12)	0	0.0%
Title I (Grades K-12)	This School has no Title I Program.	

Students Eligible to Receive Free/Reduced-price Lunches

	Number	Percent
School	75	7.6%
System	21,659	31.6%

Dropout Rate for Grades 6-8

	Number	Percent
School	0	0.0%
System	44	0.2%

Retained Students, by Race/Ethnicity and Gender

Total	Black	White	Hispanic	Asian	American Indian	Multi-Racial	Male	Female
1	1 100.0%	0 0.0%	0 0.0%	0 0.0%	0 0.0%	0 0.0%	1 100.0%	0 0.0%

2000-2001 Georgia Public Education Report Card

Fulton County

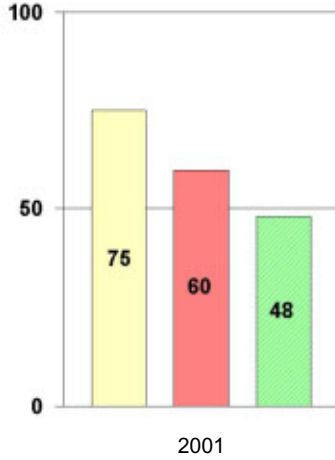
Haynes Bridge Middle School

NORM-REFERENCED ASSESSMENTS

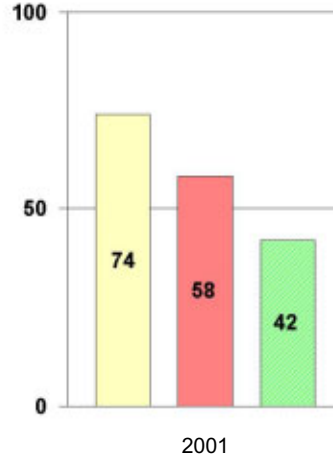
Stanford 9 Tests, Grade 8

Each chart reflects data for one year of testing.

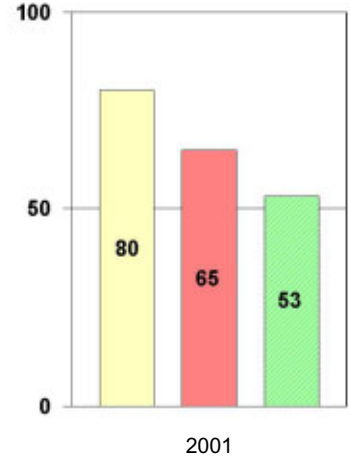
Total Reading



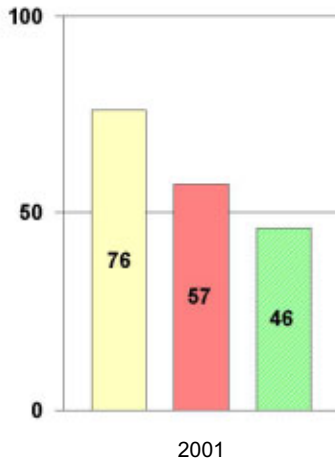
Total Mathematics



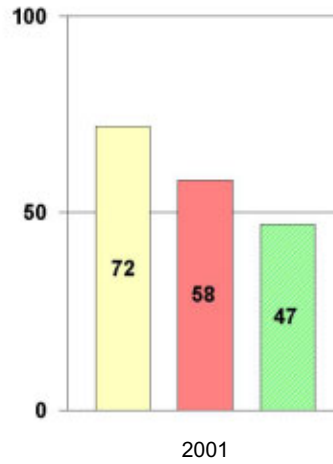
Language



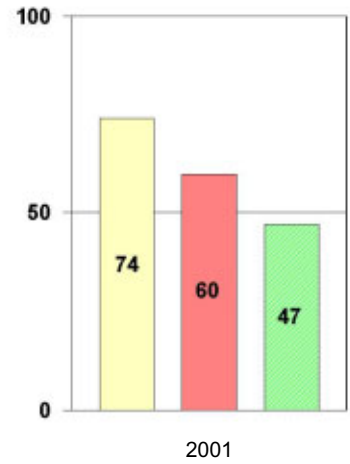
Science



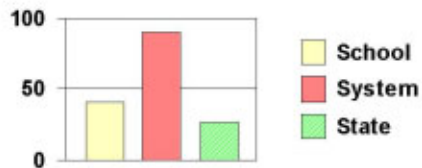
Social Science



Complete Battery



Legend



2000-2001 Georgia Public Education Report Card

Fulton County

Haynes Bridge Middle School

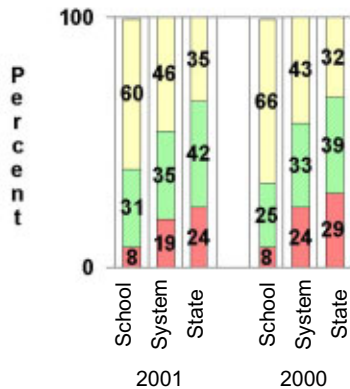
CRITERION-REFERENCED ASSESSMENTS

Criterion-Referenced Competency Tests (CRCTs)

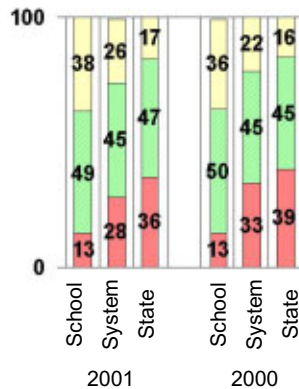
Percentage of Students Scoring in the Indicated Achievement Levels

Each chart reflects data for two years of testing.

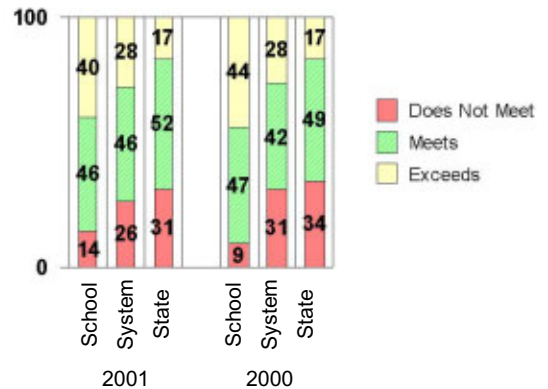
Grade 6 Reading



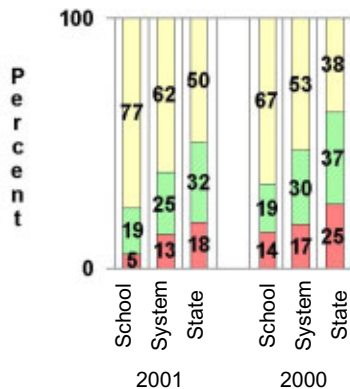
Grade 6 Language Arts



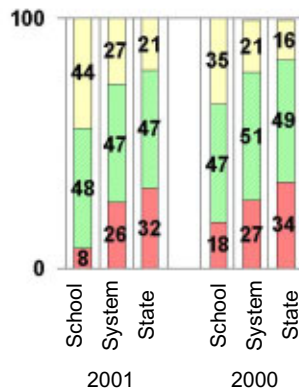
Grade 6 Mathematics



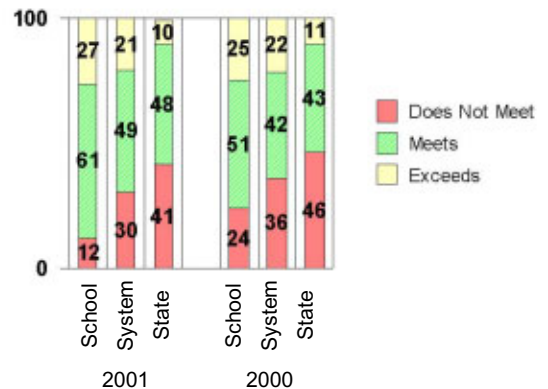
Grade 8 Reading



Grade 8 Language Arts



Grade 8 Mathematics



PERFORMANCE ASSESSMENTS

Grade 8 Writing Assessment

		2000-2001			1999-2000		
Categories of Scaled Scores:		School	System	State	School	System	State
Not on Target	(300-348)	4%	12%	17%	13%	19%	28%
On Target	(349-367)	70%	67%	72%	56%	59%	58%
Exceeds Target	(368-400)	26%	20%	12%	31%	22%	13%
Average Scaled Score: (Range 300-400)		363	360	357	361	359	354

2000-2001 Georgia Public Education Report Card

Fulton County

Haynes Bridge Middle School

CERTIFIED PERSONNEL DATA

		Administrators	Support Personnel	PK-12 Teachers
Positions	Number	4.78	6.40	71.10
	Average Contract Days	231.87	197.97	190.00
Personnel	Full-time	4	5	69
	Part-time	17	11	5
Gender	Male	5	3	12
	Female	16	13	62
Certificate Level	4 Yr Bachelor's	5	2	38
	5 Yr Master's	12	12	34
	6 Yr Specialist's	3	1	1
	7 Yr Doctoral	1	1	1
	Other *	0	0	0
Years Experience	<1	0	1	5
	1-10	3	6	34
	11-20	7	5	17
	21-30	10	4	17
	>30	1	0	1
	Average	21.14	13.38	12.70

* Includes One- and Two-Year Vocational Certificates.

ACCREDITATION DATA

Accredited by Southern Association of Colleges and Schools (SACS):
Elementary/Middle Commission

AWARDS/RECOGNITION DATA

Schools in Georgia may receive recognition in the following programs:

- Charter School
- Pay for Performance Program
- Georgia School of Excellence
- National Blue Ribbon School

Haynes Bridge Middle School did not receive recognition in any of these programs during the 2000-2001 school year.

For more information about these programs, contact your school principal or the school system central office.