

2000-2001 Georgia Public Education Report Card

Fulton County

Tubman Elementary School - 6600290

Grade Range - PK-5

The Georgia Public Education Report Card is designed to assist systems and schools in educational improvement. This report card contains a variety of data elements. An explanation of the terms is provided as a companion to the report card data. Please refer to the definitions for the most effective use of the reported data.

STUDENT DATA

Total Enrollment, by Race/Ethnicity and Gender

Total		Black	White	Hispanic	Asian	American Indian	Multi-Racial	Male	Female
K-5:	597	551 92.3%	2 0.3%	27 4.5%	8 1.3%	1 0.2%	8 1.3%	312 52.3%	285 47.7%
PK:	64	61 95.3%	0 0.0%	3 4.7%	0 0.0%	0 0.0%	0 0.0%	33 51.6%	31 48.4%

Enrollment in Selected Programs

Program	Program Enrollment	% of Student Population
Gifted (Grades K-12)	0	0.0%
Alternative Programs (Grades K-12)	0	0.0%

Enrollment in Compensatory Programs

Program	Program Enrollment	% of Student Population
Special Education (Grades K-12) (PK)	55 16	9.2% N/A
English to Speakers of Other Languages (ESOL) (Grades K-12)	23	3.9%
Early Intervention Program (EIP) (Grades K-3)	120	29.6%
Remedial Education (Grades 4-5, 9-12)	56	29.3%
Title I (Grades K-12)	This School has a Schoolwide Title I Program.	

Students Eligible to Receive Free/Reduced-price Lunches

	Number	Percent
School	587	88.8%
System	21,659	31.6%

Dropout Rate *

	Number	Percent
School	N/A	N/A
System	N/A	N/A

* - Dropouts are not reported for grades PK-5.

Retained Students, by Race/Ethnicity and Gender

Total	Black	White	Hispanic	Asian	American Indian	Multi-Racial	Male	Female
22	21 95.5%	0 0.0%	0 0.0%	0 0.0%	0 0.0%	1 4.5%	14 63.6%	8 36.4%

2000-2001 Georgia Public Education Report Card

Fulton County

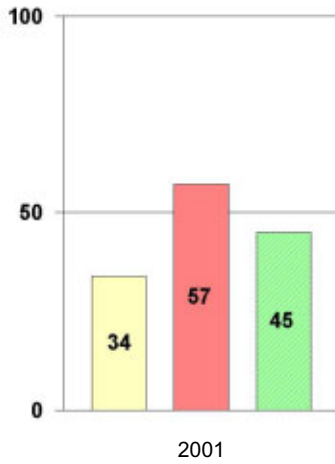
Tubman Elementary School

NORM-REFERENCED ASSESSMENTS

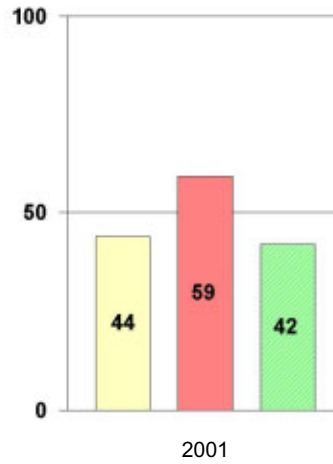
Stanford 9 Tests, Grade 3

Each chart reflects data for one year of testing.

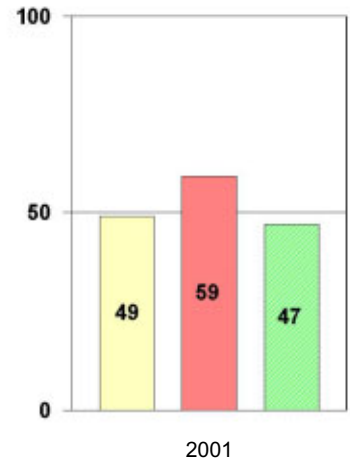
Total Reading



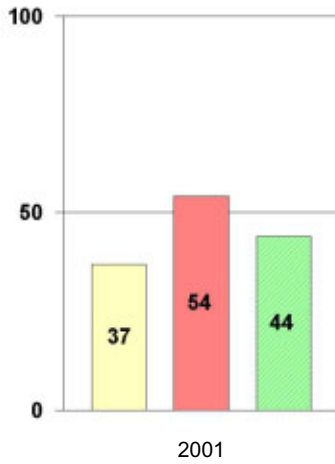
Total Mathematics



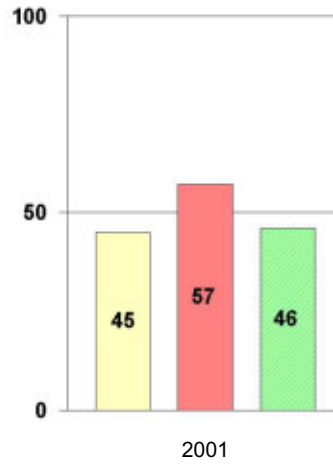
Language



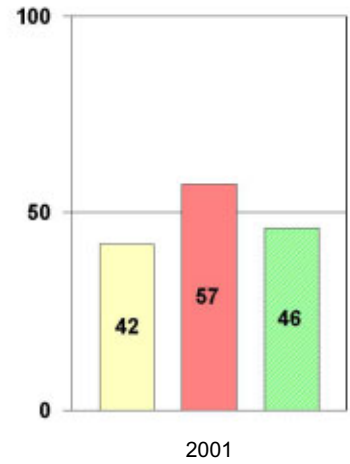
Science



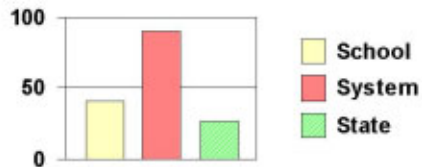
Social Science



Complete Battery



Legend



2000-2001 Georgia Public Education Report Card

Fulton County

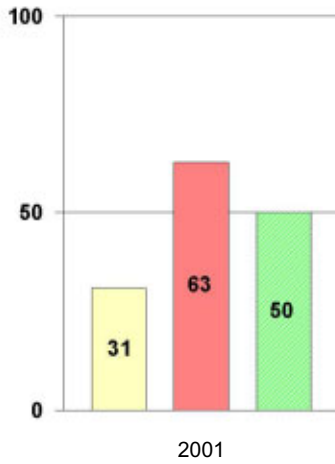
Tubman Elementary School

NORM-REFERENCED ASSESSMENTS

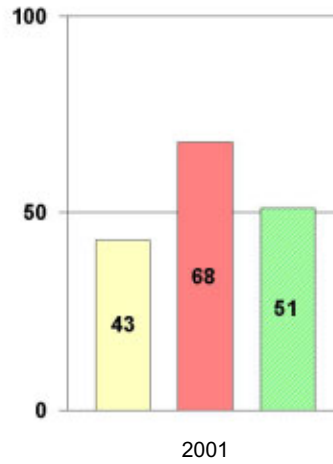
Stanford 9 Tests, Grade 5

Each chart reflects data for one year of testing.

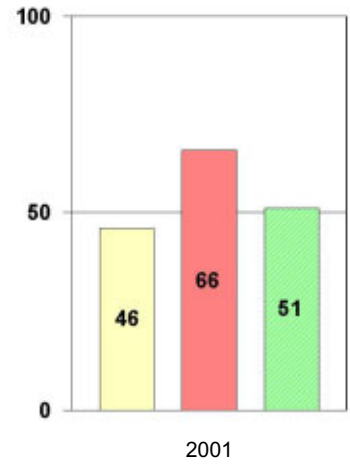
Total Reading



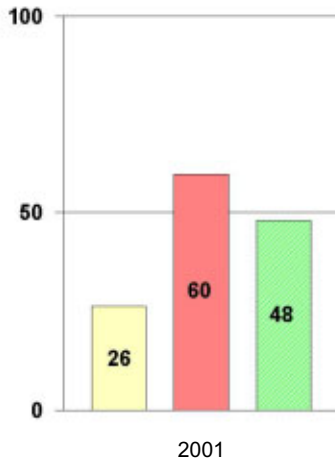
Total Mathematics



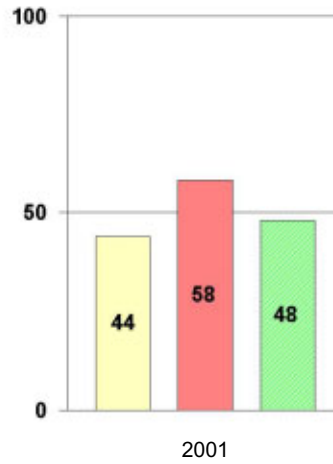
Language



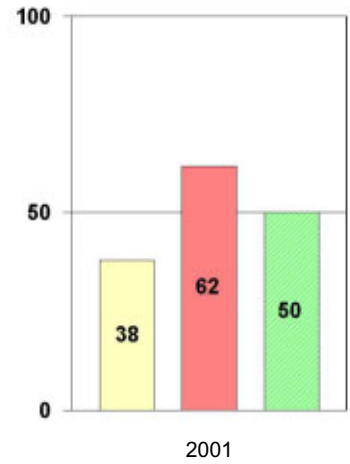
Science



Social Science



Complete Battery



Legend



2000-2001 Georgia Public Education Report Card

Fulton County Tubman Elementary School

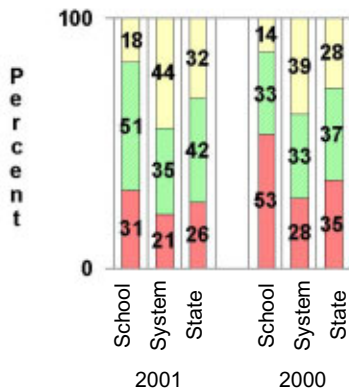
CRITERION-REFERENCED ASSESSMENTS

Criterion-Referenced Competency Tests (CRCTs)

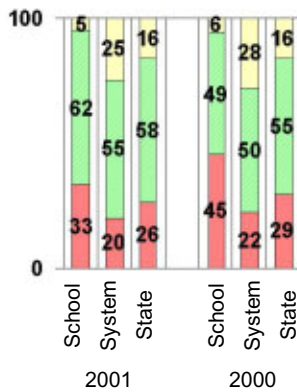
Percentage of Students Scoring in the Indicated Achievement Levels

Each chart reflects data for two years of testing.

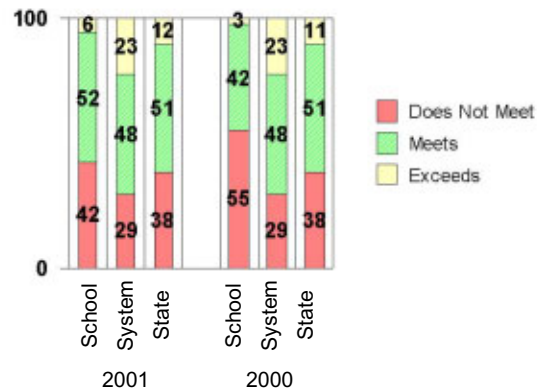
Grade 4 Reading



Grade 4 Language Arts



Grade 4 Mathematics



PERFORMANCE ASSESSMENTS

Grade 5 Writing Assessment

Percent at Developmental Stages:	2000-2001			1999-2000			1998-99		
	School	System	State	School	System	State	School	System	State
Stage 1: The Emerging Writer	0%	1%	1%	0%	1%	1%	1%	0%	1%
Stage 2: The Developing Writer	2%	2%	2%	5%	3%	2%	8%	2%	2%
Stage 3: The Focusing Writer	24%	14%	17%	21%	16%	19%	22%	14%	19%
Stage 4: The Experimenting Writer	56%	34%	42%	42%	38%	41%	39%	35%	41%
Stage 5: The Engaging Writer	18%	32%	29%	30%	29%	27%	26%	31%	27%
Stage 6: The Extending Writer	0%	17%	9%	2%	14%	9%	5%	18%	11%

2000-2001 Georgia Public Education Report Card

Fulton County

Tubman Elementary School

CERTIFIED PERSONNEL DATA

		Administrators	Support Personnel	PK-12 Teachers
Positions	Number	2.36	5.84	47.02
	Average Contract Days	232.52	198.02	190.32
Personnel	Full-time	2	5	45
	Part-time	9	6	9
Gender	Male	1	0	5
	Female	10	11	49
Certificate Level	4 Yr Bachelor's	3	1	29
	5 Yr Master's	5	8	21
	6 Yr Specialist's	3	2	4
	7 Yr Doctoral	0	0	0
	Other *	0	0	0
Years Experience	<1	0	0	2
	1-10	4	4	27
	11-20	3	3	16
	21-30	3	3	6
	>30	1	1	3
	Average	16.73	15.09	11.65

* Includes One- and Two-Year Vocational Certificates.

ACCREDITATION DATA

Accredited by Southern Association of Colleges and Schools (SACS):
Elementary/Middle Commission

AWARDS/RECOGNITION DATA

Schools in Georgia may receive recognition in the following programs:

- Charter School
- Pay for Performance Program
- Georgia School of Excellence
- National Blue Ribbon School

Tubman Elementary School did not receive recognition in any of these programs during the 2000-2001 school year.

For more information about these programs, contact your school principal or the school system central office.