

2000-2001 Georgia Public Education Report Card

Fulton County

Hapeville Elementary School - 6600192

Grade Range - PK-5

The Georgia Public Education Report Card is designed to assist systems and schools in educational improvement. This report card contains a variety of data elements. An explanation of the terms is provided as a companion to the report card data. Please refer to the definitions for the most effective use of the reported data.

STUDENT DATA

Total Enrollment, by Race/Ethnicity and Gender

Total	Black	White	Hispanic	Asian	American Indian	Multi-Racial	Male	Female
K-5: 876	386 44.1%	168 19.2%	215 24.5%	66 7.5%	1 0.1%	40 4.6%	451 51.5%	425 48.5%
PK: 86	33 38.4%	12 14.0%	33 38.4%	4 4.7%	0 0.0%	4 4.7%	47 54.7%	39 45.3%

Enrollment in Selected Programs

Program	Program Enrollment	% of Student Population
Gifted (Grades K-12)	12	1.4%
Alternative Programs (Grades K-12)	0	0.0%

Enrollment in Compensatory Programs

Program	Program Enrollment	% of Student Population
Special Education (Grades K-12) (PK)	123 9	14.0% N/A
English to Speakers of Other Languages (ESOL) (Grades K-12)	121	13.8%
Early Intervention Program (EIP) (Grades K-3)	180	30.4%
Remedial Education (Grades 4-5, 9-12)	92	32.5%
Title I (Grades K-12)	This School has a Schoolwide Title I Program.	

Students Eligible to Receive Free/Reduced-price Lunches

	Number	Percent
School	820	85.2%
System	21,659	31.6%

Dropout Rate *

	Number	Percent
School	N/A	N/A
System	N/A	N/A

* - Dropouts are not reported for grades PK-5.

Retained Students, by Race/Ethnicity and Gender

Total	Black	White	Hispanic	Asian	American Indian	Multi-Racial	Male	Female
40	14 35.0%	12 30.0%	13 32.5%	0 0.0%	0 0.0%	1 2.5%	29 72.5%	11 27.5%

2000-2001 Georgia Public Education Report Card Fulton County

Hapeville Elementary School

NORM-REFERENCED ASSESSMENTS

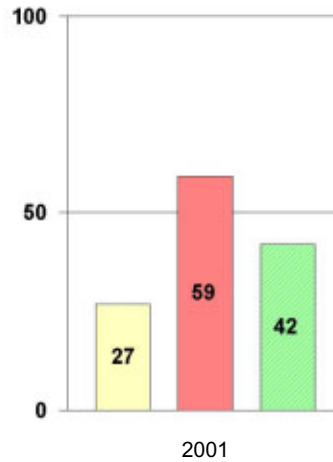
Stanford 9 Tests, Grade 3

Each chart reflects data for one year of testing.

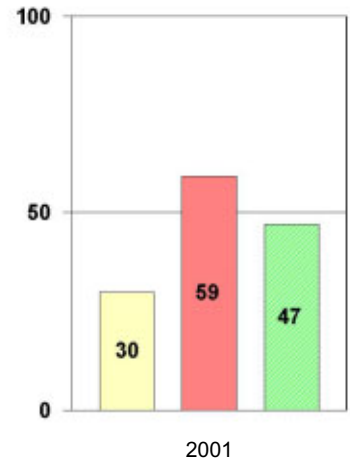
Total Reading



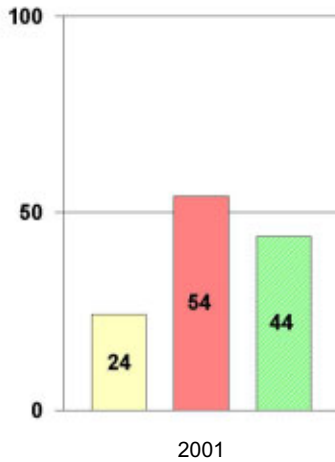
Total Mathematics



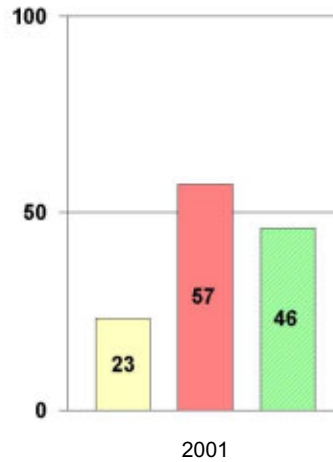
Language



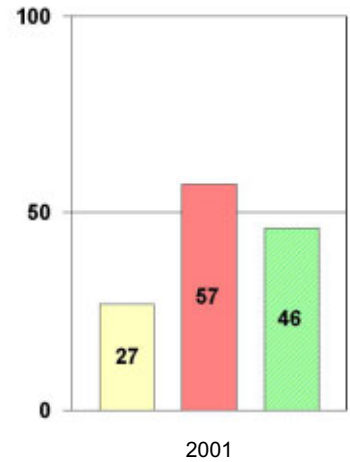
Science



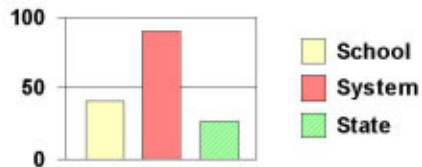
Social Science



Complete Battery



Legend



2000-2001 Georgia Public Education Report Card

Fulton County

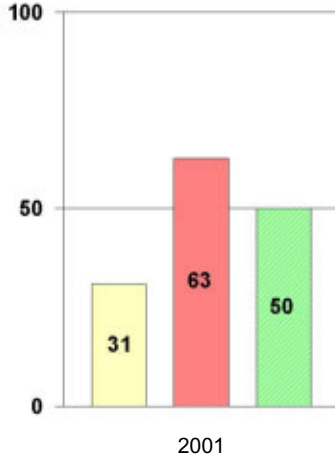
Hapeville Elementary School

NORM-REFERENCED ASSESSMENTS

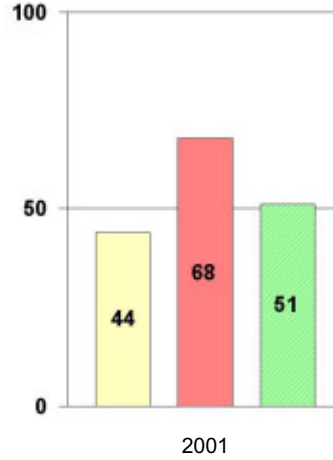
Stanford 9 Tests, Grade 5

Each chart reflects data for one year of testing.

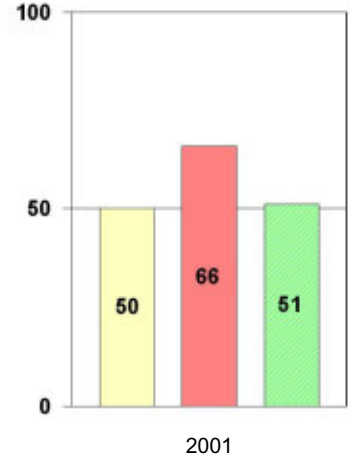
Total Reading



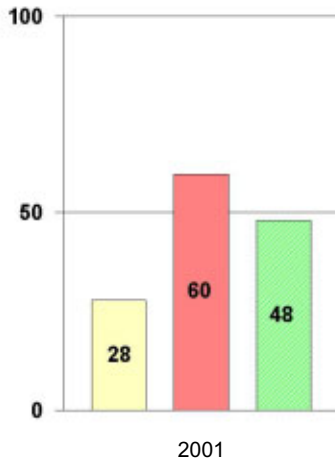
Total Mathematics



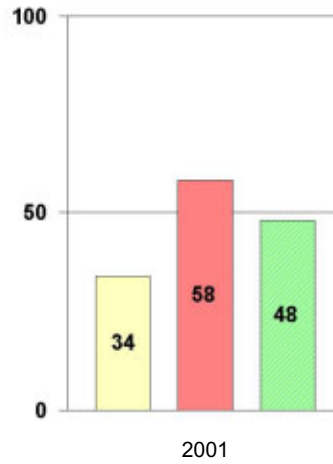
Language



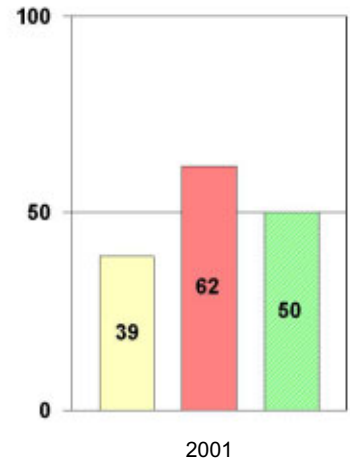
Science



Social Science



Complete Battery



Legend



2000-2001 Georgia Public Education Report Card

Fulton County Hapeville Elementary School

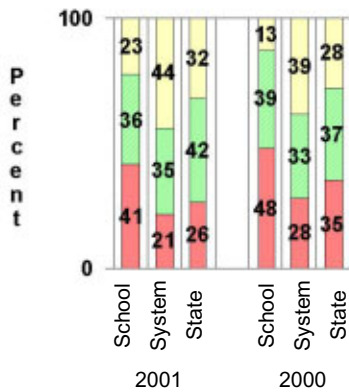
CRITERION-REFERENCED ASSESSMENTS

Criterion-Referenced Competency Tests (CRCTs)

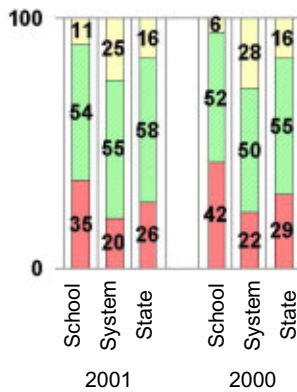
Percentage of Students Scoring in the Indicated Achievement Levels

Each chart reflects data for two years of testing.

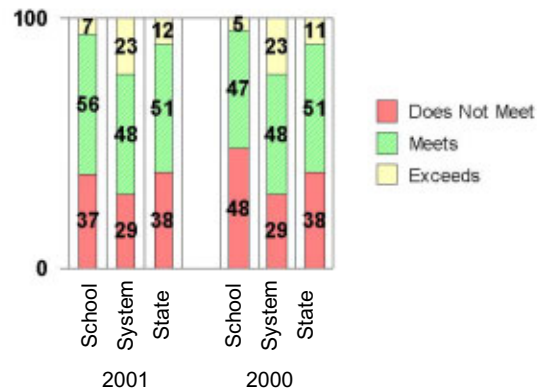
Grade 4 Reading



Grade 4 Language Arts



Grade 4 Mathematics



PERFORMANCE ASSESSMENTS

Grade 5 Writing Assessment

Percent at Developmental Stages:	2000-2001			1999-2000			1998-99		
	School	System	State	School	System	State	School	System	State
Stage 1: The Emerging Writer	2%	1%	1%	3%	1%	1%	1%	0%	1%
Stage 2: The Developing Writer	4%	2%	2%	5%	3%	2%	2%	2%	2%
Stage 3: The Focusing Writer	23%	14%	17%	21%	16%	19%	32%	14%	19%
Stage 4: The Experimenting Writer	51%	34%	42%	51%	38%	41%	50%	35%	41%
Stage 5: The Engaging Writer	19%	32%	29%	15%	29%	27%	9%	31%	27%
Stage 6: The Extending Writer	1%	17%	9%	4%	14%	9%	7%	18%	11%

2000-2001 Georgia Public Education Report Card

Fulton County

Hapeville Elementary School

CERTIFIED PERSONNEL DATA

		Administrators	Support Personnel	PK-12 Teachers
Positions	Number	2.51	7.73	62.24
	Average Contract Days	229.79	196.89	190.24
Personnel	Full-time	2	6	60
	Part-time	9	7	7
Gender	Male	1	3	8
	Female	10	10	59
Certificate Level	4 Yr Bachelor's	7	1	38
	5 Yr Master's	3	4	27
	6 Yr Specialist's	1	8	2
	7 Yr Doctoral	0	0	0
	Other *	0	0	0
Years Experience	<1	0	1	7
	1-10	8	5	46
	11-20	3	3	7
	21-30	0	4	7
	>30	0	0	0
	Average	7.64	13.77	7.16

* Includes One- and Two-Year Vocational Certificates.

ACCREDITATION DATA

Accredited by Southern Association of Colleges and Schools (SACS):
Elementary/Middle Commission

AWARDS/RECOGNITION DATA

Schools in Georgia may receive recognition in the following programs:

- Charter School
- Pay for Performance Program
- Georgia School of Excellence
- National Blue Ribbon School

Hapeville Elementary School did not receive recognition in any of these programs during the 2000-2001 school year.

For more information about these programs, contact your school principal or the school system central office.