

# 2000-2001 Georgia Public Education Report Card

## Fulton County

### Gullatt Elementary School - 6600276

Grade Range - PK-5

The Georgia Public Education Report Card is designed to assist systems and schools in educational improvement. This report card contains a variety of data elements. An explanation of the terms is provided as a companion to the report card data. Please refer to the definitions for the most effective use of the reported data.

#### STUDENT DATA

##### Total Enrollment, by Race/Ethnicity and Gender

Total	Black	White	Hispanic	Asian	American Indian	Multi-Racial	Male	Female
K-5: 514	483 94.0%	17 3.3%	3 0.6%	0 0.0%	0 0.0%	11 2.1%	249 48.4%	265 51.6%
PK: 40	38 95.0%	1 2.5%	0 0.0%	1 2.5%	0 0.0%	0 0.0%	22 55.0%	18 45.0%

##### Enrollment in Selected Programs

Program	Program Enrollment	% of Student Population
Gifted (Grades K-12)	8	1.6%
Alternative Programs (Grades K-12)	0	0.0%

##### Enrollment in Compensatory Programs

Program	Program Enrollment	% of Student Population
Special Education (Grades K-12) (PK)	64 3	12.5% N/A
English to Speakers of Other Languages (ESOL) (Grades K-12)	0	0.0%
Early Intervention Program (EIP) (Grades K-3)	168	47.1%
Remedial Education (Grades 4-5, 9-12)	51	32.5%
Title I (Grades K-12)	This School has a Schoolwide Title I Program.	

##### Students Eligible to Receive Free/Reduced-price Lunches

	Number	Percent
School	462	83.4%
System	21,659	31.6%

##### Dropout Rate \*

	Number	Percent
School	N/A	N/A
System	N/A	N/A

\* - Dropouts are not reported for grades PK-5.

##### Retained Students, by Race/Ethnicity and Gender

Total	Black	White	Hispanic	Asian	American Indian	Multi-Racial	Male	Female
14	13 92.9%	1 7.1%	0 0.0%	0 0.0%	0 0.0%	0 0.0%	7 50.0%	7 50.0%

# 2000-2001 Georgia Public Education Report Card

## Fulton County

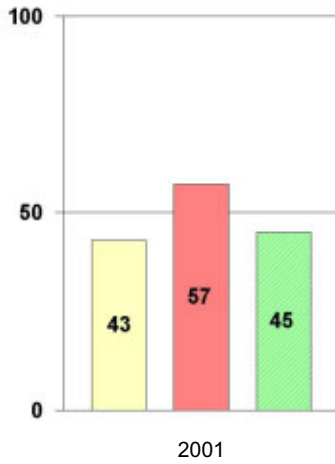
### Gullatt Elementary School

#### NORM-REFERENCED ASSESSMENTS

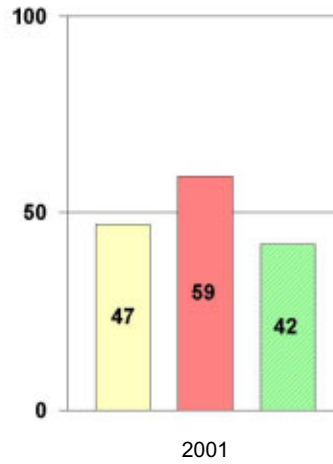
##### Stanford 9 Tests, Grade 3

Each chart reflects data for one year of testing.

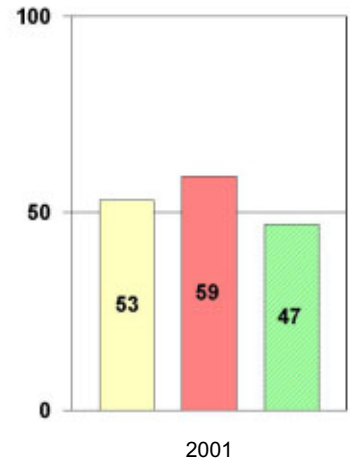
###### Total Reading



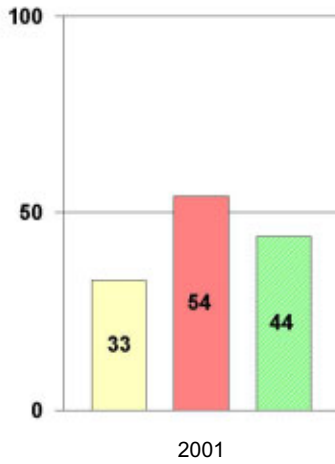
###### Total Mathematics



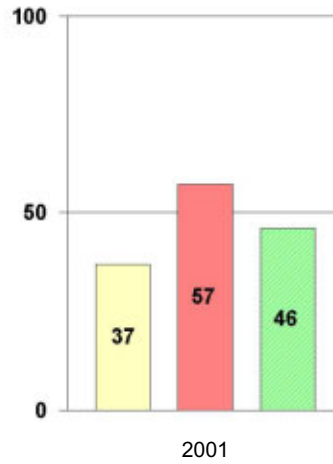
###### Language



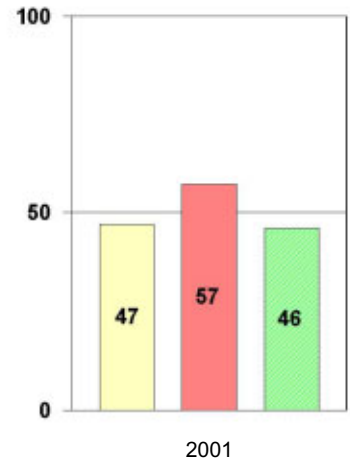
###### Science



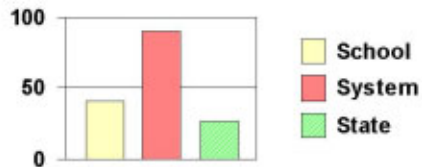
###### Social Science



###### Complete Battery



#### Legend



# 2000-2001 Georgia Public Education Report Card

## Fulton County

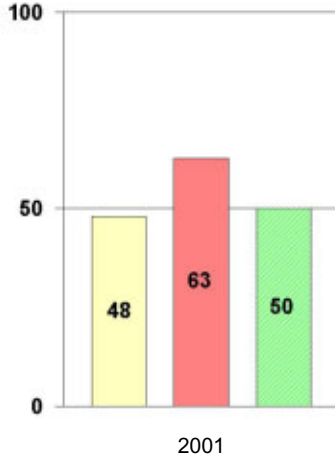
### Gullatt Elementary School

#### NORM-REFERENCED ASSESSMENTS

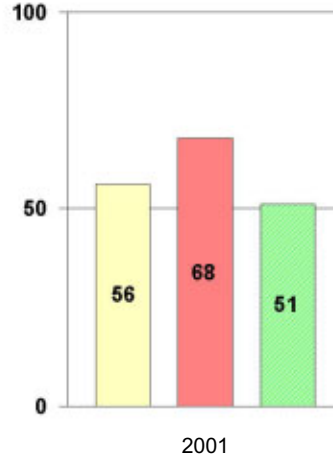
##### Stanford 9 Tests, Grade 5

Each chart reflects data for one year of testing.

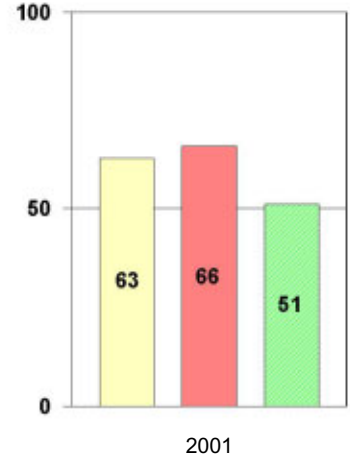
###### Total Reading



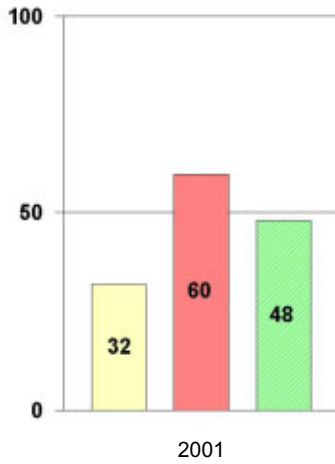
###### Total Mathematics



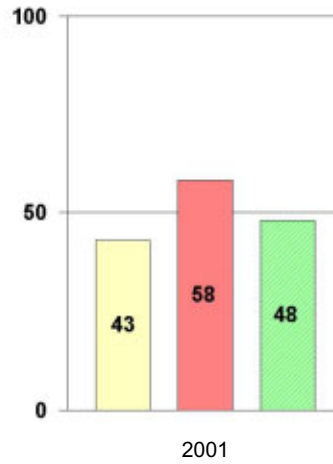
###### Language



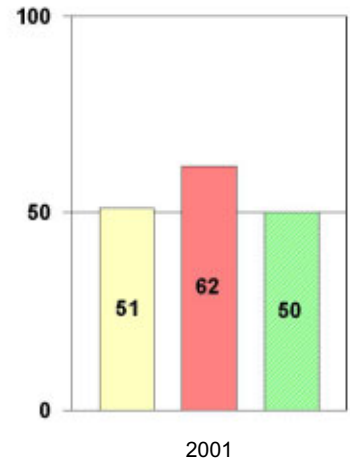
###### Science



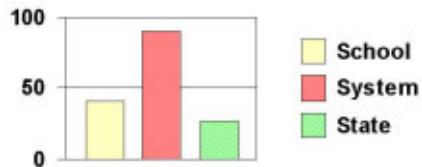
###### Social Science



###### Complete Battery



#### Legend



# 2000-2001 Georgia Public Education Report Card

## Fulton County Gullatt Elementary School

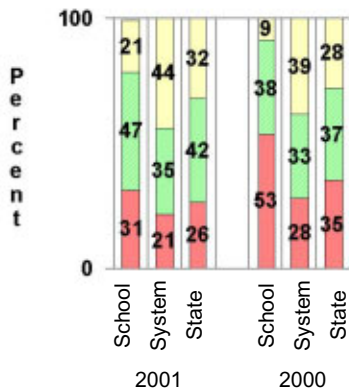
### CRITERION-REFERENCED ASSESSMENTS

#### Criterion-Referenced Competency Tests (CRCTs)

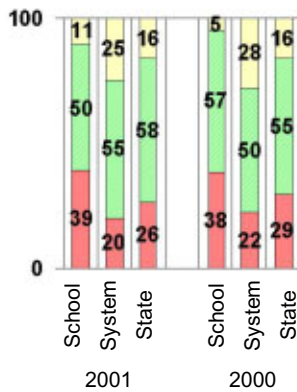
Percentage of Students Scoring in the Indicated Achievement Levels

Each chart reflects data for two years of testing.

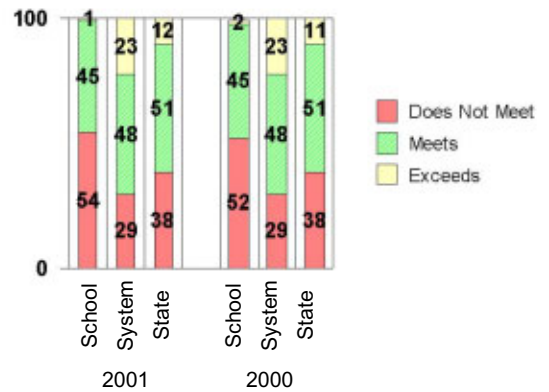
Grade 4 Reading



Grade 4 Language Arts



Grade 4 Mathematics



### PERFORMANCE ASSESSMENTS

#### Grade 5 Writing Assessment

Percent at Developmental Stages:	2000-2001			1999-2000			1998-99		
	School	System	State	School	System	State	School	System	State
<b>Stage 1:</b> The Emerging Writer	3%	1%	1%	0%	1%	1%	0%	0%	1%
<b>Stage 2:</b> The Developing Writer	0%	2%	2%	7%	3%	2%	0%	2%	2%
<b>Stage 3:</b> The Focusing Writer	16%	14%	17%	28%	16%	19%	20%	14%	19%
<b>Stage 4:</b> The Experimenting Writer	49%	34%	42%	43%	38%	41%	41%	35%	41%
<b>Stage 5:</b> The Engaging Writer	32%	32%	29%	17%	29%	27%	32%	31%	27%
<b>Stage 6:</b> The Extending Writer	0%	17%	9%	5%	14%	9%	8%	18%	11%

# 2000-2001 Georgia Public Education Report Card

## Fulton County

### Gullatt Elementary School

#### CERTIFIED PERSONNEL DATA

		Administrators	Support Personnel	PK-12 Teachers
Positions	Number	2.23	5.34	38.43
	Average Contract Days	235.07	196.53	190.39
Personnel	Full-time	2	2	37
	Part-time	5	11	3
Gender	Male	0	2	3
	Female	7	11	37
Certificate Level	4 Yr Bachelor's	3	2	22
	5 Yr Master's	3	8	15
	6 Yr Specialist's	1	3	3
	7 Yr Doctoral	0	0	0
	Other *	0	0	0
Years Experience	<1	0	0	0
	1-10	3	5	16
	11-20	0	3	12
	21-30	4	4	10
	>30	0	1	2
	Average	17.43	14.54	14.75

\* Includes One- and Two-Year Vocational Certificates.

#### ACCREDITATION DATA

Accredited by Southern Association of Colleges and Schools (SACS):  
Elementary/Middle Commission

#### AWARDS/RECOGNITION DATA

Schools in Georgia may receive recognition in the following programs:

- Charter School
- Pay for Performance Program
- Georgia School of Excellence
- National Blue Ribbon School

Gullatt Elementary School did not receive recognition in any of these programs during the 2000-2001 school year.

For more information about these programs, contact your school principal or the school system central office.