

2000-2001 Georgia Public Education Report Card

Fulton County

Jackson Elementary School - 6600175

Grade Range - PK-5

The Georgia Public Education Report Card is designed to assist systems and schools in educational improvement. This report card contains a variety of data elements. An explanation of the terms is provided as a companion to the report card data. Please refer to the definitions for the most effective use of the reported data.

STUDENT DATA

Total Enrollment, by Race/Ethnicity and Gender

Total	Black	White	Hispanic	Asian	American Indian	Multi-Racial	Male	Female
K-5: 699	176 25.2%	296 42.3%	165 23.6%	30 4.3%	0 0.0%	32 4.6%	363 51.9%	336 48.1%
PK: 86	9 10.5%	41 47.7%	29 33.7%	4 4.7%	0 0.0%	3 3.5%	47 54.7%	39 45.3%

Enrollment in Selected Programs

Program	Program Enrollment	% of Student Population
Gifted (Grades K-12)	46	6.6%
Alternative Programs (Grades K-12)	0	0.0%

Enrollment in Compensatory Programs

Program	Program Enrollment	% of Student Population
Special Education (Grades K-12)	73	10.4%
(PK)	38	N/A
English to Speakers of Other Languages (ESOL) (Grades K-12)	104	14.9%
Early Intervention Program (EIP) (Grades K-3)	108	23.2%
Remedial Education (Grades 4-5, 9-12)	53	22.6%
Title I (Grades K-12)	This School has no Title I Program.	

Students Eligible to Receive Free/Reduced-price Lunches

	Number	Percent
School	301	38.3%
System	21,659	31.6%

Dropout Rate *

	Number	Percent
School	N/A	N/A
System	N/A	N/A

* - Dropouts are not reported for grades PK-5.

Retained Students, by Race/Ethnicity and Gender

Total	Black	White	Hispanic	Asian	American Indian	Multi-Racial	Male	Female
11	3 27.3%	2 18.2%	6 54.5%	0 0.0%	0 0.0%	0 0.0%	8 72.7%	3 27.3%

2000-2001 Georgia Public Education Report Card

Fulton County

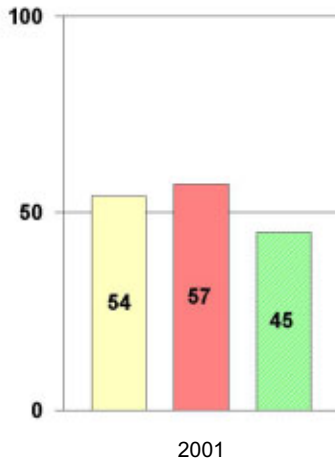
Jackson Elementary School

NORM-REFERENCED ASSESSMENTS

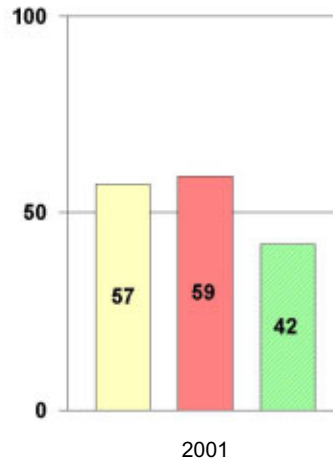
Stanford 9 Tests, Grade 3

Each chart reflects data for one year of testing.

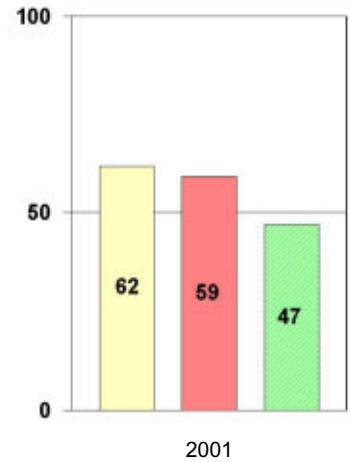
Total Reading



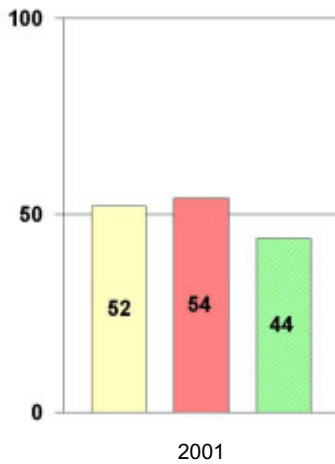
Total Mathematics



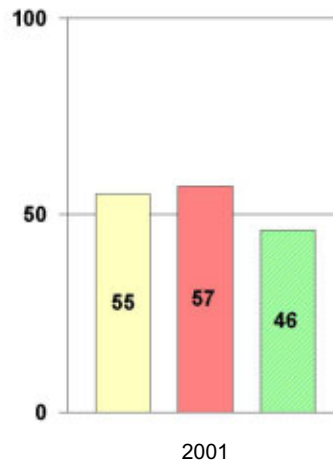
Language



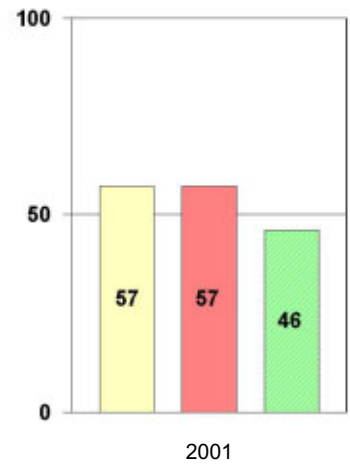
Science



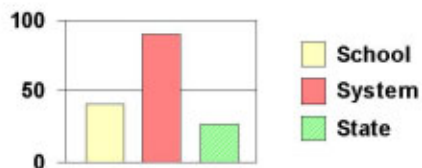
Social Science



Complete Battery



Legend



2000-2001 Georgia Public Education Report Card

Fulton County

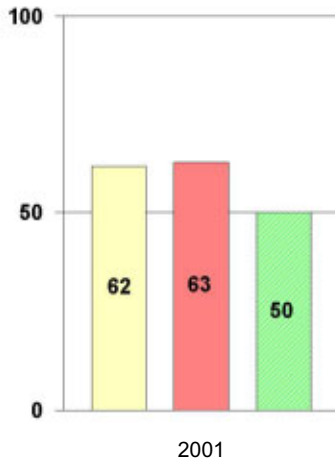
Jackson Elementary School

NORM-REFERENCED ASSESSMENTS

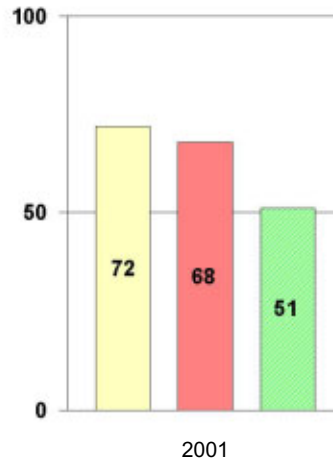
Stanford 9 Tests, Grade 5

Each chart reflects data for one year of testing.

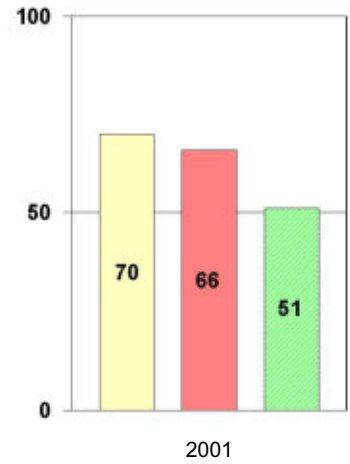
Total Reading



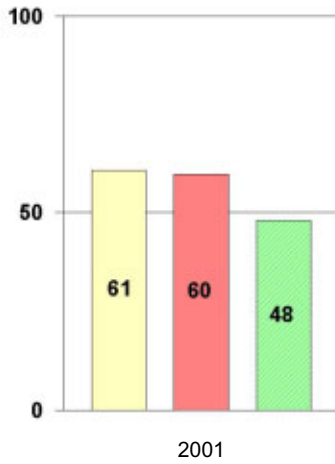
Total Mathematics



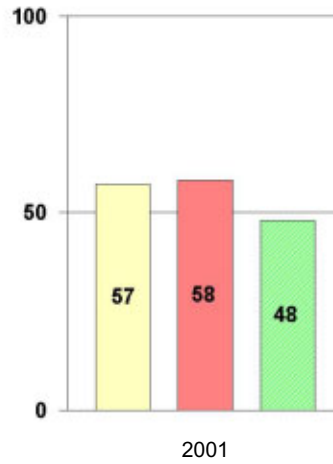
Language



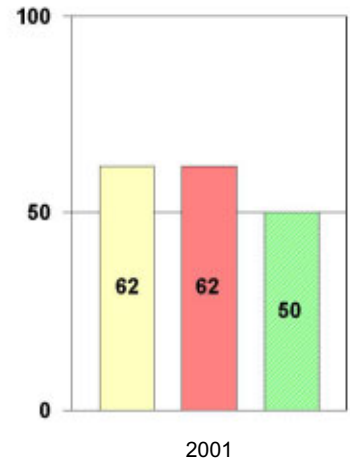
Science



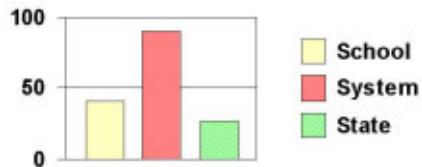
Social Science



Complete Battery



Legend



2000-2001 Georgia Public Education Report Card

Fulton County Jackson Elementary School

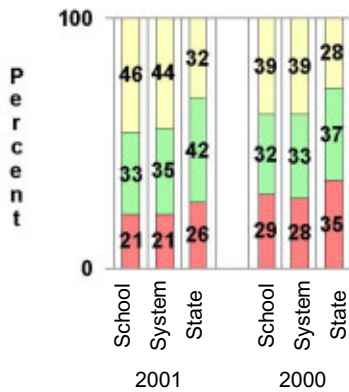
CRITERION-REFERENCED ASSESSMENTS

Criterion-Referenced Competency Tests (CRCTs)

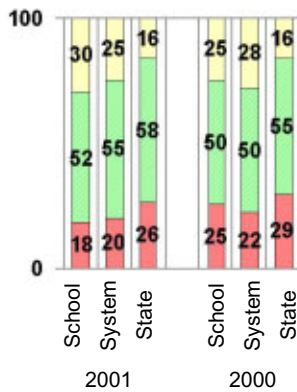
Percentage of Students Scoring in the Indicated Achievement Levels

Each chart reflects data for two years of testing.

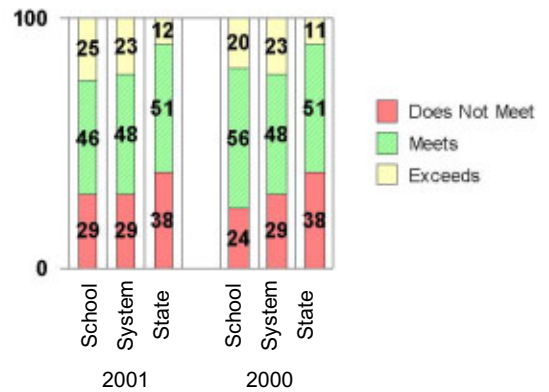
Grade 4 Reading



Grade 4 Language Arts



Grade 4 Mathematics



PERFORMANCE ASSESSMENTS

Grade 5 Writing Assessment

Percent at Developmental Stages:	2000-2001			1999-2000			1998-99		
	School	System	State	School	System	State	School	System	State
Stage 1: The Emerging Writer	1%	1%	1%	1%	1%	1%	1%	0%	1%
Stage 2: The Developing Writer	1%	2%	2%	3%	3%	2%	3%	2%	2%
Stage 3: The Focusing Writer	14%	14%	17%	8%	16%	19%	6%	14%	19%
Stage 4: The Experimenting Writer	30%	34%	42%	44%	38%	41%	31%	35%	41%
Stage 5: The Engaging Writer	37%	32%	29%	35%	29%	27%	36%	31%	27%
Stage 6: The Extending Writer	17%	17%	9%	9%	14%	9%	24%	18%	11%

2000-2001 Georgia Public Education Report Card

Fulton County

Jackson Elementary School

CERTIFIED PERSONNEL DATA

		Administrators	Support Personnel	PK-12 Teachers
Positions	Number	2.45	5.41	59.84
	Average Contract Days	230.99	195.71	190.25
Personnel	Full-time	2	3	57
	Part-time	9	8	10
Gender	Male	0	2	7
	Female	11	9	60
Certificate Level	4 Yr Bachelor's	6	3	48
	5 Yr Master's	3	6	18
	6 Yr Specialist's	1	2	1
	7 Yr Doctoral	1	0	0
	Other *	0	0	0
Years Experience	<1	0	1	2
	1-10	7	6	39
	11-20	1	2	16
	21-30	2	2	10
	>30	1	0	0
	Average	13.82	12.00	9.78

* Includes One- and Two-Year Vocational Certificates.

ACCREDITATION DATA

Accredited by Southern Association of Colleges and Schools (SACS):
Elementary/Middle Commission

AWARDS/RECOGNITION DATA

Schools in Georgia may receive recognition in the following programs:

- Charter School
- Pay for Performance Program
- Georgia School of Excellence
- National Blue Ribbon School

Jackson Elementary School did not receive recognition in any of these programs during the 2000-2001 school year.

For more information about these programs, contact your school principal or the school system central office.